



**Tutorial: Hybrid App Package  
Development**

---

# **Sybase Unwired Platform 2.2 SP04**

DOCUMENT ID: DC01946-01-0224-01

LAST REVISED: May 2013

Copyright © 2013 by Sybase, Inc. All rights reserved.

This publication pertains to Sybase software and to any subsequent release until otherwise indicated in new editions or technical notes. Information in this document is subject to change without notice. The software described herein is furnished under a license agreement, and it may be used or copied only in accordance with the terms of that agreement.

Upgrades are provided only at regularly scheduled software release dates. No part of this publication may be reproduced, transmitted, or translated in any form or by any means, electronic, mechanical, manual, optical, or otherwise, without the prior written permission of Sybase, Inc.

Sybase trademarks can be viewed at the Sybase trademarks page at <http://www.sybase.com/detail?id=1011207>. Sybase and the marks listed are trademarks of Sybase, Inc. ® indicates registration in the United States of America.

SAP and other SAP products and services mentioned herein as well as their respective logos are trademarks or registered trademarks of SAP AG in Germany and in several other countries all over the world.

Java and all Java-based marks are trademarks or registered trademarks of Oracle and/or its affiliates in the U.S. and other countries.

Unicode and the Unicode Logo are registered trademarks of Unicode, Inc.

All other company and product names mentioned may be trademarks of the respective companies with which they are associated.

Use, duplication, or disclosure by the government is subject to the restrictions set forth in subparagraph (c)(1)(ii) of DFARS 52.227-7013 for the DOD and as set forth in FAR 52.227-19(a)-(d) for civilian agencies.

Sybase, Inc., One Sybase Drive, Dublin, CA 94568.

# Contents

<b>Sybase Unwired Platform Tutorials .....</b>	<b>1</b>
<b>Getting Started with Unwired Platform .....</b>	<b>3</b>
Installing Sybase Unwired Platform .....	3
Starting Sybase Unwired Platform Services .....	4
Starting Sybase Unwired WorkSpace .....	4
Connecting to Sybase Control Center .....	5
Learning Sybase Unwired WorkSpace Basics .....	5
<b>Developing a Database Mobile Business Object .....</b>	<b>9</b>
Creating the HybridApp101 Mobile Application Project .....	9
Creating the TravelRequest Database Table .....	10
Creating the TravelRequest Mobile Business Object ....	12
Deploying the HybridApp101 Mobile Application Project .....	12
<b>Developing a Hybrid App Package .....</b>	<b>15</b>
Registering Application Connections in Sybase Control Center .....	16
Developing a Hybrid App Screenflow .....	17
Creating a New Screenflow .....	17
Customizing the Module Display Name and Client Icon .....	18
Adding the Travel Request Screen .....	19
Modifying Menu Text and Adding a Key .....	22
Making Screen Content Collapsible .....	25
Generating Code for a Hybrid App Package .....	28
Customizing Generated Code .....	32
Testing the Hybrid App on the iPhone Simulator .....	34
Building the iOS Hybrid Web Container Using the Provided Source Code .....	34
Configuring iPhone Connection Settings .....	35

Running the Hybrid App on the iPhone Simulator .....	36
Testing the Hybrid App on the Android Emulator .....	38
Configuring the Android Emulator .....	38
Configuring Connection Settings on the Android Emulator .....	41
Running the Hybrid App on the Android Emulator .....	45
Testing the Hybrid App on the BlackBerry Simulator ....	47
Downloading the BlackBerry JDE .....	48
Configuring the Hybrid App in the BlackBerry Simulator .....	48
Running the Hybrid App on the BlackBerry Simulator .....	51
Testing the Hybrid App on the Windows Mobile Emulator .....	52
Installing Microsoft Synchronization Software ....	53
Configuring the Windows Mobile Emulator .....	54
Configuring Connection Settings on Windows Mobile .....	57
Running the Hybrid App on the Windows Mobile Emulator .....	61
Verifying the Data on the Back-end Database .....	65
<b>Learn More About Sybase Unwired Platform .....</b>	<b>67</b>
<b>Index .....</b>	<b>69</b>

# Sybase Unwired Platform Tutorials

The Sybase® tutorials demonstrate how to develop, deploy, and test mobile business objects, device applications, online mobile applications (native OData and REST services based), and Hybrid App packages. You can also use the tutorials to demonstrate system functionality and train users.

- Learn mobile business object (MBO) basics, and use this tutorial as a foundation for the Object API application development tutorials:

- *Tutorial: Mobile Business Object Development*

---

**Note:** For all Object API tutorials, if you opt to use the Mobile Business Object example project instead of performing the Mobile Business Object Tutorial, you must deploy the mobile application project to Unwired Server as a prerequisite.

---

- Create native Object API mobile device applications:
  - *Tutorial: Android Object API Application Development*
  - *Tutorial: BlackBerry Object API Application Development*
  - *Tutorial: iOS Object API Application Development*
  - *Tutorial: Windows Object API Application Development*
  - *Tutorial: Windows Mobile Object API Application Development*
- Create a mobile business object, then develop a hybrid app package that uses it:
  - *Tutorial: Hybrid App Package Development*
- Create an OData mobile application with REST Services
  - *Tutorial: Android OData Application Development with REST Services*
  - *Tutorial: iOS OData Application Development with REST Services*



# Getting Started with Unwired Platform

Install and learn about Sybase Unwired Platform and its associated components.

Complete the following tasks for all tutorials, but you need to perform them only once.

1. *Installing Sybase Unwired Platform*

Install Sybase Mobile SDK and Unwired Platform Runtime.

2. *Starting Sybase Unwired Platform Services*

Start Unwired Server, Sybase Control Center, the sample database, the cache database (CDB), and other essential services.

3. *Starting Sybase Unwired WorkSpace*

Start the development environment, where you can create mobile business objects (MBOs), manage enterprise information system (EIS) datasources and Unwired Server connections, develop Hybrid App applications (Hybrid Apps), and generate Object API code.

4. *Connecting to Sybase Control Center*

Open Sybase Control Center to manage Unwired Server and its components.

5. *Learning Sybase Unwired WorkSpace Basics*

Sybase Unwired WorkSpace features are well integrated in the Eclipse IDE. If you are unfamiliar with Eclipse, you can quickly learn the basic layout of Sybase Unwired WorkSpace and the location of online help.

## Installing Sybase Unwired Platform

---

Install Sybase Mobile SDK and Unwired Platform Runtime.

Before starting this tutorial, install all the requisite Unwired Platform components. See the Sybase Unwired Platform documentation at <http://sybooks.sybase.com>:

- *Release Bulletin*
- *Installation Guide for Sybase Mobile SDK*
- *Installation Guide for Runtime*

1. Install these Unwired Platform Runtime components:

- Data Tier (included with single-server installation)
- Unwired Server

2. Install Mobile SDK, which includes:

- Development support for native Object API applications, HTML5/JS Hybrid Apps, and native OData SDK applications.
- Sybase Unwired WorkSpace, the Eclipse-based development environment for MBOs and Hybrid Apps.

## Starting Sybase Unwired Platform Services

---

Start Unwired Server, Sybase Control Center, the sample database, the cache database (CDB), and other essential services.

The way in which you start Unwired Platform Services depends on the options you selected during installation. You may need to manually start Unwired Platform Services.

Select **Start > (All) Programs > Sybase > Unwired Platform > Start Unwired Platform Services**.

The following services will be started:

- Sybase Control Center <Version>
- Sybase Unwired Cache DB
- Sybase Unwired SampleDB
- Sybase Unwired Server

Unwired Platform Services enable you to access the Unwired Platform runtime components and resources.

---

**Note:** The Unwired Platform installer creates the Windows service (Unwired Platform Sample DB) that runs the `sampledb` server only when you install Unwired Server with a Personal or Enterprise Development license. If you installed Unwired Server with an Enterprise Server (production) license, you must create this service using the `sampledb.bat` command line utility. See *Create or Remove the Windows Service for sampledb Server (sampledb) Utility* in *System Administration* for more information about using this command line utility.

---

## Starting Sybase Unwired WorkSpace

---

Start the development environment, where you can create mobile business objects (MBOs), manage enterprise information system (EIS) datasources and Unwired Server connections, develop Hybrid App applications (Hybrid Apps), and generate Object API code.

Select **Start > Programs > Sybase > Unwired Platform > Sybase Unwired WorkSpace**.

The Sybase Unwired WorkSpace opens in the Mobile Development perspective. The Welcome page displays links to the product and information.

### Next

To read more about Sybase Unwired WorkSpace concepts and tasks, select **Help > Help Contents**.



## Connecting to Sybase Control Center

---

Open Sybase Control Center to manage Unwired Server and its components.

From Sybase Control Center, you can:

- View servers and their status
- Start and stop a server
- View server logs
- Deploy a mobile application package
- Register application connections
- Set role mappings
- Assign/Unassign a hybrid application to a device

For information on configuring, managing, and monitoring Unwired Server, click **Help > Online Documentation**.

1. Select **Start > Programs > Sybase > Sybase Control Center**.

---

**Note:** If Sybase Control Center does not launch, make sure that the Sybase Control Center service is started in the Windows Services dialog.

---

2. Log in by entering the credentials set during installation.

Sybase Control Center gives you access to the Unwired Platform administration features that you are authorized to use.

## Learning Sybase Unwired WorkSpace Basics

---

Sybase Unwired WorkSpace features are well integrated in the Eclipse IDE. If you are unfamiliar with Eclipse, you can quickly learn the basic layout of Sybase Unwired WorkSpace and the location of online help.

- To access the online help, select **Help > Help Contents**. Some documents are for Sybase Unwired Platform, while others are for the Eclipse development environment.
- The Welcome page provides links to useful information to get you started.
  - To close the Welcome page, click **X**.
  - Reopen the Welcome page by selecting **Help > Welcome**.
  - To learn about tasks you must perform, select the **Development Process** icon.
- In Sybase Unwired WorkSpace, look at the area (window or view) that you will use to access, create, define, and update mobile business objects (MBOs).

Window	Description
WorkSpace Navigator view	<p>Use this view to create Mobile Application projects, and review and modify MBO-related properties.</p> <p>This view displays mobile application project folders, each of which contains all project-related resources in subfolders, including MBOs, datasource references to which the MBOs are bound, personalization keys, and so on.</p>
Enterprise Explorer view	<p>A view that provides functionality to connect to various enterprise information systems (EIS), such as database servers, SAP® back ends, and Unwired Server.</p>
Mobile Application Diagram	<p>The Mobile Application Diagram is a graphical editor where you create and define mobile business objects.</p> <p>Use the Mobile Application Diagram to create MBOs (including attributes and operations), then define relationships with other MBOs. You can:</p> <ul style="list-style-type: none"> <li>• Create MBOs in the Mobile Application Diagram using Palette icons and menu selections – either bind or defer binding to a datasource, when creating an MBO. For example, you may want to model your MBOs before creating the datasources to which they bind. This MBO development method is sometimes referred to as the top-down approach.</li> <li>• Drag and drop items from Enterprise Explorer to the Mobile Application Diagram to create the MBO – quickly creates the operations and attributes automatically based on the datasource artifact being dropped on the Mobile Application Diagram.</li> </ul> <p>Each new mobile application project generates an associated mobile application diagram.</p>

Window	Description
Palette	The Palette is accessed from the Mobile Application Diagram and provides controls, such as the ability to create MBOs, add attributes and operations, and define relationships, by dragging and dropping the corresponding icon onto the Mobile Application Diagram or existing MBO.
Properties view	Select an object in the Mobile Application Diagram to display and edit its properties in the Properties view. While you cannot create an MBO from the Properties view, most development and configuration is performed here.
Outline view	Displays an outline of the active file and lists structural elements. The contents are editor-specific.
Problems view	Displays validation errors or warnings that you may encounter in addition to errors in the Diagram editor and Properties view. Follow warning and error messages to adjust MBO properties and configurations to avoid problems, and use as a valuable source for collecting troubleshooting information when reporting issues to Customer Service and Support.
Error Log view	Displays error log information. This is a valuable source for collecting troubleshooting information.



# Developing a Database Mobile Business Object

Create a database mobile business object and deploy it to Unwired Server.

## Prerequisites

1. Complete the tasks in *Getting Started with Sybase Unwired Platform*.
2. (Optional) To use as a reference and to copy source code from when completing this tutorial, download the *Hybrid App Package* example project (source code only) from the SAP® Community Network: <http://scn.sap.com/docs/DOC-8803>.

## Task

Develop the database mobile business object by:

1. *Creating the HybridApp101 Mobile Application Project*  
A mobile application project is the Sybase Unwired WorkSpace container for the mobile business objects that form the business logic of mobile applications.
2. *Creating the TravelRequest Database Table*  
Create the database table to be used by the TravelRequest mobile business object.
3. *Creating the TravelRequest Mobile Business Object*  
Use the TravelRequest database table to create a mobile business object.
4. *Deploying the HybridApp101 Mobile Application Project*  
Deploy the project that contains the TravelRequest mobile business object to the server.

## Creating the HybridApp101 Mobile Application Project

---

A mobile application project is the Sybase Unwired WorkSpace container for the mobile business objects that form the business logic of mobile applications.

Create a mobile application project before creating its mobile business objects.

1. In Sybase Unwired WorkSpace, click **File > New > Mobile Application Project**.
2. Enter HybridApp101 as the project name.
3. Click **Finish**.

## Creating the TravelRequest Database Table

---

Create the database table to be used by the TravelRequest mobile business object.

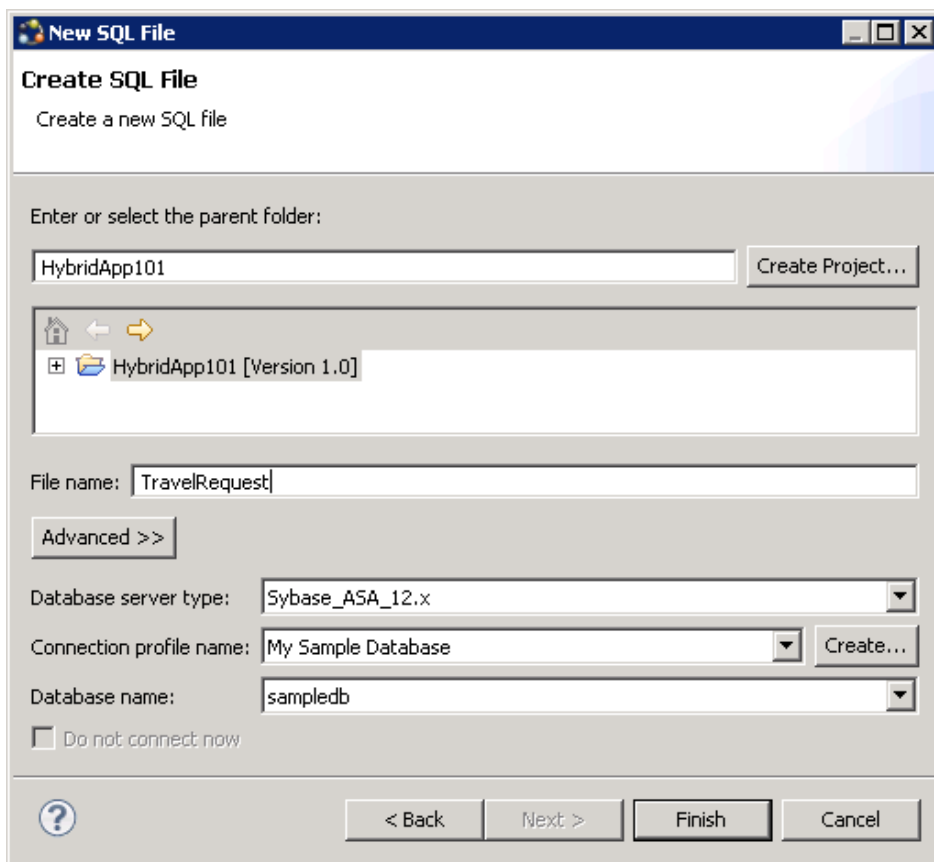
Create the database table from a SQL file:

1. In Enterprise Explorer, open the Database Connections folder, right-click My Sample Database, and choose **Connect**. If **Connect** is not available in the context menu, the database is already connected.

See *Connecting to the Sample Database* in *Tutorial: Mobile Business Object Development* for more information.

2. From the main menu, select **File > New > Other**.
3. Select **SQL Development > SQL File**, and click **Next**.
4. Enter or select the values shown, then click **Finish**:

Field	Value
Parent folder	Select the <b>HybridApp101</b> project.
File name	Enter <b>TravelRequest</b> .
Database server type	Select <b>Sybase_ASA_12.x</b> .
Connection profile name	Select <b>My Sample Database</b> .
Database name	Select <b>sampledb</b> .



5. If the new file does not open in the SQL File Editor, open it by double-clicking HybridApp101\TravelRequest.sql in Workspace Navigator. In TravelRequest.sql, copy and paste this code:

```
CREATE TABLE TravelRequest (
    trvl_Id                integer NOT NULL DEFAULT
autoincrement,
    trvl_Date              date NULL,
    trvl_Loc               varchar(20) NULL,
    est_Cost               float NULL,
    purpose                varchar(200) NULL,
    trvl_Status            varchar(20) NULL,
    st_Cmmnt               varchar(200) NULL,
    PRIMARY KEY CLUSTERED (trvl_Id)
);
```

6. Save TravelRequest.sql and close the editor.
7. In the WorkSpace Navigator, expand **HybridApp101**. Right-click **TravelRequest.sql** and choose **Execute SQL Files**.

Sybase Unwired WorkSpace creates a table called TravelRequest in the sampledb database.

8. In Enterprise Explorer, expand **sampledb**, expand the **Tables** folder, and verify that the new TravelRequest table is added.

If the table is not visible, right-click the **Tables** folder and choose **Refresh**.

## Creating the TravelRequest Mobile Business Object

---

Use the TravelRequest database table to create a mobile business object.

1. In Enterprise Explorer, open the Database Connections\My Sample Database\sampledb\Tables folder.
2. Drag the TravelRequest table from the Enterprise Explorer onto the HybridApp101 Mobile Application Diagram.
3. In the Quick Create wizard, accept the default settings and click **OK**.  
An MBO is created in the Mobile Application Diagram.
4. Save the diagram.

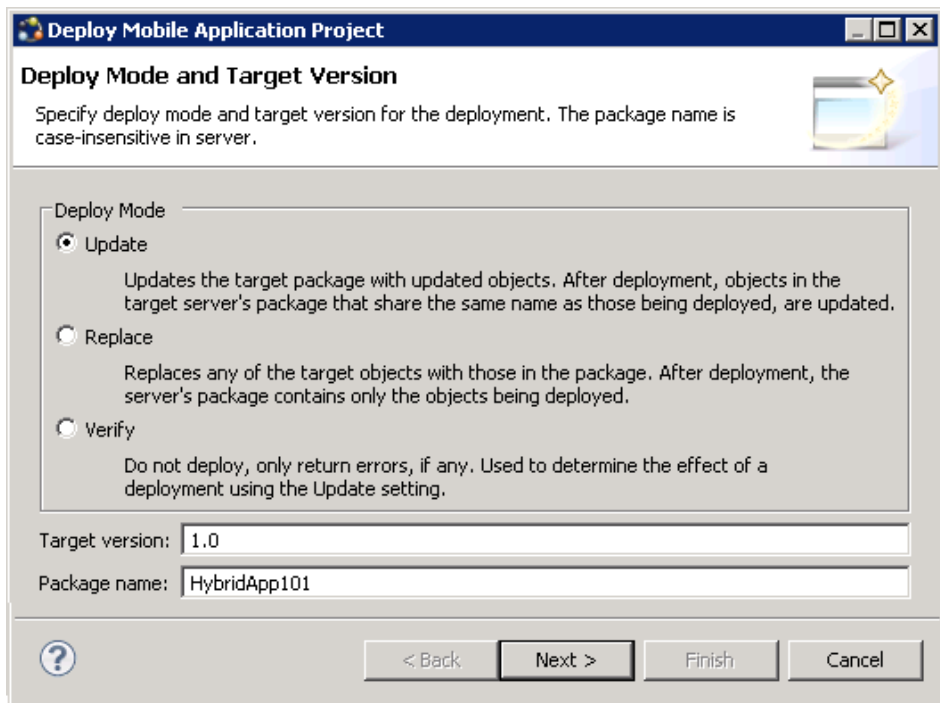
## Deploying the HybridApp101 Mobile Application Project

---

Deploy the project that contains the TravelRequest mobile business object to the server.

1. Right-click in the HybridApp101 Mobile Application Diagram and choose **Deploy Project**.
2. In the first page of the Deploy Mobile Application Project wizard, accept the default options and click **Next**.





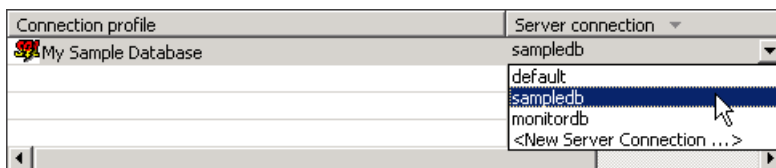
3. In the Contents page, select the **TravelRequest** mobile business object, and click **Next**.
4. In the Package User-defined Classes page, click **Next**.

---

**Note:** The Package User-Defined Classes window appears by default in the advanced developer profile.

---

5. In the Target Server page, select **My Mobile Server** in the list of available servers. If the **Next** button is not enabled, click **Connect** to connect to the server. Then click **Next**.
6. In the Assign package to applications page, click **Next**.
7. In the Server Connection Mapping page, click **My Sample Database** under **Connection profile**. In the same row, choose **sampledb** under **Server connection**.



8. Click **Finish**, and click **OK** to dismiss the Deployment Status window.
9. In Enterprise Explorer, open **Mobile Servers\My Mobile Server\Domains\default\Packages\hybridapp101:1.0\Mobile Business Objects**, and verify that the folder contains the deployed **TravelRequest** MBO.



# Developing a Hybrid App Package

Define the logic and screens for your Hybrid App, generate a package to run on specific device platforms, and deploy it to the server.

This tutorial has been developed using Sybase Unwired Platform 2.2 SP02 and this device-specific software:

- Mac OS X 10.7.4, iOS SDK 6.0, Xcode 4.5.1, and the iOS 6.0 simulator
- Android 4.0.3 SDK and simulator
- BlackBerry 6.0 JDE and MDS-CS simulator
- Windows XP ActiveSync 4.5, Windows Device Emulator (Standalone Release), and Windows Mobile 6.5.3 Professional Emulator

If you use a different version of Sybase Unwired Platform, some steps may vary.

## 1. *Registering Application Connections in Sybase Control Center*

Make the application available on specific devices.

## 2. *Developing a Hybrid App Screenflow*

Use the Hybrid App Designer to create the screenflows for the TravelRequest mobile business object.

## 3. *Generating Code for a Hybrid App Package*

Create a Hybrid App package, customize it, and deploy it to Unwired Server to make it available to device clients.

## 4. *Testing the Hybrid App on the iPhone Simulator*

Build a sample Hybrid Web Container in the Xcode IDE, and run the Travel Request application on an iPhone simulator.

## 5. *Testing the Hybrid App on the Android Emulator*

Install and configure the Android simulator software and use it to run the Travel Request application.

## 6. *Testing the Hybrid App on the BlackBerry Simulator*

Install and configure the BlackBerry simulator, and use it to run the Travel Request application.

## 7. *Testing the Hybrid App on the Windows Mobile Emulator*

Install and configure the Windows Mobile synchronization software and emulator, and use it to run the Travel Request application.

## 8. *Verifying the Data on the Back-end Database*

After submitting a travel request in an emulator, verify that the information is updated in the database.

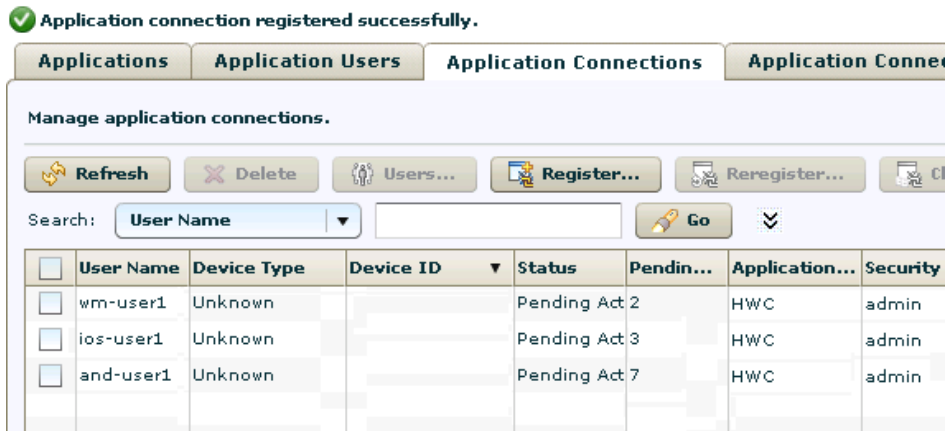
## Registering Application Connections in Sybase Control Center

---

Make the application available on specific devices.

1. Log in to Sybase Control Center using the supAdmin user name and the current password.
2. In Sybase Control Center, select **View > Select > Sybase Unwired Platform Management View**.
3. Click **Applications** in the left pane. In the right pane, click **Application Connections**.
4. Register an application connection for each device that you will test in the tutorial:
  - a) Click **Register**.
  - b) In the Register Application Connection window, specify:
    - User – enter the name of the user who will activate and register the Hybrid App. For this tutorial, where several different emulators are tested, enter a unique user name for each device.
    - Template – select the **HWC** template.
    - Application ID – accept the default value.
    - Security configuration – accept the default value.
    - Logical role – accept the default blank field.
    - Domain – accept the default blank field.
    - Activation code length – accept the default value.
    - Activation expiration (hours) – accept the default value.
    - Specify activation code – select this option and enter a value, such as 123. If you do not specify an activation code, one is generated automatically. The user must enter the activation code when logging in to the application. The value can contain letters A – Z (uppercase or lowercase), numbers 0 – 9, or a combination of both.
  - c) Click **OK**.

Sybase Control Center adds the connection to the Application Connections table. The following example shows three registered connections, each for a different device. The connections do not show a Device Type or Device ID yet because the devices are not currently connected: these fields are automatically loaded when the specified user accesses the connection.



## Developing a Hybrid App Screenflow

Use the Hybrid App Designer to create the screenflows for the TravelRequest mobile business object.

### Prerequisites

Complete *Deploying the HybridApp101 Mobile Application Project* on page 12.

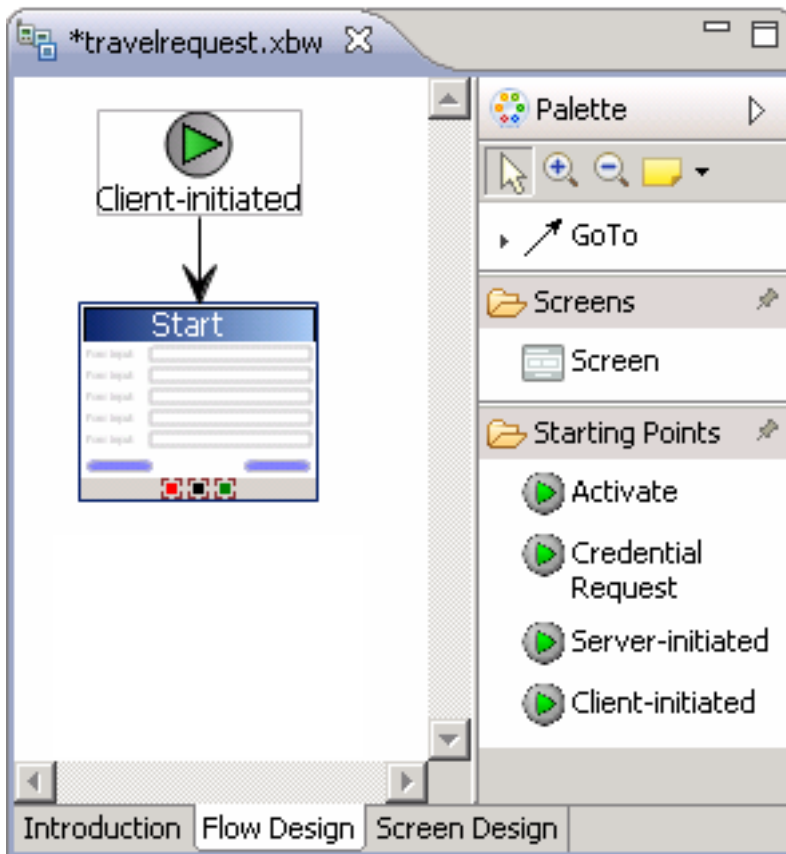
### See also

- *Generating Code for a Hybrid App Package* on page 28

## Creating a New Screenflow

Use the Hybrid App Designer wizard to create the initial screen.

1. In the Hybrid App Designer, click **File > New > Hybrid App Designer**.
2. Select the HybridApp101 folder and enter `travelrequest.xbw` as the Hybrid App name.
3. Click **Next**.
4. In the Starting Points page, select **Can be started, on demand, from the client**, and click **Finish**.
5. In the Hybrid App Designer, click the **Flow Design** tab.  
In the screenflow, a Client-initiated screen is connected to a Start screen.



### See also

- *Customizing the Module Display Name and Client Icon* on page 18
- *Adding the Travel Request Screen* on page 19
- *Modifying Menu Text and Adding a Key* on page 22
- *Making Screen Content Collapsible* on page 25

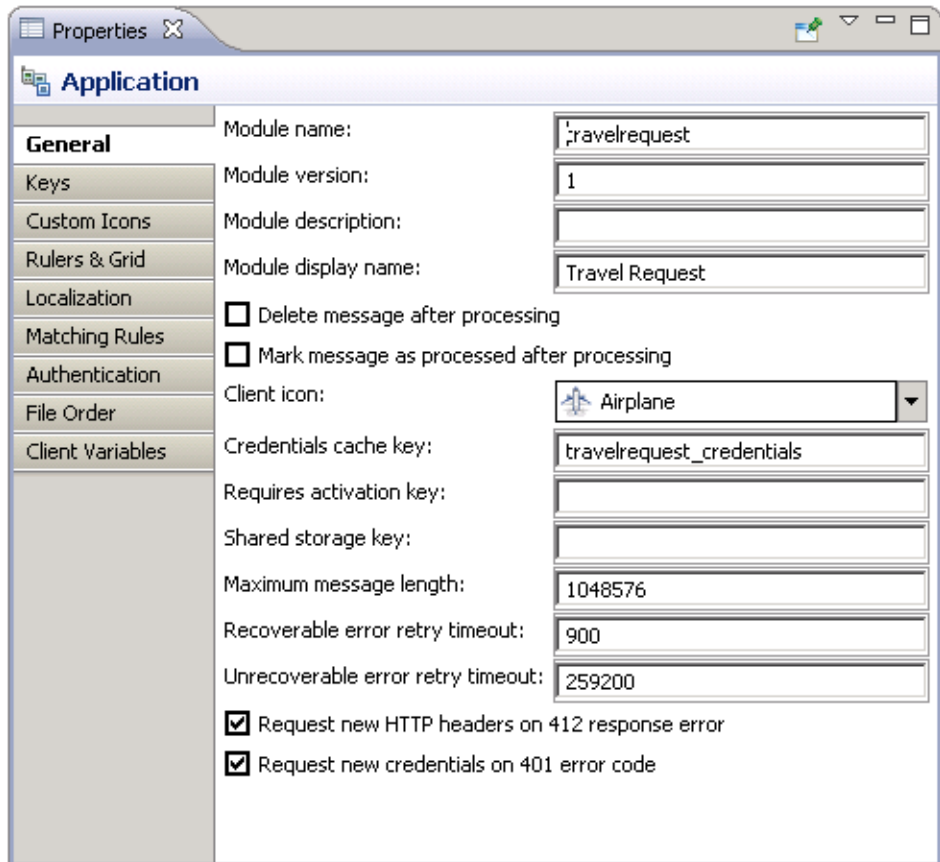
## **Customizing the Module Display Name and Client Icon**

Change the generated Hybrid App name and icon.

You can change the default appearance of the generated Hybrid App. For this tutorial, change the Hybrid App name to make it more readable on the mobile device, and choose a different client icon.

1. In the **travelrequest.xbw** Flow Design, click a blank part of the application.

2. In the General page of the Application Properties view, change the value of **Module display name** (not **Module name**) to `Travel Request`.
3. In Client icon, change the default image from `New Hybrid App` to `Airplane`.



### See also

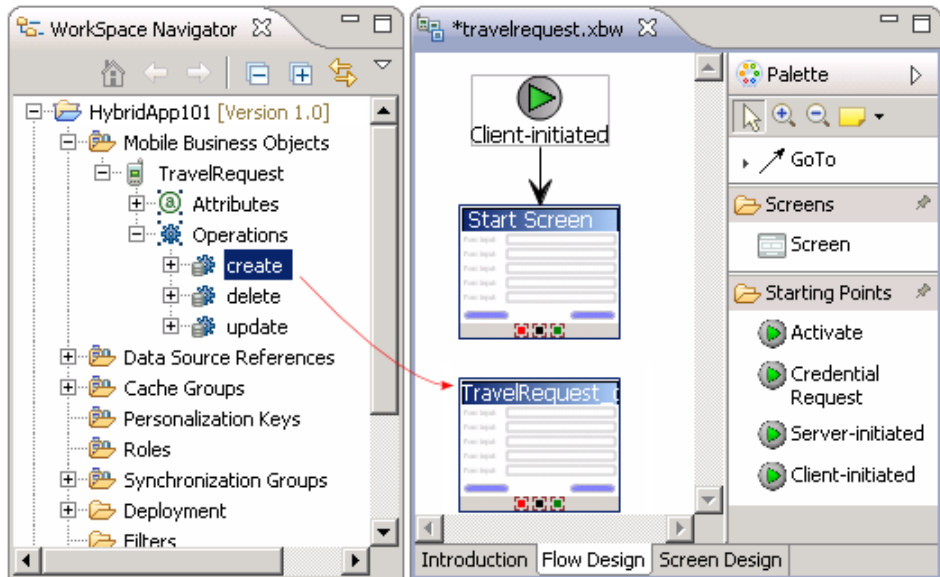
- *Creating a New Screenflow* on page 17
- *Adding the Travel Request Screen* on page 19
- *Modifying Menu Text and Adding a Key* on page 22
- *Making Screen Content Collapsible* on page 25

## Adding the Travel Request Screen

Add a screen for Travel Request input.

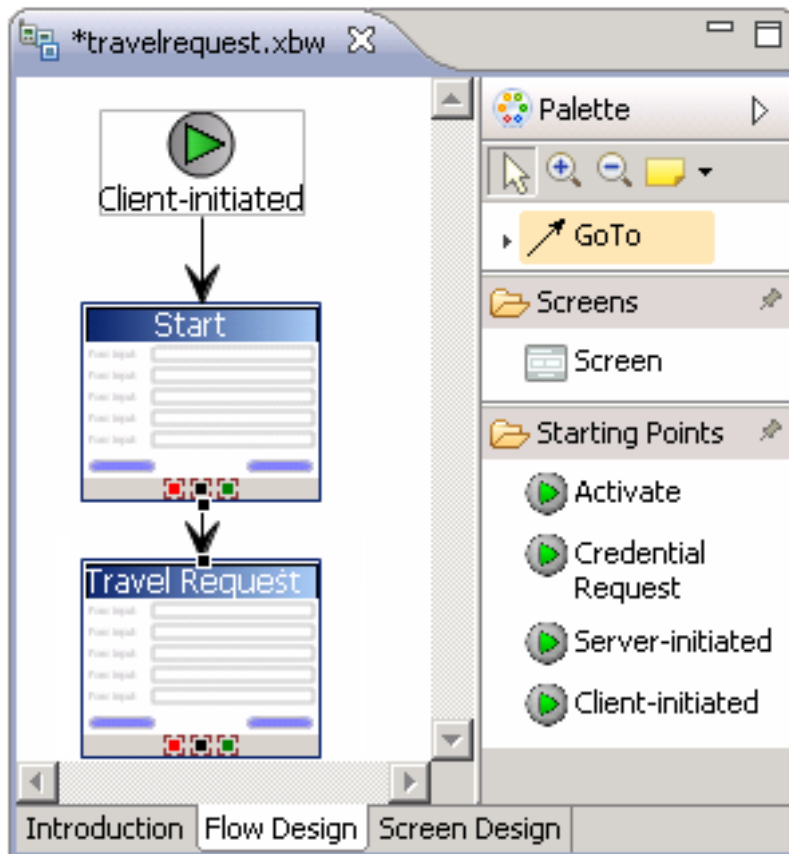
1. In Workspace Navigator, open `HybridApp101\Mobile Business Objects\TravelRequest\Operations`.

2. To add the TravelRequest\_create screen, drag a **create** operation from the Navigator onto the Flow Design.



3. Change the TravelRequest screen title to make it more readable.
  - a) In the Flow Design, click the TravelRequest screen to display its properties.
  - b) In the Properties view General page, change the Name property from TravelRequest\_create to Travel Request.  
The key name automatically changes to Travel\_Request.
4. Add a GoTo connection from the Start Screen to the Travel Request screen:
  - a) In the Palette, click **GoTo**.
  - b) Click the **Start** Screen, and while holding the mouse down, drag the connection to the **Travel Request** screen.A line with an arrow connects the two screens.





5. Double-click the **Travel Request** screen to open its screen design.
6. In the Screen Design page, modify the label of the Trvl Status edit box to make it more readable:
  - a) In the Travel Request screen, select **Trvl Status**.
  - b) In the Properties view, change the Label to **Status:**.
  - c) In the Travel Request screen, select the **St Cmmnt** edit box.
  - d) In the Properties view, change the Label to **Comment:**.
7. Press **Ctrl+S** to save your screen design.

### See also

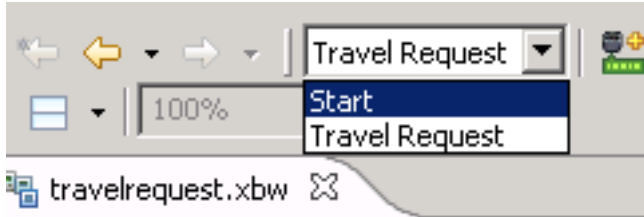
- *Creating a New Screenflow* on page 17
- *Customizing the Module Display Name and Client Icon* on page 18
- *Modifying Menu Text and Adding a Key* on page 22
- *Making Screen Content Collapsible* on page 25

## **Modifying Menu Text and Adding a Key**

Change a menu item label and add introductory text for the start screen using a key.

1. Open the Start screen design.

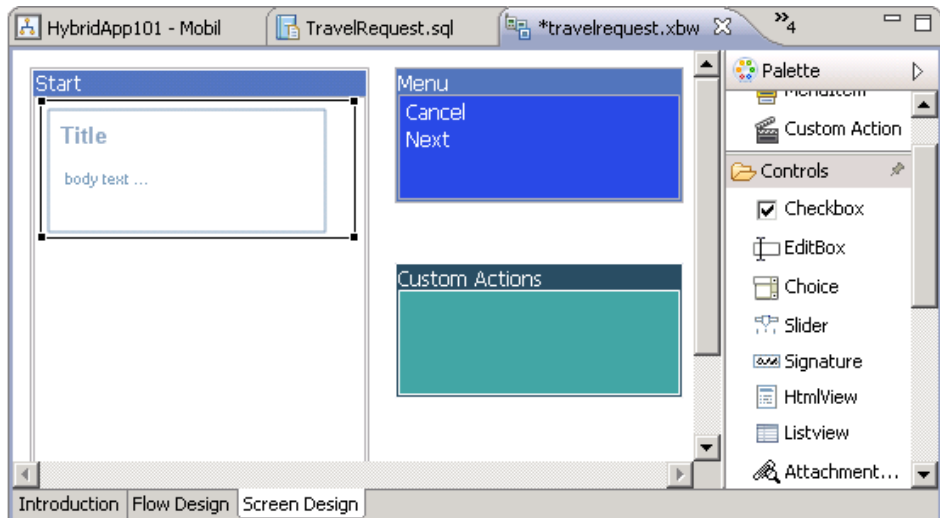
For example, in the tool bar, choose **Start** in the screen selection control:



2. In the Screen Design, shorten the menu text to fit better on the mobile device screen.
  - a) In the menu, click **Open Travel Request**.
  - b) In the Menu Item Properties view, change **Name** from Open Travel Request to Next.
3. Add an HtmlView control for the Start screen.

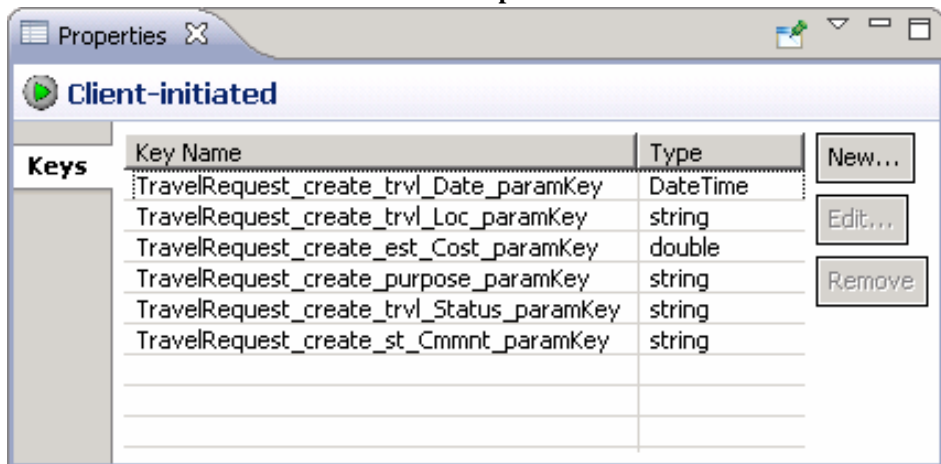
The HtmlView control defines basic HTML markup for the screen. It is a container to which you can add other controls from the Palette, as well as your own custom HTML code.

- a) In the Palette, select the **HtmlView** control.
- b) Click in the Start screen to add the control:



4. Click the **Flow Design** tab.
5. Select the **Client-initiated** starting point.

The Properties view shows all the keys in the `create` method of the `TravelRequest` mobile business object, which were automatically created when you dragged and dropped the create operation on the screen. If the Properties view does not open, right-click the **Client-initiated** screen and choose **Show Properties View**.



6. Create a new key:
  - a) In the Client-initiated Properties view, click **New**.
  - b) Enter these values:
    - Name – IntroKey
    - Type – string

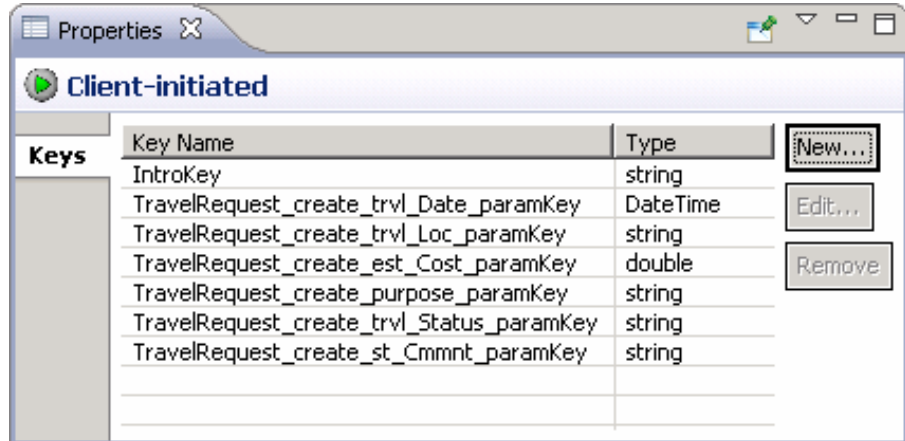
---

**Note:** Only string keys can be associated with an HtmlView control.

---

- c) Click **OK**.

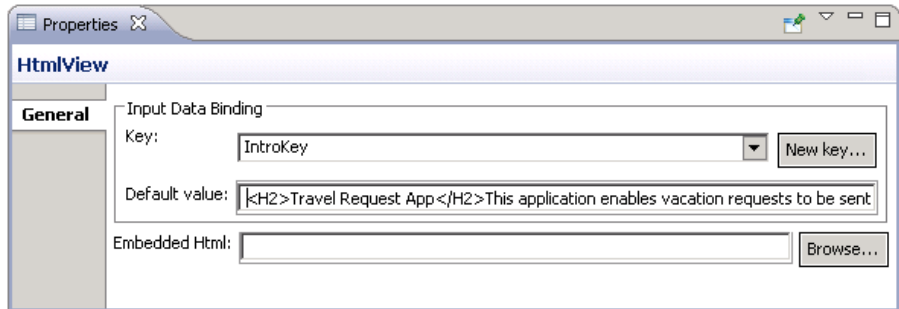
The new key, IntroKey, is added to the list of keys in the Properties view.



7. Define the default value for the new key:

- In the Flow Design, double-click the Start screen to open its screen design.
- In the Start Screen, select the **HtmlView** control to display its properties.
- In HTMLView Properties, under Input Data Binding, choose **IntroKey**.
- In Default value, enter this message code:

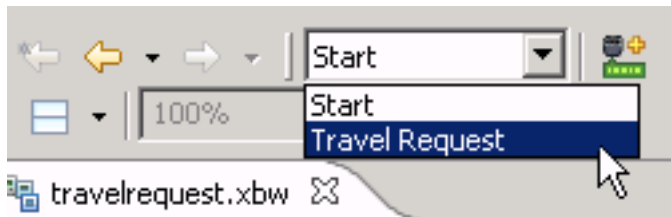
```
<H2>Travel Request App</H2>This application enables vacation requests to be sent for approval.<br>
```



### 8. View the current parameter settings of the Travel Request screen:

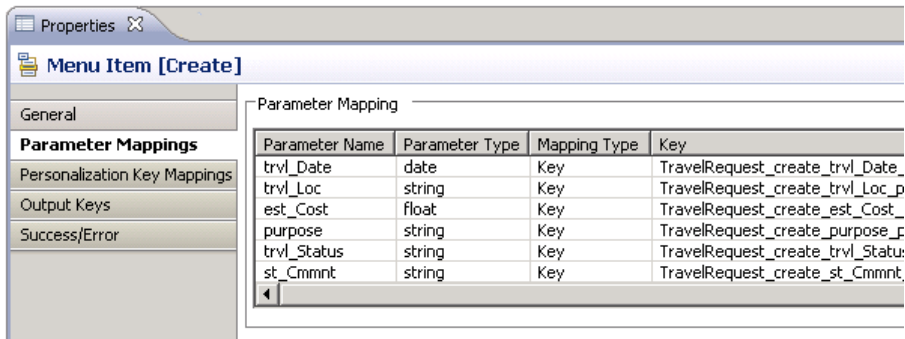
- Switch to the Travel Request screen design.

For example, choose **Travel Request** in the screen selection control:



- In the menu, select the **Create** operation to display its properties.
- In Properties, click **Parameter Mappings**.

The parameter mapping table shows the mobile business object parameters for the operation and their keys.



**See also**

- *Creating a New Screenflow* on page 17
- *Customizing the Module Display Name and Client Icon* on page 18
- *Adding the Travel Request Screen* on page 19
- *Making Screen Content Collapsible* on page 25

## **Making Screen Content Collapsible**

Enable users to expand and collapse screen elements.

By default, content in a Collapsible control is initially hidden. The application user can expand the control and show the content by clicking the plus sign icon beside it. To hide the content again, the user clicks the same icon (now changed to a minus sign). Collapsible controls can be useful for simplifying the initial screen, while giving the user control over what content to show.

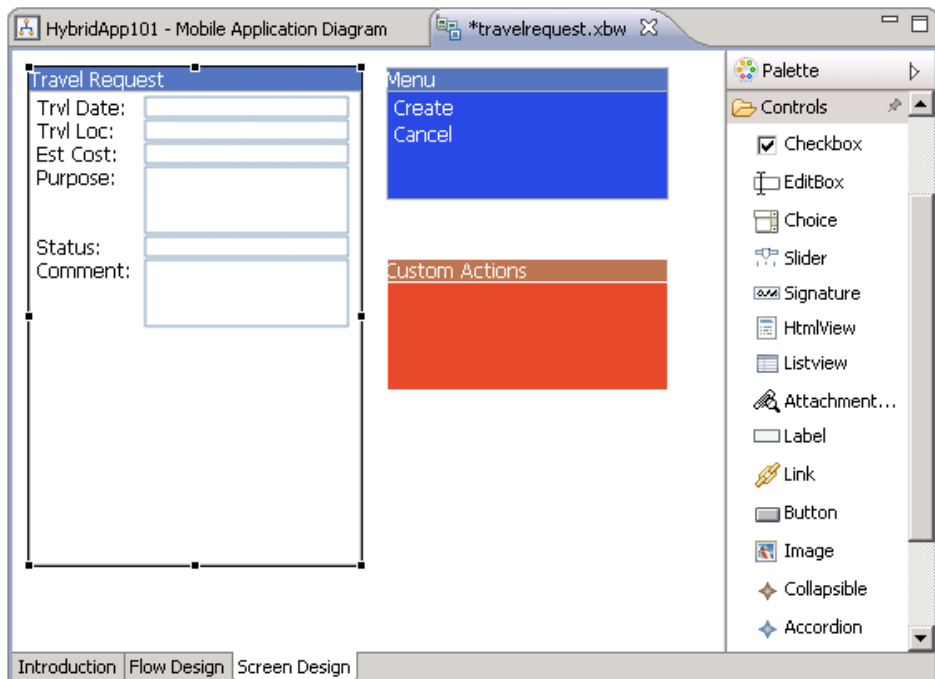
An Accordion control enables you to associate two or more Collapsible controls. By default, only one Collapsible control in the group is expanded at a time: if the user expands one Collapsible control, all the others in the Accordion control are collapsed.

---

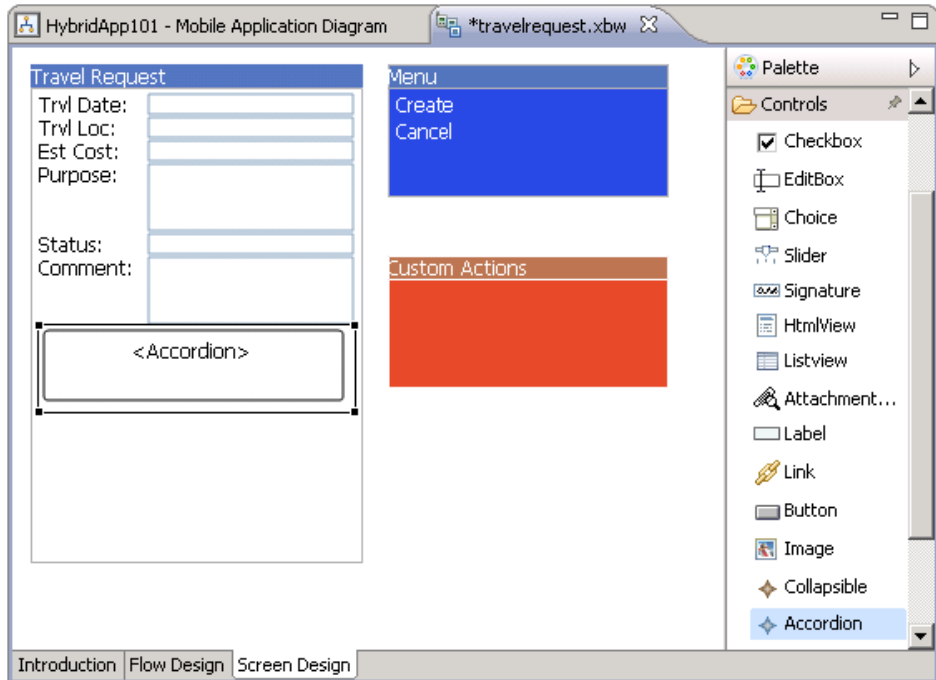
**Note:** Accordion and Collapsible controls are not supported in Windows Mobile devices: their content is static, not collapsible.

---

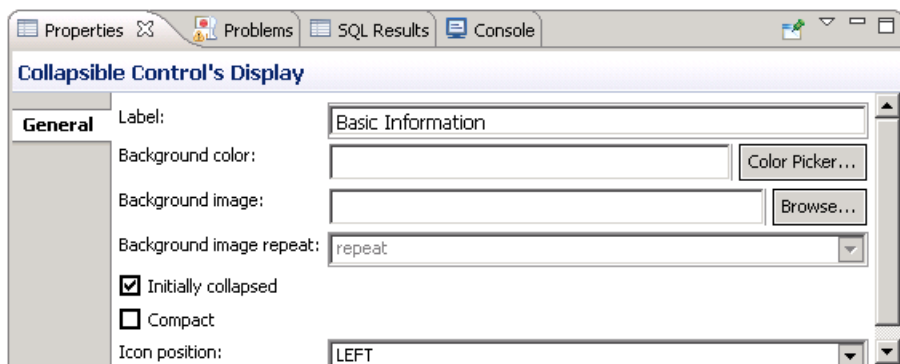
1. In the Designer, open the Travel Request screen.



2. In the Screen Design Palette, click **Accordion**. Then click in a blank area of the Travel Request screen to add the control.

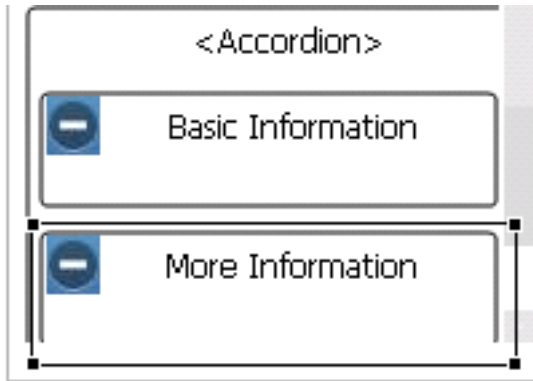


3. Add a Collapsible control to the Accordion:
  - a) In the Screen Design Palette, click **Collapsible**.
  - b) Click in the Accordion control.
  - c) In Collapsible properties, enter Basic Information as the Label.



4. Repeat the previous step to add a second Collapsible control below the first one, specifying the label More Information.

Because both Collapsible controls are in the same Accordion control, the application user can expand either one, but not both at the same time.



5. Move the **Trvl Date**, **Trvl Loc**, and **Est Cost** controls from the main part of the screen to the **Basic Information** control.  
For example, select the three controls and press **Ctrl+X** to cut them, then select the **Basic Information** control and press **Ctrl+V** to paste them.
6. Repeat the previous step to move the **Purpose**, **Status**, and **Comment** controls to the **More Information** Collapsible.

Travel Request

<Accordion>

Basic Information

Trvl Date:

Trvl Loc:

Est Cost:

More Information

Purpose:

Status:

Comment:

7. Press **Ctrl+S** to save the screen design.

**See also**

- *Creating a New Screenflow* on page 17
- *Customizing the Module Display Name and Client Icon* on page 18
- *Adding the Travel Request Screen* on page 19
- *Modifying Menu Text and Adding a Key* on page 22


## Generating Code for a Hybrid App Package

---

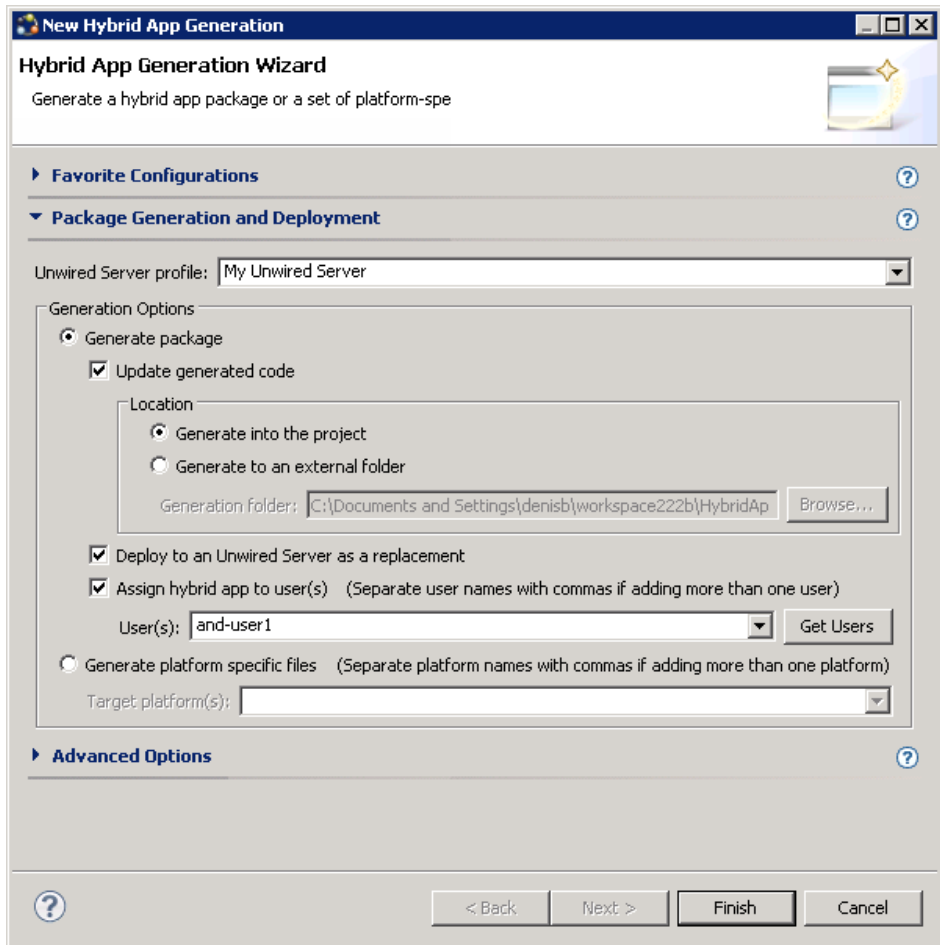
Create a Hybrid App package, customize it, and deploy it to Unwired Server to make it available to device clients.

Use the Hybrid App Package Generation wizard to generate files for the Hybrid App package, deploy the generated package files to the server, and assign the package to one or more devices. Then perform a simple customization by adding a header image to the generated package.



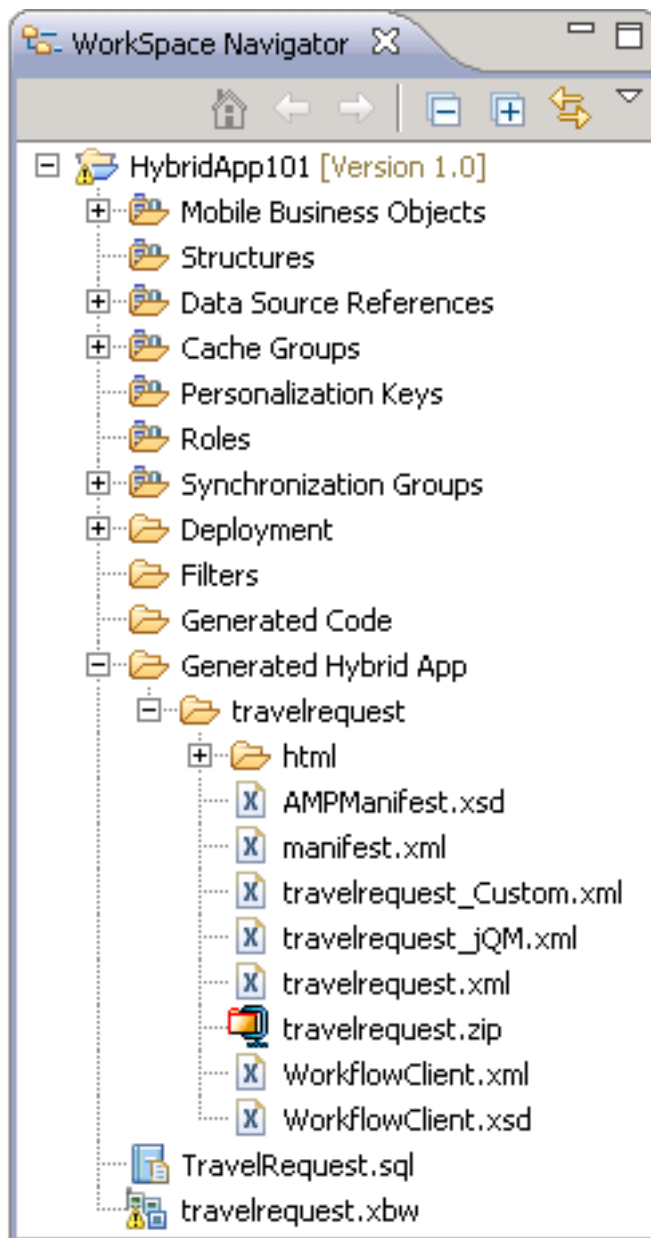
1. In Sybase Unwired WorkSpace, if the Hybrid App Designer is not open, expand HybridApp101 in the WorkSpace Navigator and double-click **travelrequest.xbw**.
2. In the Sybase Unwired WorkSpace toolbar, click the  Generate Hybrid App button.
3. Specify these options:

Option	Description
Unwired Server profile	Accept the default profile, <i>My Mobile Server</i> , to associate with the package.
Generate package	Accept the default selection of this option, <b>Update generated code</b> , and <b>Generate into the project</b> .
Deploy to an Unwired Server as a new package	Accept the default selection of this option.
Assign workflow to users	Select this option and click <b>Get Users</b> to assign each of the users for whom you registered connections (see <i>Registering Application Connections in Sybase Control Center</i> ). Use commas to separate users.

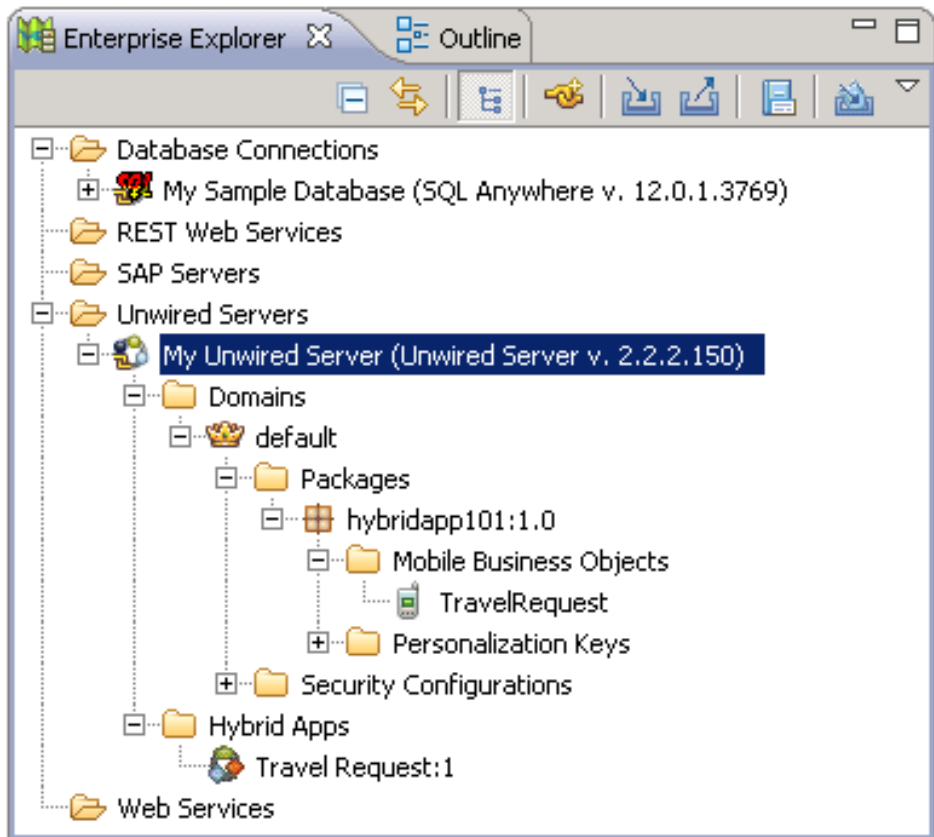


4. Click **Finish**.

The Workspace assigns the TravelRequest application to the users and generates the files for the Hybrid App package in a zip archive on the server. The files are visible in your project in the Workspace Navigator.



The Hybrid App package is added to Enterprise Explorer under the Unwired Servers \My Unwired Server\Workflows folder.



If these changes do not appear, press **F5** to refresh the display.

### See also

- *Developing a Hybrid App Screenflow* on page 17
- *Testing the Hybrid App on the iPhone Simulator* on page 34

## Customizing Generated Code

Modify `Custom.js` to change a generated Hybrid App.

Until now, this tutorial has shown how to customize your Hybrid App in the Designer, by modifying the properties of screens, menus, and controls. Your generated code reflects those changes. This topic demonstrates how to customize the generated code directly, by editing a special file, `Custom.js`.

`Custom.js` is generated the first time you generate the Hybrid App package. It contains commonly used functions from the Sybase Unwired Platform API and instructions for modifying them. Any modifications you make in `Custom.js` override the default behavior

of those functions. However, unlike other generated files, `Custom.js` is not overwritten the next time you regenerate your package. In this way, your custom code is preserved.

The customization in this tutorial adds your own image, such as a company logo, to the top of the application screen.

**1. To add the header image:**

- a) Copy the image that you want to use in your header to Generated Hybrid App \travelrequest\html\images in your project folder. Name the copy "header.png".

For example:



- b) In Workspace Navigator, open the file, Generated Hybrid App \travelrequest\html\js\Custom.js for editing.
- c) In `Custom.js`, find the `customAfterHybridAppLoad` method. At the bottom of the function, add this code to display the header image:

```
hwc.customAfterHybridAppLoad = function() {
    .
    .
    .
    var screenKey = getCurrentScreen();
    var form = document.forms[screenKey + "Form"];
    if (form) {
        var topOfFormElem = document.getElementById("topOf" +
screenKey + "Form");
        topOfFormElem.innerHTML = '';
    }
}
```

---

**Note:** For the `src` value, use the name of the image file that you saved in Step a.

---

- d) Save your changes to `Custom.js`.

**2. Run the Hybrid App Generation wizard again.**

## Testing the Hybrid App on the iPhone Simulator

---

Build a sample Hybrid Web Container in the Xcode IDE, and run the Travel Request application on an iPhone simulator.

**1. *Building the iOS Hybrid Web Container Using the Provided Source Code***

Build a sample Hybrid Web Container.

**2. *Configuring iPhone Connection Settings***

Configure settings for the Hybrid App.

**3. *Running the Hybrid App on the iPhone Simulator***

Run the Travel Request application on the iPhone simulator.

**See also**

- *Generating Code for a Hybrid App Package* on page 28
- *Testing the Hybrid App on the Android Emulator* on page 38

## Building the iOS Hybrid Web Container Using the Provided Source Code

---

Build a sample Hybrid Web Container.

**Prerequisites**

- Register the device in Sybase Control Center.
- Have access to a Mac with a supported version of Xcode and the iOS SDK.

See *Supported Hardware and Software* for the most current version information for mobile device platforms and third-party development environments.

**Task**

1. On your Mac, connect to the Microsoft Windows machine where Sybase Unwired Platform is installed:
  - a) In the Apple menu, click **Go > Connect to Server**.
  - b) Enter the name or IP address of the machine.  
For example, `smb://<machine DNS name>` or `smb://<IP Address>`.
2. Copy the `iOS_HWC_<version>.tar.gz` archive from `SUP_HOME\MobileSDK<version>\HybridApp\Containers\iOS\` to a location on your Mac.

In the archive file name, *<version>* is the current Unwired Server version number. For example, `iOS_HWC_2.2.tar.gz`.

3. Unpack `iOS_HWC_<version.>tar.gz`.  
The extraction creates a `HybridWebContainer` directory.
4. In the `HybridWebContainer` directory, double-click **HWC.xcodeproj** to open it in the Xcode IDE.
5. If you are building for a device, you must add provisioning profiles to the project to be able to sign the executable.
  - a) In Xcode, click the **HWC** project and select the HWC target.
  - b) Select the **Build Settings** tab.
  - c) Under the Code Signing section, add code-signing identities for each configuration (Debug, Release, or Distribution) you want to build, depending on how you will deploy the Hybrid App.

When you build the Hybrid Web Container using your provisioning profile, you are creating your own version of the application. You can reuse the bundle ID that is distributed with the HWC template project, but you cannot upgrade your custom-built application through the normal means because on iPhone, Keychain rights depend on the provisioning profile used to sign your application. Consistently use the same provisioning profile across different versions of your application.

The iOS Hybrid Web Container uses the Keychain file to store information. Because of this, you cannot upgrade from one version of the app to another when they are not signed by the same provisioning profile. Follow the instructions in *Using Multiple Hybrid Web Containers on the Same iOS Device* when you build the HWC template source.

6. In Xcode, click **Build > Build** to build the project.

## **Configuring iPhone Connection Settings**

Configure settings for the Hybrid App.

1. In the iPhone simulator Settings window, click **HWC**.
2. Enter these connection settings:
  - **Server name** – machine and domain of the host server where the mobile application project is deployed, or the input server IP address.
  - **Server port** – accept the default port number, 5001.
  - **Farm ID** – accept the default value, 0.
  - **Protocol** – accept the default protocol, HTTP.
  - **Registration** – accept the default type, Manual.
  - **User name** – user that you registered for this device in Sybase Control Center.
  - **Activation code** – the user activation code you specified in Sybase Control Center.

## **Running the Hybrid App on the iPhone Simulator**

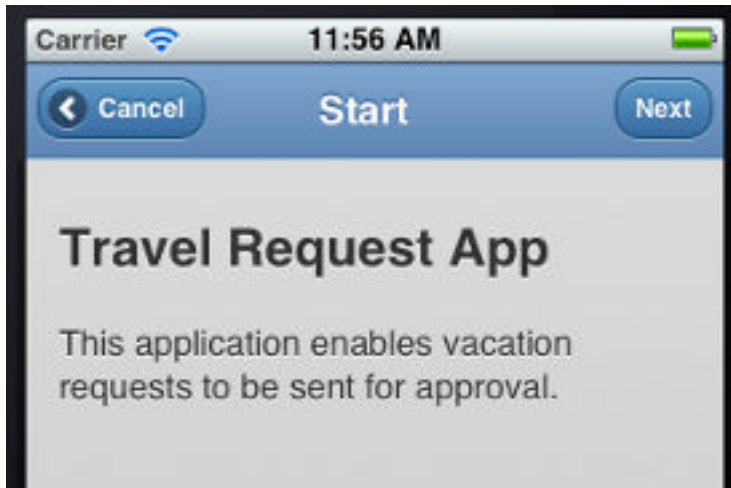
Run the Travel Request application on the iPhone simulator.

1. Click **HWC**.
2. In Hybrid Apps, click **Travel Request**.



3. In the introduction page, click **Open Travel Request**.





4. Fill out the information for the travel request, and click **Create**.

A screenshot of an iPhone screen showing the 'Travel Request' form. The status bar at the top shows 'Carrier', a Wi-Fi signal, the time '11:58 AM', and a battery icon. The app's header bar is blue with a 'Cancel' button on the left, the title 'Travel Request' in the center, and a 'Create' button on the right. Below the header, there are two expandable sections: 'Basic Information' (with a plus icon) and 'More Information' (with a minus icon). The 'Basic Information' section is expanded, showing three input fields: 'Purpose:' with the text 'Hybrid App', 'Status:' with the text 'P', and 'Comment:' with the text 'Ss'. The 'More Information' section is collapsed.

The simulator closes the Hybrid App. The TravelRequest database table is updated on the back end.

## Testing the Hybrid App on the Android Emulator

---

Install and configure the Android simulator software and use it to run the Travel Request application.

### 1. *Configuring the Android Emulator*

Configure an Android emulator for testing a Hybrid App package.

### 2. *Configuring Connection Settings on the Android Emulator*

Configure connection settings on the Android emulator.

### 3. *Running the Hybrid App on the Android Emulator*

Run the Travel Request application on the Android emulator.

### See also

- *Testing the Hybrid App on the iPhone Simulator* on page 34
- *Testing the Hybrid App on the BlackBerry Simulator* on page 47

## Configuring the Android Emulator

---

Configure an Android emulator for testing a Hybrid App package.

---

**Note:** The steps or interface may be different depending on the Android SDK version you are using.

---

### 1. Install the Android SDK.

- a) Go to <http://developer.android.com/sdk/>.
- b) Download the Android SDK (for example, `installer_r21-windows.exe`).

---

**Note:** For this tutorial, do not download the larger SDK starter package (ADT Bundle for Windows). The starter package includes not only the SDK but also the ADT plug-in for Eclipse and a more recent platform than the one shown in this tutorial.

---

- c) In Windows Explorer, double-click the downloaded installer to run it.

Note where the SDK is installed on your system, for example,

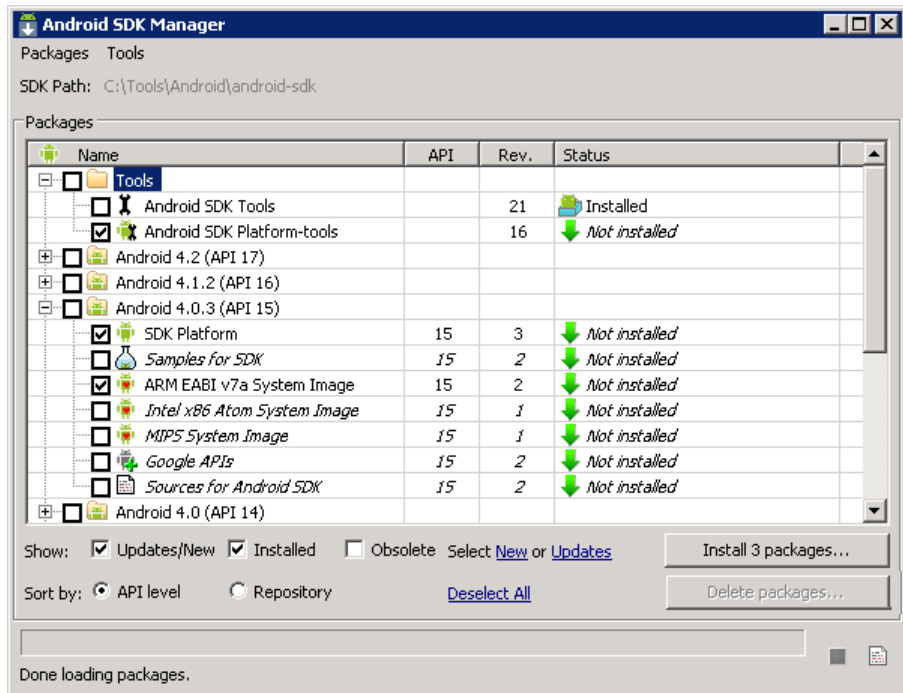
C:\Program Files\Android\android-sdk.

### 2. Install the SDK platform tools:

- a) Run the Android SDK Manager, `android-sdk\SDK Manager.exe`.
- b) In the Android SDK Manager, expand Tools and select **Android SDK Platform-tools**.

Android SDK Tools should already be installed.

- c) Expand **Android 4.0.3 (API 15)** and select these packages:
  - **SDK Platform.**
  - **ARM EABI v7a System Image.**
- d) Click the **Install *n* packages** button.



- e) In Choose Packages to Install, select **Accept All**, then click **Install**. Close the log window when done.
  - f) Close the Android SDK Manager.
3. Run the Android Virtual Device Manager, `android-sdk\AVD Manager.exe`.
  4. Configure and start an Android emulator instance.
    - a) In the AVD Manager, click **New**.
    - b) In the Create new Android Virtual Device window, enter an AVD name and select a supported Android device for this instance.
- For example:

**Create new Android Virtual Device (AVD)** [X]

AVD Name:

Device:

Target:

CPU/ABI:

Keyboard: ☒ Hardware keyboard present

Skin: ☒ Display a skin with hardware controls

Front Camera:

Back Camera:

Memory Options: RAM:  VM Heap:

Internal Storage:

SD Card:

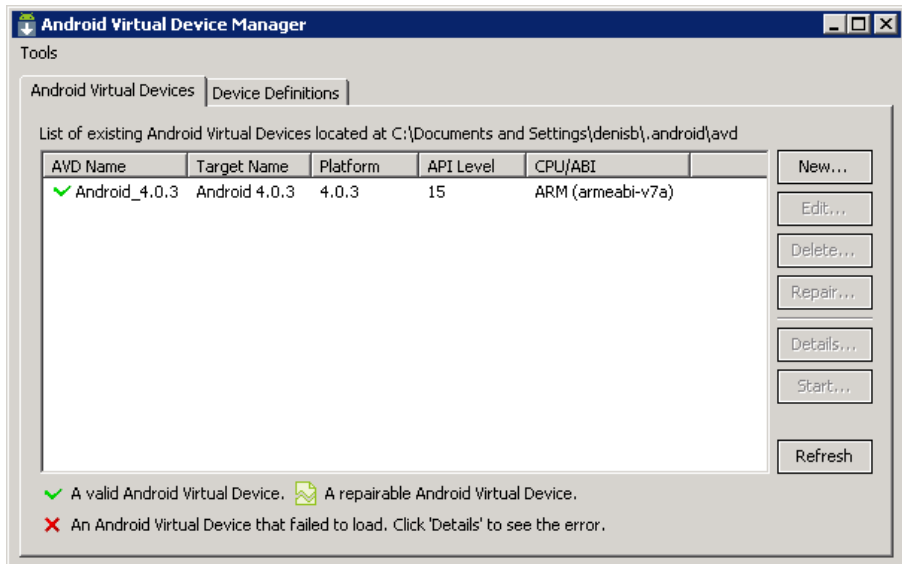
☒ Size:

☐ File:

Emulation Options: ☐ Snapshot ☐ Use Host GPU

☐ Override the existing AVD with the same name

- c) Click **OK** to add the instance to the AVD Manager.



- d) Select the new virtual device and click **Start**.
- e) In Launch Options, click **Launch** to open the Android emulator screen.
5. Install the Hybrid Web Container on the emulator instance:
- With the Android emulator running, open a command prompt window.
  - Run `android-sdk\platform-tools\adb.exe SUP_HOME \MobileSDKversion\HybridApp\Containers\Android \HybridWebContainer.apk`.

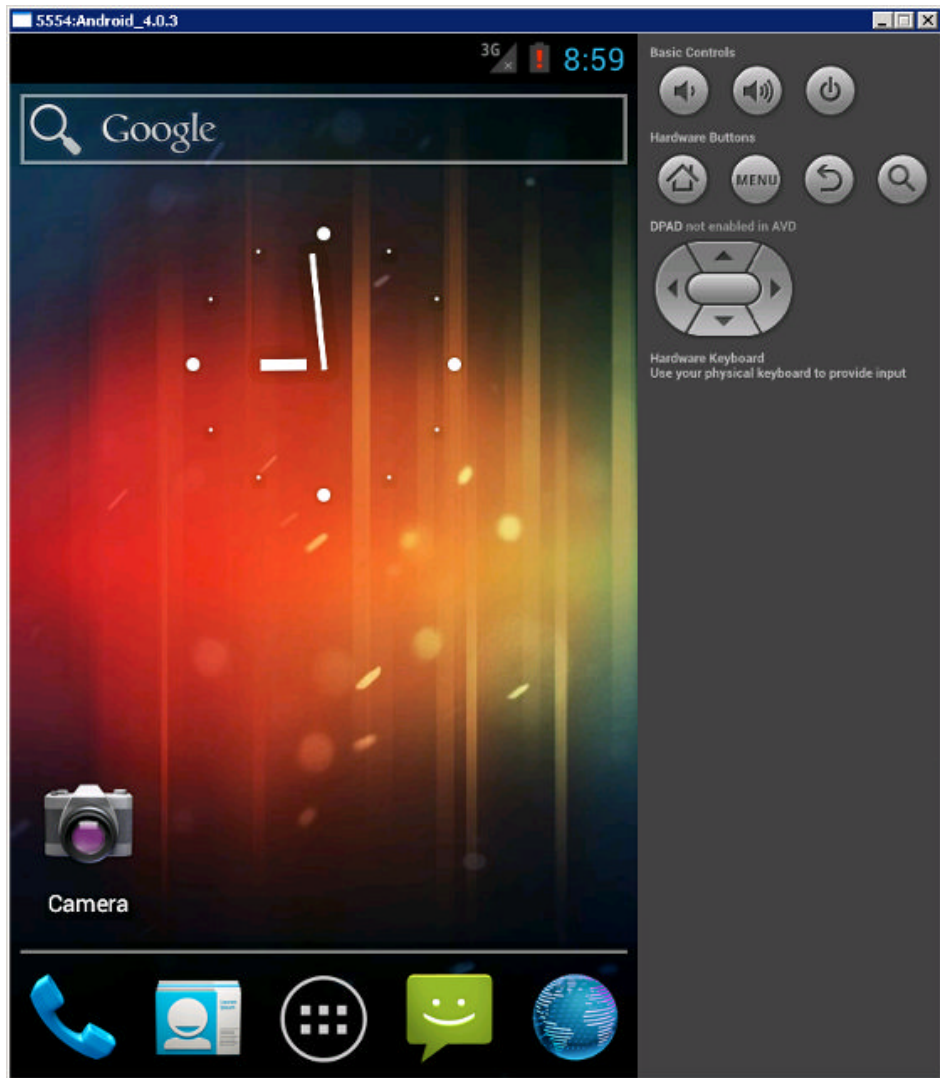
For example:

```
C:\Android\android-sdk\platform-tools\adb install ^
C:\Sybase\UnwiredPlatform\MobileSDK<version>\HybridApp
\Containers\Android\HybridWebContainer.apk
```

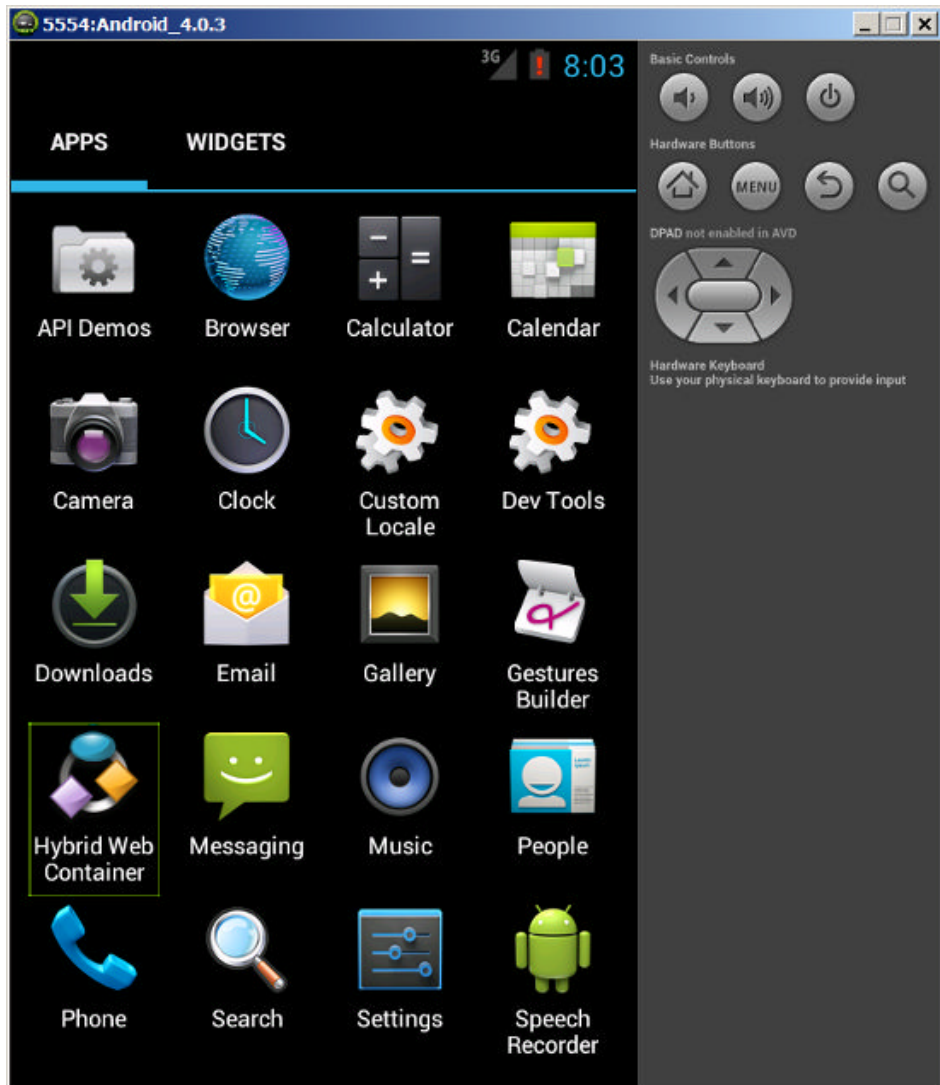
## Configuring Connection Settings on the Android Emulator

Configure connection settings on the Android emulator.

1. In the emulator home page, click the launcher icon.



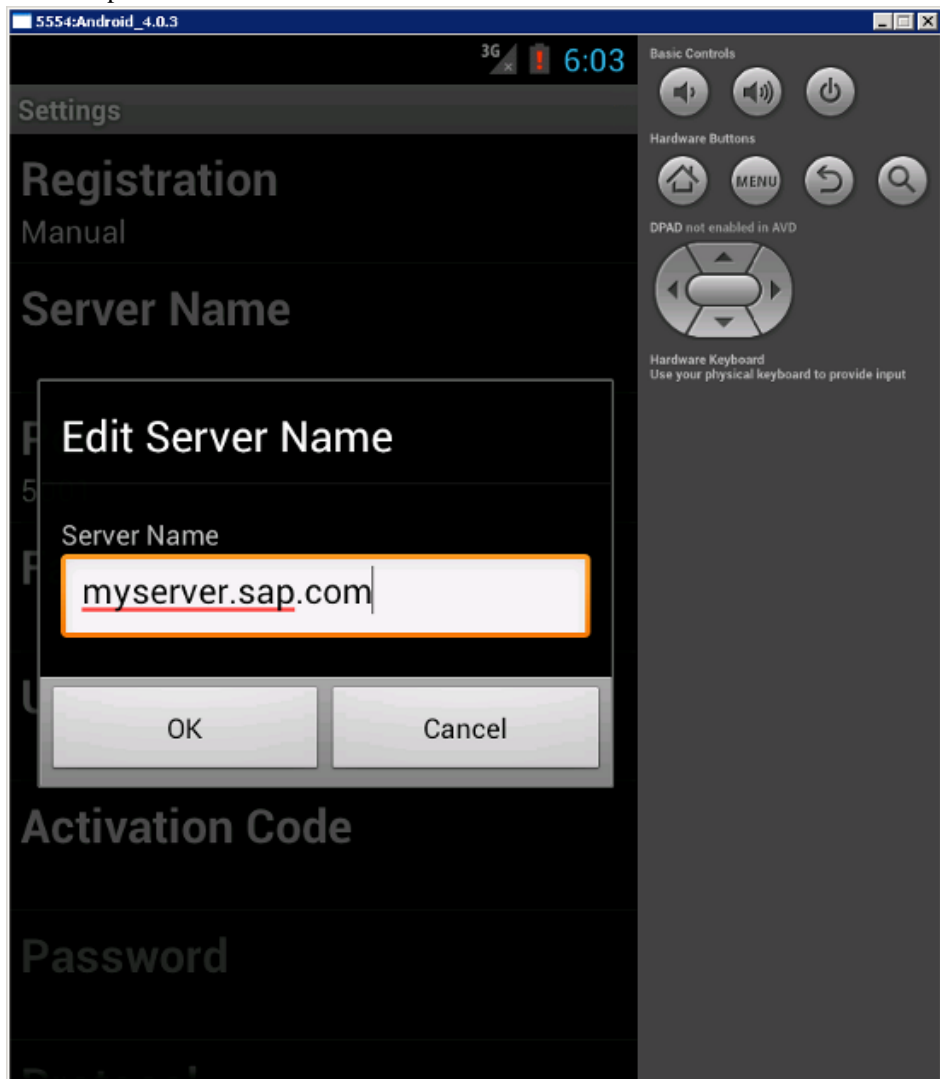
2. In the launcher, find and click the **Hybrid Web Container** icon.



3. Enter a new password and click **OK**.
4. In Sybase Settings, enter the connection settings for your application.
  - **Server name** – machine and domain of the host server where the mobile application project is deployed, or the input server IP address.
  - **Server port** – accept the default port number, 5001.
  - **Farm ID** – accept the default value, 0.
  - **User name** – user that you registered for this device in Sybase Control Center.
  - **Registration** – accept the default type, Manual.

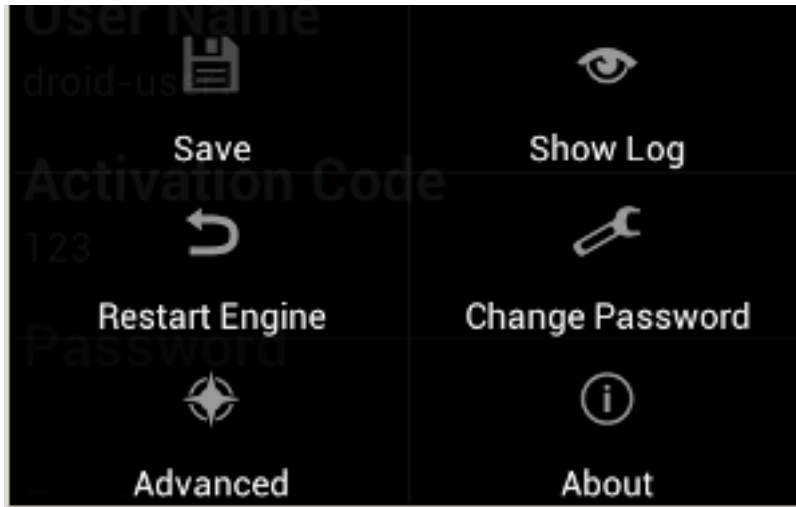
- **Activation code** – the user activation code you specified in Sybase Control Center.
- **Protocol** – accept the default protocol, HTTP.

For example:



5. Click **Menu**. In the menu, click **Save** to save your settings.

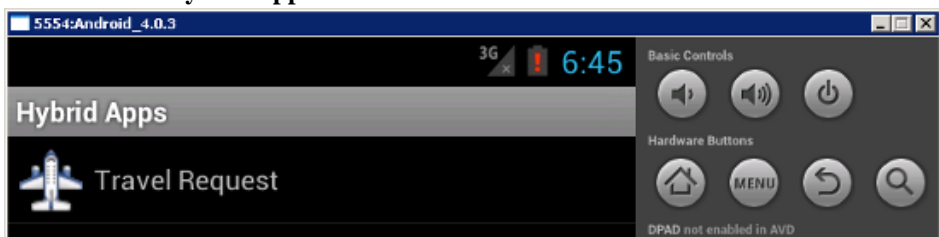




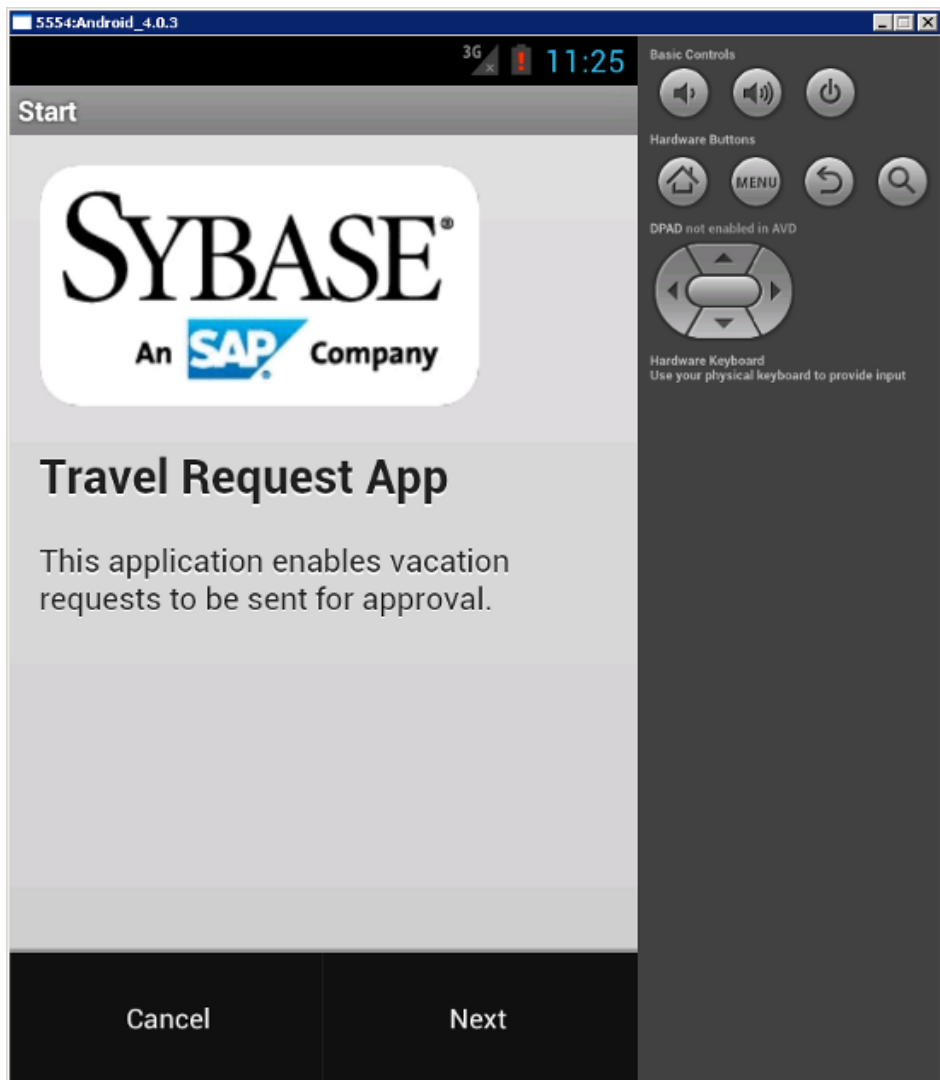
## Running the Hybrid App on the Android Emulator

Run the Travel Request application on the Android emulator.

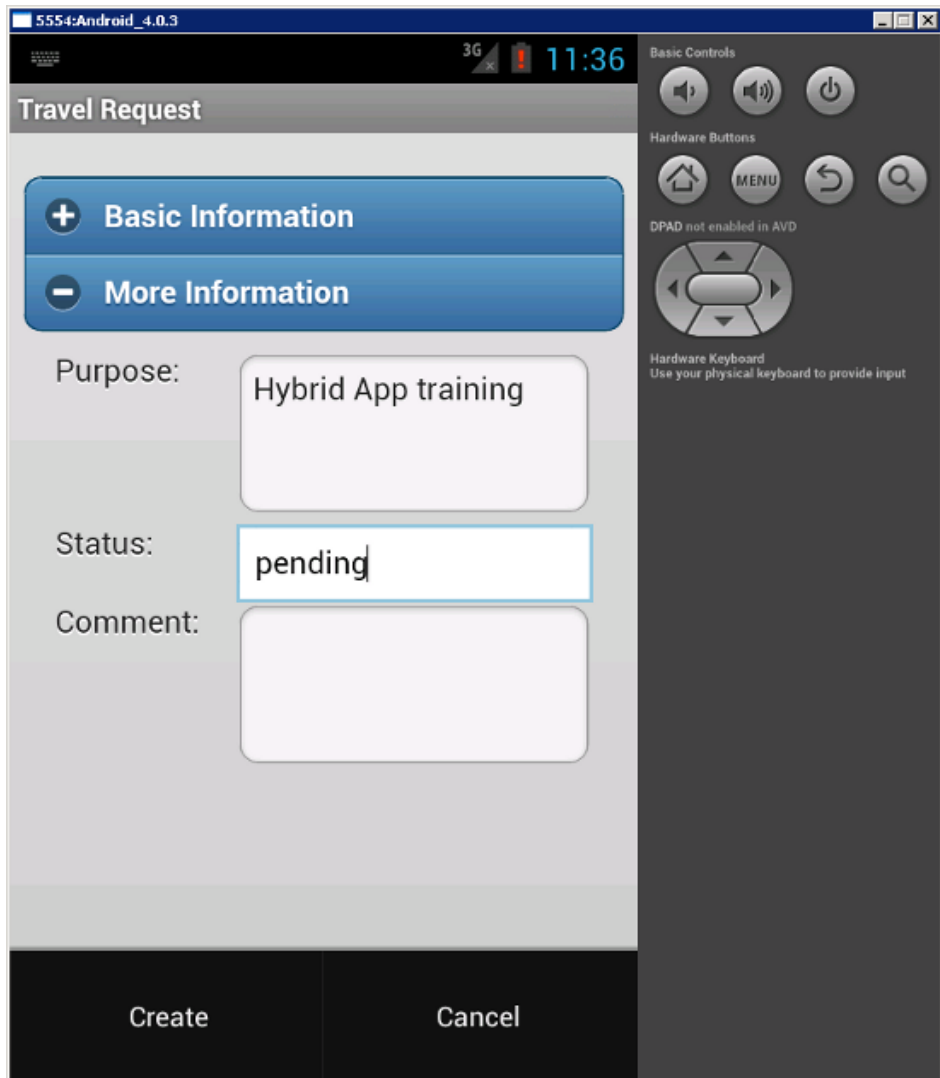
1. Open the Hybrid Web Container screen.  
For example, from the Settings screen, click the **Back** button.
2. Click **Menu > Hybrid Apps**.



3. Click **Travel Request** to open the Hybrid App start screen.
4. Click **Menu > Next** to open the Travel Request screen.



5. Enter your travel request information.
6. Click **Menu** > **Create**.



The Hybrid App closes and the `TravelRequest` database table on the server is updated.

## Testing the Hybrid App on the BlackBerry Simulator

Install and configure the BlackBerry simulator, and use it to run the Travel Request application.

### 1. *Downloading the BlackBerry JDE*

To generate and distribute BlackBerry device applications, download the BlackBerry JDE and its prerequisites from the BlackBerry Web site.

### 2. *Configuring the Hybrid App in the BlackBerry Simulator*

Start the BlackBerry simulator and configure it to connect to the Hybrid App.

### 3. *Running the Hybrid App on the BlackBerry Simulator*

Run the Travel Request application on the BlackBerry simulator.

### See also

- *Testing the Hybrid App on the Android Emulator* on page 38
- *Testing the Hybrid App on the Windows Mobile Emulator* on page 52

## Downloading the BlackBerry JDE

To generate and distribute BlackBerry device applications, download the BlackBerry JDE and its prerequisites from the BlackBerry Web site.

### Prerequisites

- The BlackBerry MDS software requires the 32-bit JDK to be installed, even for 64-bit operating systems.
- A registered BlackBerry developer account to download the JDE.

### Task

Go to the BlackBerry Web site to download and install the BlackBerry JDE.  
The MDS-CS simulator is installed with the BlackBerry JDE.

## Configuring the Hybrid App in the BlackBerry Simulator

Start the BlackBerry simulator and configure it to connect to the Hybrid App.

1. Under your BlackBerry device installation folder, run **clean.bat** to remove any previously installed Hybrid Web Container.

For example, in Windows Explorer, open `C:\Program Files\Research In Motion\BlackBerry JDE 6.0.0\simulator` and double-click `clean.bat`. A command prompt opens, runs `clean.bat`, and closes.

2. Start the Mobile Data System Connection Service (MDS-CS): click **Start > Programs > Research In Motion > BlackBerry JDE 6.0.0 > MDS-CS**.

MDS-CS runs at a command prompt and waits for a BlackBerry device to send data.

3. In your Windows file system, copy the Unwired Platform Hybrid App client files to your BlackBerry simulator.

For example, copy `C:\Sybase\UnwiredPlatform\MobileSDKversion\HybridApp\Containers\BB\*.*` to `C:\Program Files\Research In Motion\BlackBerry JDE 6.0.0\simulator`.

4. Start the BlackBerry simulator.

For example, click **Start > Programs > Research In Motion > BlackBerry JDE 6.0.0 > Device Simulator**.

5. Click through any introductory screens:

- If the end-user license agreement opens, scroll to the end and click **OK** to accept it.
- In the Setup screen, click **Escape** and then **Exit**.

The main window opens:



6. Restart the simulator.

7. In the BlackBerry simulator, configure connection settings for the Hybrid App:

- a) In the main screen, click **All** to access the applications screen.



- b) Click the **Hybrid Web Container** icon to open the Travel Request application.
- c) In the Messages screen, click **Menu > Settings**.
- d) In the Connection screen, enter the connection settings.
  - **Server name** – machine and domain of the host server where the mobile application project is deployed, or the input server IP address.
  - **Server port** – accept the default port number, 5001.
  - **Farm ID** – accept the default value, 0.
  - **User name** – user that you registered for this device in Sybase Control Center.
  - **Registration** – accept the default type, Manual.
  - **Activation code** – the user activation code you specified in Sybase Control Center.
  - **Protocol** – accept the default protocol, HTTP.

For example:



- e) Click **Menu > Save**. Click **OK** if prompted to confirm.

## **Running the Hybrid App on the BlackBerry Simulator**

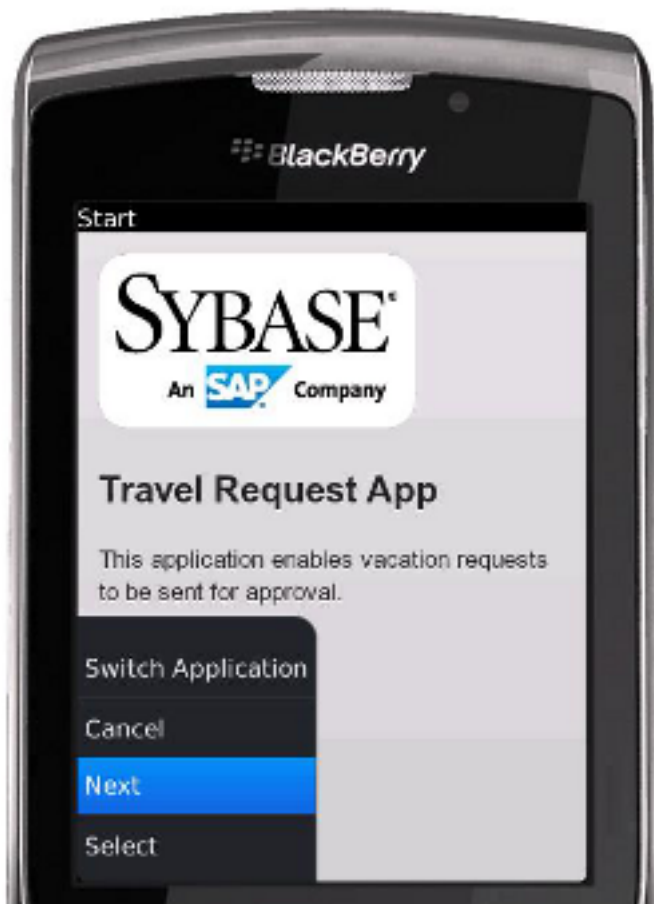
Run the Travel Request application on the BlackBerry simulator.

---

**Note:** This tutorial was developed using a supported version of the BlackBerry simulator. If you use a different supported version, the interface might differ in some details.

---

1. Start your BlackBerry simulator instance if it is not already running:
2. In the emulator, click **All**.
3. Click the **Hybrid Web Container** icon.
4. In the Messages screen, click **Menu > Hybrid Apps**.
5. In the Hybrid Apps screen, click **Travel Request**.
6. In the Start screen, click **Menu > Next**.



7. In the Travel Request screen, open each accordion control and enter your travel request information.
8. Click **Menu > Create** to submit your changes to the server.



The Hybrid App closes and the `TravelRequest` database table on the server is updated.

## Testing the Hybrid App on the Windows Mobile Emulator

Install and configure the Windows Mobile synchronization software and emulator, and use it to run the Travel Request application.

### 1. *Installing Microsoft Synchronization Software*

Install and configure Microsoft synchronization software so you can deploy and run an application on a Windows Mobile emulator.



**2. *Configuring the Windows Mobile Emulator***

Configure the Windows Mobile emulator for Hybrid App package deployment.

**3. *Configuring Connection Settings on Windows Mobile***

Configure the connection settings on the Windows Mobile emulator.

**4. *Running the Hybrid App on the Windows Mobile Emulator***

Run the Travel Request application on the Windows Mobile emulator.

**See also**

- *Testing the Hybrid App on the BlackBerry Simulator* on page 47
- *Verifying the Data on the Back-end Database* on page 65

## **Installing Microsoft Synchronization Software**

Install and configure Microsoft synchronization software so you can deploy and run an application on a Windows Mobile emulator.

---

**Note:** These instructions describe how to install Microsoft ActiveSync for Windows XP. If you are using Windows Vista, Windows 7, or Windows 2008, install Virtual PC 2007 SP1 and Windows Mobile Device Center to manage synchronization settings. Download the Windows Mobile Device Center from <http://www.microsoft.com/en-us/download/details.aspx?id=15> and follow Microsoft instructions for installing and using that software instead of this procedure.

---

**1. Download Microsoft ActiveSync:**

- a) In a Web browser, open the Windows Phone page at <http://www.microsoft.com/windowsmobile/en-us/help/synchronize/device-synch.mspx>.
- b) Follow the instructions to select and download the sync software for the system's operating system. Windows XP requires ActiveSync version 4.5.
- c) In the Windows Phone downloads page, click the **ActiveSync** button.
- d) Download the ActiveSync installation file and save it to your local system.

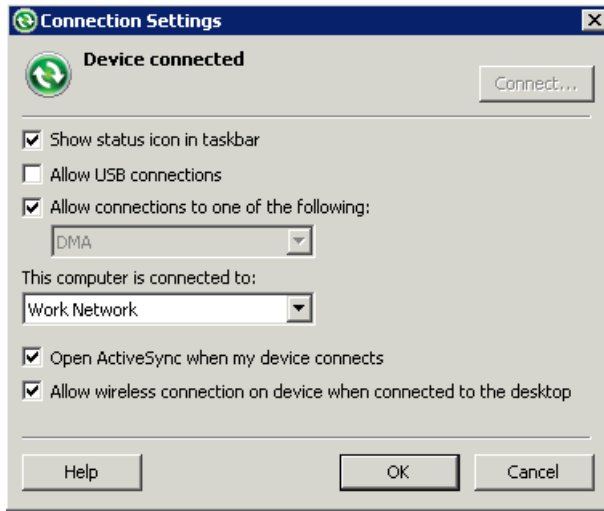
**2. Run the downloaded installation file.**

For example, double-click **setup.msi** in Windows Explorer.

**3. When the installation is complete, restart the system.****4. Start ActiveSync if it does not start automatically.**

For example, click **Start > Programs > Microsoft ActiveSync**.

**5. Click **File > Connection Settings**.****6. Select **Allow connections to one of the following**, then select **DMA**.****7. Select **Work Network** for "This computer is connected to".**



8. Click **OK**.

## **Configuring the Windows Mobile Emulator**

Configure the Windows Mobile emulator for Hybrid App package deployment.

### **Prerequisites**

- Install Windows Mobile Professional emulator images to test and run the sample application. Emulator images are available individually, and some are installed with Visual Studio and Windows Mobile SDK. For example, the emulator used for this tutorial is included in the Windows Mobile 6.5.3 Developer Tool Kit, which you can download from the Microsoft Download Center (<http://www.microsoft.com/download>).
- Install the Microsoft Device Emulator, if it is not already installed (for example, as part of Visual Studio or the Windows Mobile SDK). Go to the Microsoft Download Center, search for “Device Emulator”, and follow the links to download and install the Standalone Release of the Microsoft Device Emulator.
- Download the Microsoft .NET Compact Framework Redistributable (NETCFSetupv35.msi) from the Microsoft Download Center to your system.

---

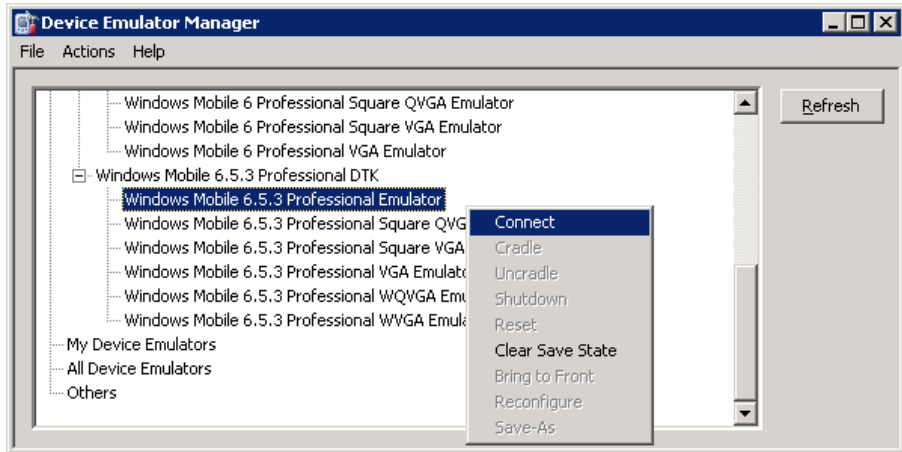
**Note:** Do not install the Redistributable on your system immediately; install it on the emulator later in this task.

---

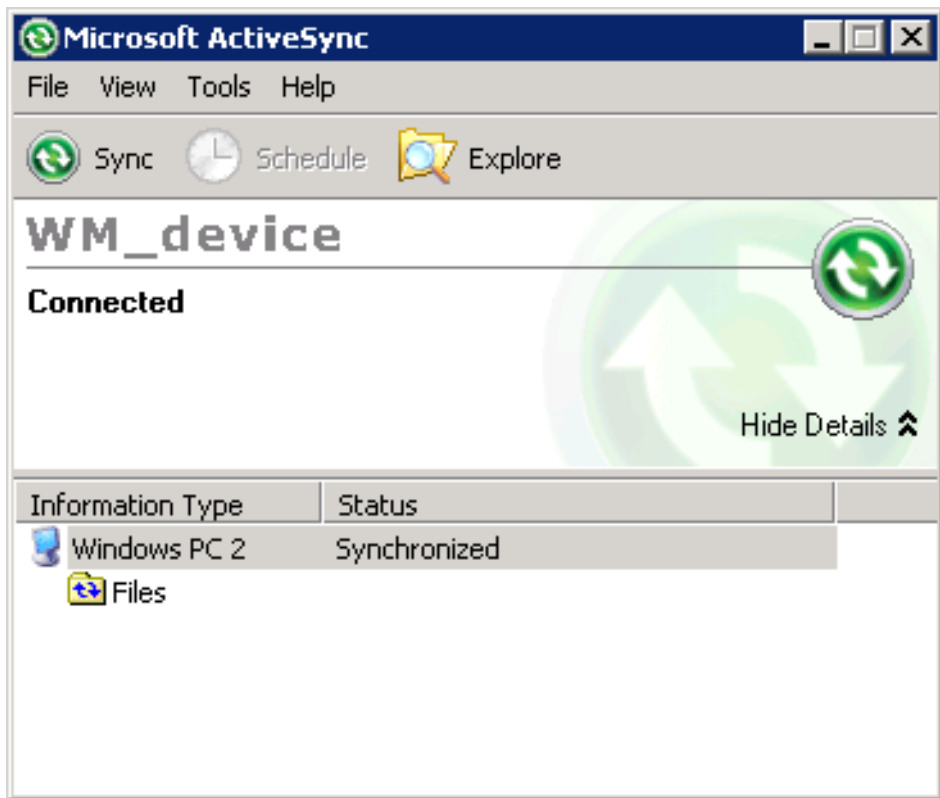
### **Task**

This tutorial uses examples based on one of the supported emulators. The screens and steps for configuring other supported emulators might be different. See *Supported Hardware and Software* for the most current version information for mobile device platforms and third-party development environments.

1. Start the synchronization software if it is not already running.  
For example, on Windows XP, start Microsoft ActiveSync. On Windows Vista, Windows 7, or Windows 2008, start the Windows Mobile Device Center.
2. Start the Device Emulator Manager and select an emulator to run.  
For example:
  - a. Double-click **C:\Program Files\Microsoft Device Emulator\1.0\dvcemumanager.exe**.
  - b. In the Device Emulator Manager, right-click the device you want to run and choose **Connect** to open the emulator.



- c. In the Device Emulator Manager, right-click the device again and click **Cradle**.
3. The synchronization software runs and connects to your device. If the Pocket PC Sync Setup wizard opens, follow the instructions to configure synchronization. Accept all the defaults, or optionally, change the default computer name and the information types to synchronize. Click **Finish** to save your settings.  
ActiveSync completes the connection:



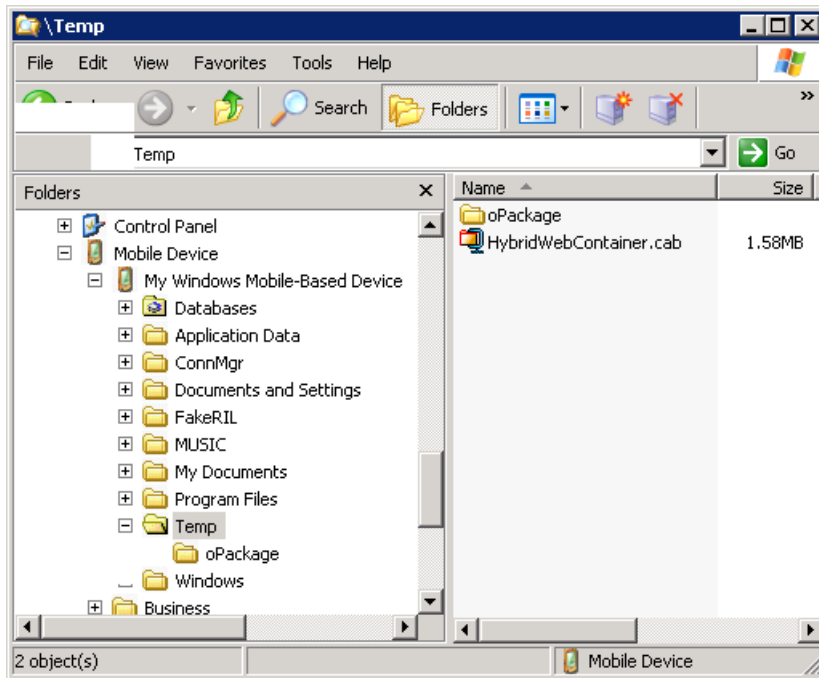
4. Run `NETCFSetupv35.msi` to install the Microsoft .NET Compact Framework Redistributable on your running emulator. Follow the setup wizard instructions, and click **Finish** to close the wizard when you are done.

---

**Note:** Be sure to run `NETCFSetupv35.msi` while your emulator is running; otherwise the .NET Compact Framework Redistributable is not installed correctly.

---

5. In Windows Explorer, copy `SUP_Home\MobileSDKversion\HybridApp\Containers\WM\HybridWebContainer.cab` file to a folder in the Mobile Device file system. If prompted by the File Conversion dialog to confirm the conversion of synchronized files, click **OK**.  
For example:



6. On the device emulator, open File Explorer and browse to the folder to which you copied the CAB file. Click the file once to install the Hybrid Web Container on your emulator.

## **Configuring Connection Settings on Windows Mobile**

Configure the connection settings on the Windows Mobile emulator.

1. In the emulator, open the Start screen and click **Hybrid Web Container**.



2. In the Messages screen, click **Settings**.
3. In the Connection screen, enter the connection settings.
  - **Server name** – machine and domain of the host server where the mobile application project is deployed, or the input server IP address.
  - **Server port** – accept the default port number, 5001.

- **Farm ID** – accept the default value, 0.
- **User name** – user that you registered for this device in Sybase Control Center.
- **Registration** – accept the default type, `Manual`.
- **Activation code** – the user activation code you specified in Sybase Control Center.
- **Protocol** – accept the default protocol, `HTTP`.

For example:



4. Click **Save**.
5. Click **OK**.

---

**Tip:** To view the device log at any time, return to the Settings screen, click **Menu** > **Show log**.

---



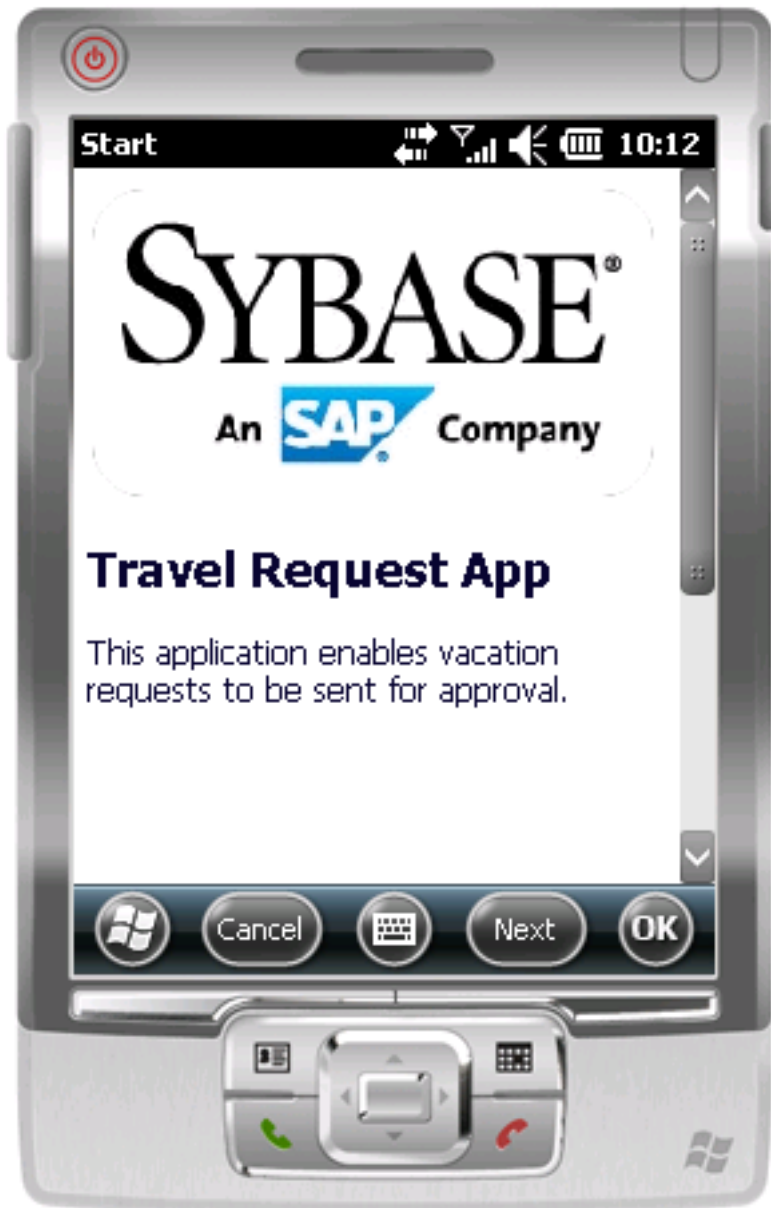
## **Running the Hybrid App on the Windows Mobile Emulator**

Run the Travel Request application on the Windows Mobile emulator.

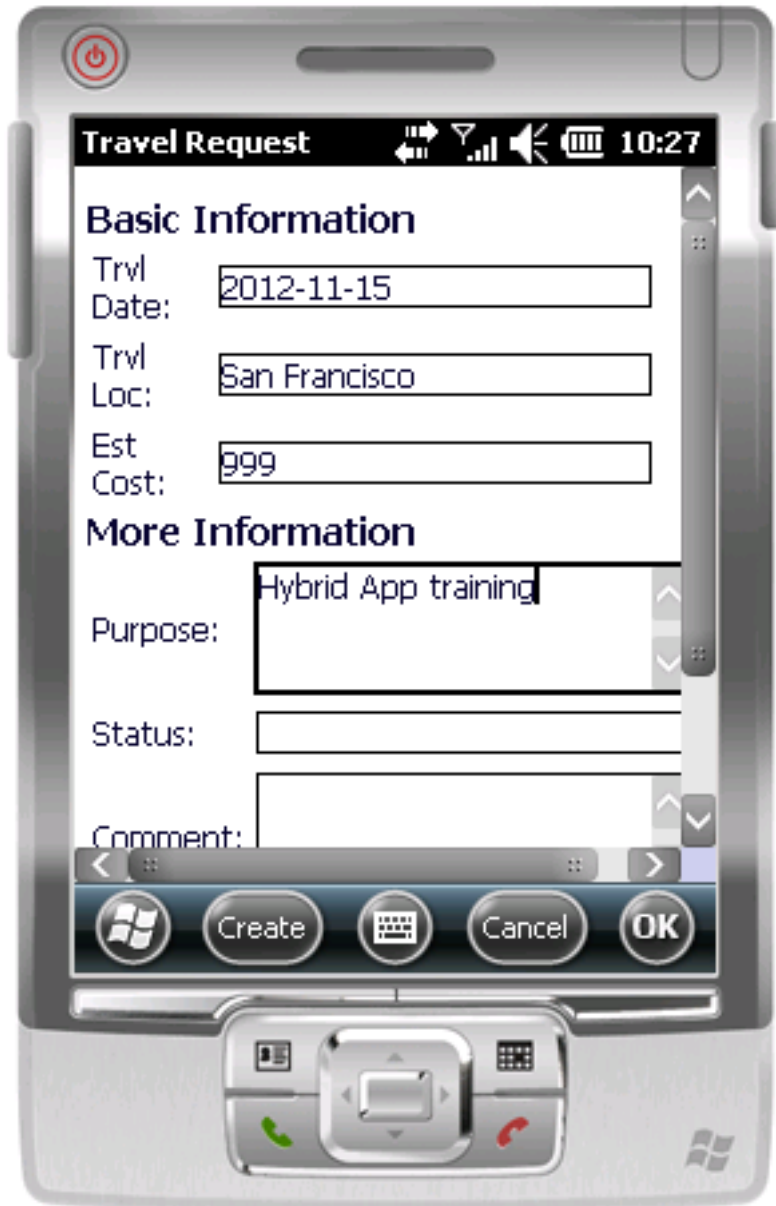
1. In the emulator, open the Start screen and click **Hybrid Web Container**.
2. In the Messages screen, click **Hybrid Apps**.
3. In Hybrid Apps, click **Travel Request**:



4. In the Start screen, click **Next**.



5. Enter your travel request information.



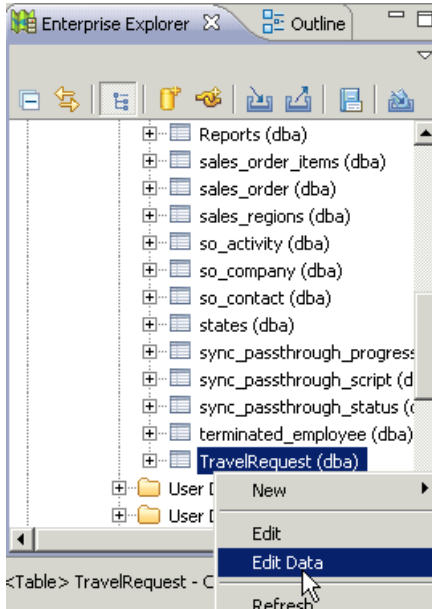
**6. Click `Create`.**

The emulator closes the Hybrid App and updates the `TravelRequest` database table on the back end.

## Verifying the Data on the Back-end Database

After submitting a travel request in an emulator, verify that the information is updated in the database.

1. In Sybase Unwired WorkSpace, expand the sample database in Enterprise Explorer.
2. In the Tables folder, right-click **TravelRequest** and select **Edit Data**.



3. In the Table Data Filter dialog, accept the default settings and click **OK**.  
The TravelRequest table opens, displaying the new row.

### See also

- *Testing the Hybrid App on the Windows Mobile Emulator* on page 52



# Learn More About Sybase Unwired Platform

Once you have finished, try some of the other samples or tutorials, or refer to other development documents in the Sybase Unwired Platform documentation set.

Check the Product Documentation Web site regularly for updates: <http://sybooks.sybase.com/sybooks/sybooks.xhtml?id=1289&c=firsttab&a=0&p=categories>, then navigate to the most current version.

## *Tutorials*

Try out some of the other getting started tutorials available on the Product Documentation Web site to get a broad view of the development tools available to you.

## *Example Projects*

An example project contains source code for its associated tutorial. It does not contain the completed tutorial project. Download example projects from the SAP® Community Network (SCN) at <http://scn.sap.com/docs/DOC-8803>.

## *Samples*

Sample applications are fully developed, working applications that demonstrate the features and capabilities of Sybase Unwired Platform.

Check the SAP® Development Network (SDN) Web site regularly for new and updated samples: <https://cw.sdn.sap.com/cw/groups/sup-apps>.

## *Online Help*

See the online help that is installed with the product, or available from the Product Documentation Web site.

## *Developer Guides*

Learn best practices for architecting and building device applications:

- *Mobile Data Models: Using Data Orchestration Engine* – provides information about using Sybase Unwired Platform features to create DOE-based applications.
- *Mobile Data Models: Using Mobile Business Objects* – provides information about developing mobile business objects (MBOs) to fully maximize their potential.
- *SAP Mobile WorkSpace: Mobile Business Object Development* – provides information about using SAP Mobile Platform to develop MBOs and generate Object API code that can be used to create native device applications and Hybrid Apps.

Use the appropriate API to create device applications:

- *Developer Guide: Android Object API Applications*
- *Developer Guide: BlackBerry Object API Applications*

## Learn More About Sybase Unwired Platform

- *Developer Guide: iOS Object API Applications*
- *Developer Guide: Windows and Windows Mobile Object API Applications*
- *Developer Guide: Hybrid Apps*
- *Developer Guide: OData SDK*
- *Developer Guide: REST API Applications*

Customize and automate:

- *Developer Guide: Unwired Server Runtime > Management API* – customize and automate system administration features.

Javadoc and HeaderDoc are also available in the installation directory.



# Index

## A

- Accordion control 25
- ActiveSync, installing and configuring 53
- Android emulator
  - configuring 38
  - connection settings 41
- applications
  - generating code for device 28

## B

- BlackBerry JDE, downloading 48
- BlackBerry simulator
  - connection settings 48
  - downloading 48
  - running 51

## C

- Collapsible control 25
- creating a new key 22

## D

- deploying
  - mobile business objects 12
- device applications
  - generating code for 28

## E

- emulator
  - connection settings, configuring 41
- emulator connection settings, configuring 57
- emulator, registering 16
- example projects 1

## F

- Flow Design page 17

## G

- generating
  - code for a device application 28

## H

- HtmlView control 22
- Hybrid App Designer
  - wizard 17
- Hybrid App package tutorial 1
- Hybrid App screenflow 22
  - adding an operation 19
  - creating 17
- Hybrid Apps
  - deploying projects 12
  - generating code for 28
  - running on Android emulator 45
  - running on BlackBerry simulator 51
  - running on iPhone simulator 36
  - running on Windows Mobile emulator 61
- Hybrid Web Container
  - building using source code 34

## K

- key
  - creating a new 22
  - defining default value for 22

## M

- Microsoft ActiveSync, installing and configuring
  - 53
- mobile business object
  - operation 19
  - Travel Request screen 19
- mobile business object tutorial 1
- mobile business objects
  - deploying 12

## O

- Object API tutorials 1

## R

- registering the emulator in SCC 16

## Index

### S

- samples
  - downloading 67
- Screen Design page 22
- Sybase Control Center
  - connecting to 5
  - register device 16
  - registering the emulator 16
  - status 16
- Sybase Mobile SDK
  - installing 3
- Sybase Unwired Platform
  - documentation resources 67
  - getting started 3
  - installing 3
- Sybase Unwired WorkSpace
  - basics 5
  - how to access online help 5
  - starting 4
- Sybase Unwired WorkSpace basics 5

- synchronization software 53

### T

- TravelRequest database table 45, 51, 61
- troubleshooting information 5
- tutorials 1
  - downloading 67

### U

- Unwired Platform Runtime
  - installing 3
- Unwired Platform services 4
- Unwired Server
  - deploying MBOs to 12

### W

- Windows emulator
  - connection settings 57