

Appeon Installation Guide for WebLogic

Appeon® 6.2 for PowerBuilder®
WINDOWS

DOCUMENT ID: DC00807-01-0620-02

LAST REVISED: July 2009

Copyright © 2009 by Appeon Corporation. All rights reserved.

This publication pertains to Appeon software and to any subsequent release until otherwise indicated in new editions or technical notes. Information in this document is subject to change without notice. The software described herein is furnished under a license agreement and may be used or copied only in accordance with the terms of that agreement.

No part of this publication may be reproduced, transmitted or translated in any form or by any means, electronic, mechanical, manual, optical or otherwise, without the prior written permission of Appeon Corporation.

Appeon, the Appeon logo, Appeon Developer, Appeon Enterprise Manager, AEM, Appeon Server and Appeon Server Web Component are trademarks of Appeon Corporation.

Sybase, Adaptive Server Anywhere, Adaptive Server Enterprise, iAnywhere, PowerBuilder, Sybase Central and jConnect for JDBC are trademarks or registered trademarks of Sybase, Inc.

Java and JDBC are trademarks or registered trademarks of Sun Microsystems, Inc.

All other company and product names used herein may be trademarks or registered trademarks of their respective companies.

Use, duplication or disclosure by the government is subject to the restrictions set forth in subparagraph (c)(1)(ii) of DFARS 52.227-7013 for the DOD and as set forth in FAR 52.227-19(a)-(d) for civilian agencies.

Appeon Corporation, 1/F, Shell Industrial Building, 12 Lee Chung Street, Chai Wan District, Hong Kong.

Contents

1 About This Book	1
1.1 Audience	1
1.2 How to use this book	1
1.3 Related documents	1
1.4 If you need help	2
2 Introduction	3
2.1 Overview	3
2.2 Section 508 compliance	3
2.3 System architecture	3
2.4 Appeon editions	4
2.5 Appeon components	5
2.5.1 Appeon Developer	5
2.5.2 Appeon Server	5
2.5.3 Appeon Server Web Component (for third-party Web servers)	5
2.5.4 Appeon Help	6
3 Installation Requirements	7
3.1 Client requirements	7
3.1.1 Software requirements	7
3.1.2 Hardware requirements	7
3.2 Appeon Server requirements	7
3.2.1 Software requirements	7
3.2.2 Hardware requirements	7
3.2.3 (Optional) Third-party Web server	7
3.3 Appeon Developer requirements	8
3.3.1 Software requirements	8
3.3.2 Hardware requirements	8
3.4 Database server requirements	8
4 Installing Appeon 6.2	10
4.1 Overview	10
4.2 Installation scenarios	10
4.2.1 Overview	10
4.2.2 Developer PC	11
4.2.3 Remote Appeon Server using WebLogic HTTP server	11
4.2.4 Remote Appeon Server using a third-party Web server	11
4.2.5 Appeon Server Cluster	12
4.3 Appeon 6.2 installation	12
4.3.1 Starting the installation	13
4.3.2 Appeon Server installation	17
4.3.3 Appeon Developer installation	29
4.3.4 Appeon Server Web Component installation (for third-party Web servers only)	35
4.3.5 Appeon Help installation	38
4.4 Starting/Stopping Appeon Server	41

4.4.1 Turn off UAC on Windows Vista and Windows 2008	41
4.4.2 Starting Appeon Server.....	42
4.4.3 Logging in to WebLogic Server Administration Console	43
4.4.4 Stopping Appeon Server	45
5 Configuring Appeon Server Cluster	46
5.1 Overview	46
5.2 Configuration instructions.....	46
6 Post-Installation Configuration Tasks.....	47
6.1 Windows account with administrator privileges	48
6.2 Internet Explorer configuration	48
6.2.1 Overview	48
6.2.2 Verifying Internet Explorer settings are correct	48
6.2.3 Security settings.....	49
6.2.4 Add-on settings (for Internet Explorer 7)	50
6.2.5 Internet Explorer files caching.....	50
6.2.6 Internet Explorer advanced settings.....	51
6.2.7 Additional configurations of IE 7 under Windows Vista	51
6.3 System language settings	55
6.4 Checking the version of JScript.dll	56
6.5 Configuration for supporting dynamic DataWindows.....	56
6.6 Configuration for ASE Chained mode issue	56
6.6.1 Known issue with ASE Chained Mode.....	56
6.6.2 Stored procedures provided for solving the issue	57
7 Uninstalling Appeon 6.2	58
7.1 Overview	58
7.2 Uninstalling Appeon Developer	58
7.3 Uninstalling Appeon Server.....	61
7.4 Uninstalling Appeon Server Web Component (for third-party Web servers only)64	
7.4.1 Web Component uninstall if multiple third-party Web servers are involved67	
7.5 Uninstalling Appeon Help	67
8 Technical Support.....	71
Index	72

1 About This Book

1.1 Audience

This book is for users who want to install Appeon® 6.2 for PowerBuilder® for WebLogic Windows.

1.2 How to use this book

There are eight chapters in this book.

Chapter 1: About This Book

A general description of this book

Chapter 2: Introduction

An overview of Appeon for PowerBuilder for WebLogic Windows and its system architecture

Chapter 3: Installation Requirements

The system requirements for installing Appeon for PowerBuilder for WebLogic Windows

Chapter 4: Installing Appeon 6.2

Instructions for installing Appeon Server, Appeon Developer and Appeon Server Web Component

Chapter 5: Configuring Appeon Server Cluster

Instructions for configuring an Appeon Server cluster

Chapter 6: Post-Installation Configuration Tasks

Instructions on configurations required for Appeon system architecture that affect the running of all applications

Chapter 7: Uninstalling Appeon 6.2

Instructions for uninstalling Appeon for PowerBuilder for WebLogic Windows

Chapter 8: Technical Support

Important information for technical support

1.3 Related documents

Appeon provides the following user documents to assist you in understanding Appeon for PowerBuilder and its capabilities:

- **Appeon Demo Applications Tutorial:**
Introduces Appeon's demo applications, including the Appeon Sales Application Demo, Appeon Code Examples, Appeon ACF Demo, and Appeon Pet World, which show Appeon's capability in converting PowerBuilder applications to the Web.
- **Appeon Developer User Guide (or Working with Appeon Developer Toolbar)**

Provides instructions on how to use the Appeon Developer toolbar in Appeon 6.2.

Working with Appeon Developer Toolbar is an HTML version of the Appeon Developer User Guide.

- **Appeon Server Configuration Guide**

Provides instructions on how to configure Appeon Server Status Monitor, establish connections between Appeon Server and database server and configure AEM for maintaining Appeon Server and Appeon deployed Web applications.

- **Appeon Supported Features Guide (or Appeon Features Help):**

Provides a detailed list of supported PowerBuilder features which can be converted to the Web with Appeon 6.2 as well as which features are unsupported.

Appeon Features Help is an HTML version of the *Appeon Supported Features Guide*.

- **Appeon Installation Guide:**

Provides instructions on how to install *Appeon for PowerBuilder* successfully.

- **Appeon Migration Guide:**

A process-oriented guide that illustrates the complete diagram of the Appeon Web migration procedure and various topics related to steps in the procedure, and includes a tutorial that walks the user through the entire process of deploying a small PowerBuilder application to the Web.

- **Appeon Performance Tuning Guide:**

Provides instructions on how to modify a PowerBuilder application to achieve better performance from its corresponding Web application.

- **Appeon Troubleshooting Guide:**

Provides information on troubleshooting issues; covering topics such as product installation, Web deployment, AEM and Web application runtime.

- **Introduction to Appeon:**

Guides you through all the documents included in Appeon 6.2 for PowerBuilder.

- **New Features Guide (or What's New in Appeon):**

Introduces new features and changes in Appeon 6.2 for PowerBuilder.

What's New in Appeon is an HTML version of the New Features Guide.

1.4 If you need help

Each Sybase installation that includes a support contract has one or more designated people who are authorized to contact Sybase Technical Support or an Authorized Sybase Support Partner. If you have any questions about this product or need assistance during the installation process, ask a designated person to contact Sybase Technical Support or an Authorized Sybase Support Partner listed in your support contract. You may access the Technical Support Web site at <http://www.sybase.com/support>.

2 Introduction

2.1 Overview

Apeon for PowerBuilder deploys entire PowerBuilder applications to the Web automatically.

From the native source code of PowerBuilder applications, Apeon for PowerBuilder can generate *bona fide* n-Tier Web applications that precisely replicate the Client/Server user interface with HTML running in standard Microsoft Web browsers. These Web applications offer the rich user experience of the original PowerBuilder applications and deliver the superior Quality Of Service (QOS) of the n-Tier Web architecture and J2EE platform, as well as greater availability, scalability, security and reliability.

Apeon for PowerBuilder allows the entire Web application conversion process to be executed within the PowerBuilder IDE. It does not require the developer to write a single line of HTML, Java, .NET or JavaScript code. Only standard PowerBuilder programming skills are required.

With Apeon for PowerBuilder, enterprises can continue to use PowerBuilder to build Client/Server applications. At the click of a button, the applications can be deployed to the Web. Enterprises can also transform existing Client/Server applications into Web applications. It is no longer a daunting task to develop Web applications. The task can become a familiar and easy routine for optimizing existing PowerBuilder applications or building new PowerBuilder applications.

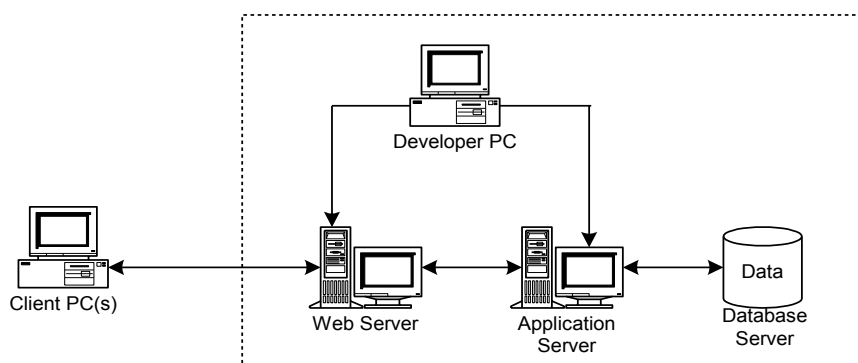
2.2 Section 508 compliance

The Apeon installation program conforms to the US Government Section 508 Accessibility Guidelines.

2.3 System architecture

Apeon for PowerBuilder works with standard n-Tier Web architecture (see Figure 2-1). Each tier serves a specific purpose in the architecture, though it may not necessarily reside in the same physical machine. For example, the Web server, application server and database server can reside in one machine or in different machines. A single tier may also be spread across multiple physical machines. For example, the application server can consist of an Apeon Server cluster involving multiple computers to provide load balancing and failover.

Figure 2-1: Apeon for PowerBuilder system architecture



Each tier should have appropriate Appeon components and/or third-party software installed according to its role within the architecture. The following table briefly lists the tiers, their purposes and the required Appeon/third-party software.

Table 2-1: Tiers in the Appeon Web architecture

Tier	Purpose	Appeon Component	Third-party Software
Client	Runs Appeon Web applications	None	The default Microsoft Internet Explorer Web browser
Developer PC	Deploys your PowerBuilder application to the testing and production Web environments with the n-Tier architecture.	Appeon Developer	PowerBuilder Internet Explorer
Web Server	Hosts the presentation layer of Appeon Web applications, responds to incoming requests from Client PC's and dispatches requests to the application server.	Appeon Server Web Component	WebLogic HTTP Server or any WebLogic-compatible Web server, such as Apache or IIS.
Application Server	Hosts the DataWindows and n-Tier components of Appeon Web applications, provides necessary runtime services to the Web application, such as DataWindow retrieval and update, execution of business logic, security authentication and printing.	Appeon Server	Oracle WebLogic
Database Server	Hosts the application database.	None	JDBC-compliant RDBMS supported by Appeon. Please see Section 3.4: Database server requirements for more information.

2.4 Appeon editions

Appeon 6.2 for PowerBuilder for WebLogic contains the following editions. The Appeon Server clustering service is provided in the Enterprise Edition only.

Table 2-2: Appeon editions

Edition	Platform	Component
Enterprise Edition	Windows	<ul style="list-style-type: none"> • Appeon Server • Appeon Server Web Component • Appeon Help
Workgroup Edition	Windows	<ul style="list-style-type: none"> • Appeon Server • Appeon Server Web Component • Appeon Help

Developer Edition	Windows	<ul style="list-style-type: none"> • Appeon Developer • Appeon Server • Appeon Server Web Component • Appeon Help
Trial Edition	Windows	<ul style="list-style-type: none"> • Appeon Developer • Appeon Server • Appeon Server Web Component • Appeon Help

2.5 Appeon components

2.5.1 Appeon Developer

Appeon Developer is an add-on to PowerBuilder that allows applications to be deployed to the Web with Appeon Server.

When Appeon Developer is installed, it provides a set of tools that enable the entire PowerBuilder-to-Web conversion process to take place within the PowerBuilder IDE. These tools are accessed via a toolbar in the PowerBuilder IDE which automatically loads each time PowerBuilder is opened.

2.5.2 Appeon Server

Appeon Server is a set of J2EE, CORBA and PowerBuilder server components that provide runtime services such as data connectivity, DataWindows support, n-Tier component support, transaction management, printing and security for Appeon Web applications.

Appeon Server also includes Appeon Enterprise Manager (AEM) and the Appeon Server Web Component.

AEM is a Web application used to manage Appeon Server and deployed Web applications over the Internet or intranet. When you install Appeon Server, AEM is automatically installed to WebLogic.

Appeon Server Status Monitor backs up Appeon Server session information, monitors whether Appeon Server is in “started” status, and automatically restarts Appeon Server and recovers the runtime information when it detects Appeon Server has shut down.

During the Appeon Server installation, the Appeon Server Web Component is copied to the WebLogic HTTP server. If you are using one WebLogic server as both the Web server and the application server, you will NOT need to run the Appeon Server Web Component installation.

2.5.3 Appeon Server Web Component (for third-party Web servers)

Appeon Server Web Component resides in a Web server as the runtime environment supporting a PowerBuilder-style Web graphical user interface within standard Microsoft Web browsers. The Appeon Server Web Component is a set of JavaScript, HTML and XML files that enable the rich PowerBuilder-style UI in standard Microsoft Web browsers.

If you use a third-party Web server, physically separate the Web server and the application server and install the Appeon Server Web Component to the third-party Web server. The

Appeon Server Web Component will be installed to the Web root of the Web server. You are also required to configure the Web server with the WebLogic redirector plug-in. For detailed instructions, refer to the *Web Server Configuration Guide* in Appeon Help.

2.5.4 Appeon Help

Appeon Help provides easy access to all user documents. It saves time and conveniently places the help information, such as, the Appeon supported features, at your fingertips.

3 Installation Requirements

3.1 Client requirements

3.1.1 Software requirements

- Microsoft Internet Explorer 6.0 SP2, 7.0, or 8.0
- Microsoft Windows 2000 SP4, Windows Server 2003 SP2, Windows Server 2008 SP1, Windows XP SP3, or Windows Vista SP1

To run Apeon Web Application under Windows Vista, you need to previously configure the Internet Explorer security setting properly. Refer to [Additional Configuration of IE 7 under Windows Vista](#) for more information.

3.1.2 Hardware requirements

- A Pentium-class processor running at 1 GHz or faster
- At least 512 MB RAM

3.2 Apeon Server requirements

3.2.1 Software requirements

- Windows OS that is supported by Oracle WebLogic
- Oracle® WebLogic Server 8.1.6, 9.2, or 10.3

3.2.2 Hardware requirements

- Pentium-class processor(s) running at 2 GHz or faster
- 1 GB RAM
- 680 MB hard drive space (for WebLogic installation) plus 250 MB hard drive space (for Apeon Server installation)
- DVD-ROM drive (for Apeon installation from DVD)

3.2.3 (Optional) Third-party Web server

- Apache 1.3 or 2.0, or Microsoft IIS 5.0 or 6.0
If you use IIS 6.0 as the Web server, the only compatible operating system is Windows Server 2003. IIS 6.0 does not work in other operating systems.
- 5 MB available hard drive space (for Apeon Server Web Component installation)

To make the third-party Web server work with Apeon Server, you must have the Web server redirector plug-in installed and configured. For detailed instructions, refer to the *Web Server Configuration Guide* in Apeon Help.

3.3 Apeon Developer requirements

3.3.1 Software requirements

- Microsoft Internet Explorer 6.0 SP2, 7.0, or 8.0
- Microsoft Windows 2000 SP4, Windows Server 2003 SP2, Windows Server 2008 SP1, Windows XP SP3, or Windows Vista SP1
- Sybase PowerBuilder® 8.0.4, 9.0.3, 10.2.1, 10.5.2, 11, 11.2, or 11.5

If you do not have the required build, update it by running the PowerBuilder EBF program provided on the Apeon Installation DVD or downloaded from the Sybase Downloads website.

- Microsoft Internet Explorer 6.0 SP1, 6.0 SP2, or 7.0.
- ODBC database driver or a native database driver for the database server used by your application. Note that you cannot use a native database driver for Sybase ASA 7/8/9/10/11 or an IBM DB2 database.
- (Optional) Sybase Adaptive Server® Anywhere 7.0.4, 8.0.2, 9.0, 10.0, or 11.0 (for running the PowerBuilder demos included in Apeon installation)

3.3.2 Hardware requirements

- A Pentium-class processor running at 1.8 GHz or faster
- At least 512 MB RAM (1 GB RAM recommended)
- 250 MB available hard drive space (for Apeon Developer installation only).

Each PowerBuilder application conversion project will require additional hard drive space based on the size of the PowerBuilder application.

- DVD-ROM drive (for Apeon installation from DVD)

3.4 Database server requirements

Apeon 6.2 for PowerBuilder can run with any of the following database servers and their drivers:

- Sybase Adaptive Server Anywhere 7.0.4, 8.0.2, 9.0, 10.0, or 11.0 with Sybase iAnywhere or jConnect JDBC driver
- Sybase Adaptive Server Enterprise (ASE) 12.5.x or 15.x with Sybase jConnect or iAnywhere JDBC driver
- Sybase Adaptive Server Anywhere WEB Edition with Sybase jConnect or iAnywhere JDBC driver
- Sybase IQ 12.7.x with jConnect JDBC driver
- Oracle 8i, 9i, 10g, or 11g with Oracle JDBC driver

Download the Oracle JDBC driver from the Oracle Web site (http://www.oracle.com/technology/software/tech/java/sqlj_jdbc/index.html).

Note: Verify that the version of the downloaded driver is compatible with the Oracle database in use.

- Microsoft SQL Server 2000 SP4, 2005 SP1, or 2008 with MSFT JDBC driver or JTDS driver

Download the latest version of the Microsoft SQL Server JDBC driver from the Microsoft Web site

(<http://www.microsoft.com/downloads/details.aspx?FamilyID=C47053EB-3B64-4794-950D-81E1EC91C1BA&displaylang=en#AffinityDownloads>).

- IBM DB2 UDB 8.1, 8.2, or 9.5 with IBM JDBC driver
- Informix 7.x, 8.x, 9.x, or 10.x with IBM JDBC driver

Copy the corresponding driver files for the database server in use to the %WL_HOME%\server\lib folder on the machine hosting Apeon Server. %WL_HOME% indicates the WebLogic installation path, for example, C:\bea\weblogic81. Refer to the *JDBC driver preparation* section in the *Apeon Server Configuration Guide* for more information.

4 Installing Appeon 6.2

4.1 Overview

Appeon for PowerBuilder for WebLogic Windows consists of the following four components.

Table 4-1: Appeon components

Component	Description	Installed on
Appeon Developer	An add-in that provides the Web deployment option to PowerBuilder.	PowerBuilder running on Windows 2000, 2003, 2008, XP, or Vista.
Appeon Server	A set of PowerBuilder server components that provide runtime services for the Appeon Web applications, such as data connectivity, DataWindows support, transaction management, printing and security. Appeon Server also includes Appeon Enterprise Manager (AEM) and Appeon Server Web Component.	WebLogic running on Windows 2000, 2003, 2008, XP, or Vista.
Appeon Server Web Component	The runtime environment that supports a PowerBuilder-style Web graphical user interface within standard Microsoft Web browsers. Appeon Server Web Component is a library of JavaScript, HTML and XML files that form the foundation of the/an Appeon Web application.	Third-party Web server (For WebLogic HTTP server, this installation is unnecessary since the Web Component is included in Appeon Server.)
Appeon Help	The online help of all Appeon user documents which saves time and conveniently places the help information at your fingertips.	Windows 2000, 2003, 2008, XP, or Vista.

4.2 Installation scenarios

4.2.1 Overview

Appeon for PowerBuilder works in network architecture – different Appeon components should be installed to the computer(s) according to their roles in the network. In this section, some practical scenarios are described to demonstrate how Appeon should be installed according to network architecture.

4.2.2 Developer PC

Table 4-2: Developer PC installation

Scenarios	Requirements	Appeon Components
One physical machine, Computer 1, serves as IDE, Web server, application server and database server	Computer 1: Microsoft Windows 2000, 2003, 2008, XP, or Vista Microsoft Internet Explorer Sybase PowerBuilder Oracle WebLogic Sybase ASA (Optional) Sybase ASE, Sybase IQ, Oracle, Microsoft SQL Server, Informix or IBM DB2 depending on application database	Computer 1: Appeon Developer Appeon Server

4.2.3 Remote Appeon Server using WebLogic HTTP server

Table 4-3: Remote Appeon Server installation

Scenarios	Requirements	Appeon Components
In this example, 2 computers are used: Computer 1 serves as Developer PC;	Computer 1: Microsoft Windows 2000, 2003, 2008, XP, or Vista Microsoft Internet Explorer Sybase PowerBuilder Sybase ASA	Computer 1: Appeon Developer
Computer 2 serves as Web server, application server and database server.	Computer 2: Microsoft Windows 2000, 2003, 2008, XP, or Vista Oracle WebLogic Sybase ASA, Sybase ASE, Sybase IQ, Oracle, Microsoft SQL Server, Informix or IBM DB2 depending on application database	Computer 2: Appeon Server

4.2.4 Remote Appeon Server using a third-party Web server

Table 4-4: Remote Appeon Server installation

Scenarios	Requirements	Appeon Components
In this example, 3 computers are used: Computer 1 serves as Developer PC;	Computer 1: Microsoft Windows 2000, 2003, 2008, XP, or Vista Microsoft Internet Explorer Sybase PowerBuilder Sybase ASA	Computer 1: Appeon Developer

Computer 2 serves as Web server;	Computer 2: Microsoft IIS or Apache	Computer 2: Appeon Server Web Component
Computer 3 serves as application server and database server.	Computer 3: Microsoft Windows 2000, 2003, 2008, XP, or Vista Oracle WebLogic Sybase ASA, Sybase ASE, Sybase IQ, Oracle, Microsoft SQL Server, Informix or IBM DB2 depending on application database	Computer 3: Appeon Server

4.2.5 Appeon Server Cluster

Table 4-5: Appeon Server cluster installation

Scenarios	Requirements	Appeon Components
In this example, N (N \geq 4) computers are used: Computer 1 is used for Developer PC;	Computer 1: Microsoft Windows 2000, 2003, 2008, XP, or Vista Microsoft Internet Explorer Sybase PowerBuilder Sybase ASA	Computer 1: Appeon Developer
Computer 2 is used for Web server.	Computer 2: Microsoft IIS or Apache	Computer 2: Appeon Server Web Component
Computer 3 is the database server.	Computer 3: Sybase ASA, Sybase ASE, Sybase IQ, Oracle, Microsoft SQL Server, Informix or IBM DB2 depending on application database	Computer 3: None
Computers 4 to n are a group of WebLogic servers.	Computers 4 to n: Microsoft Windows 2000, 2003, 2008, XP, or Vista Oracle WebLogic	Computers 4 to n: Appeon Server (After installing Appeon Server to each WebLogic, configure the Appeon Servers as a cluster. Refer to 5: Configuring Appeon Server Cluster for details)

4.3 Appeon 6.2 installation

Appeon 6.2 for PowerBuilder for Windows WebLogic provides only new installation, and provides no upgrade installation. If your computer has Appeon 5.x or an earlier version

installed, you must uninstall the version, prepare the environment for Appeon 6.2 installation, and then use the installation program to install.

4.3.1 Starting the installation

Step 1 – Double click the Setup.exe file in the installation package. The entry page has several options to guide you through the various installation tasks.

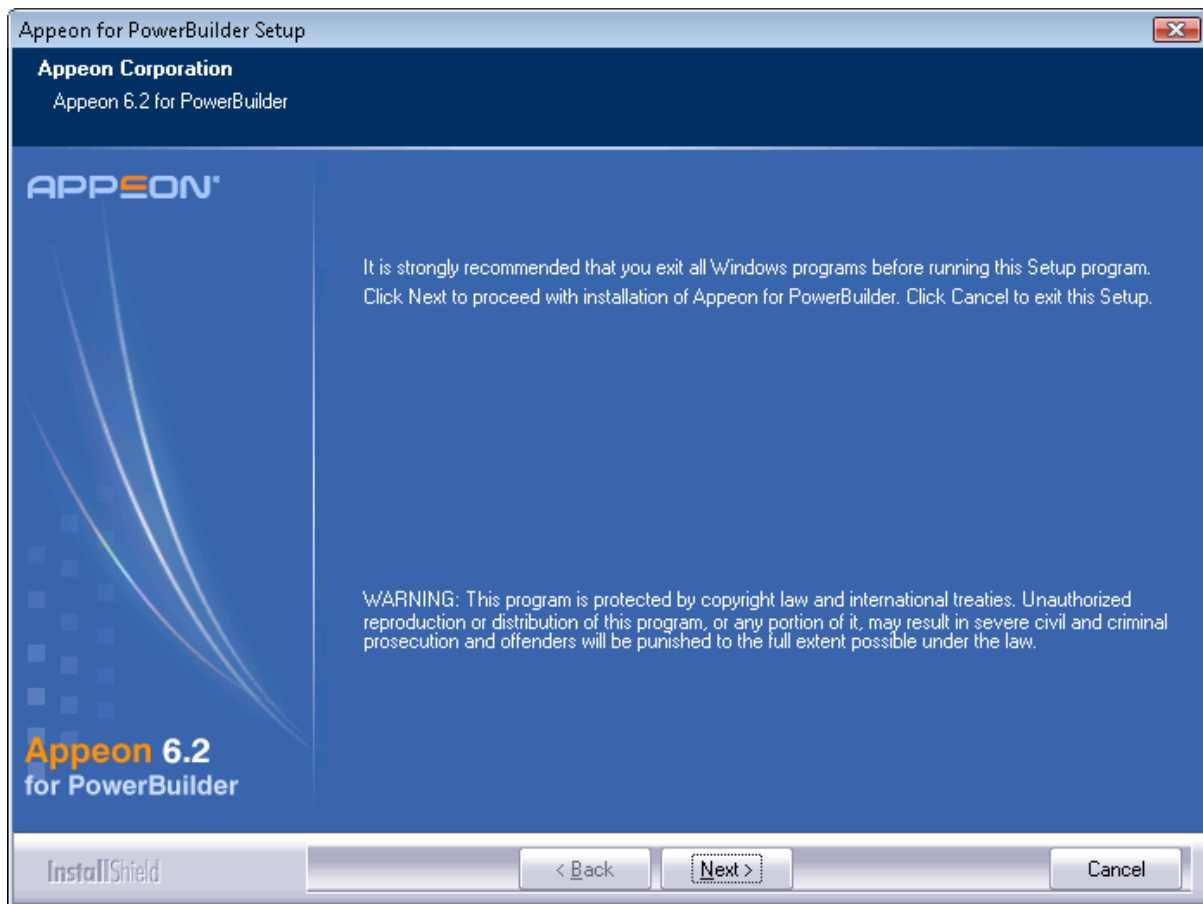
- **Install Now:** Click this option to start installing the product.
- **Readme for Installation:** Click this option to read the key system requirements and installation information for this version.
- **Install Appeon PDF Printer:** Click this option to start installing PDF printer. Since PDF printing is unsupported for WebLogic, you do not need to install the PDF printer.
- **Exit:** Click this option to exit the Setup program. **View Readme for Installation:** Click this link to read the key system requirements and installation information for this version.

Note: Make sure there is enough space on the C: drive for storing temporary files for installation. Otherwise an error message will pop up, saying “1607: Unable to install InstallShield Scripting Runtime.”

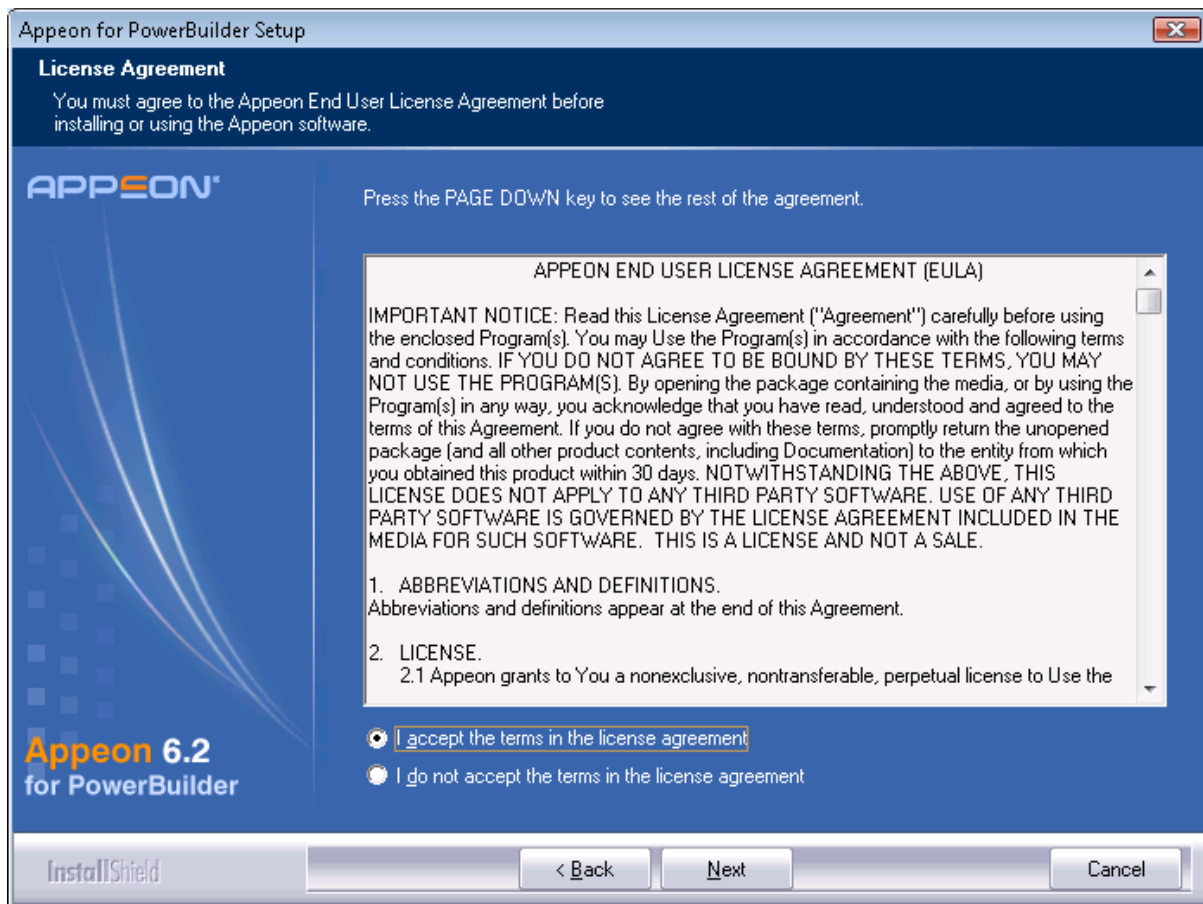
Step 2 – Click *Install Now*.

Figure 4-1: Install Appeon for PowerBuilder

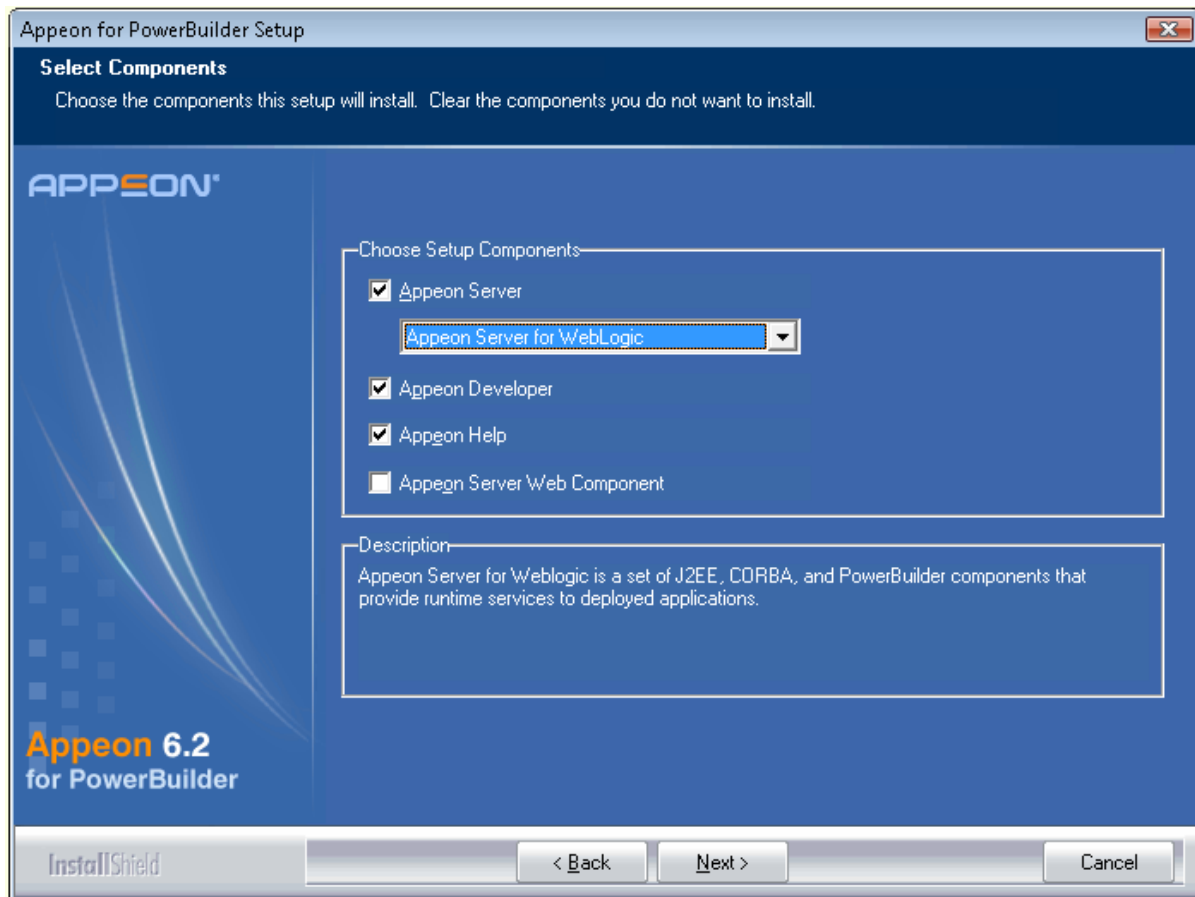
Step 3 – Click *Next* on the Appeon for PowerBuilder introduction screen (Figure 4-2).

Figure 4-2: Introduction page

Step 4 – Accept the terms in the license agreement page and click *Next* (Figure 4-3).

Figure 4-3: License agreement page

Step 5 – Select the component(s) you want to install and click *Next* (Figure 4-4). The Setup program will install the selected component(s) in the order listed.

Figure 4-4: Appeon for PowerBuilder introduction screen

Refer to the following sections to complete the installation of each component.

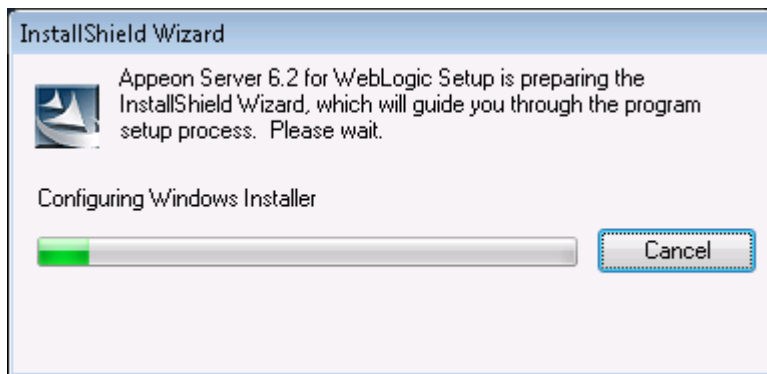
- For Appeon Server installation instructions, refer to [Appeon Server installation](#).
- For Appeon Developer installation instructions, refer to [Appeon Developer installation](#).
- For Appeon Server Web Component installation instructions, refer to [Appeon Server Web Component installation](#).
- For Appeon Help installation instructions, refer to [Appeon Help installation](#).

4.3.2 Appeon Server installation

Follow the instructions below to install Appeon Server to the WebLogic server:

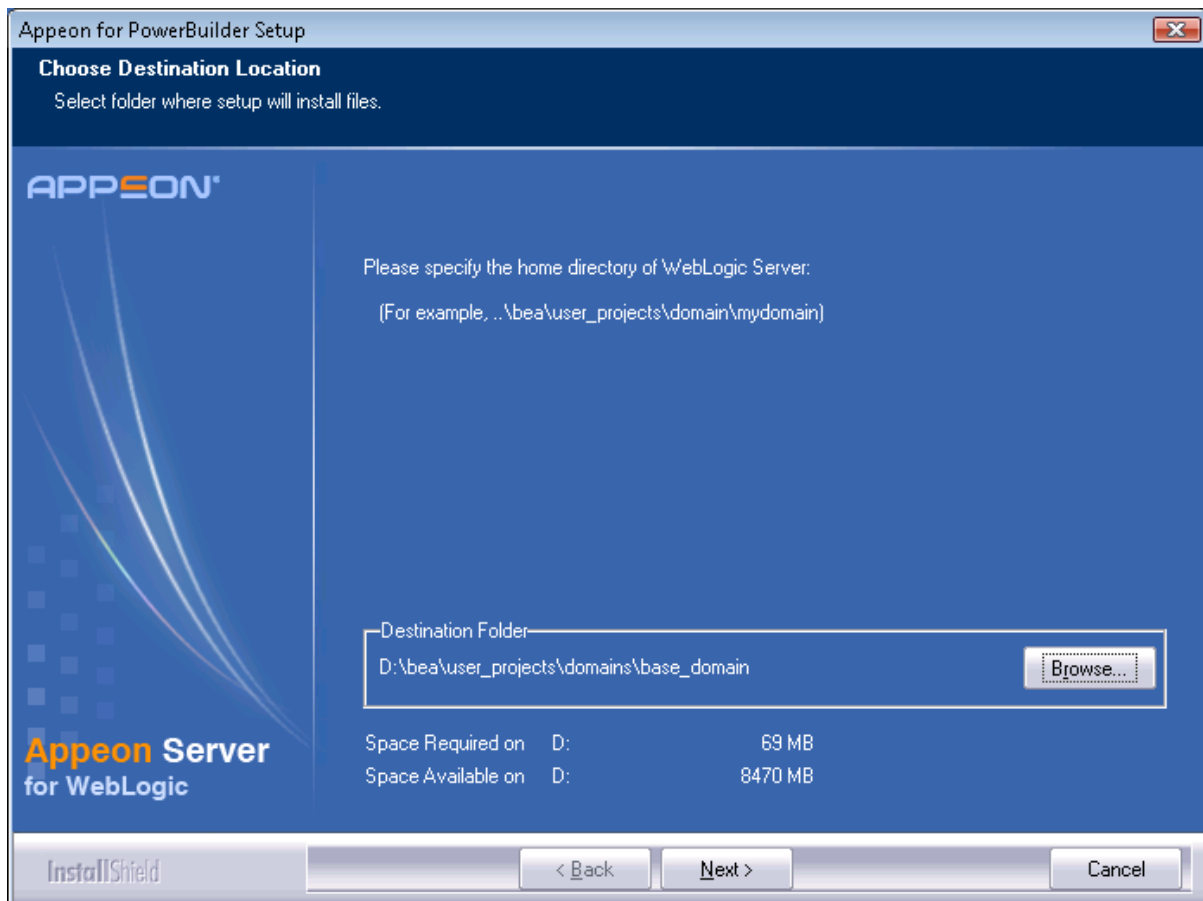
Step 1 – Verify that WebLogic server, as well as any other programs you may be running, is closed.

Step 2 – Launch the Appeon for PowerBuilder Setup program and select to install **Appeon Server for WebLogic** (see [Starting the installation](#) section). Wait until Appeon Server completes the preparation (Figure 4-5).

Figure 4-5: Apeon Server preparing to install

Step 3 – Click *Browse* to specify a domain path of the WebLogic server where Apeon Server will be installed, for example, C:\bea\user_projects\domains\mydomain. Click *Next* (Figure 4-6).

For instructions on how to configure a domain, refer to the ORACLE WebLogic online document on <http://e-docs.bea.com/wls/docs81/adminguide/>.

Figure 4-6: Specify installation directory

Step 4 – Specify the user name and password for Apeon Enterprise Manager (AEM).

Figure 4-7: Configure Appeon Server

Appeon for PowerBuilder Setup

Specify the AEM login Username and Password
Enter the username and password for Appeon Enterprise Manager.

APPEON

The default user name and password for AEM are "admin". Appeon recommends you to change the default values.

Username:

Password:

Confirm Password:

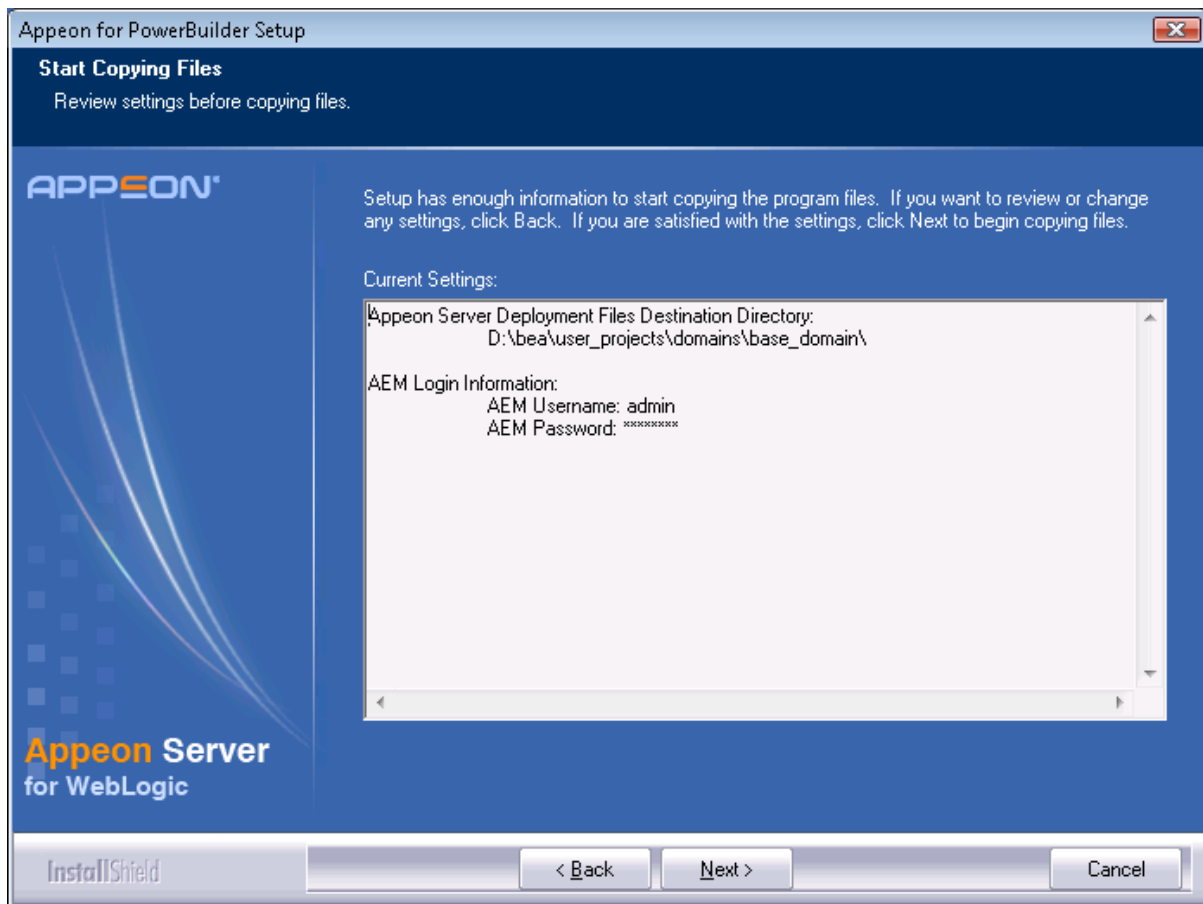
Appeon Server
for WebLogic

InstallShield

< Back Next > Cancel

Step 5 – Check the summary of settings (Figure 4-8).

Click *Back* to change any unwanted settings or click *Next* to have Setup begin copying files.

Figure 4-8: Summary of settings

At the click of the *Next* button, the installation program begins copying files to your computer, as shown in Figure 4-9.

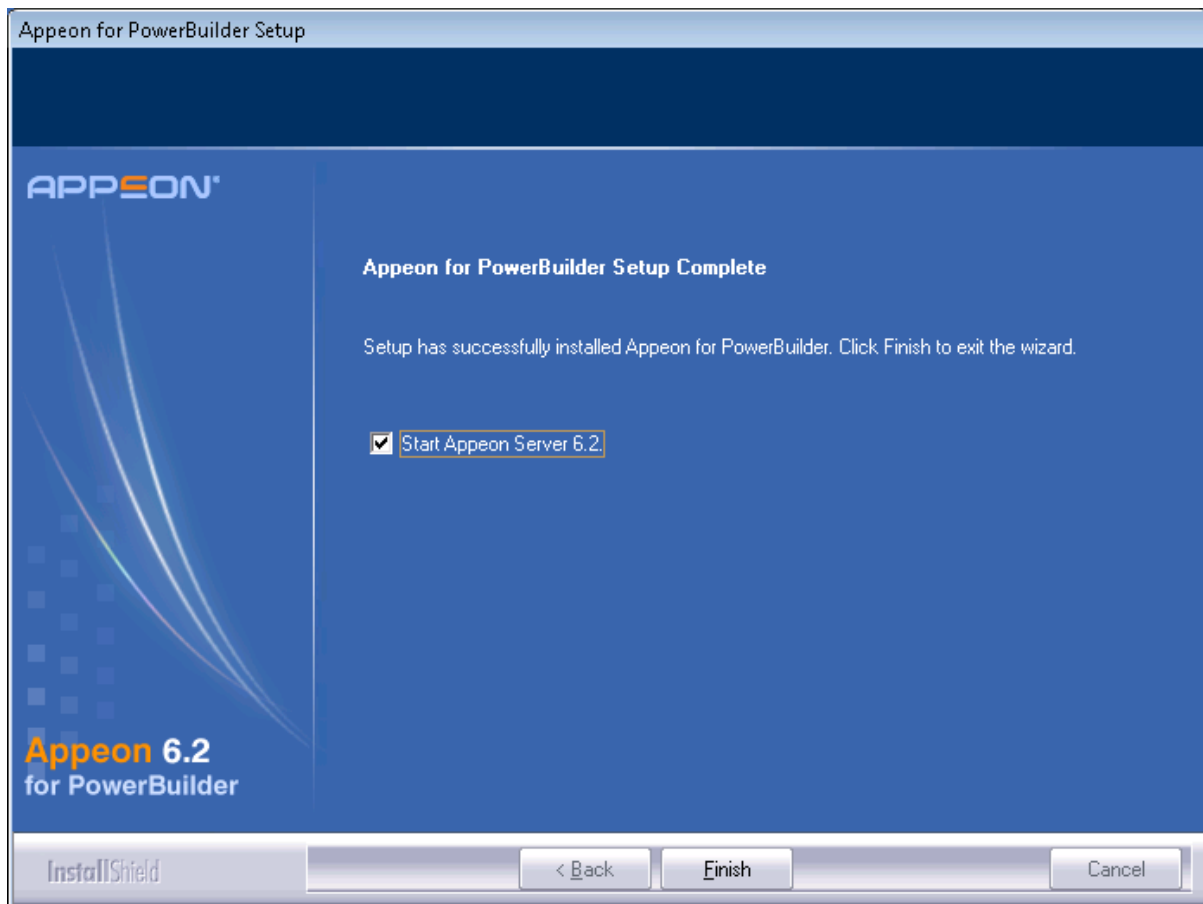
Figure 4-9: Appeon Server installation process

Step 6 – Wait until Appeon Server installation is completed.

An Appeon Server EAR package (appeonserver.ear) has been successfully installed to the specified WebLogic server domain.

Step 8 – Choose whether to “*Start Appeon Server 6.2*” (Figure 4-10). It is selected by default. To manually start Appeon Server from the Windows shortcut later, uncheck the box. Click *Finish* to end the installation of Appeon Server.

For details about starting Appeon Server, refer to Section 4.4.2: [Starting Appeon Server](#).

Figure 4-10: Appeon Server finish page

4.3.2.1 Deploying appeonserver.ear package manually (for WebLogic Production Mode only)

After installing Appeon Server to the domain path of the WebLogic server, you may need to deploy the Appeon Server EAR package (appeonserver.ear) in the WebLogic Server Administration Console if the WebLogic server runs in the Production mode.

Skip this section if WebLogic Server runs in the Development mode because WebLogic Server in Development mode includes an auto-deployment feature which can detect the Appeon Server EAR package (appeonserver.ear) and automatically deploy it. In this case, you can verify that Appeon Server was successfully installed and deployed by starting WebLogic server and inputting `http://localhost:7001/AEM` on the local machine to access Appeon Enterprise Manager (AEM).

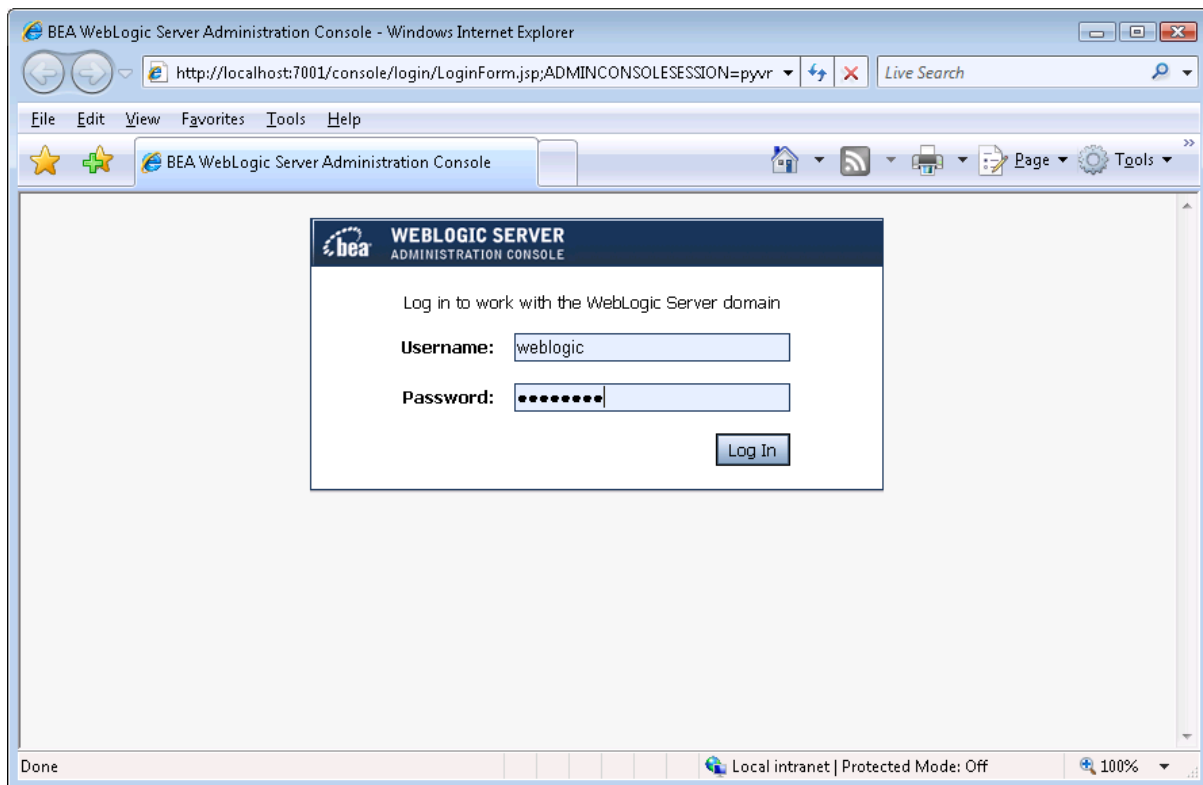
Follow the instructions below to deploy the `appeonserver.ear` package if WebLogic server runs in the Production mode.

Step 1 – Start WebLogic server. Go to Programs | Appeon 6.2 for PowerBuilder | Appeon Server for WebLogic | Start WebLogic. For details on starting WebLogic server, refer Section 4.4.2: [Starting Appeon Server](#).

Step 2 – Access WebLogic Server Administration Console. Go to Programs | Appeon 6.2 for PowerBuilder | Appeon Server for WebLogic | WebLogic Manager.

The WebLogic Login window will appear (See Figure 4-11).

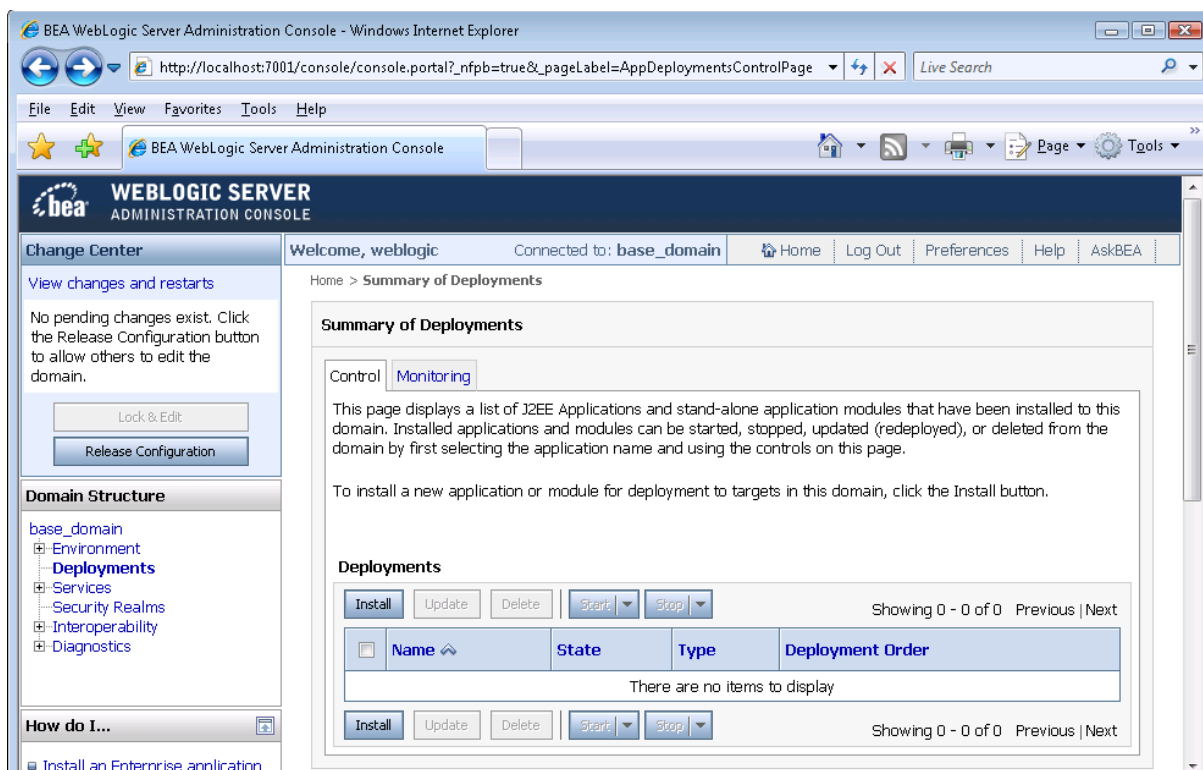
Figure 4-11: Login page



Step 3 – Log in to the WebLogic console with the correct username and password. The WebLogic Welcome Page appears.

Step 4 – Click the *Deployments* node and then click *Lock & Edit* in the left pane, and then click *Install* in the right pane (See Figure 4-12).

Figure 4-12: Deployment page

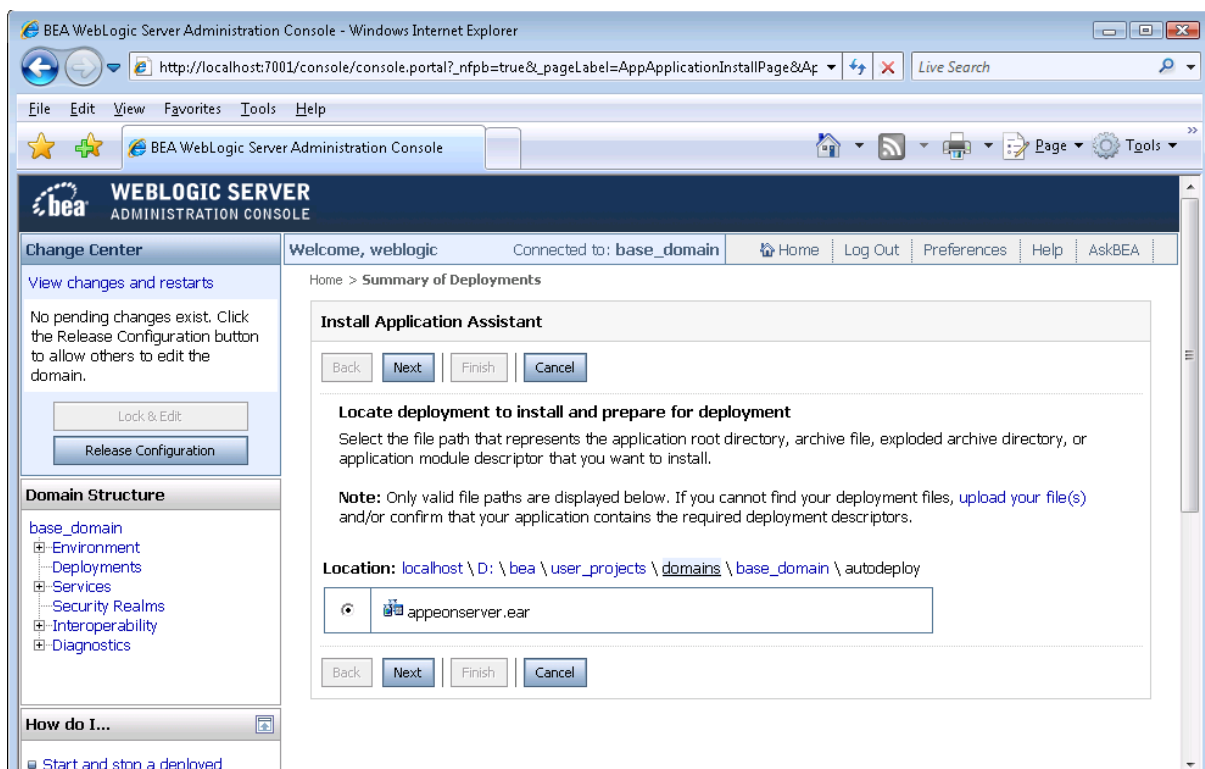


Step 5 – Specify an application folder you want to install the `appeonserver.ear` using Install Application Assistant in the Install Application Assistant page, and then click *Next* (See Figure 4-13).

The applications folder is where the Apeon Server EAR package (`appeonserver.ear`) should be placed when Apeon Server is installed to the WebLogic server domain.

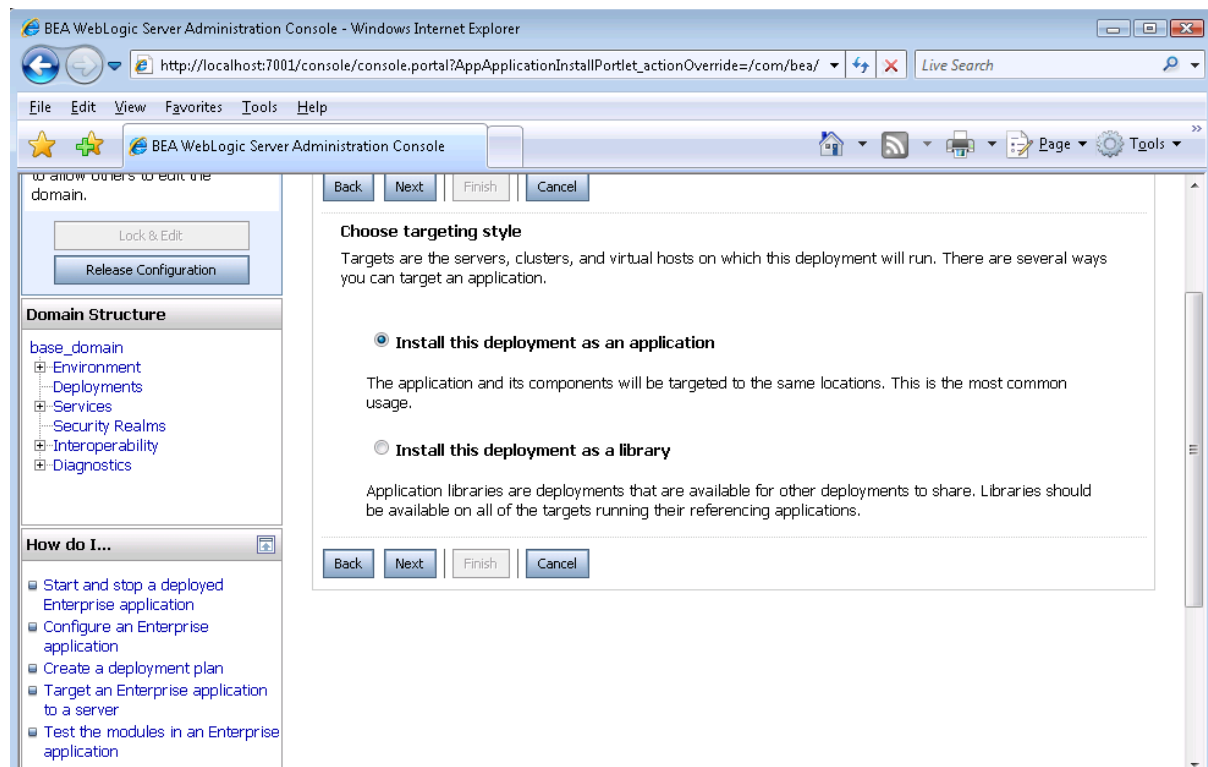
- If you are using WebLogic 8, the `appeonserver.ear` resides in `%BEA%\user_projects\domains\mydomain\applications`.
- If you are using WebLogic 9/10, the `appeonserver.ear` resides in `%BEA%\bea\user_projects\domains\mydomain\autodeploy`.

Figure 4-13: Specify the application folder

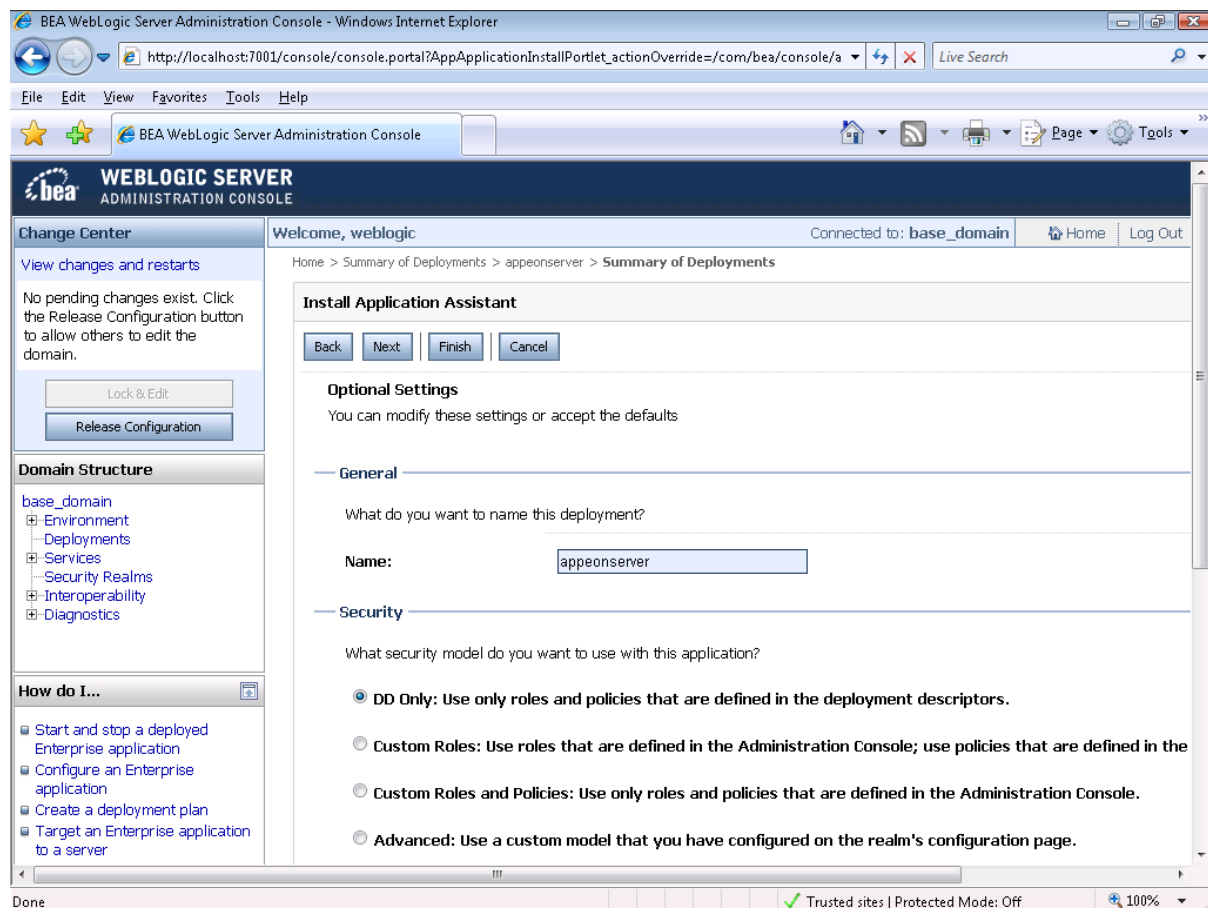


Step 6 – Select *Install this deployment as an application*. Click *Next* (See Figure 4-14).

Figure 4-14: Select the application

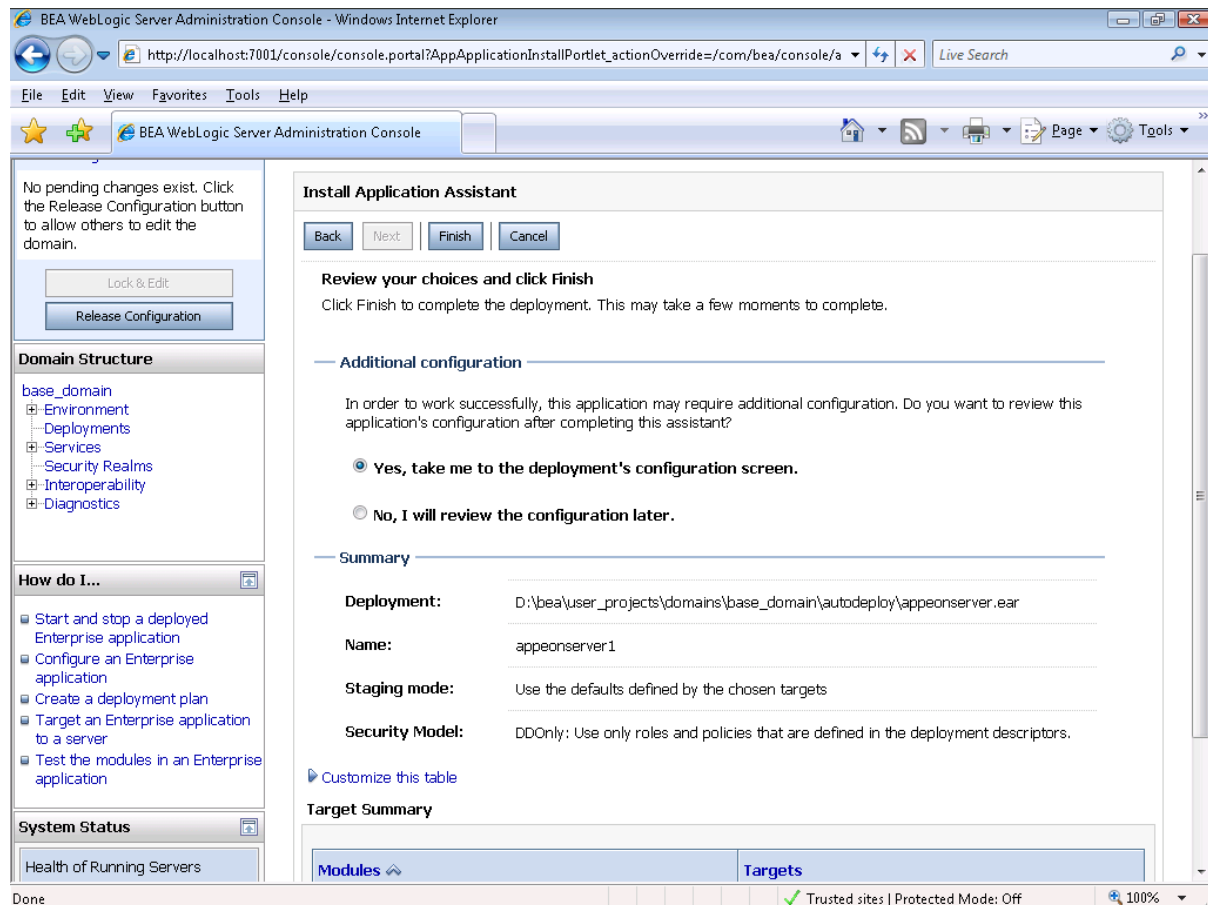


Step 7 – Use the default settings, and then click *Next* (See Figure 4-15).

Figure 4-15: Select `apeonserver.ear`

Step 8 – Review and check the summary of settings you have chosen, select *No, I will review the configuration later*, and then click *Finish*, the Deployment page appears with the installed `appeonserver.ear` being displayed in the Deployments table (See Figure 4-16).

Figure 4-16: Review settings and deploy



Step 9 – Click *Activate Changes* in the left pane to commit your pending changes to the server (See Figure 4-17).

Figure 4-17: Deployment status

The screenshot shows the BEA WebLogic Server Administration Console in a Windows Internet Explorer browser. The address bar shows the URL: `http://localhost:7001/console/console.portal?_nfpb=true&_pageLabel=AppDeploymentsControlPage`. The page title is "BEA WebLogic Server Administration Console".

At the top, there is a green button labeled "Activate Changes" and a blue button labeled "Undo All Changes". Below this is a "Domain Structure" tree on the left, with "Deployments" selected. Under "Deployments", there is a "How do I..." section with several links: "Install an Enterprise application", "Configure an Enterprise application", "Update (redeploy) an Enterprise application", "Start and stop a deployed Enterprise application", "Monitor the modules of an Enterprise application", "Deploy EJB modules", and "Install a Web application".

The main content area is titled "Summary of Deployments" and has two tabs: "Control" and "Monitoring". A green message at the top says: "You must also activate the pending changes to commit this, and other updates, to the active system." Below this, there is a text block explaining that the page displays a list of J2EE Applications and stand-alone application modules that have been installed to this domain. It also states that to install a new application or module, one should click the Install button.

The "Deployments" section contains a table with the following data:

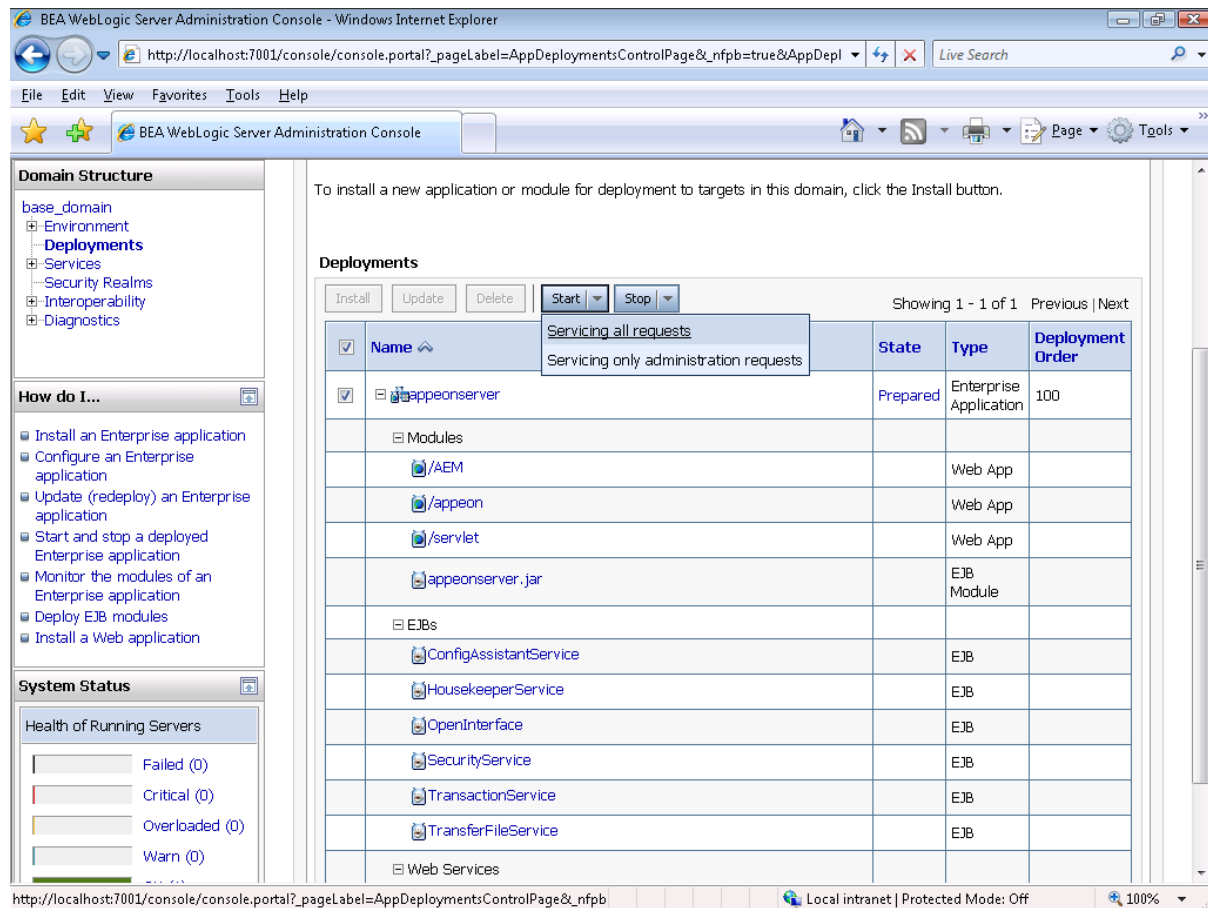
Name	State	Type	Deployment Order
apeonserver	distribute Initializing	Enterprise Application	100

Below the table, there are buttons for "Install", "Update", "Delete", "Start", and "Stop". The "Start" button is highlighted with a mouse cursor. The table also shows "Showing 1 - 1 of 1" and "Previous | Next" navigation options.

The status bar at the bottom of the browser shows "Done", "Local intranet | Protected Mode: Off", and "100%" zoom level.

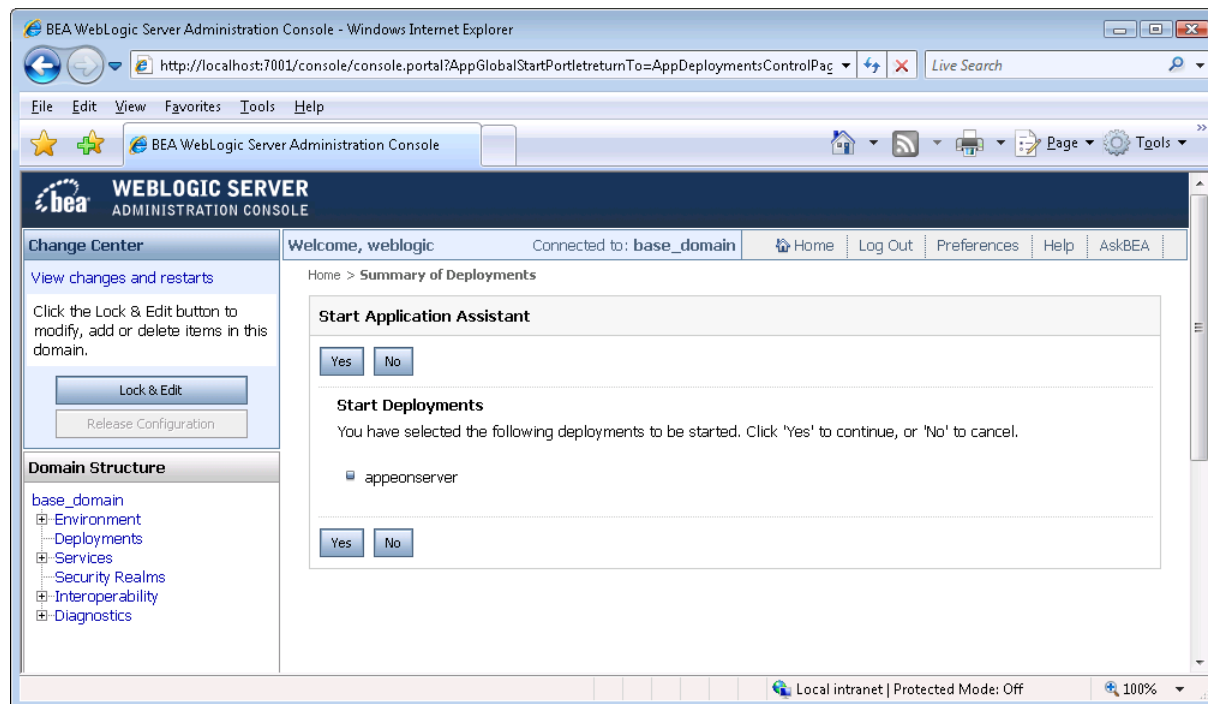
Step 10 – Click the Start | Servicing all requests to deploy the `apeonserver.ear` file (Figure 4-18).

Figure 4-18: Deployment the appeonserver.ear file



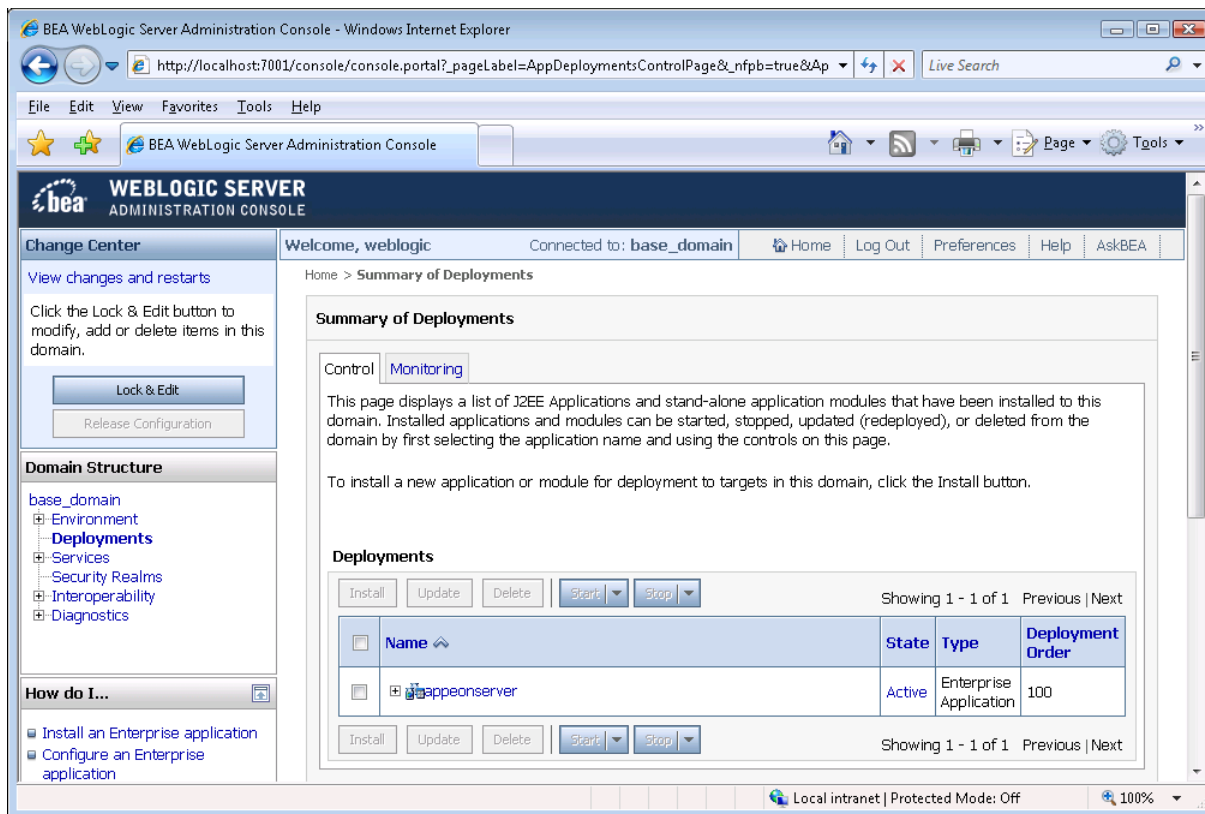
Step 11 – Click **Yes** in the Start Application Assistant window (Figure 4-19).

Figure 4-19: Start to Deploy the appeonserver.ear file



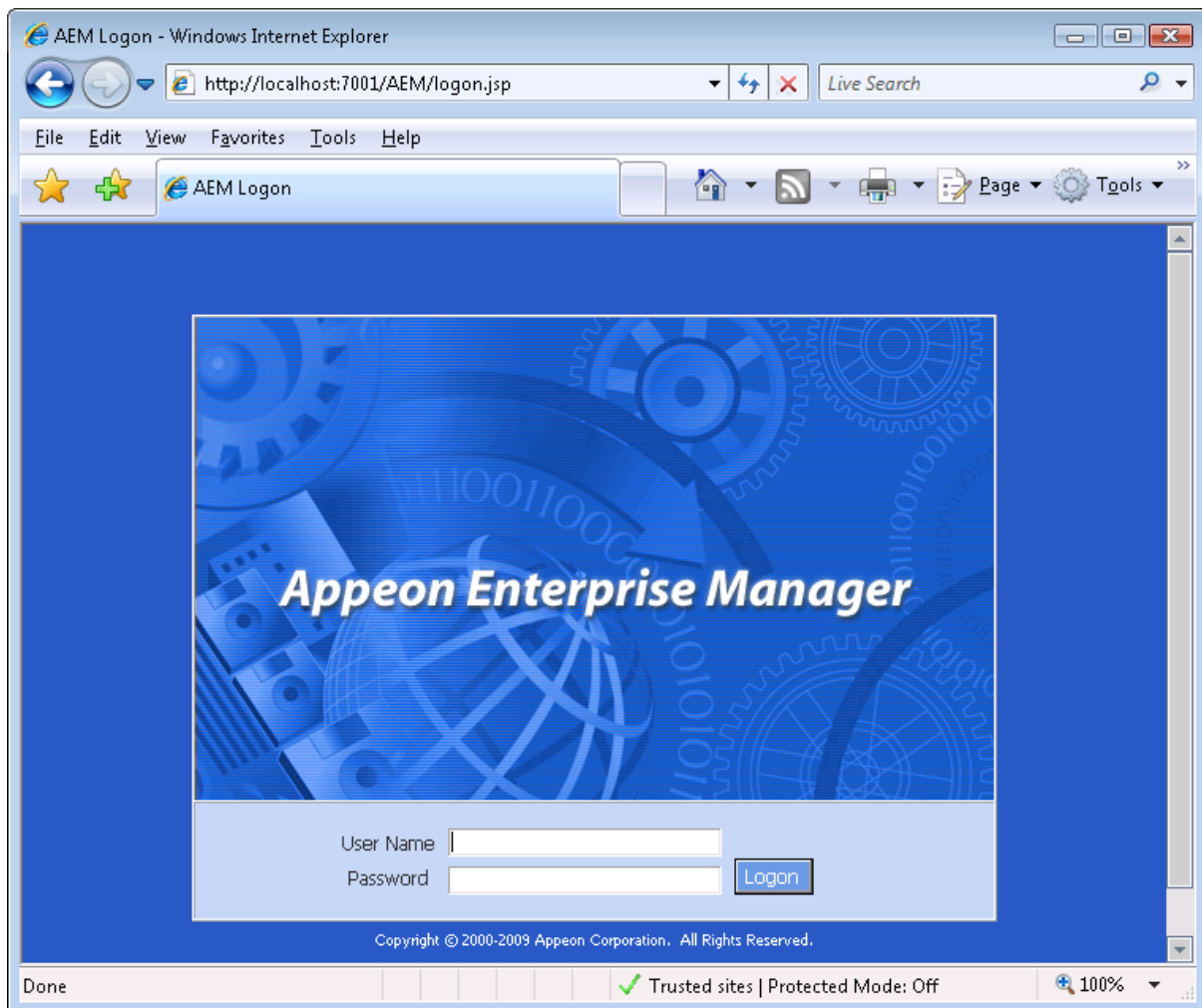
Wait until the `appeonserver.ear` is successfully deployed, and the State column shows *Active* (Figure 4-20).

Figure 4-20: Deployment status



Step 12 – Go to Programs | Appeon 6.2 for PowerBuilder | Appeon Server for WebLogic | Appeon Enterprise Manager on the local machine to access Appeon Enterprise Manager (AEM).

The successfully opened AEM logon window confirms that the deployment was successful (See Figure 4-21).

Figure 4-21: AEM login page

4.3.3 Appeon Developer installation

4.3.3.1 Prerequisites

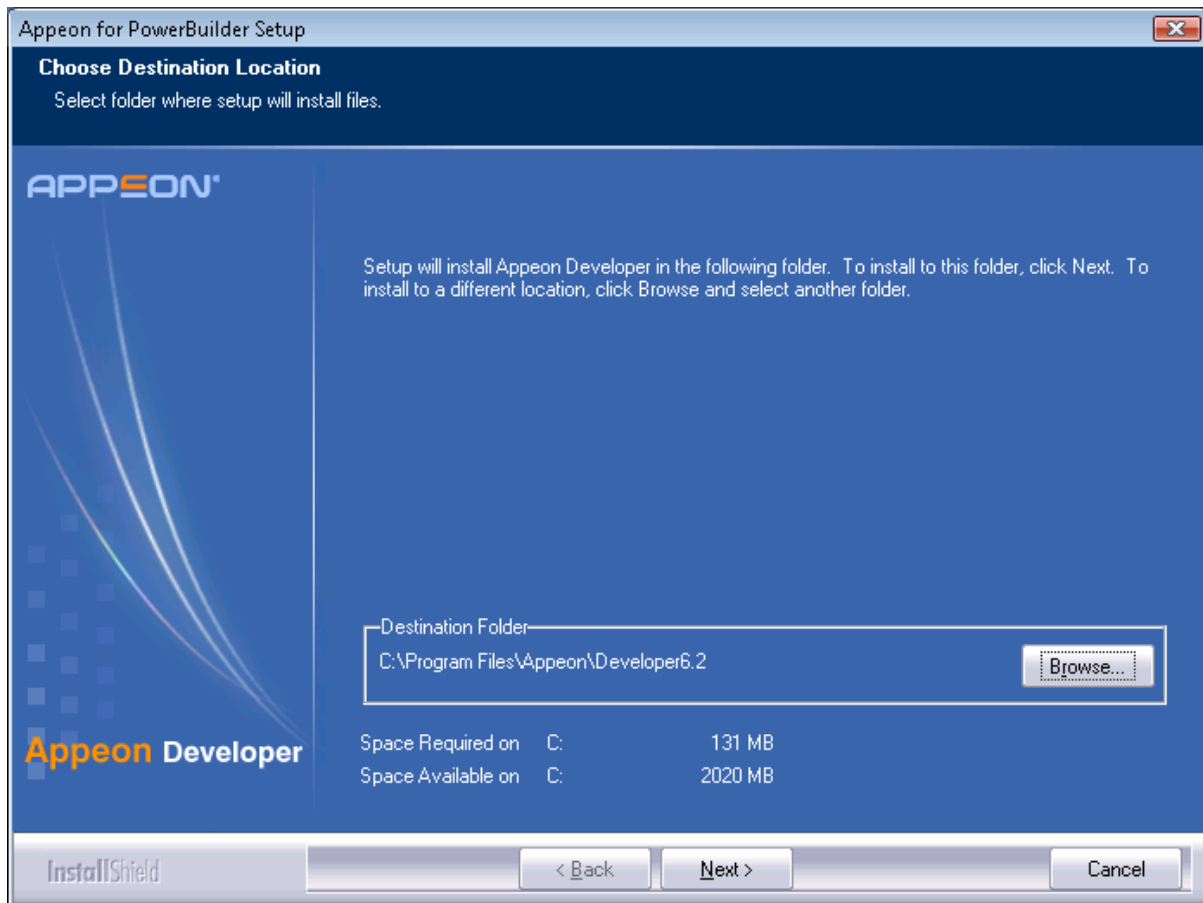
- The Developer PC meets the system requirements in Section 3.3: [Appeon Developer requirements](#). Verify that PowerBuilder 9.0.3, 10.5.2, 11.1, or 11.5 is installed or updated by running the PowerBuilder Setup program. You cannot install or update the software by copying files and folders from another source.
- Verify that PowerBuilder has been upgraded to the latest available build.
- Shut down Sybase PowerBuilder, Sybase ASA, Sybase Enterprise Portal Management Agent service and any other Windows programs before beginning the installation process.
- Verify in Windows Task Manager that the following processes are not running under the Process tab: *EonADT62.exe*, *java.exe*, *jagsrv.exe*, *jagsrvagent.exe*, *pb90.exe*, *pb100.exe*, *pb105.exe*, *pb110.exe*, and *pb115.exe*. If these processes are running, be sure to end them.

4.3.3.2 Installation instructions

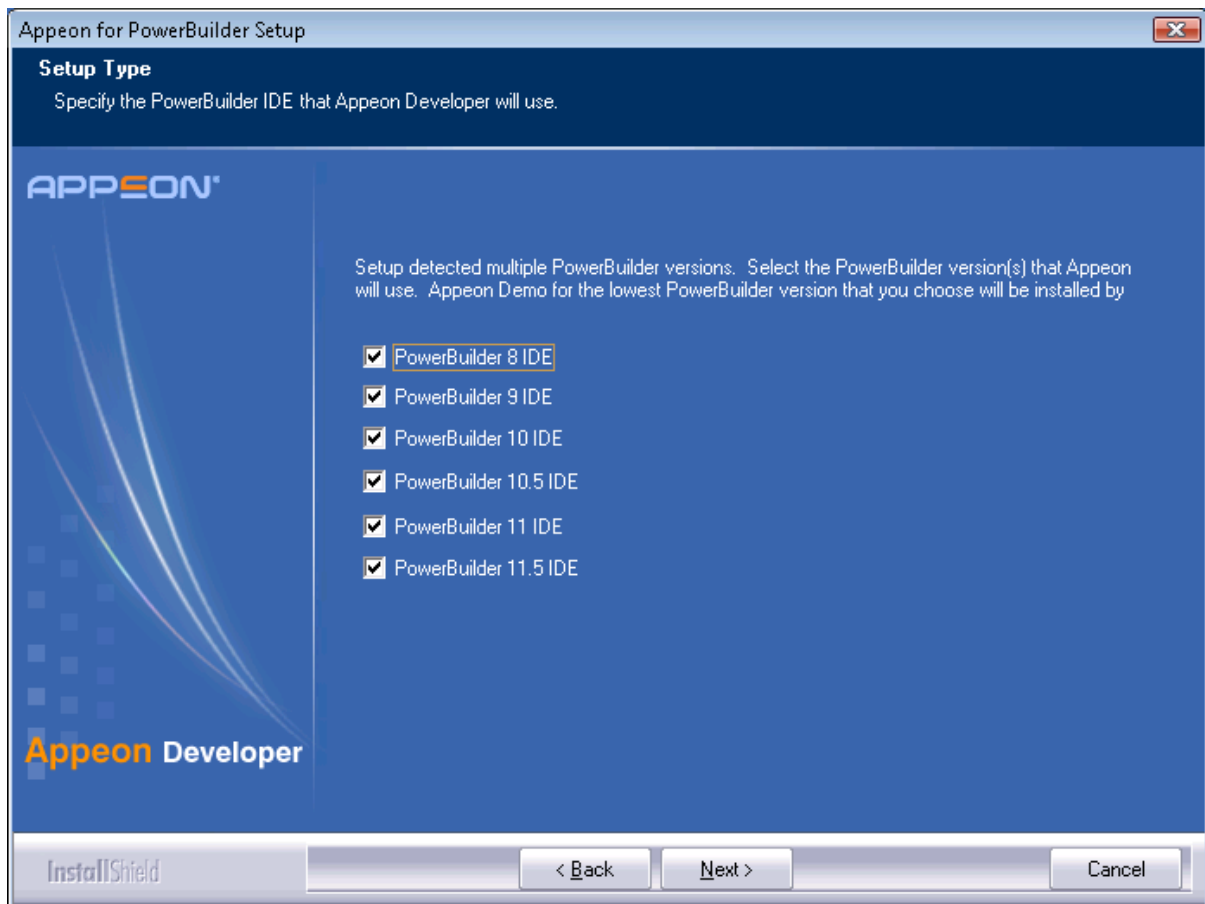
Step 1 – Launch the Appeon for PowerBuilder Setup program and select to install Appeon Developer (see [Starting the installation](#) section).

Step 2 – Click *Next* to install Appeon Developer to the default location, or click *Browse* to select another location (Figure 4-22).

Figure 4-22: Appeon Developer location

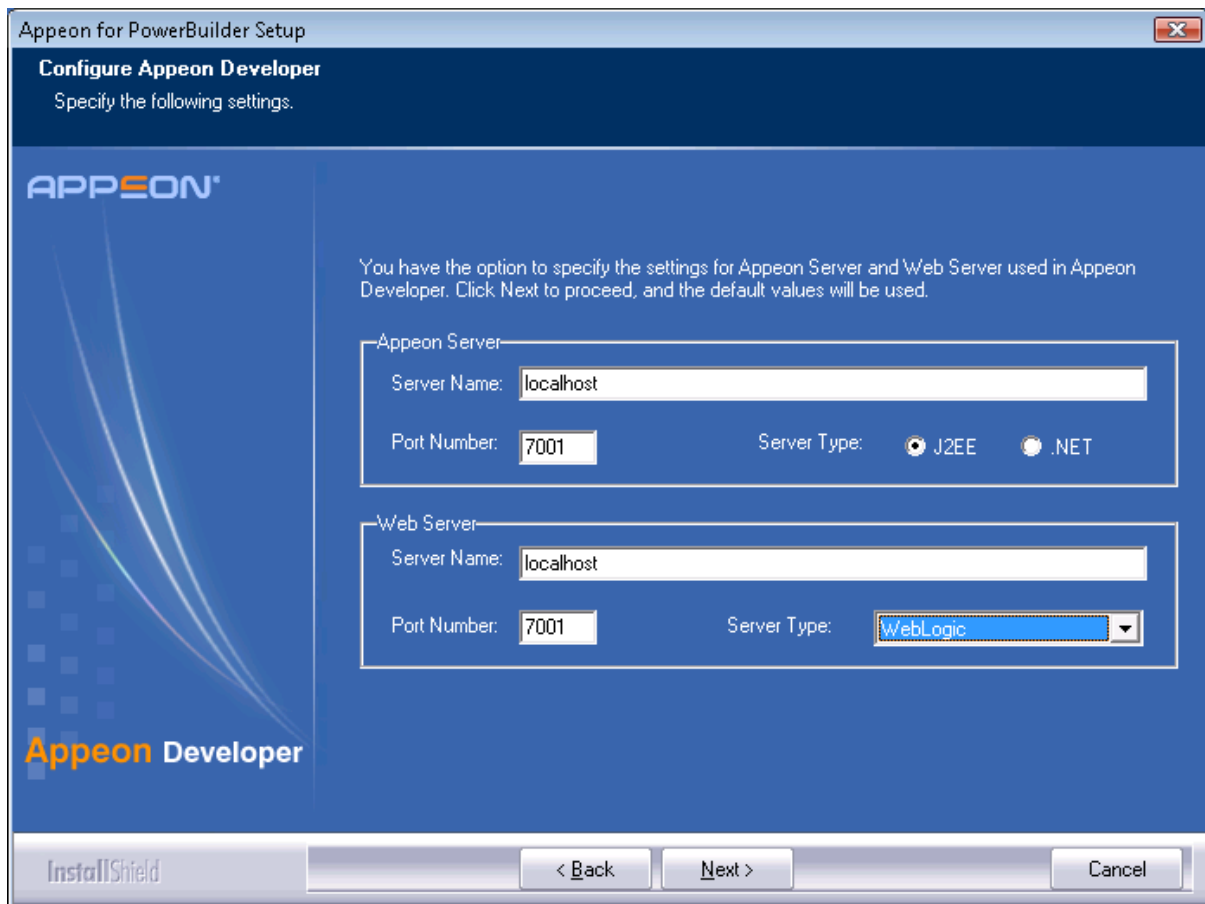


Step 3 – If you have more than one PowerBuilder installed, you will be given a choice of which version(s) to integrate into Appeon Developer (Figure 4-23).

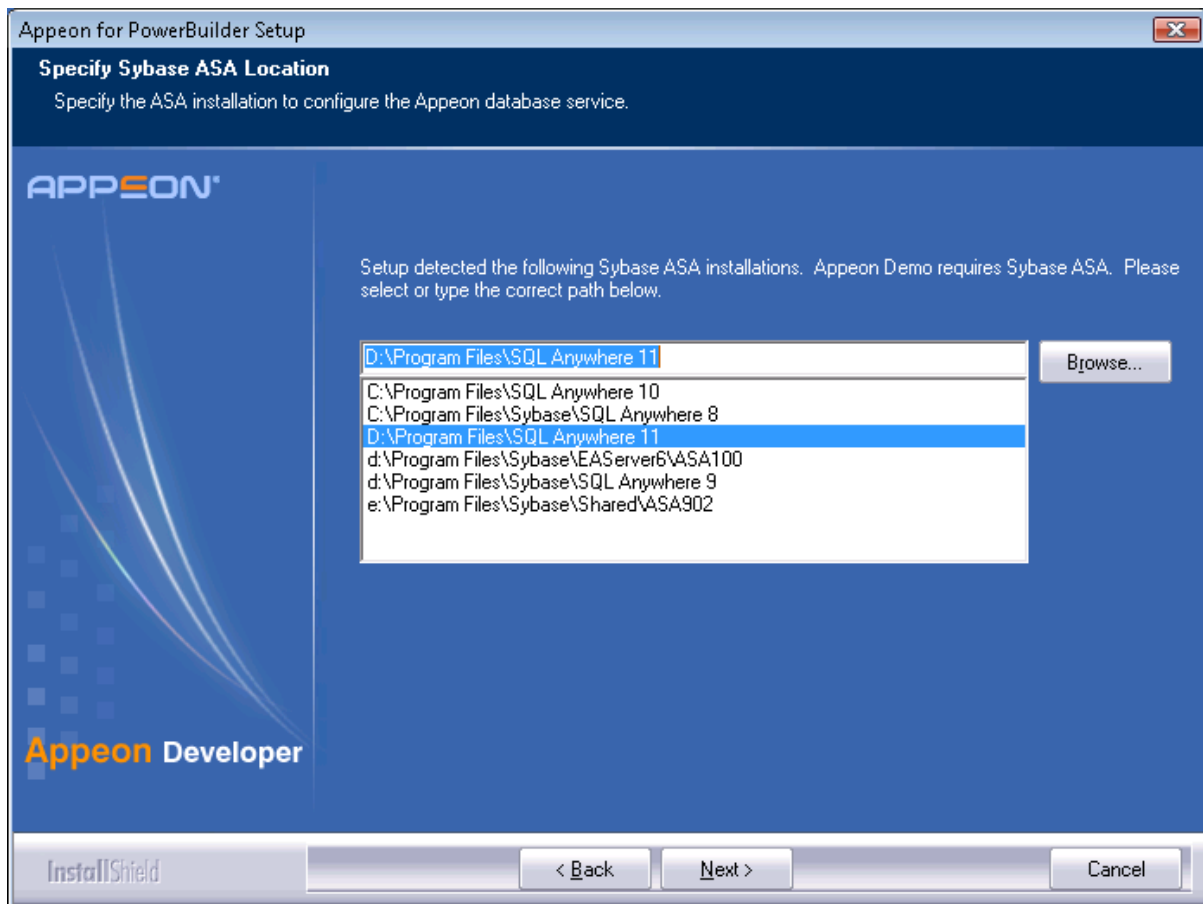
Figure 4-23: PowerBuilder IDE

Step 4 – Specify the server name and port number for Appeon Server and Web server used in Appeon Developer. Click *Next* (Figure 4-24).

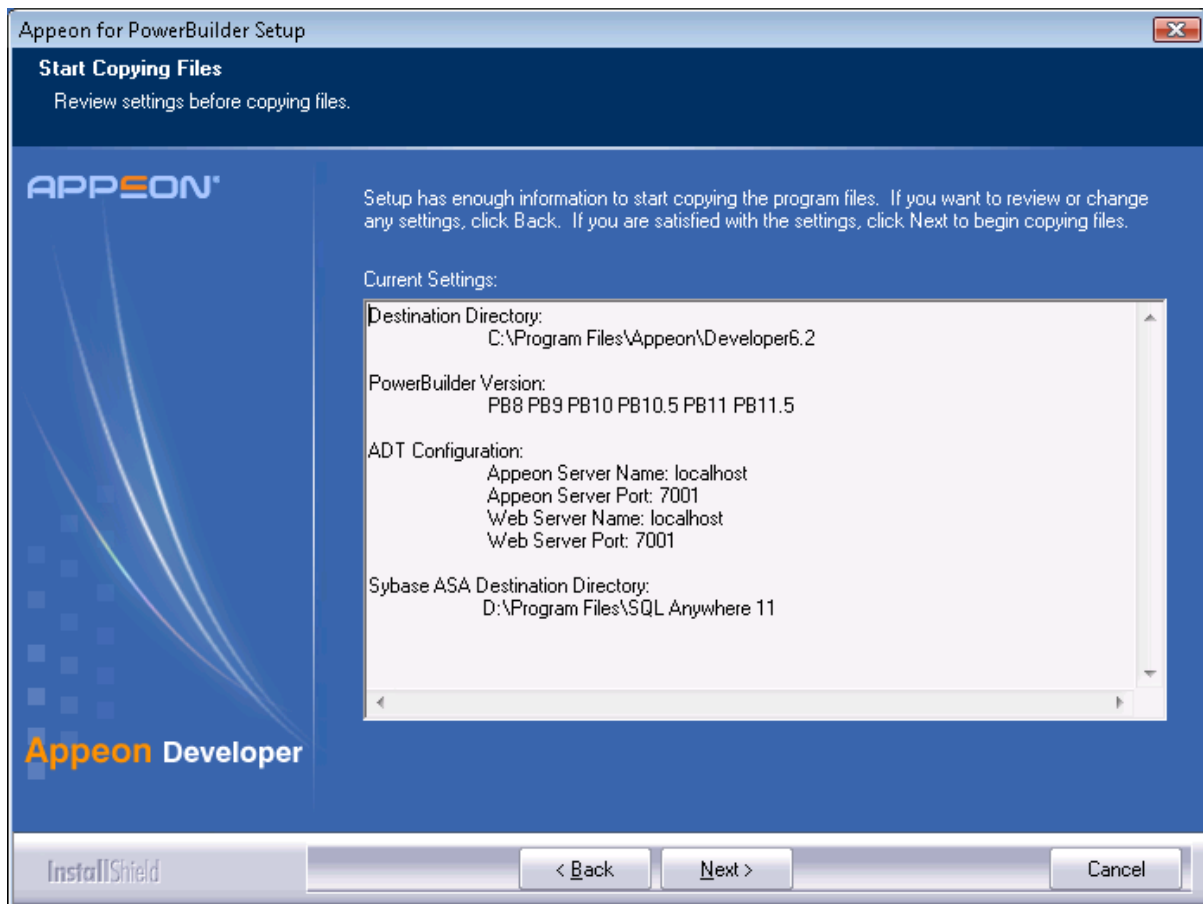
You can change these settings in the Configure tool of Appeon Developer after the installation when necessary.

Figure 4-24: Configure Appeon Developer

Step 5 – Select the ASA location for running Appeon Demos.

Figure 4-25: ASA for Apeon Demos

Step 6 – Check the summary of settings (Figure 4-26).

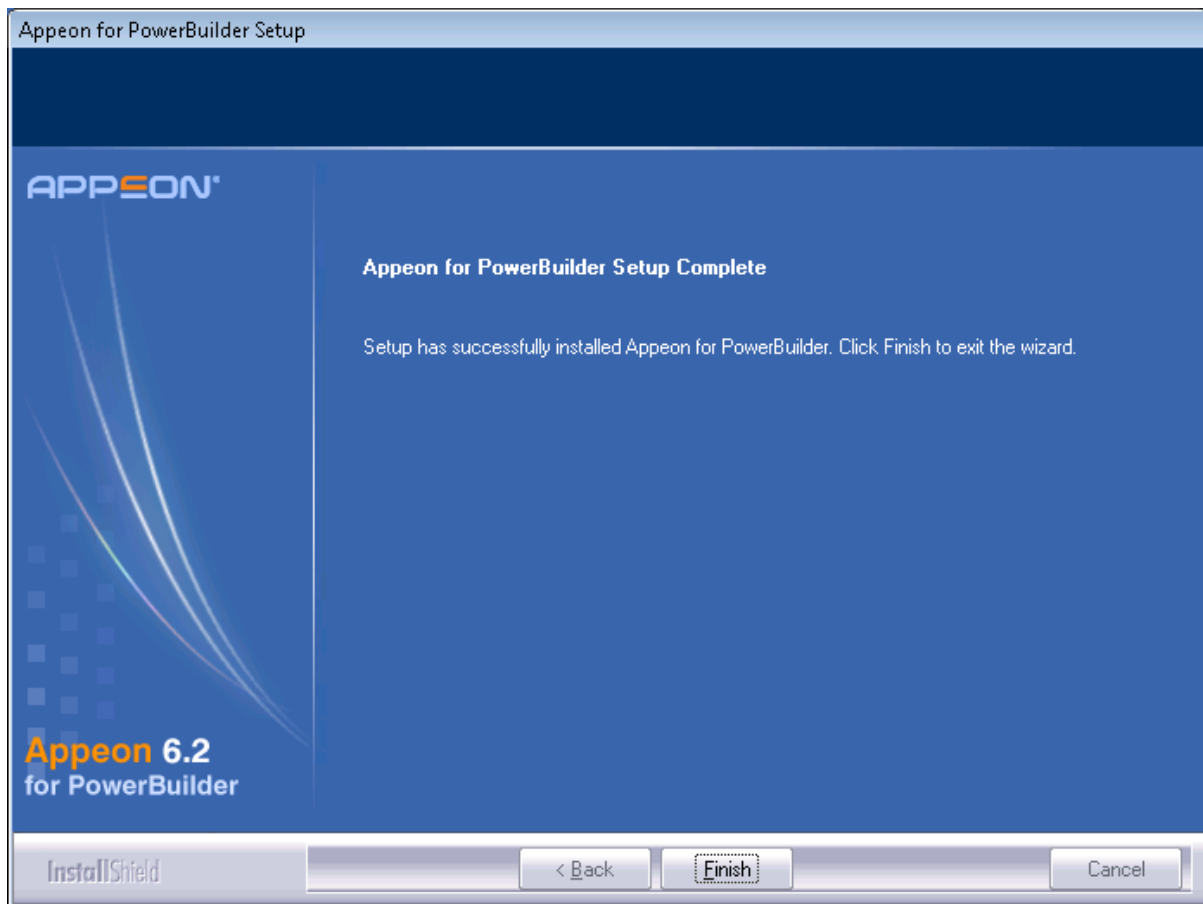
Figure 4-26: Summary of settings

Click *Back* to change any unwanted settings or click *Next* and Setup will begin copying files (Figure 4-27).

Figure 4-27: Appeon Developer installation progress

Step 7 – Wait until the installation is complete.

Step 8 – Click *Finish* to exit (Figure 4-28).

Figure 4-28: Setup Complete

4.3.4 Appeon Server Web Component installation (for third-party Web servers only)

If you use a third-party Web server or set up an individual machine (separate from the application server) as the Web server, install the Appeon Server Web Component. If not, you do not need to run the installation of the Appeon Server Web Component separately since it is included in Appeon Server.

4.3.4.1 Prerequisites

- On Windows 2000, XP or 2003, install a third-party Web server that is compatible with the WebLogic redirector plug-in. For a list of compatible third-party Web servers, refer to Section 3.2.3: [\(Optional\) Third-party Web server](#).
- Shut down the Web server and any other Windows programs before beginning the installation process.

4.3.4.1.a Prerequisites if Web Component installed to multiple third-party Web servers

Appeon Server Web Component can be installed to multiple third-party Web servers. Make sure all third-party Web servers meet the above requirements and repeat the installation steps for the Appeon Server Web Component on each participating Web server.

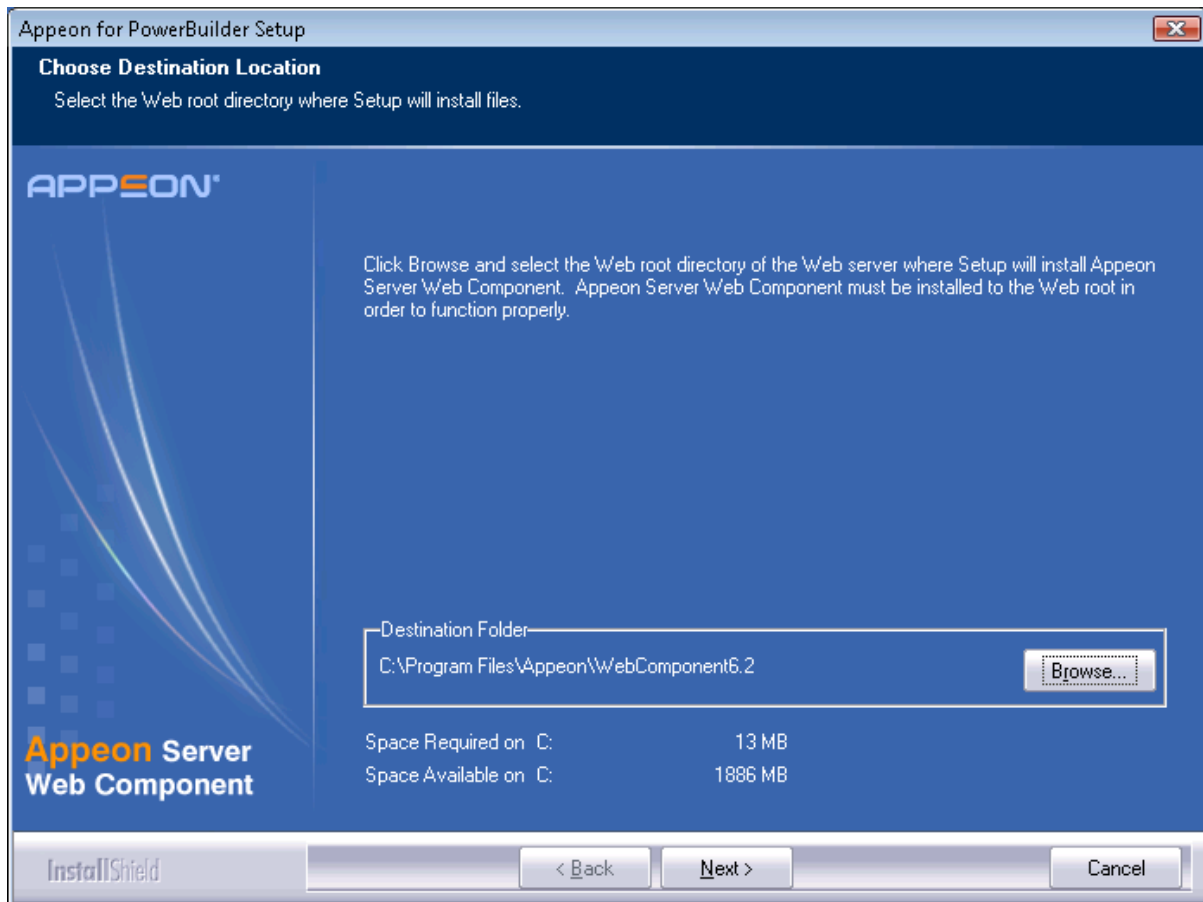
4.3.4.2 Installation instructions

Step 1 – Launch the Appeon for PowerBuilder Setup program and select to install Appeon Server Web Component (see [Starting the installation](#) section).

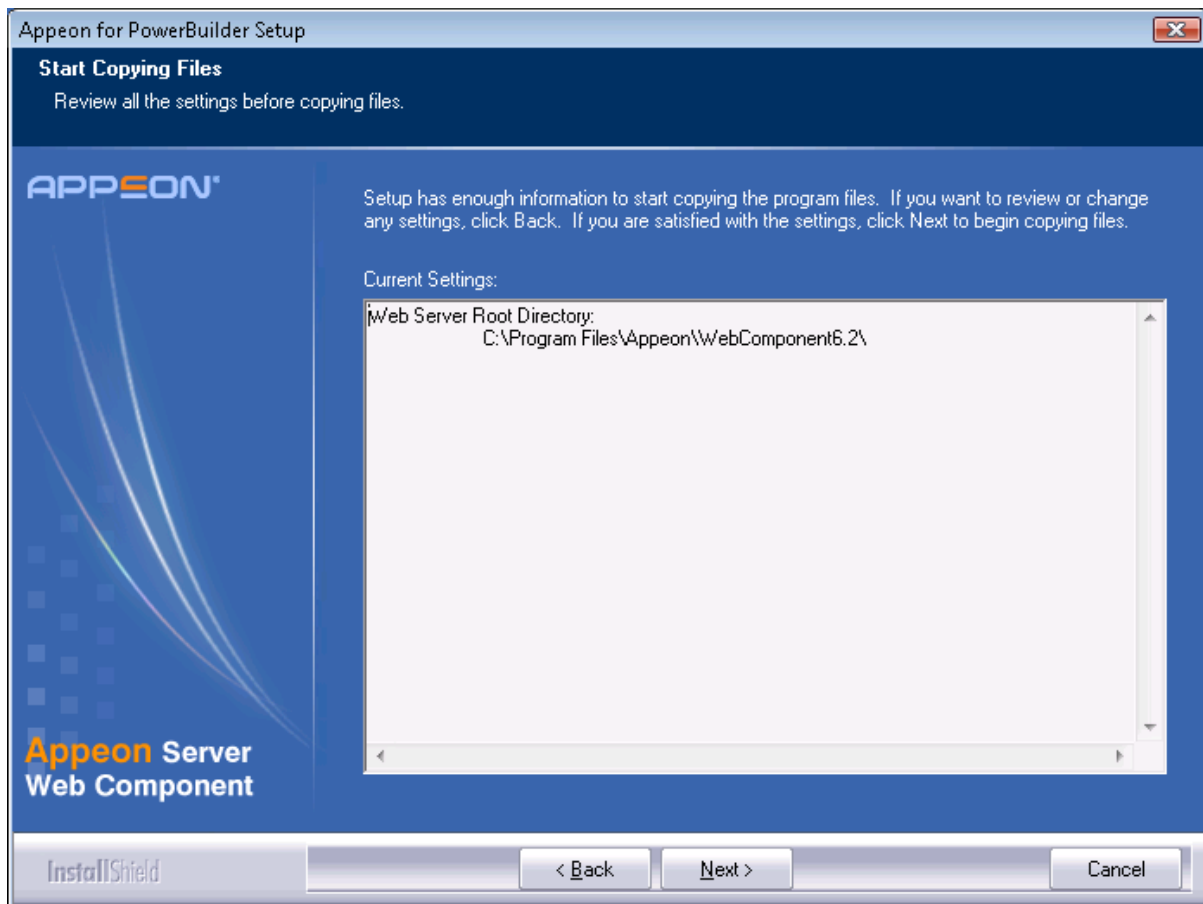
Step 2 – Click *Browse* to select the Web root for the Web server (for example, “C:\Program Files\Apache Group\Apache2\htdocs” for Apache 2.0 Web server).

If you do not select the Web root for the Web server, Appeon Server Web Component will be installed to the default path: “C:\Program Files\Appeon\WebComponent6.2”(Figure 4-29), and you must manually copy it to the Web server Web root later in order to run the Web application.

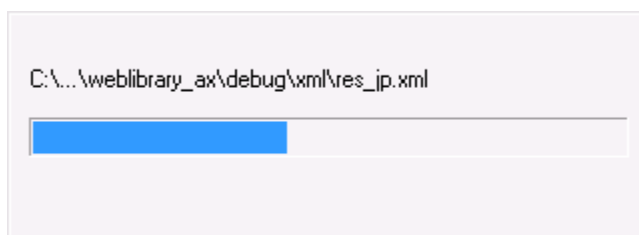
Figure 4-29: Web root



Step 3 – Check the summary of settings (Figure 4-30).

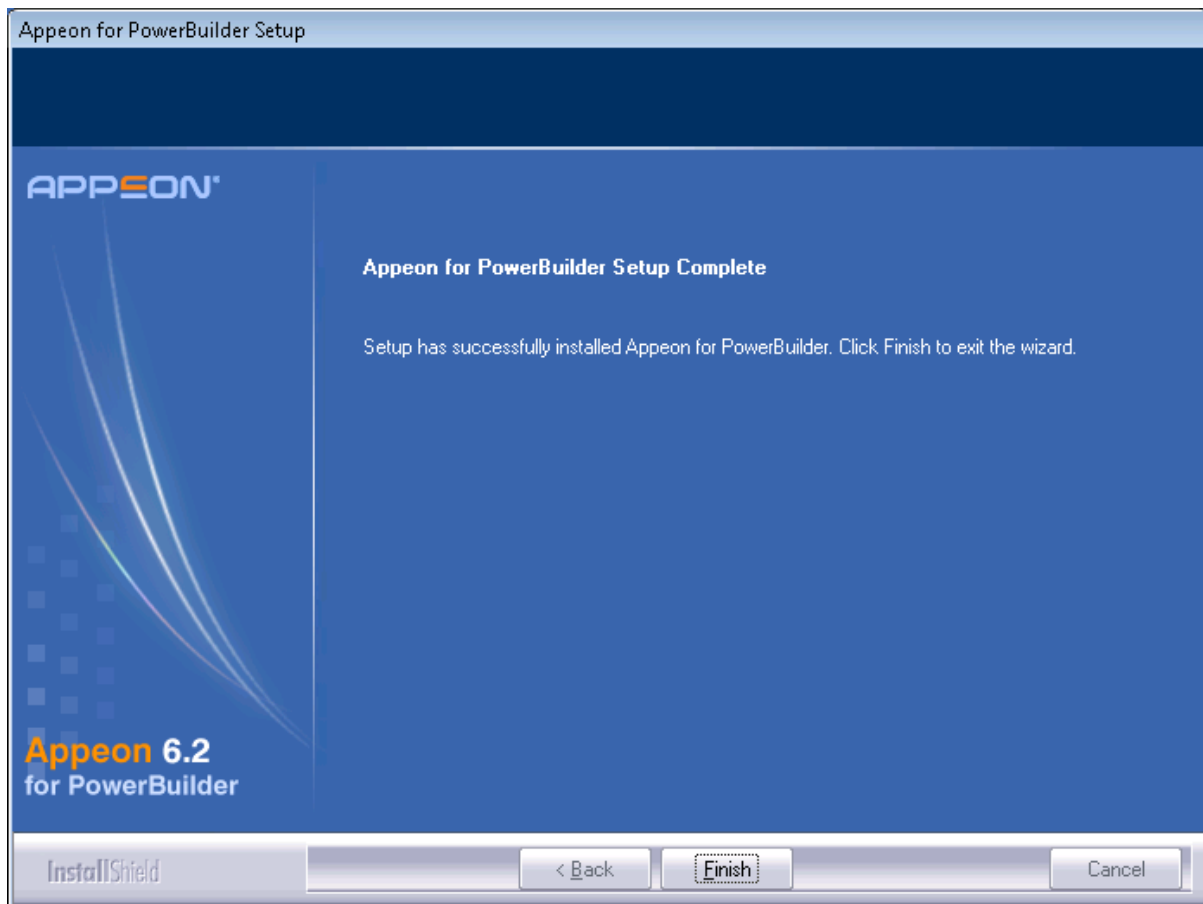
Figure 4-30: Summary of settings

Click *Back* to change any unwanted settings or click *Next* and Setup will begin copying files (Figure 4-31).

Figure 4-31: Appeon Server Web Component installation process

Step 4 – Wait until the installation is complete.

Step 5 – Click *Finish* to exit (Figure 4-32).

Figure 4-32: Setup complete

4.3.4.3 Installing and configuring a Web server redirector plug-in

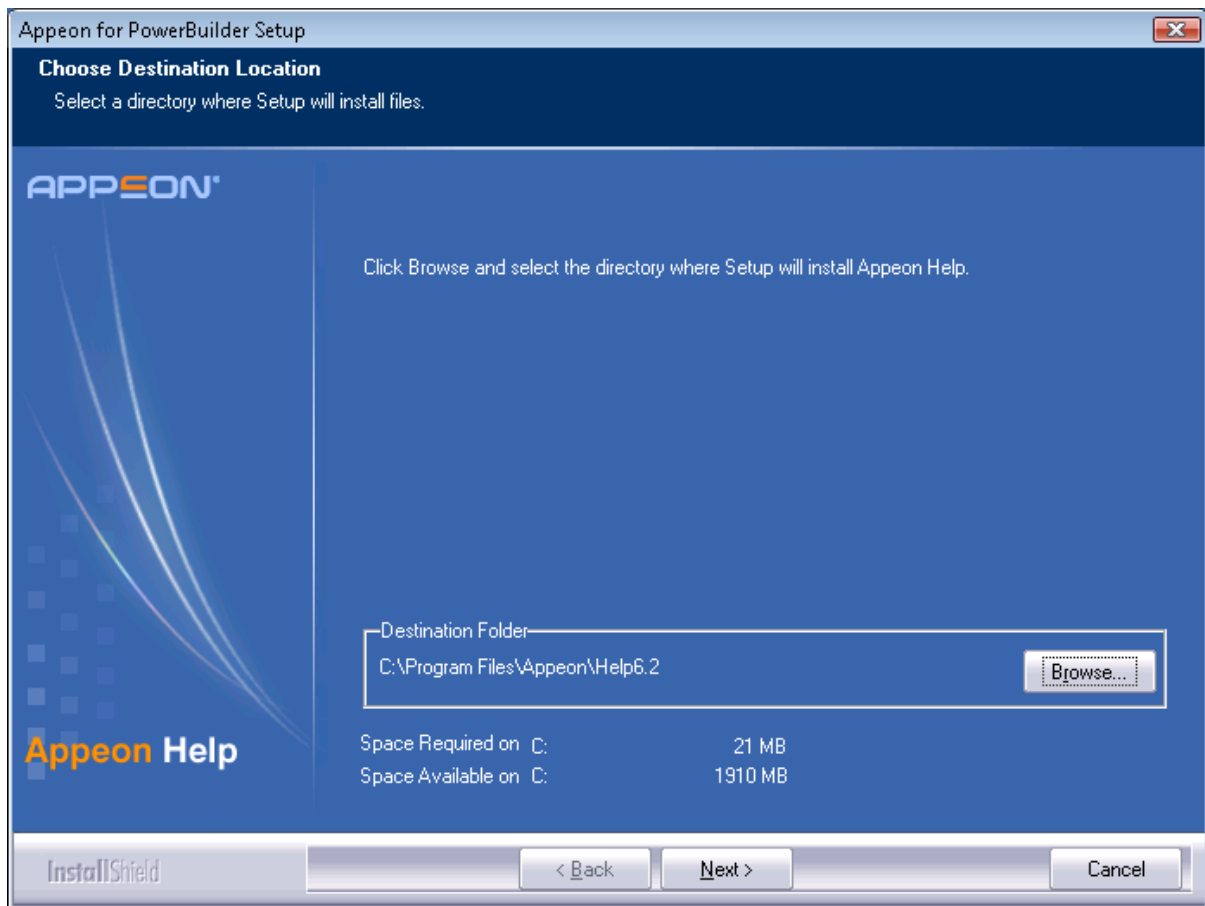
To ensure that the third-party Web server works correctly with Appeon Server, install and configure the corresponding redirector plug-in for the Web server. Instructions for installing and configuring the redirector plug-in are provided in the *Web Server Configuration Guide* in Appeon Help.

4.3.5 Appeon Help installation

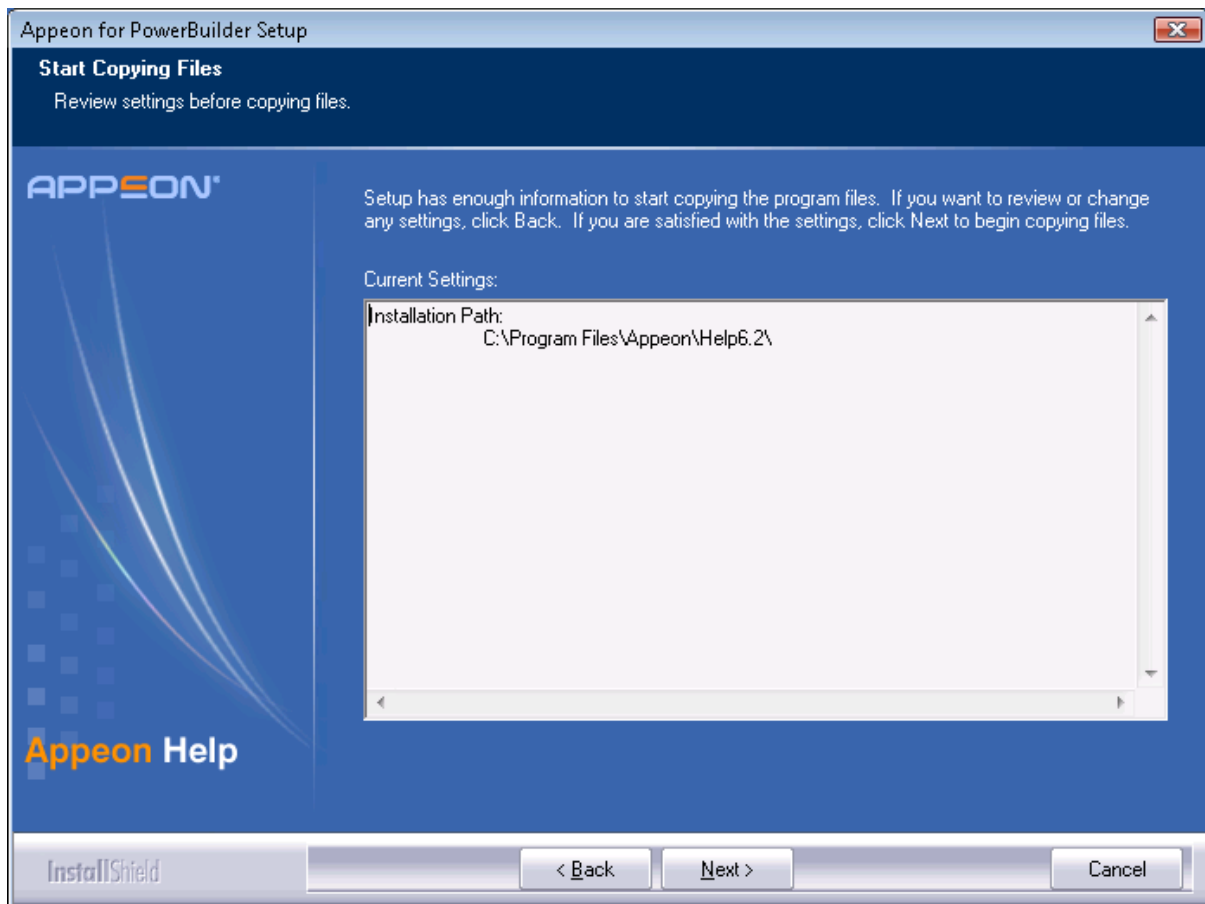
Step 1 – Launch the Appeon for PowerBuilder Setup program and select to install Appeon Help (see [Starting the installation](#) section).

Step 2 – Choose the directory for Appeon Help. Use the default “C:\Program Files\Appeon\Help6.2”, or click *Browse* to select another folder, as shown in Figure 4-33).

Figure 4-33: Help location



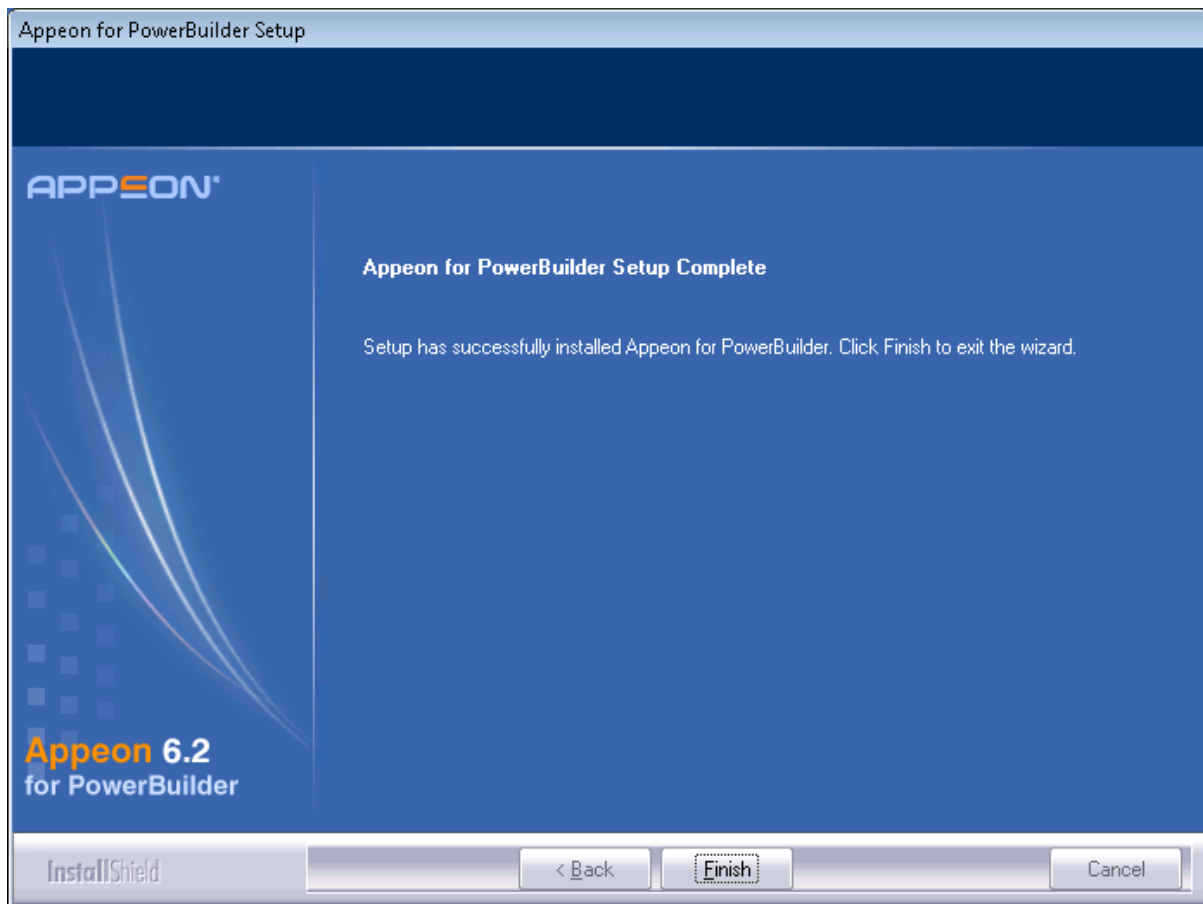
Step 3 – Check the summary of settings (Figure 4-34).

Figure 4-34: Summary of settings

Click *Back* to change any unwanted settings or click *Next* and Setup will begin copying files.

Step 4 – Wait until the installation is complete.

Step 5 – Click *Finish* to exit (Figure 4-35).

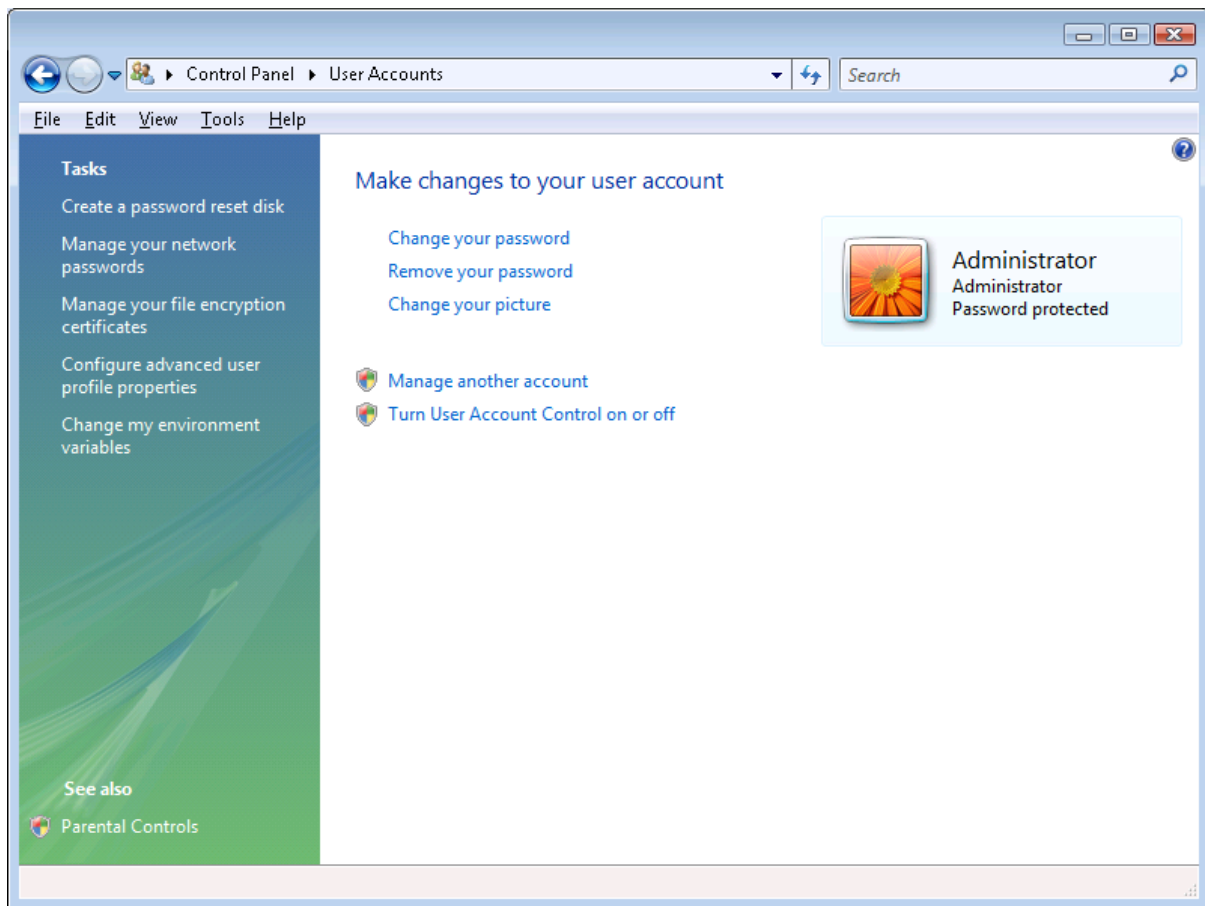
Figure 4-35: Setup complete

4.4 Starting/Stopping Appeon Server

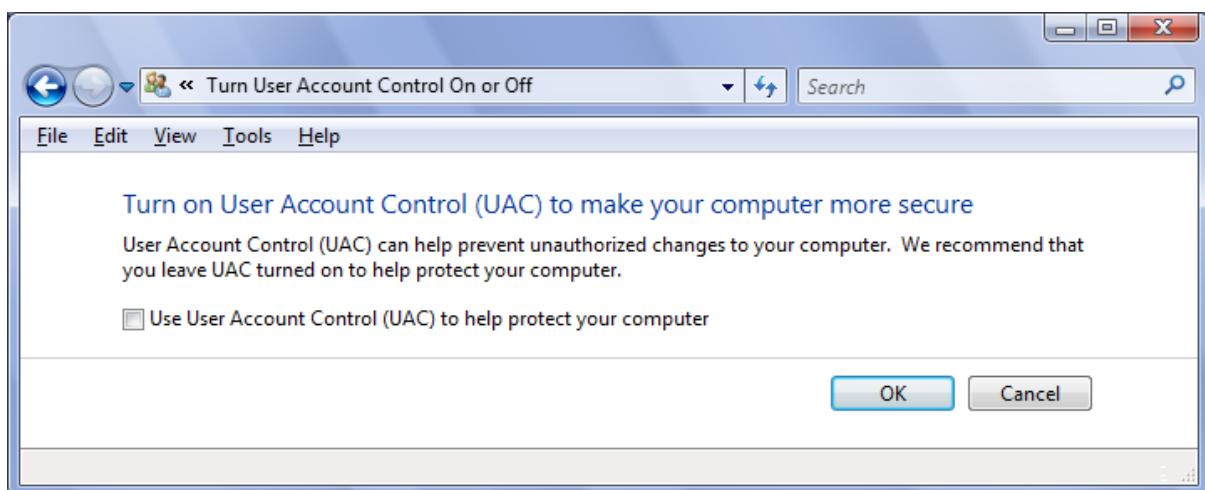
4.4.1 Turn off UAC on Windows Vista and Windows 2008

Running Appeon Server on Windows Vista or Windows 2008 require turn off the User Account Control of the system. Follow the steps below to turn off this Windows feature.

Step 1 - Go to Settings | Control Panel | User Accounts, click *Turn User Account Control on or off* (Figure 4-36).

Figure 4-36: User accounts page

Step 2 - Uncheck the check box of *Use User Account Control (UAC) to help protect your computer*. Click *OK* (Figure 4-37).

Figure 4-37: Turn user account control on or off

Step 3 - Restart the computer.

4.4.2 Starting Apeon Server

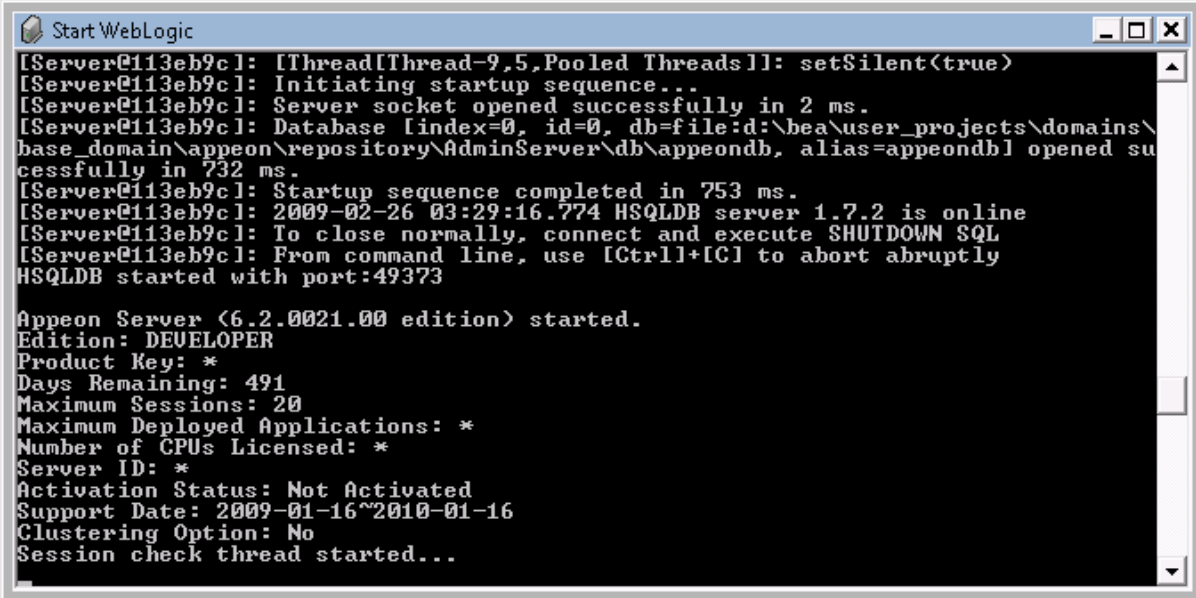
Once Apeon Server has been installed and integrated into WebLogic, starting WebLogic server will automatically start Apeon Server. To start WebLogic/Apeon Server:

Open the Windows Start menu and select: Programs | Apeon 6.2 for PowerBuilder | Apeon Server for WebLogic | Start WebLogic.

If you are running WebLogic server in Production mode, you must enter your user name and password to start the server. The user name and password was created when you configured the domain.

When the server startup process is completed, the following message will appear in the command window, as shown in Figure 4-38.

Figure 4-38: WebLogic server startup window



```
[Server@113eb9c]: [Thread[Thread-9,5,Pooled Threads]]: setSilent(true)
[Server@113eb9c]: Initiating startup sequence...
[Server@113eb9c]: Server socket opened successfully in 2 ms.
[Server@113eb9c]: Database [index=0, id=0, db=file:d:\bea\user_projects\domains\
base_domain\apeon\Repository\AdminServer\db\apeondb, alias=apeondb] opened su
cessfully in 732 ms.
[Server@113eb9c]: Startup sequence completed in 753 ms.
[Server@113eb9c]: 2009-02-26 03:29:16.774 HSQLDB server 1.7.2 is online
[Server@113eb9c]: To close normally, connect and execute SHUTDOWN SQL
[Server@113eb9c]: From command line, use [Ctrl]+[C] to abort abruptly
HSQLDB started with port:49373

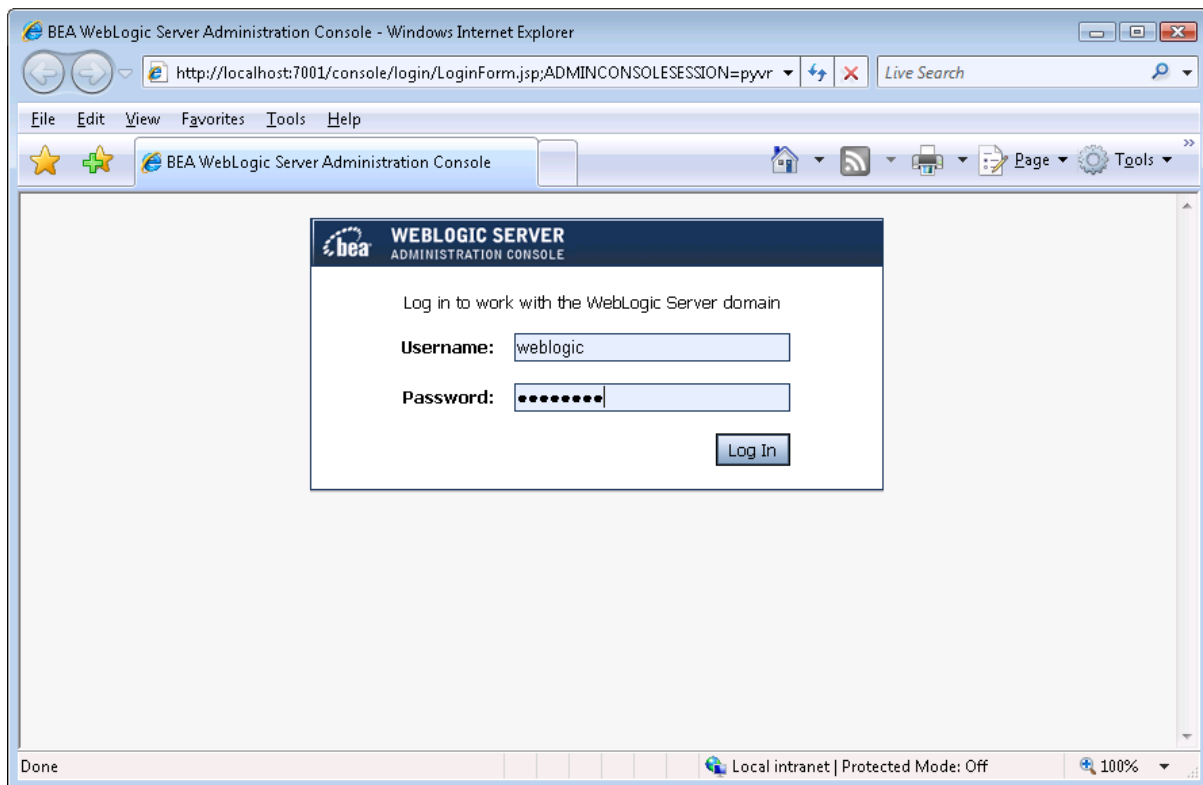
Apeon Server (6.2.0021.00 edition) started.
Edition: DEVELOPER
Product Key: *
Days Remaining: 491
Maximum Sessions: 20
Maximum Deployed Applications: *
Number of CPUs Licensed: *
Server ID: *
Activation Status: Not Activated
Support Date: 2009-01-16~2010-01-16
Clustering Option: No
Session check thread started...
```

4.4.3 Logging in to WebLogic Server Administration Console

Step 1 – From the computer on which the WebLogic server is running, open the Windows Start menu and select: Programs | Apeon 6.2 for PowerBuilder | Apeon Server for WebLogic | WebLogic Manager.

The logon page of “WebLogic Server Administration Console” appears, as shown in Figure 4-39.

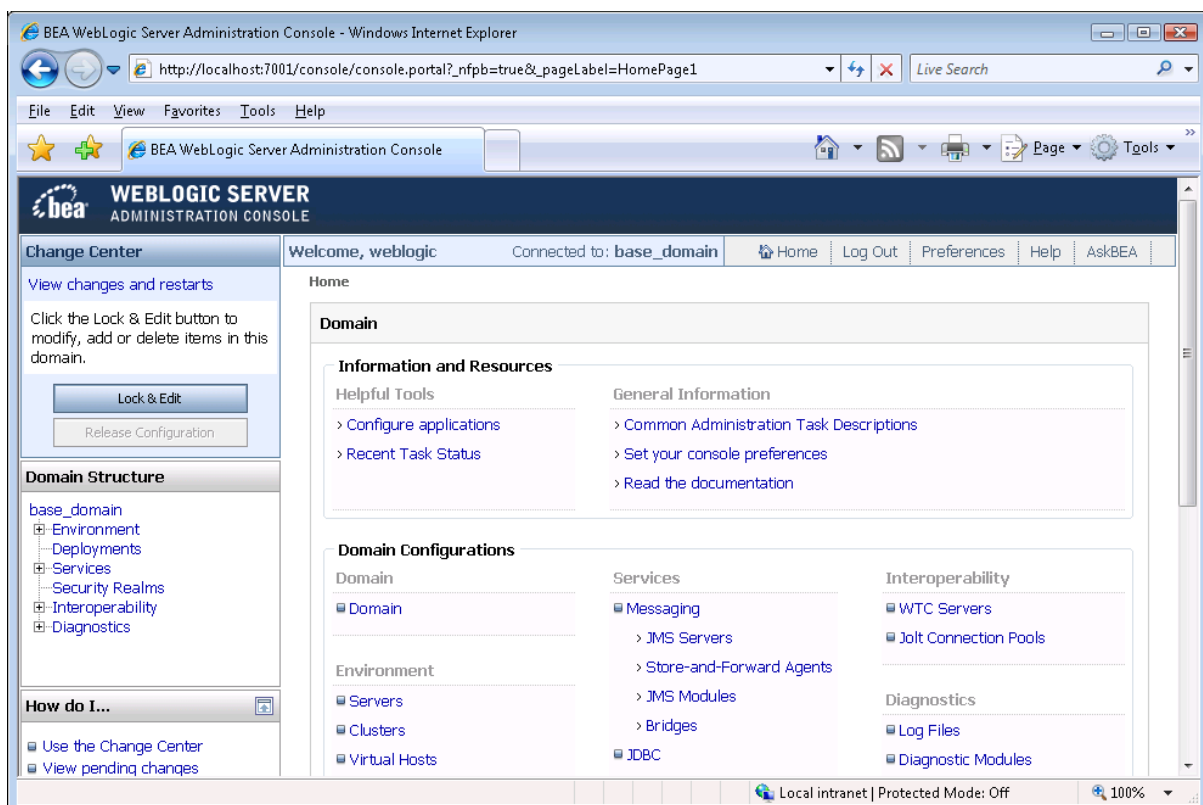
Figure 4-39: Logon page



Step 2 – Log in to the Administration Console using the user name and password specified in the WebLogic Configuration Wizard.

The “WebLogic Server Administration Console” main page appears as shown in Figure 4-40.

Figure 4-40: Main page



4.4.4 Stopping Apeon Server

Stopping WebLogic Server can also shut down Apeon Server:

Change to the WebLogic server domain, for example,

C:\bea\user_projects\domains\mydomain\bin, and run the *stopWebLogic.cmd* file.

If you have any problems in using WebLogic Server, refer to the WebLogic Server documents at <http://edocs.bea.com/>.

5 Configuring Appeon Server Cluster

5.1 Overview

Appeon 6.2 provides its own tools and plug-ins to configure an Appeon Server cluster and implement the load balancing and failover functionalities. An Appeon Server cluster is essentially a group of WebLogic servers, each with Appeon Server and Appeon plug-in installed.

5.2 Configuration instructions

1. Install Appeon Server to multiple WebLogic servers.
 - Set up a group of WebLogic servers.
 - Install Appeon Server to each WebLogic server by following the installation instructions in Section 4.3.2: [Appeon Server installation](#).
2. Create Appeon Server cluster in AEM.
 - Run AEM and configure the *Cluster* tool in the *Server Properties* to add Appeon Servers into a cluster. Instructions are provided in the *Appeon Server Configuration Guide*.
3. Configure the Web server for the Appeon Server cluster.
 - Set up one or more separate third-party Web server(s).
 - Install the Appeon Server Web Component on each third-party Web server by following the installation instructions in Section 4.3.4: [Appeon Server Web Component installation](#).
 - Configure the third-party Web server(s) with the Appeon plug-in. For detailed instructions, refer to the *Web Server Configuration Guide* in Appeon Help.
4. Deploy the application to the Appeon Server cluster and Web server(s). For detailed instructions, refer to the *Appeon Developer User Guide*.

6 Post-Installation Configuration Tasks

The previous chapters provide instructions on how to set up Apeon system architecture, including installing Apeon for PowerBuilder components, as well as configuring Apeon Server cluster.

Once the system is set up and before you start deploying applications, the post-installation configuration tasks listed in Table 6-1 will help ensure that the deployed applications run as desired. *Post-installation configuration tasks* refer to configurations required for Apeon system architecture that affect the running of all applications but do not include configuration tasks performed in Apeon Developer and Apeon Enterprise Manager for specific applications.

Table 6-1: Post-installation tasks

Task	Description	Detailed Instructions Given in...
Client account configuration	Configuration required for the client. Windows login account may not have rights to download the Apeon Xcelerator plug-in.	Section 6.1 in this book
Internet Explorer configuration	Configuration required for the client. Sometimes settings in Internet Explorer can prevent the deployed application from running	Section 6.2 in this book
System language setting	Configuration required for the client, Apeon Server and database server. The Windows language settings can affect the characters that are displayed in the Apeon Web application.	Section 6.3 in this book
JScript.dll version checking	Configuration required for the client. The version of jscript.dll at the client cannot be lower than 5.6.	Section 6.4 in this book
Database JDBC driver preparation	Configuration required for Apeon Server. You should copy the corresponding driver files for the database server in use to the %WL_HOME%\server\lib\ folder in the machine hosting Apeon Server. %WL_HOME% indicates the WebLogic installation path, for example, C:\bea\weblogic81.	<i>JDBC driver preparation</i> section in the <i>Apeon Server Configuration Guide</i>
Configuration for supporting DataWindow Data Cache feature	The configuration is required for database server and Web server. The DataWindow Data Cache feature can cache DataWindow data that are frequently used on the Web server to improve runtime performance, but will not work until you fulfill the configuration requirements for database server(s) and Web server(s).	<i>DataWindow Data Cache</i> section in the <i>Apeon Server Configuration Guide</i>

Configuration for supporting dynamic DataWindows	The configuration is required for database server. Additional configuration at the database server is required for support of dynamic DataWindows.	Section 6.5 in this book
Configuration for fixing an ASE issue	Appeon provides several SQL files for you modifying the chain modes of stored procedures in ASE database to avoid the following error: “Select error: Stored procedure ... may be run only in unchained transaction mode”	Section 6.6 in this book

6.1 Windows account with administrator privileges

When you run an Appeon Web application for the first time, the Xcelerator plug-in must be downloaded to the client. If the login account of the Windows system does not have administrator rights, the Xcelerator plug-in download will be blocked and the application will fail to run.

Ask your administrator to assign the current login account to the Administrators group, so that it can successfully download and register the Xcelerator plug-in.

If using Internet Explorer 7 whose settings are closely bundled with group, you need to also make sure that the group which contains the current login account has rights to download and register ActiveX controls.

6.2 Internet Explorer configuration

6.2.1 Overview

Internet Explorer settings can prevent the Appeon Web application from running. For example, if your security is set too high, the Web files needed may not be downloaded or run properly. Verify that your Internet Explorer settings are correct before you install and use Appeon.

6.2.2 Verifying Internet Explorer settings are correct

You can check the Internet Explorer settings by attempting to run the Appeon Web Demos over the Internet from the Try.Sybase.Com Website:

(<http://www.try.sybase.com/trysybase/AvailableDemos.aspx>)

Click the Appeon Web demos in the list. If you have already signed into MySybase, you will be led directly to the Appeon Demonstration page. If you are not signed in, you will be prompted for your MySybase login credentials. If you do not have a MySybase account, you can create one immediately at no cost.

If you receive error messages, such as “Create session failed” or “Load application failed”, while running Web applications, check your Security and Advanced Internet Explorer settings. Follow the instructions in Section 6.2.3: [Security settings](#) to configure Internet Explorer correctly.

6.2.3 Security settings

6.2.3.1 Choosing security level and zone

It is recommended that you set Internet Explorer's security level to the Default or Custom Level. The security level should not be set to "High".

For Apeon Web applications using any of the following features – call OLE objects or DLL files or run executable programs on the Client – it is recommended that you specify Custom Level security settings appropriately so Internet Explorer will not prevent the ActiveX control or the Apeon Xcelerator plug-in from being downloaded. Refer to Section 6.2.3.3 for information on how to specify Custom Level settings.

If you use a firewall, make sure that it does not block JavaScript files and permits connection to the specified port number if port 80 is not used.

Typically, if Web applications are within a corporate LAN, they fall into the *Local intranet* zone; if you access Apeon Web applications on the Internet, they belong to the *Internet* zone. Ask your network administrator if you cannot decide to which zone you should apply the security settings.

6.2.3.2 Specifying Default level settings

To set the Internet Explorer security level to the default level:

- Select Tools | Internet Options; the Internet Options dialog box is displayed.
- Click the Security tab.
- Click the appropriate zone.
- Click the *Default Level* button on the Security tab and click *Apply*.

6.2.3.3 Specifying Custom level settings

If you plan to use a custom level, select the zone used to access and run Apeon Web applications and verify that the security options are as shown below:

- Allow previously unused ActiveX controls to run without prompt (If Internet Explorer 7) (Enabled)
- Download signed ActiveX controls (or Download unsigned ActiveX controls in Windows XP) (Enabled)
- Initialize and script ActiveX controls not marked as safe (Prompt)
- Run ActiveX controls and plug-ins (Enabled)
- Script ActiveX controls marked safe for scripting (Enabled)
- File download (Enabled)
- Active scripting (Enabled)
- Allow active content to run in files on My Computer (If the version of Internet Explorer is 6.0 SP2) (Enabled)

To keep you protected from browsing with unsafe settings, Internet Explorer 7 warns you with an Information Bar when current security settings may put you at risk. You can instantly reset Internet Explorer security settings to the "Medium-High" default level by clicking the "Fix My Settings" option in the Information Bar. However, after performing this action, the

access to Apeon applications may fail, because settings of ActiveX control may be disabled. In this case, check that settings listed above are correctly set.

6.2.4 Add-on settings (for Internet Explorer 7)

Internet Explorer add-on settings determine whether Apeon Xcelerator plug-in can run correctly, therefore you need to perform the following configuration.

6.2.4.1 Enabling Xcelerator add-on

After Apeon Xcelerator plug-in is successfully downloaded and before the application is run, the plug-in must be enabled in Internet Explorer using Add-on Management with the following steps:

Step 1 – Select Tools | Internet Options from Internet Explorer 7.

Step 2 – In the Internet Properties dialog box, click the Programs tab.

Step 3 – On the Programs tab, click *Manage Add-ons*.

Step 4 – Select Xcelerator plug-in from the list and then click *Enable*.

Step 5 – In the Add-on Status box, click *OK*.

Step 6 – Click *OK* to close Manage Add-ons.

6.2.4.2 Discarding add-on disabled mode

To help troubleshoot difficulties launching Internet Explorer or reaching specific websites, you can start in "No-Add-ons" mode where only critical system add-ons are enabled. However, browser window started in "No-Add-ons" mode will not be able to access the Apeon application. In this case, exit Internet Explorer and restart it in normal mode.

6.2.5 Internet Explorer files caching

The Web file caching functionality of Internet Explorer should be fully used in order to ensure optimal performance. This will significantly reduce the time required to load and start an application following the initial load. The configuration outlined below will ensure that you achieve the best performance while safeguarding your application from becoming “stale” (such that out of date cache settings override recent changes).

Step 1 – Open Internet Explorer and select Tools | Internet Options. Verify that the *Empty Temporary Internet Files folder when browser is closed* option is not checked under the Advanced tab of Internet Options.

Step 2 – Click the *Settings* button under the General tab to configure the Temporary Internet Files settings.

Step 3 – Select the *Automatically* radio button and verify that the *Amount of disk space to use* scroll box is set to a reasonable number, such as 200 MB.

Now the browser is set to automatically check for newer versions of a Web application. The browser will also check to see that there is enough allocated space in the Temporary Internet Files folder to allow for caching Apeon Web applications as well as other Web applications and Web sites.

Note: If you experience problems or errors when accessing a Web application after deployment, the cached Web application files may be the cause. There are two ways to solve this problem:

- Check the *Empty Temporary Internet Files folder when browser is closed* option (under the Advanced tab of Internet Options) to ensure that no cached files remain whenever Internet Explorer is restarted or
- Manually delete the temporary Internet files: go to Tools | Internet Options, click the *Delete Files...* button, restart Internet Explorer and try again.

Allowing the temporary Internet files folder to be emptied each time the browser is closed is an option recommended for use only during the development stage. During development, it is best to have the latest Web application loaded in the browser to avoid any problems caused by cached files. When your Web application is ready for production deployment, this setting can be disabled (unchecked) so that the Web application can be cached at each Client PC for better scalability and Client-side performance.

6.2.6 Internet Explorer advanced settings

Some options under the Advanced tab will prevent Apeon Web applications from running properly, such as when *Always send URLs as UTF-8* is disabled. If you cannot load an Apeon Web application, you should try restoring the default settings to see if that resolves the problem. You can restore the default settings by clicking the *Restore Defaults* button.

Note: Clicking the *Default Settings* button will remove the check from *Use HTTP 1.1 through proxy connections*. This setting is required if you access your application through a proxy server.

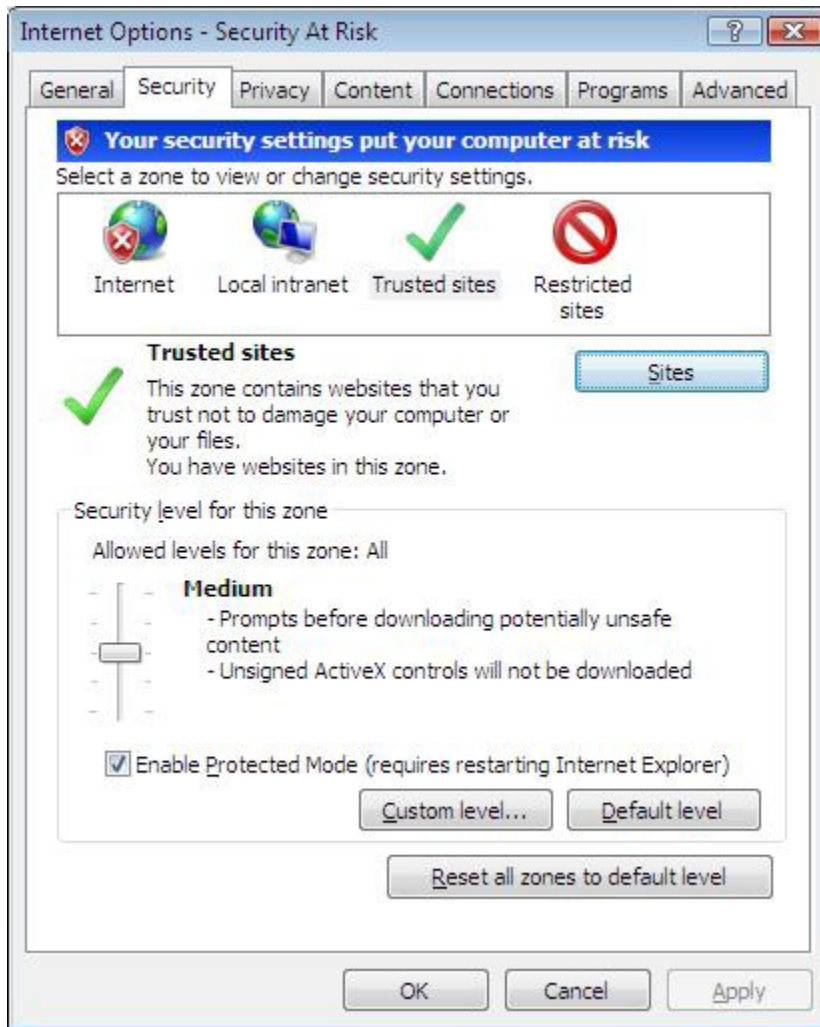
6.2.7 Additional configurations of IE 7 under Windows Vista

To run Apeon Web application in Internet Explorer 7 under Windows Vista, the Internet Explorer security settings must be properly configured. There are two ways:

1st way (recommended): Add the application website to Trusted sites zone. Below are detailed steps.

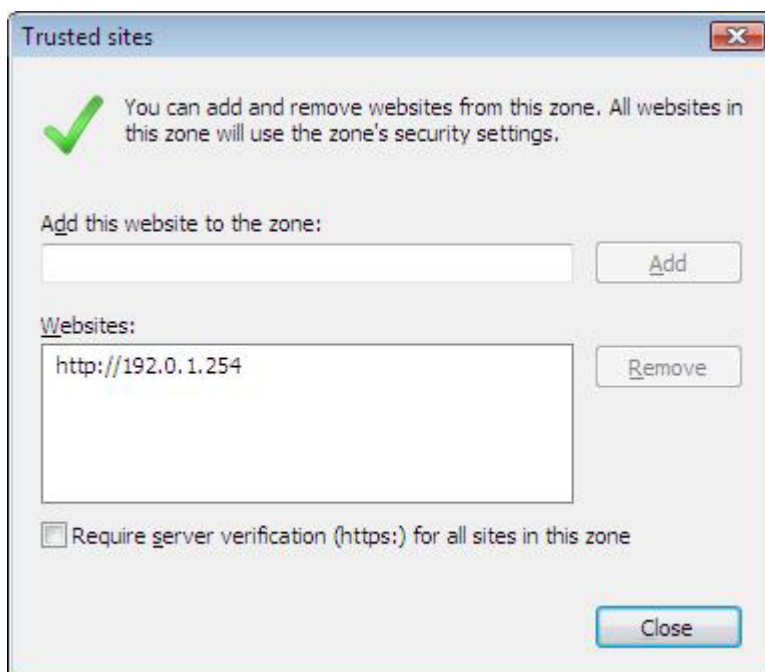
Step1 – Click *Trusted sites* and then click the *Sites* button, as shown in the Figure 6-1.

Figure 6-1: Trusted sites zone settings



Step 2 – Add the application website to the Websites list.

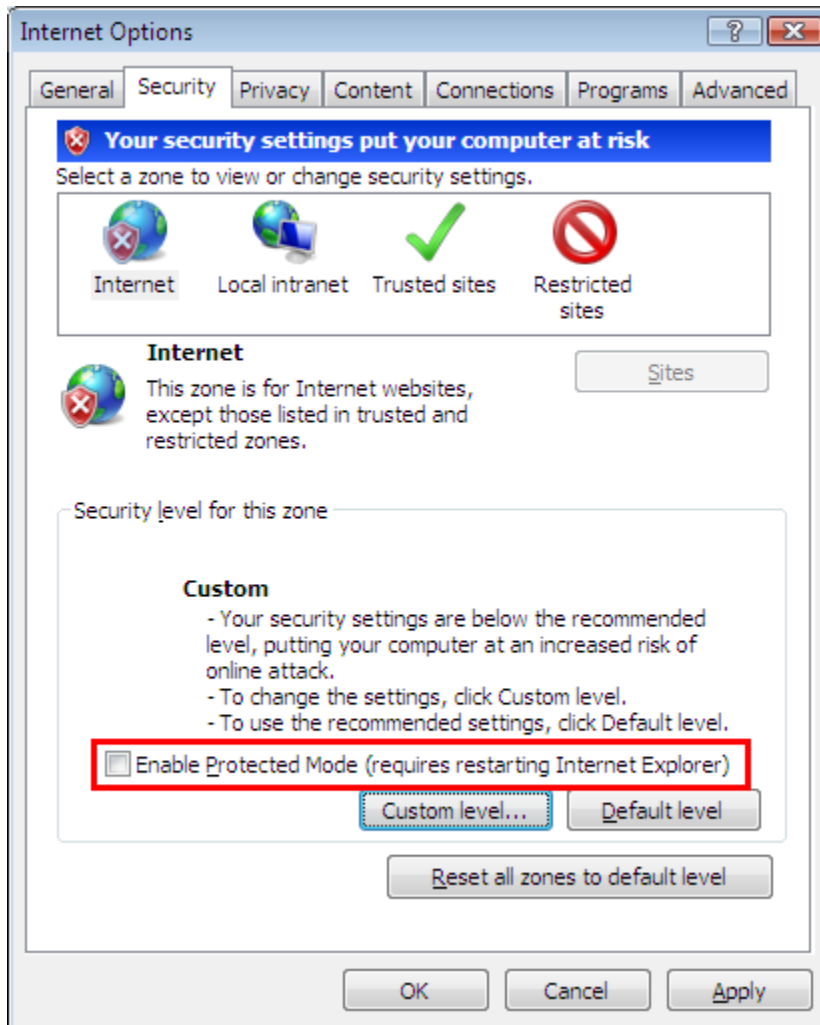
Figure 6-2: adding application website



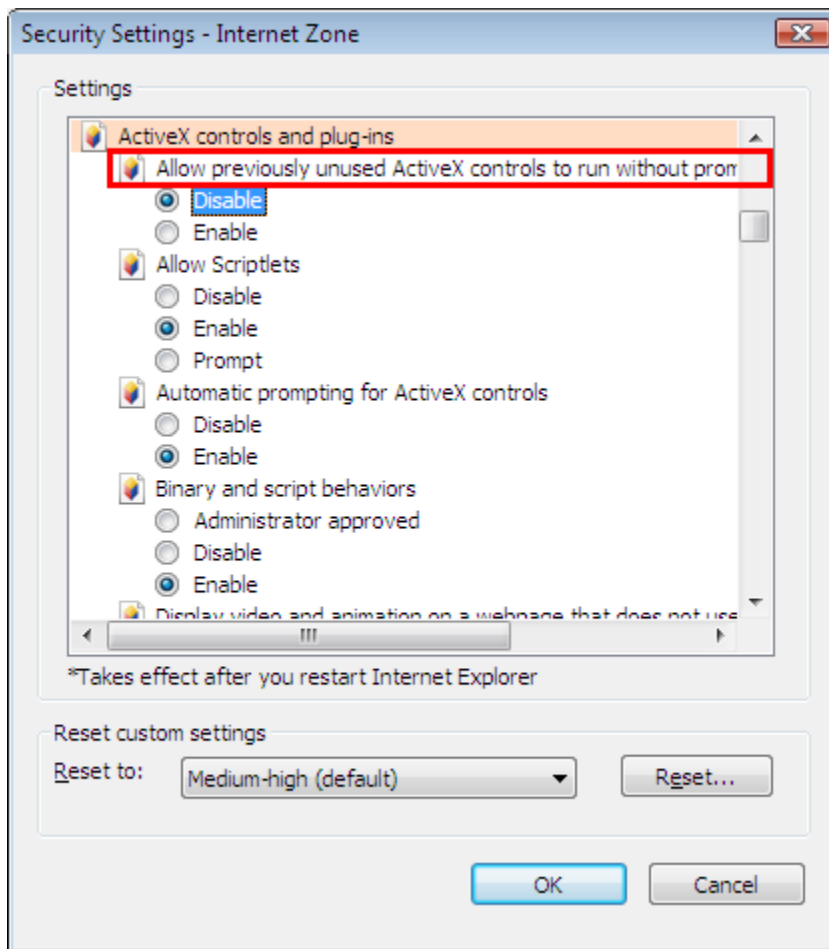
2nd way: configure the security settings of Internet zone. Below are detailed steps.

Step1 – Disable the “Enable Protected Mode” option.

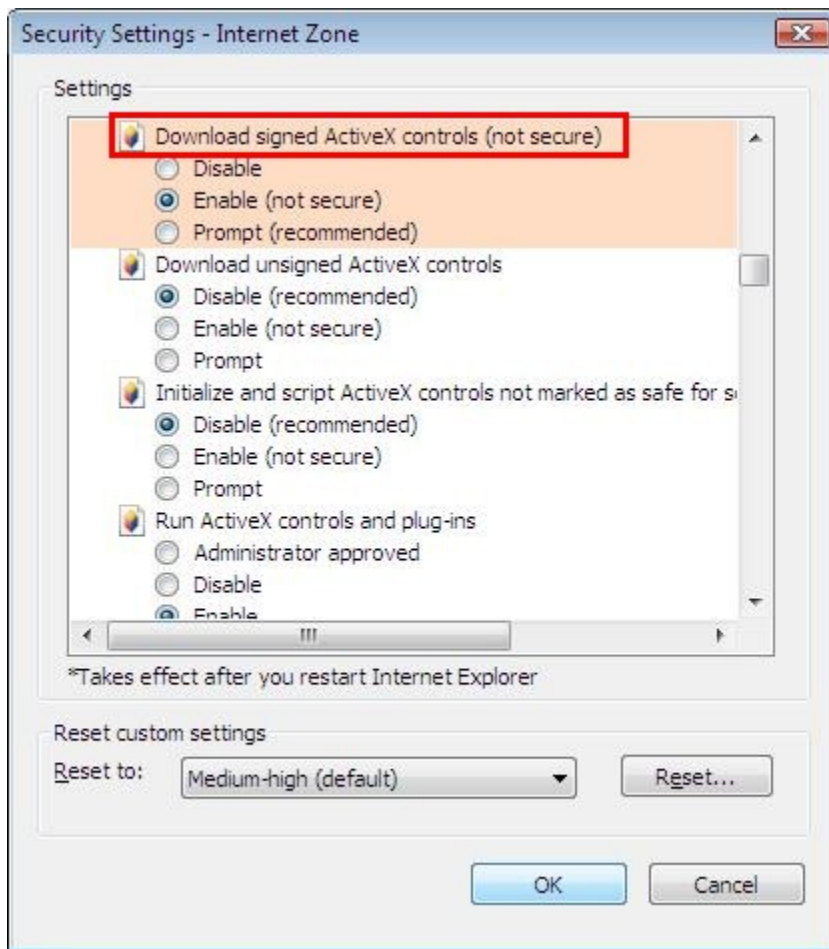
Figure 6-3: Internet zone settings



Step 2 – Enable the “Allow Previously unused ActiveX control to run without prompting” option.

Figure 6-4: Internet zone settings

Step 3 – Enable the “Download signed ActiveX controls” option.

Figure 6-5: Internet zone settings

6.3 System language settings

Sometimes the operating system language settings can affect the characters displayed in the Apeon Web application. To avoid any such display issues, verify that:

- The language of the data in the database used by the application matches the Windows language settings on the machine where Apeon Server is installed.
- The language of the data in the database used by the application matches the Windows language settings on each Client machine where the Web application will be viewed.
- The language of the data in the database used by the Apeon-deployed Web application matches the language settings of the Windows.

To set the language settings in Windows:

Step 1 – Open Windows Start Menu and select Settings | Control Panel.

Step 2 – Double-click *Regional Options*.

Step 3 – Select the appropriate language from the *Your locale* DropDownListBox.

Step 4 – Click the *Set Default...* button. The Select System Local window displays.

Step 5 – Select the appropriate locale. Verify that it is the same as that selected in the *Your locale* list box in Regional Options.

Step 6 – Click *OK* to return to the Regional Options window.

Step 7 – Verify that the language selected in the *Your locale* list box and the language checked as default in *Language settings for the system* settings are the same. The language can be from different regions as long as it is the same language.

Step 8 – Click *Apply* and *OK* in the Regional Options window to accept the settings.

6.4 Checking the version of JScript.dll

Check the version of JScript.dll at the client with the following steps:

Step 1 – Go to the \WINNT\system32 folder at the client.

Step 2 – Open the Properties window for the jscript.dll file.

Step 3 – Get the version information in the Version tab of Properties.

The version of jscript.dll should be 5.6.x.xxxx or above. If the version number is older than 5.6.x.xxxx, please download the latest Windows Script Engine for JScript from <http://www.microsoft.com/downloads/>.

6.5 Configuration for supporting dynamic DataWindows

The following configuration at the database server is required for support of dynamic DataWindows: Find the following SQL files in the “\sql\dynamicsql” folder under the Apeon Server installation directory (for example, C:\bea\user_projects\domains\mydomain\apeon\sql\dynamicsql) and install the corresponding SQL for the database you are using.

- install_apeon_syntaxfromsql_ASA.sql
- install_apeon_syntaxfromsql_ASE.sql
- install_apeon_syntaxfromsql_DB2.sql
- install_apeon_syntaxfromsql_IQ.sql
- install_apeon_syntaxfromsql_MSSQL.sql
- install_apeon_syntaxfromsql_ORACLE.sql

For detailed instructions, refer to the *Dynamic DataWindow* section in *Apeon Features Help*.

6.6 Configuration for ASE Chained mode issue

6.6.1 Known issue with ASE Chained Mode

A PowerBuilder application can execute ASE stored procedures successfully. However, when the PowerBuilder application is converted to the Web, the following error may occur:

“Select error: Stored procedure 'dbo.up_edw001_001' may be run only in unchained transaction mode. The 'SET CHAINED OFF' command will cause the current session to use unchained transaction mode”

There are three ASE stored procedure (SP) modes: chained, unchained and anymode. There are two ASE transaction modes: chained and unchained. For Web applications:

(1) If the transaction mode is chained, the SP running mode must be chained or anymode.

- (2) If the transaction mode is unchained, the SP running mode must be unchained or anymode.
- (3) If the transaction mode and SP mode do not match the requirements in (1) or (2), the error occurs.

6.6.2 Stored procedures provided for solving the issue

Appeon provides two stored procedures that help modify the modes of ASE stored procedures to ensure that the stored procedures meet the requirements in (1) or (2). The following files are located in the “\sql\asechain_sql” folder under the Appeon Server installation directory (for example,

C:\bea\user_projects\domains\mydomain\appeon\sql\asechain_sql).

- (1) readme.txt
- (2) install_appeon_rebuildchainmode.sql: modifies the modes of ASE stored procedures
- (3) uninstall_appeon_rebuildchainmode.sql: restores the original modes of ASE stored procedures

Follow the instructions in the “readme.txt” for the method of modifying the stored procedure modes with the two SQL files.

7 Uninstalling Appeon 6.2

7.1 Overview

To uninstall Appeon for PowerBuilder, uninstall each of its components separately. The uninstall process reverses the actions performed by the Appeon installation program. Uninstall does not delete any user created files in Appeon, such as Web files generated while deploying the demo applications or your own application to Appeon Server. Delete these files manually from the Web root.

Do not try to reverse installation steps or uninstall Appeon by deleting files manually or changing your Registry. This can create serious problems with your system in general and new Appeon releases in particular.

There are two ways to uninstall Appeon components:

- Launch the Appeon uninstall program from Windows Start menu | Programs | Appeon 6.2 for PowerBuilder.
- Launch Add/Remove Programs from the Windows Control Panel. Select the Appeon component and click *Change/Remove* to begin the uninstall process.

7.2 Uninstalling Appeon Developer

Step 1 – Shut down all Windows programs, including all Sybase software:

- Shut down Sybase PowerBuilder
- Stop the Sybase EP Management Service.

Step 2 – Verify that Appeon Developer and all Sybase software have been shut down.

Open Windows Task Manager, switch to the Process tab and verify that the following processes are not running. If they are running, end them:

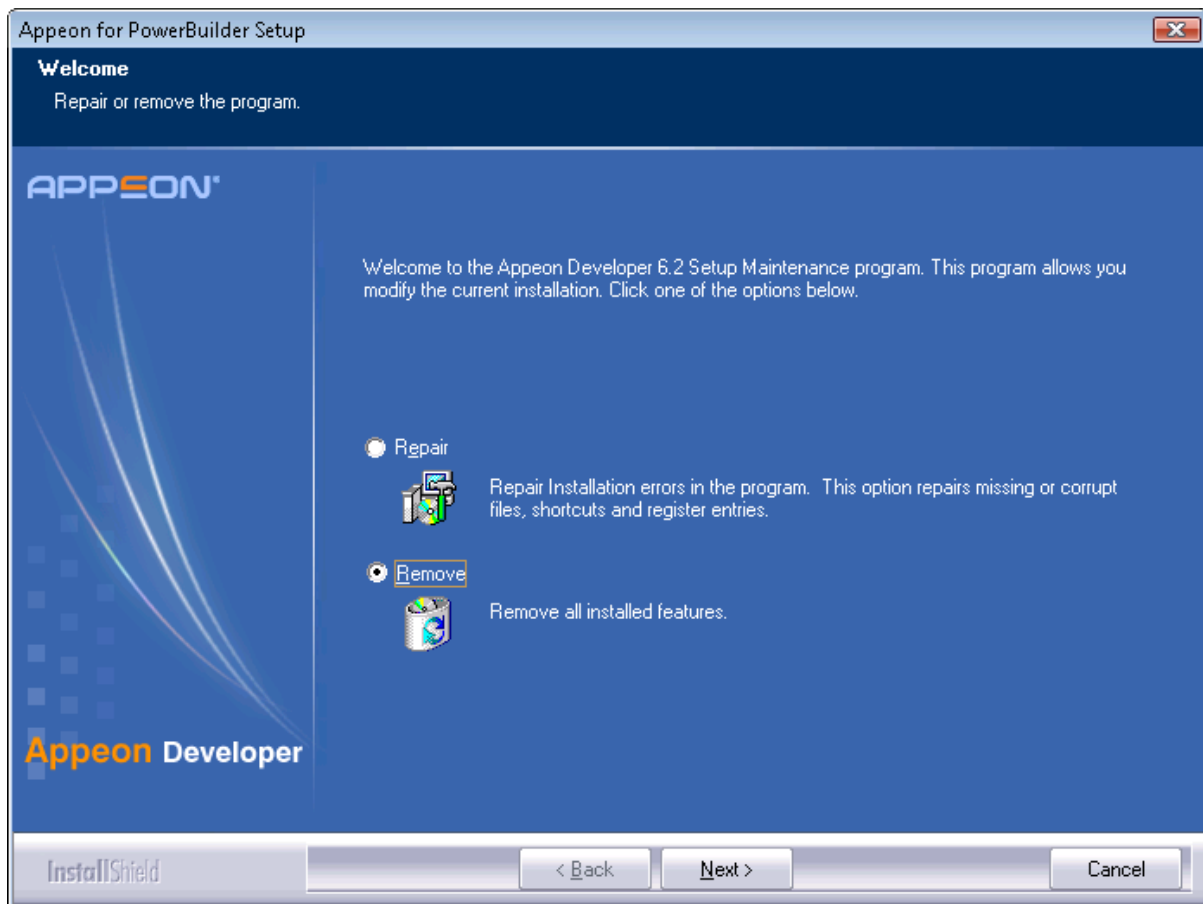
- EonADT62.exe
- pb90.exe, pb100.exe, pb105.exe, *pb110.exe*, and pb115.exe
- java.exe, jagsrv.exe and jagsrvagent.exe
- dbengx.exe and dbsrvx.exe

If *EonADT62.exe* is running when attempting to uninstall Appeon Developer on a machine running Windows 2000, 2003, 2008, XP, or Vista, Appeon Setup will detect that the processes are running and an error message will appear.

End the processes in the Processes tab of Windows Task Manager before clicking the *OK* button on the message box. If you click *OK* before ending the process, the message box will continue to display and will not allow you to continue until the processes are ended. In this case, click *Cancel* in the message box, end the process and begin the uninstall process again.

Step 3 – Select Windows Start menu | Programs | Appeon 6.2 for PowerBuilder | Appeon Developer | Uninstall Appeon Developer to begin the uninstall process.

Step 4 – Choose *Remove* to delete all installed features. Click *Next* (Figure 7-1).

Figure 7-1: Welcome page

Step 5 – Confirm the removal of Appeon Developer. Click *OK* to uninstall (Figure 7-2 and Figure 7-3).

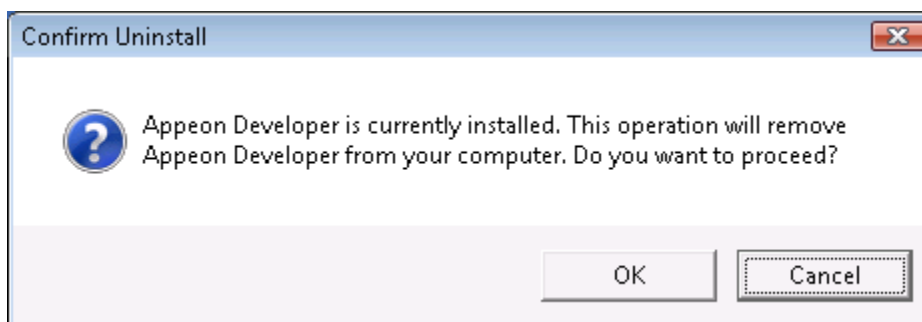
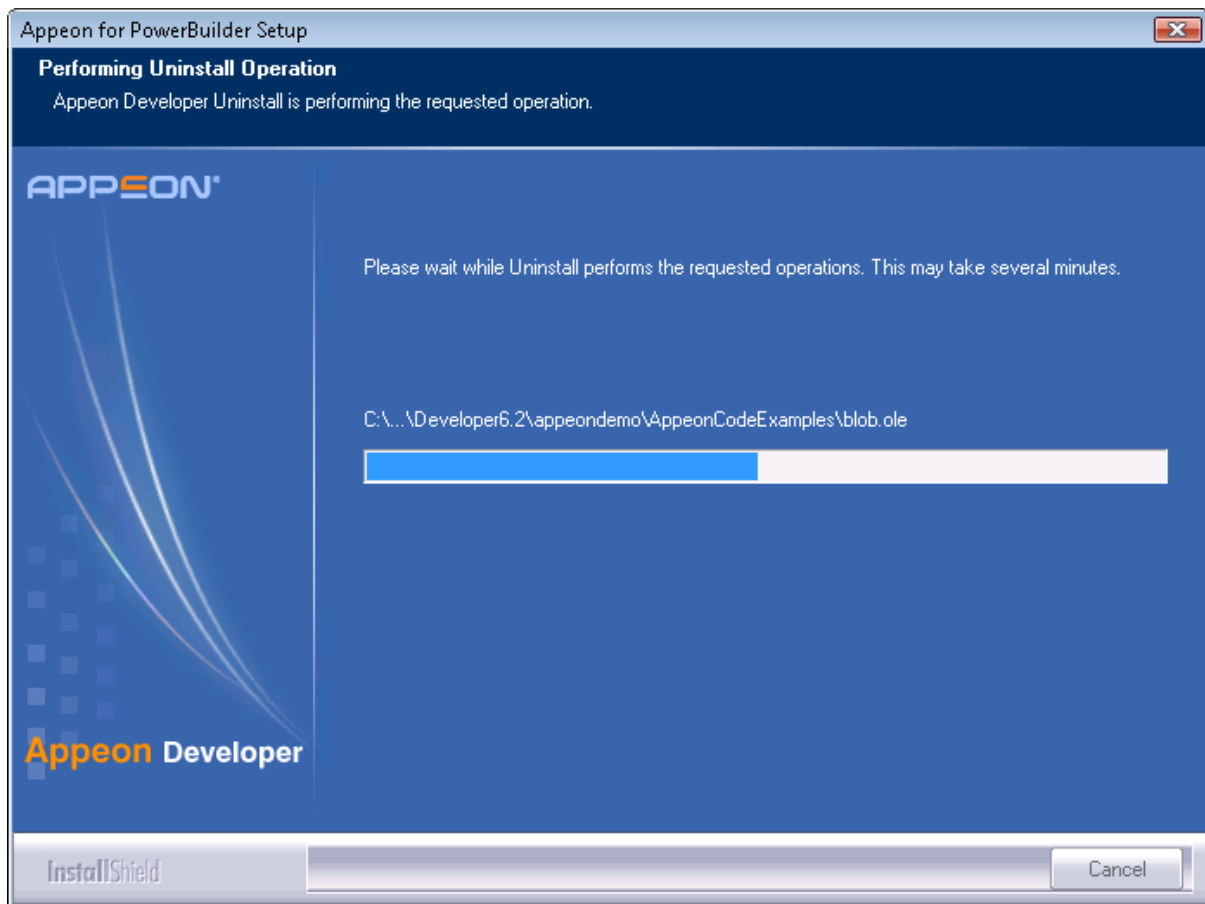
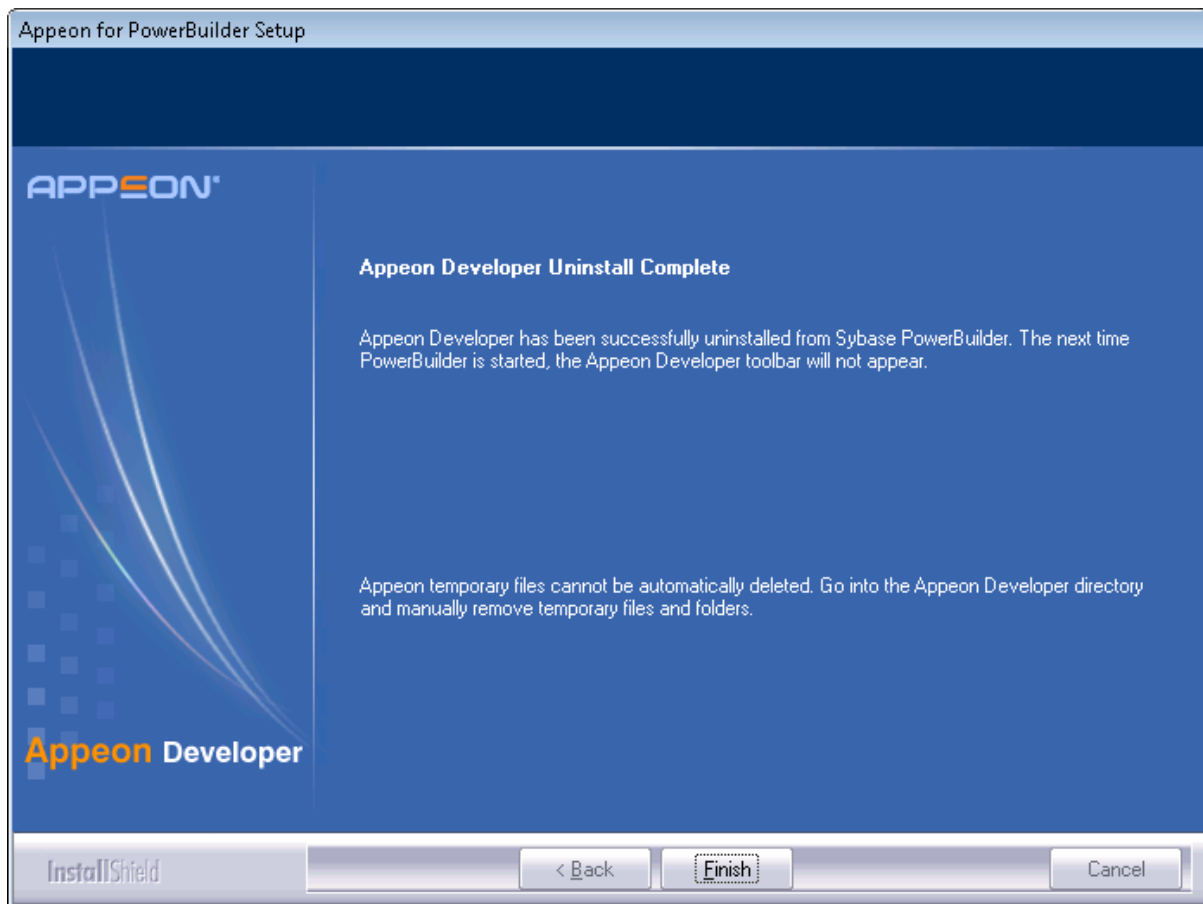
Figure 7-2: Confirm uninstall

Figure 7-3: Appeon Developer uninstall process

Step 6 – Click *Finish* to exit (Figure 7-4).

Figure 7-4: Appeon Developer uninstall complete

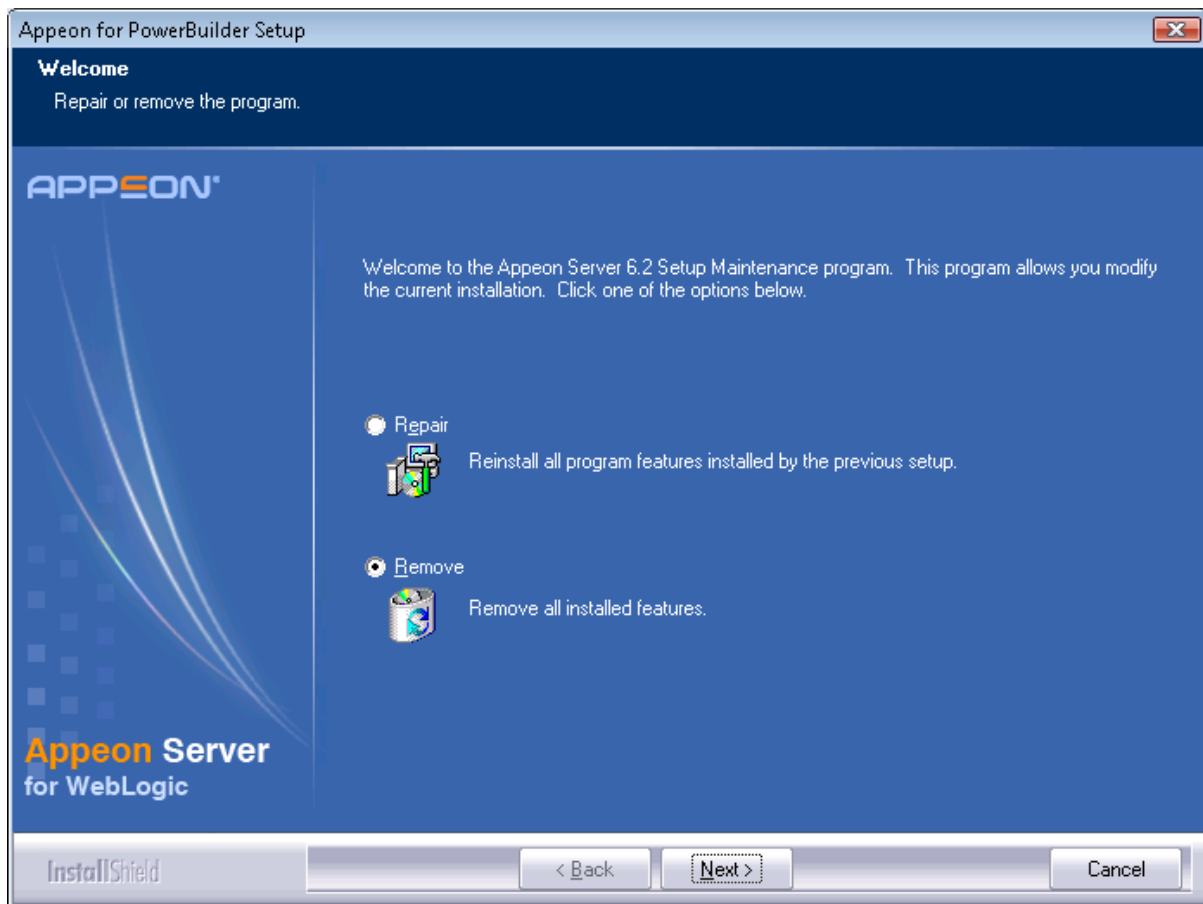
Step 7 – Use Windows Explorer to manually delete the folder where Appeon Developer was installed. This will remove all Appeon Developer files that are not automatically uninstalled.

7.3 Uninstalling Appeon Server

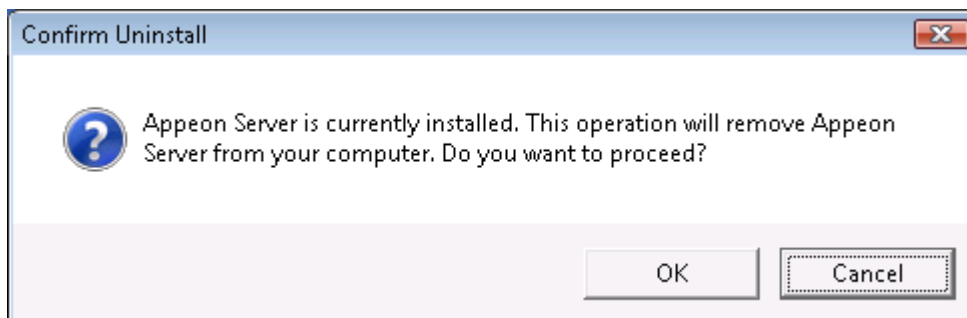
Step 1 – Shut down Appeon Server and WebLogic.

Step 2 – Select Windows Start menu | Programs | Appeon 6.2 for PowerBuilder | Appeon Server for WebLogic | Uninstall Appeon Server to begin the uninstall process.

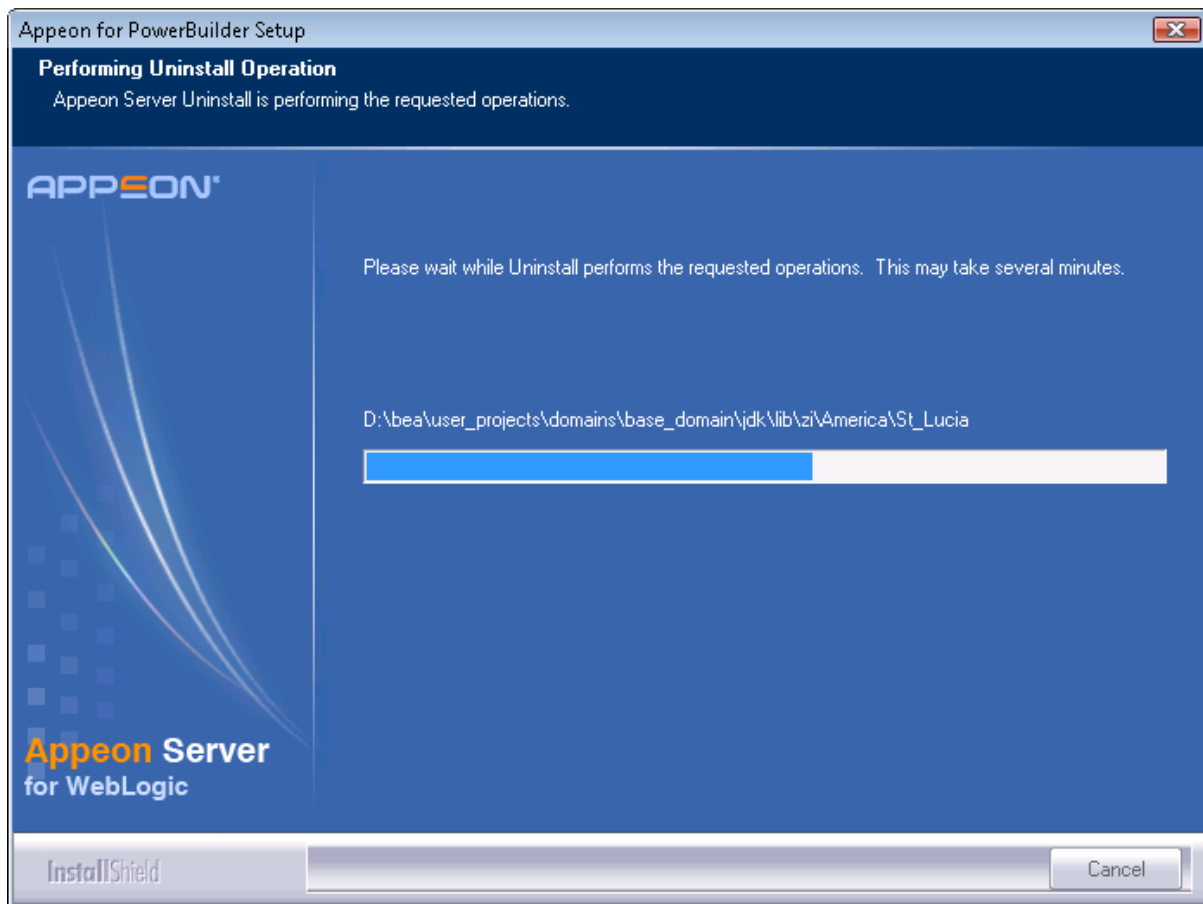
Step 3 – Choose *Remove* to delete all installed features. Click *Next* (Figure 7-5).

Figure 7-5: Welcome page

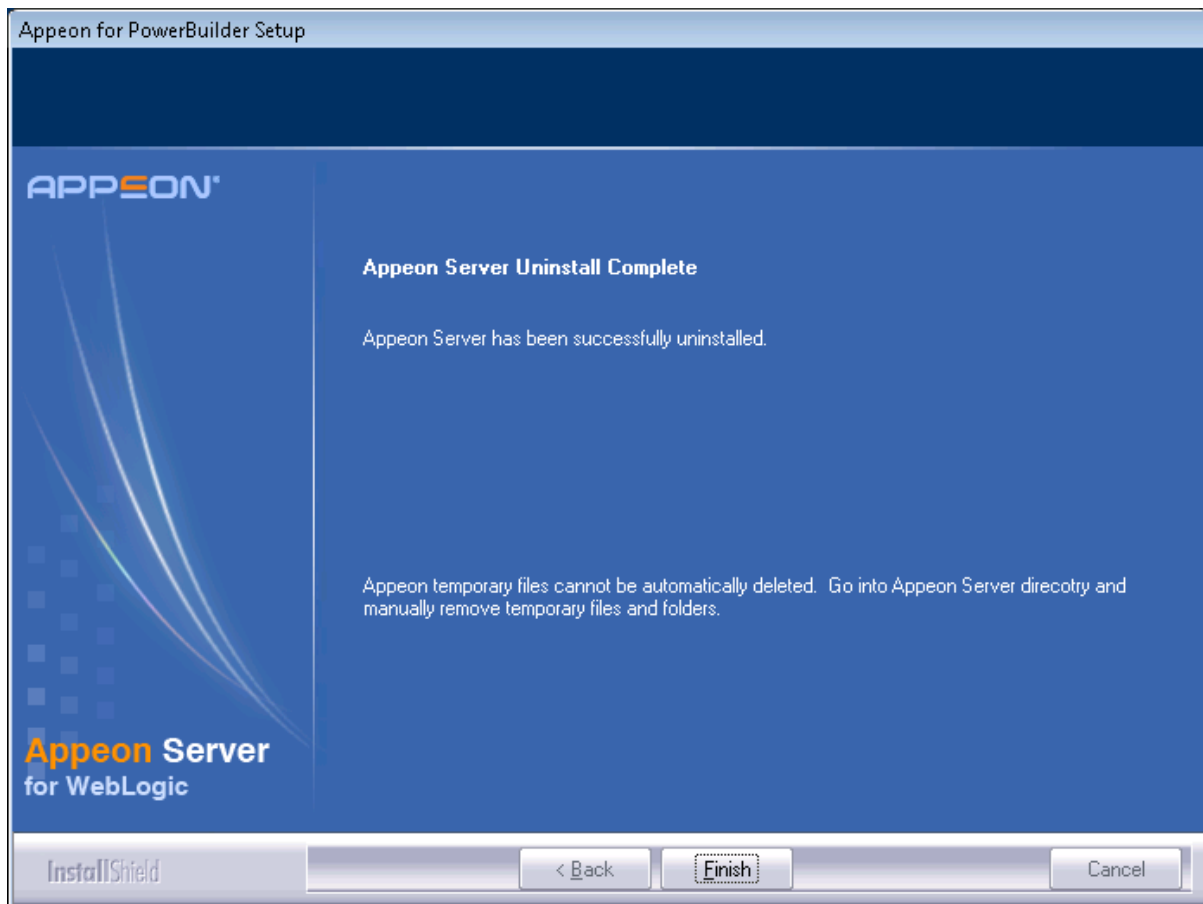
Step 4 – Confirm the removal of Appeon Server. Click *OK* to uninstall (Figure 7-6).

Figure 7-6: Confirm uninstall

Step 5 – Wait until Appeon Server is completely uninstalled (Figure 7-7).

Figure 7-7: Uninstall process

Step 6 – Click *Finish* to exit (Figure 7-8).

Figure 7-8: Appeon Server uninstall complete

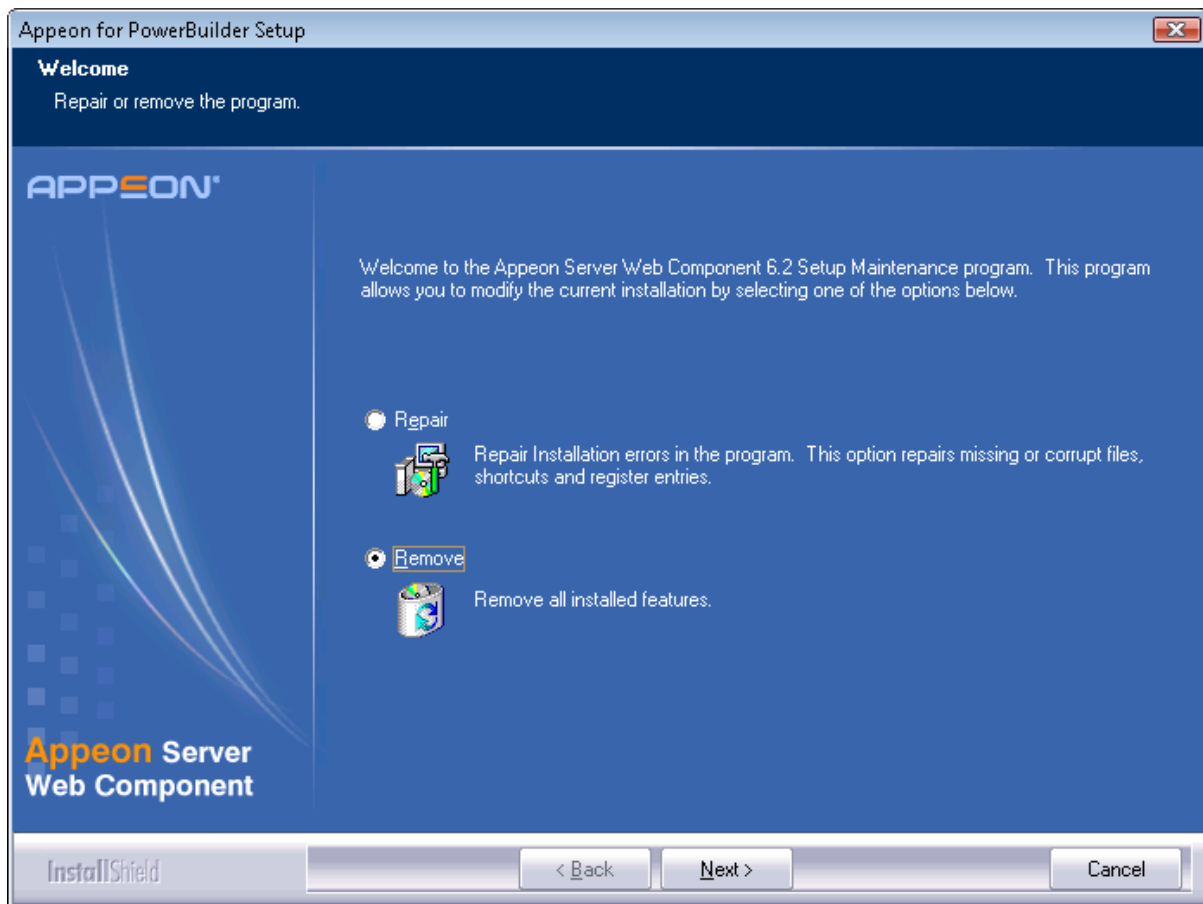
Step 7 – After the uninstall process is complete, remove any files or folders left in the Appeon installation folder.

7.4 Uninstalling Appeon Server Web Component (for third-party Web servers only)

Step 1 – Shut down all Windows programs as well as the Web server.

Step 2 – Select Windows Start menu | Programs | Appeon 6.2 for PowerBuilder | Appeon Web Component | Uninstall Appeon Web Component to begin the uninstall process.

Step 3 – Choose *Remove* to delete all installed features. Click *Next* (Figure 7-9).

Figure 7-9: Welcome page

Step 4 – Confirm the removal of the Appeon Server Web Component. Click *OK* to uninstall (Figure 7-10 and Figure 7-11).

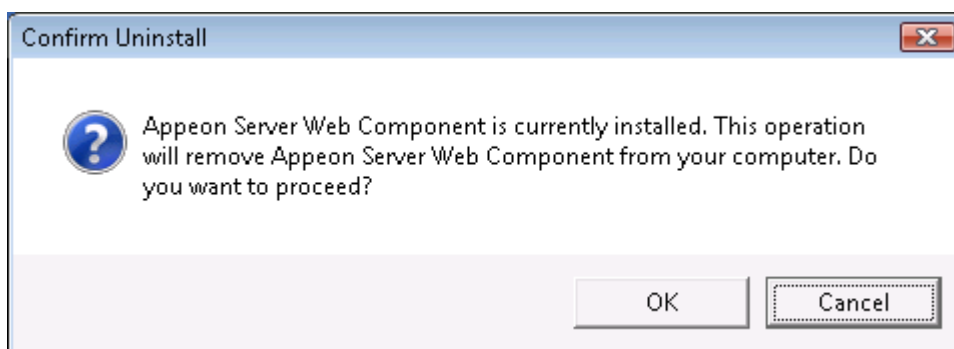
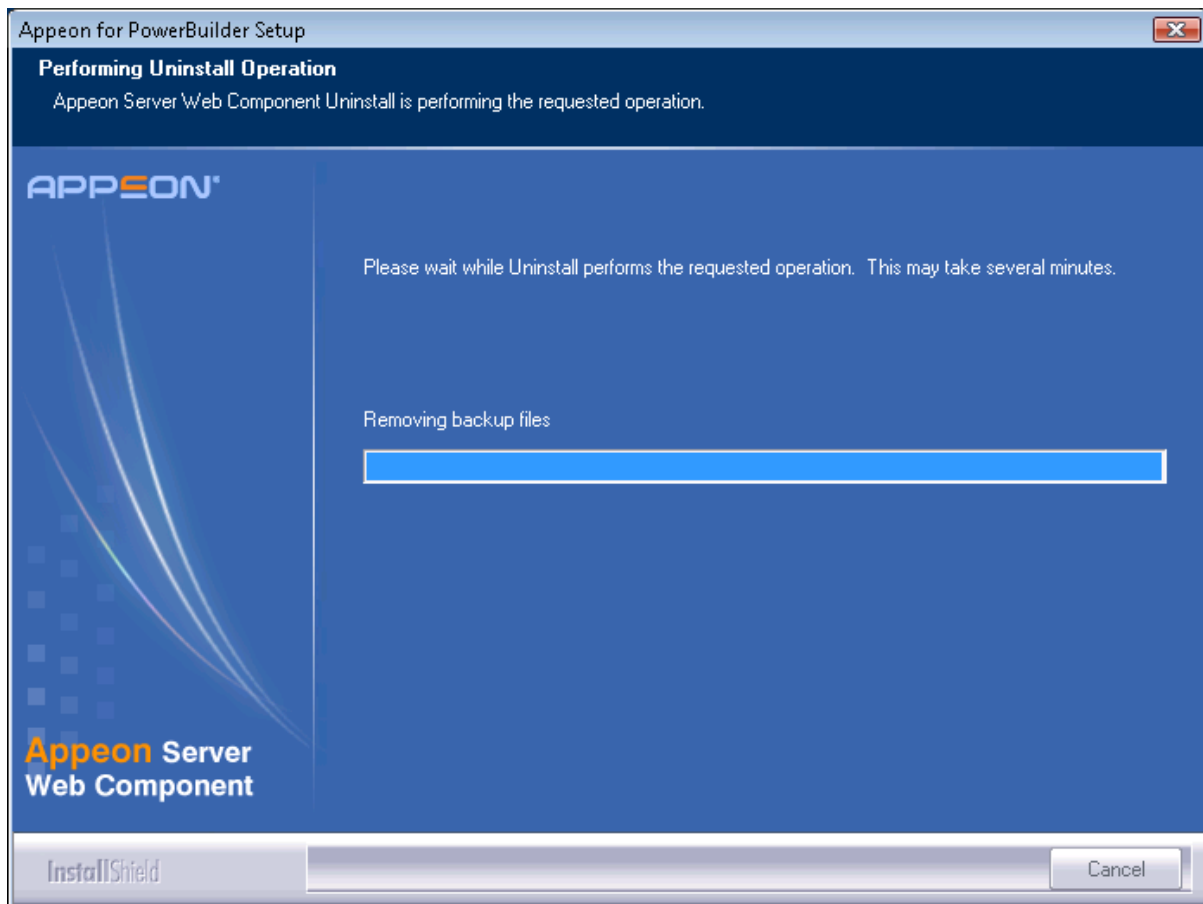
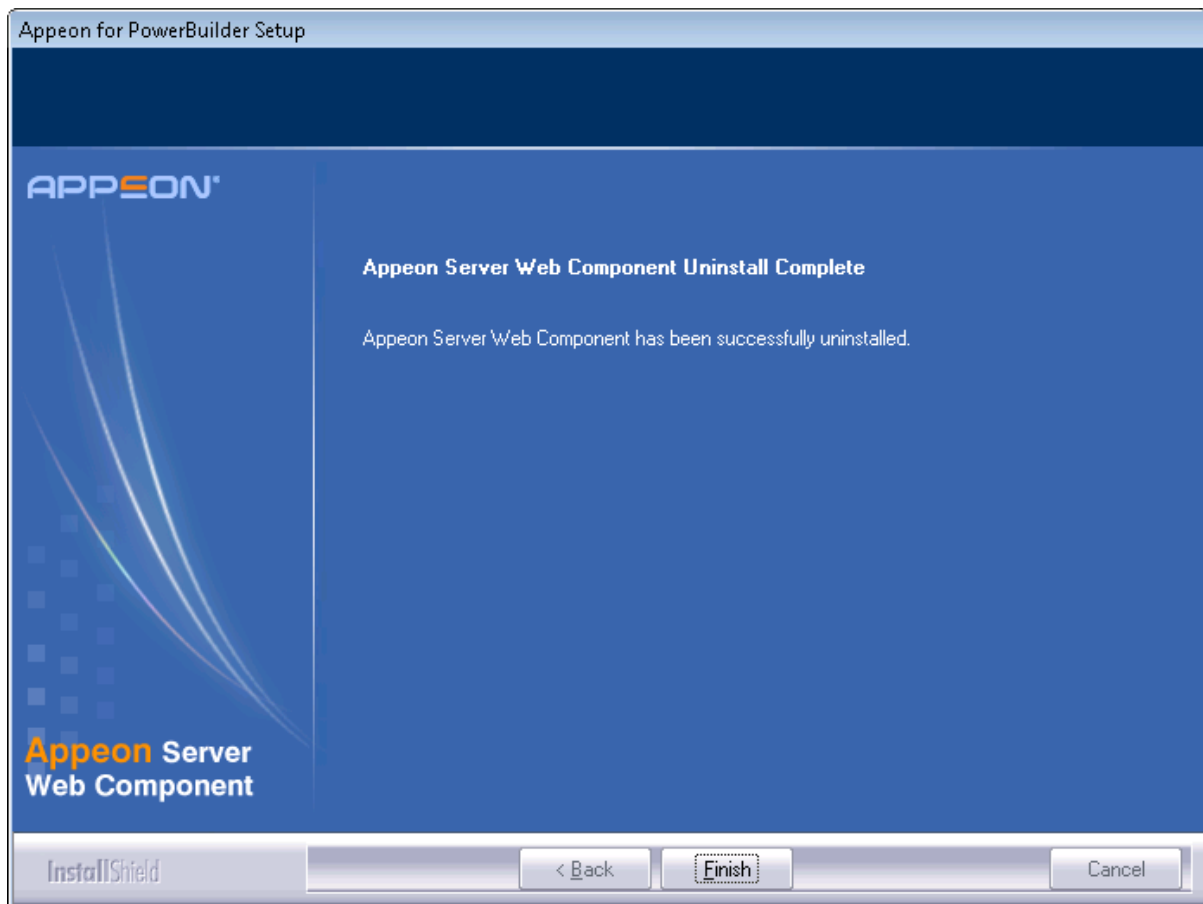
Figure 7-10: Confirm uninstall

Figure 7-11: Appeon Server Web Component uninstall process

Step 5 – Click *Finish* to exit (Figure 7-12).

Figure 7-12: Appeon Server Web Component uninstall complete

Step 6 – Use Windows Explorer to manually delete Appeon temporary Web files and folders (if they exist) under the Web root of the Web server where the Appeon Server Web Component was installed. Delete the following files where %WEB_ROOT% is the root path of the Web server, such as C:\Program Files\Apache Group\Apache\htdocs:

- %WEB_ROOT%\appeon_code_examples
- %WEB_ROOT%\sales_application_demo
- %WEB_ROOT%\appeon_acf_demo
- Any other folders corresponding to applications deployed by Appeon. These folders are typically identified by the application names assigned to the corresponding PowerBuilder applications.

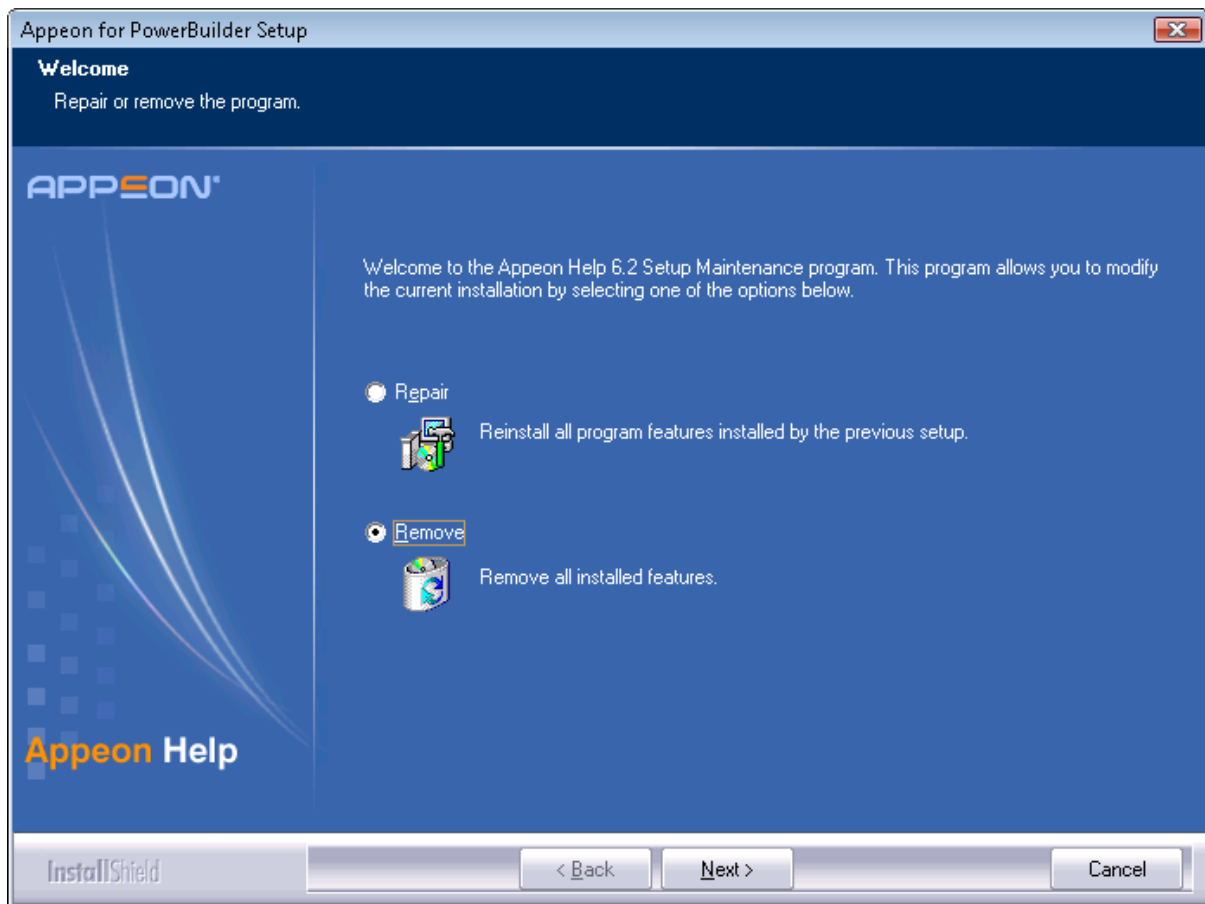
7.4.1 Web Component uninstall if multiple third-party Web servers are involved

Repeat the Web Component uninstall steps for each third-party Web server.

7.5 Uninstalling Appeon Help

Step 1 – Select Windows Start menu | Programs | Appeon 6.2 for PowerBuilder | Appeon Help | Uninstall Appeon Help to begin the uninstall process.

Step 2 – Choose *Remove* to delete all installed features. Click *Next* (Figure 7-13).

Figure 7-13: Welcome page

Step 3 – Confirm the removal of the Appeon Help. Click *OK* to uninstall (Figure 7-14 and Figure 7-15).

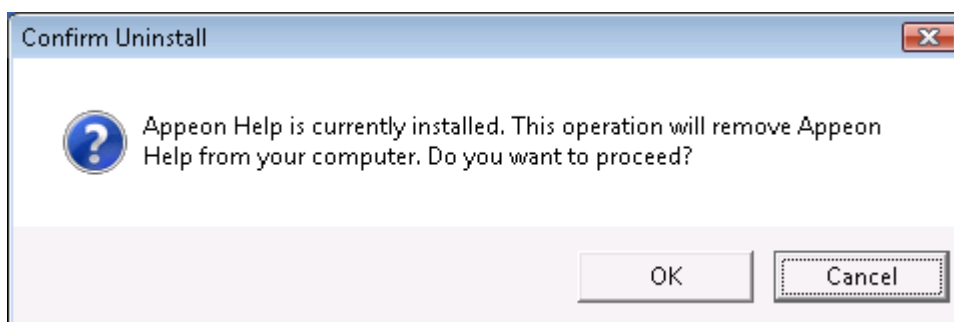
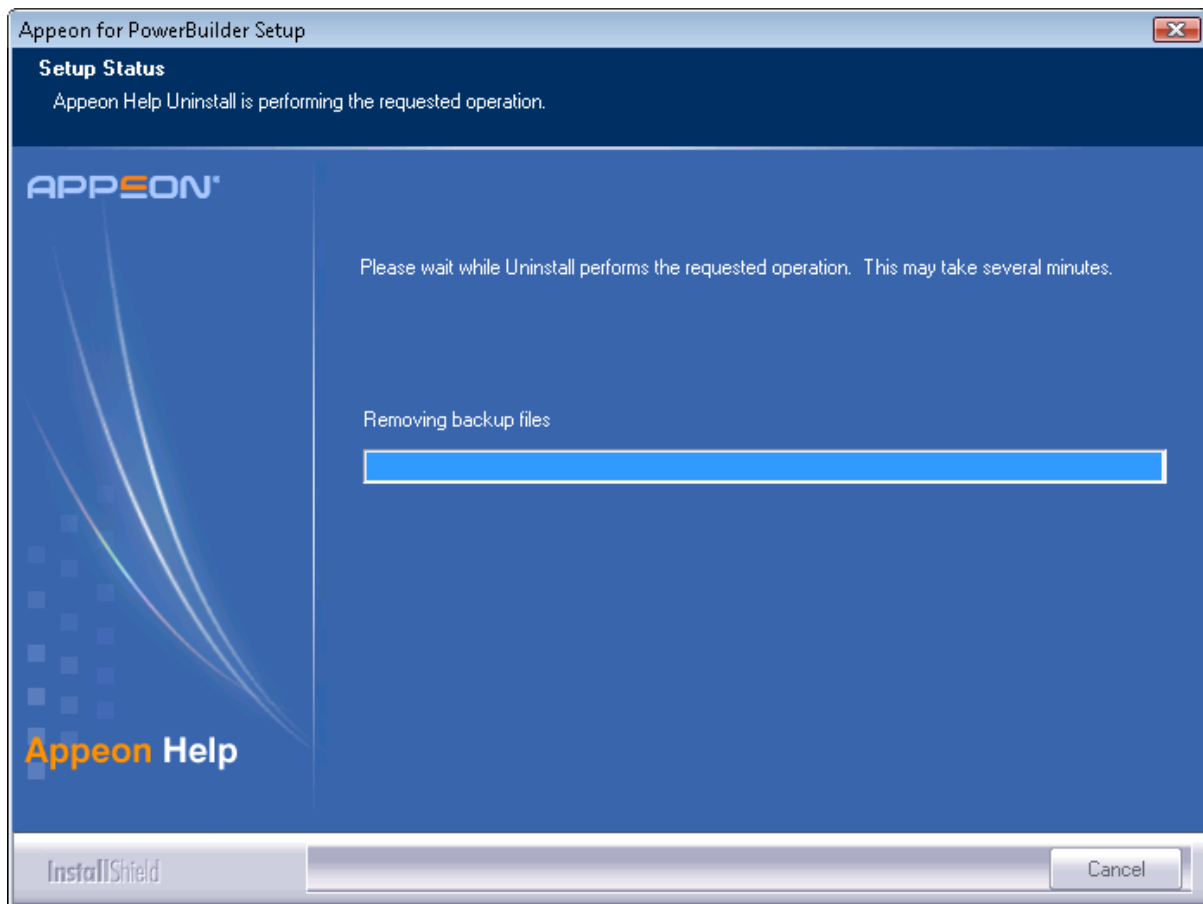
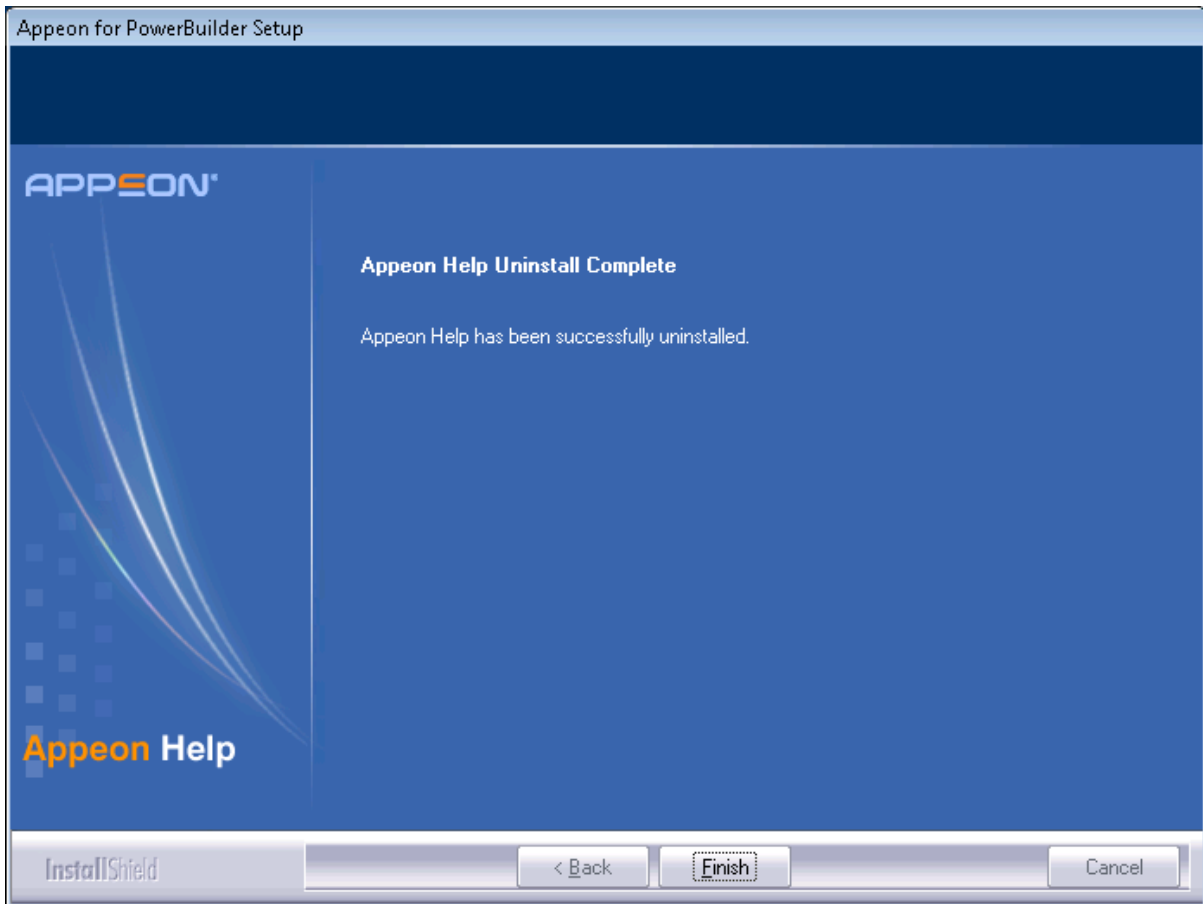
Figure 7-14: Confirm uninstall

Figure 7-15: Appeon Help uninstall process

Step 4 – Click *Finish* to exit (Figure 7-16).

Figure 7-16: Appeon Help uninstall complete



8 Technical Support

Technical support information is available at <http://www.sybase.com/support/>. Please click on the *Contact Support* link for help.

When logging a case, be prepared to provide the following files to Sybase Technical Support in order to aid in debugging:

Table 8-1: Files required for technical support

File Type	File Name
WebLogic configuration file	%WL_Domain%\setEnv.cmd %WL_Domain%\startWebLogic.cmd %WL_Domain%\config.xml %WL_Domain% indicates the domain path of the WebLogic server, for example, C:\bea\user_projects\domains\mydomain.
WebLogic log file	%WL_Domain%\mydomain.log and all of the %WL_Domain%\mydomain.log* file * indicates the sequence number of the log files.
Apeon Server configuration file	All files in the %WL_Domain%\apeon\repository\%instancename%\config folder.
Apeon Server log file	All files in the %WL_Domain%\apeon\repository\%instancename%\log folder.
Apeon Server Repository DB	%WL_Domain%\apeon\db\apeondb.script
Apeon license file	%WL_Domain%\apeon\license.apeon
Web server configuration file	httpd.conf
Web Page file	Web server path\application name>window name.html Web server path\application name>window name.js Web server path\application name\all DataWindows on window.xml Notes: 1) The Web server Web root of WebLogic is usually %WL_Domain%\applications. 2) If the window named includes inheritance, then also supply all ancestor HTML and JavaScript files.
PowerBuilder exported source code file	PowerBuilder application path\exported window name.srw PowerBuilder application path\exported DataWindow names.srd Note: Exported windows should include exported ancestor windows and exported ancestor user objects.

Index

A

- accessing Web applications problem, workaround
 - checking the Empty Temporary Internet Files folder when browser is closed option, 51
 - deleting the temporary Internet files manually, 51
- Add-on settings for IE 7, 50
- Apeon 6.2 new installation
 - Apeon Developer installation
 - installation instruction, 29
 - prerequisites, 29
 - Apeon Help installation, 38
 - Apeon Server Web Component installation, 35
 - installation instructions, 35
 - prerequisites, 35
- Apeon components, 5
 - Apeon Developer, 5
 - Apeon Help, 6
 - Apeon Server, 5
 - Apeon Server Web Component, 5
- Apeon Developer uninstalling, 58
- Apeon editions, 4
- Apeon Server Cluster, 46
- Apeon server requirements
 - hardware, 7
 - software, 7
 - third-party Web server, 7
- Apeon Server uninstalling, 61
- Apeon Server Web Component installation
 - verifying the installation, 38

ASE Chained mode, 56

ASE Chained Mode, 56

audience, 1

B

- before installing Apeon Developer
 - checking Developer PC, 29
 - shutting down certain Window programs, 29
 - uninstalling the previous Apeon version, 29
 - upgrading PowerBuilder, 29
- before installing Apeon Server Web Component to a third-party Web server
 - installing and configuring WebLogic Redirector Plug-in, 38
 - shutting down certain program, 35
 - using compatible Web server, 35
- before installing Apeon Server Web Component to a third-party Web server:, 35
- before installing Web component
 - preparations for installing Web component to multiple Web server, 35

C

- checking the version of JScript.dll, 56
- client PC requirements
 - hardware, 7
 - software, 7
- configuration for installation
 - disabling Static Page Caching, 56
- configurations for IE 7 under Windows Vista, 51
- Configuring Apeon Server Cluster, 46

D

Database server requirements, 8
 developer PC requirements
 hardware, 8
 software, 8
 dynamic DataWindows support, 56

H

how to use this book, 1

I

if you need help, 2
 Installation Requirements
 system language settings, 56
 installation scenarios
 Developer PC installation, 11
 remote Apeon Server installation,
 third-party Web server, 11
 remote Apeon Server installation,
 WebLogic HTTP server, 11
 installation scenarios
 Apeon Server Cluster, 12
 Installing to non- WebLogic Web servers,
 35
 Internet Explorer configuration
 Internet Explorer settings, 48
 security settings, 49
 Internet Explorer configuration
 caching recommendation, 50
 Internet Explorer configuration
 caching recommendation
 temporary Internet files folder,
 Advanced tab, 50
 Internet Explorer configuration
 caching recommendation
 temporary Internet files, General tab,
 50
 Internet Explorer configuration

caching recommendation

 disk space to use, 50

Internet Explorer configuration

 IE advanced settings, 51

J

JScript.dll, checking the version, 56

L

language setting

 regional options, your locale, 55

 system locale, 55

P

Post-Installation configuration, 47

R

related documents, 1

S

section 508 compliance, 3

security settings

 custom level settings, 49

 default level settings, 49

 security level and zone, 49

starting the installation, 13

Stored procedures provided for solving
 ASE Chained Mode issue, 57

supporting dynamic DataWindows, 56

system architecture, 3

system architecture

 Client PC, 4

system architecture

 Developer PC, 4

system architecture

 Web Server, 4

system architecture

 Application Server, 4

system architecture

Database Server, 4
system language settings, 55

T

technical support, 71

U

uninstalling Appeon Developer, 58
Uninstalling Appeon Help, 67
uninstalling Appeon Server, 61

uninstalling Web Component from
multiple third-party Web servers, 67
uninstalling Web component from non
WebLogic Web server, 35, 64

W

Web component uninstall from non
WebLogic Web server, 64
Windows account with administrator
rights, 48