



**Tutorial: Windows Mobile Object API  
Application Development**

---

**Sybase Unwired Platform 2.2**

**SP03**

DOCUMENT ID: DC01285-01-0223-01

LAST REVISED: April 2013

Copyright © 2013 by Sybase, Inc. All rights reserved.

This publication pertains to Sybase software and to any subsequent release until otherwise indicated in new editions or technical notes. Information in this document is subject to change without notice. The software described herein is furnished under a license agreement, and it may be used or copied only in accordance with the terms of that agreement.

Upgrades are provided only at regularly scheduled software release dates. No part of this publication may be reproduced, transmitted, or translated in any form or by any means, electronic, mechanical, manual, optical, or otherwise, without the prior written permission of Sybase, Inc.

Sybase trademarks can be viewed at the Sybase trademarks page at <http://www.sybase.com/detail?id=1011207>. Sybase and the marks listed are trademarks of Sybase, Inc. ® indicates registration in the United States of America.

SAP and other SAP products and services mentioned herein as well as their respective logos are trademarks or registered trademarks of SAP AG in Germany and in several other countries all over the world.

Java and all Java-based marks are trademarks or registered trademarks of Oracle and/or its affiliates in the U.S. and other countries.

Unicode and the Unicode Logo are registered trademarks of Unicode, Inc.

All other company and product names mentioned may be trademarks of the respective companies with which they are associated.

Use, duplication, or disclosure by the government is subject to the restrictions set forth in subparagraph (c)(1)(ii) of DFARS 52.227-7013 for the DOD and as set forth in FAR 52.227-19(a)-(d) for civilian agencies.

Sybase, Inc., One Sybase Drive, Dublin, CA 94568.

# Contents

<b>Sybase Unwired Platform Tutorials .....</b>	<b>1</b>
<b>Getting Started with Unwired Platform .....</b>	<b>3</b>
Installing Sybase Unwired Platform .....	3
Starting Sybase Unwired Platform Services .....	4
Starting Sybase Unwired WorkSpace .....	4
Connecting to Sybase Control Center .....	4
Learning Sybase Unwired WorkSpace Basics .....	5
<b>Developing a Windows Mobile Device Application .....</b>	<b>9</b>
Installing Microsoft Synchronization Software .....	10
Generating C# Object API Code .....	11
Creating the User Interface for the Windows Mobile Device Application .....	14
Creating the Customers Form .....	15
Creating the Customer Details Form .....	22
Creating the Main Program File .....	25
Deploying and Running the Device Application .....	26
<b>Learn More About Sybase Unwired Platform .....</b>	<b>31</b>
<b>Index .....</b>	<b>33</b>

# Contents

# Sybase Unwired Platform Tutorials

The Sybase® tutorials demonstrate how to develop, deploy, and test mobile business objects, device applications, online mobile applications (native OData and REST services based), and Hybrid App packages. You can also use the tutorials to demonstrate system functionality and train users.

- Learn mobile business object (MBO) basics, and use this tutorial as a foundation for the Object API application development tutorials:

- *Tutorial: Mobile Business Object Development*

---

**Note:** For all Object API tutorials, if you opt to use the Mobile Business Object example project instead of performing the Mobile Business Object Tutorial, you must deploy the mobile application project to Unwired Server as a prerequisite.

---

- Create native Object API mobile device applications:
  - *Tutorial: Android Object API Application Development*
  - *Tutorial: BlackBerry Object API Application Development*
  - *Tutorial: iOS Object API Application Development*
  - *Tutorial: Windows Object API Application Development*
  - *Tutorial: Windows Mobile Object API Application Development*
- Create a mobile business object, then develop a hybrid app package that uses it:
  - *Tutorial: Hybrid App Package Development*
- Create an OData mobile application with REST Services
  - *Tutorial: Android OData Application Development with REST Services*
  - *Tutorial: iOS OData Application Development with REST Services*



# Getting Started with Unwired Platform

Install and learn about Sybase Unwired Platform and its associated components.

Complete the following tasks for all tutorials, but you need to perform them only once.

**1. *Installing Sybase Unwired Platform***

Install Sybase Mobile SDK and Unwired Platform Runtime.

**2. *Starting Sybase Unwired Platform Services***

Start Unwired Server, Sybase Control Center, the sample database, the cache database (CDB), and other essential services.

**3. *Starting Sybase Unwired WorkSpace***

Start the development environment, where you can create mobile business objects (MBOs), manage enterprise information system (EIS) datasources and Unwired Server connections, develop Hybrid App applications (Hybrid Apps), and generate Object API code.

**4. *Connecting to Sybase Control Center***

Open Sybase Control Center to manage Unwired Server and its components.

**5. *Learning Sybase Unwired WorkSpace Basics***

Sybase Unwired WorkSpace features are well integrated in the Eclipse IDE. If you are unfamiliar with Eclipse, you can quickly learn the basic layout of Sybase Unwired WorkSpace and the location of online help.

## Installing Sybase Unwired Platform

---

Install Sybase Mobile SDK and Unwired Platform Runtime.

Before starting this tutorial, install all the requisite Unwired Platform components. See the Sybase Unwired Platform documentation at <http://sybooks.sybase.com>.

- *Release Bulletin*
- *Installation Guide for Sybase Mobile SDK*
- *Installation Guide for Runtime*

**1. Install these Unwired Platform Runtime components:**

- Data Tier (included with single-server installation)
- Unwired Server

**2. Install Mobile SDK, which includes:**

## Getting Started with Unwired Platform

- Development support for native Object API applications, HTML5/JS Hybrid Apps, and native OData SDK applications.
- Sybase Unwired WorkSpace, the Eclipse-based development environment for MBOs and Hybrid Apps.

## Starting Sybase Unwired Platform Services

---

Start Unwired Server, Sybase Control Center, the sample database, the cache database (CDB), and other essential services.

The way in which you start Unwired Platform Services depends on the options you selected during installation. You may need to manually start Unwired Platform Services.

Select **Start > (All) Programs > Sybase > Unwired Platform > Start Unwired Platform Services**.

The following services will be started:

- Sybase Control Center <Version>
- Sybase Unwired Cache DB
- Sybase Unwired SampleDB
- Sybase Unwired Server

Unwired Platform Services enable you to access the Unwired Platform runtime components and resources.

## Starting Sybase Unwired WorkSpace

---

Start the development environment, where you can create mobile business objects (MBOs), manage enterprise information system (EIS) datasources and Unwired Server connections, develop Hybrid App applications (Hybrid Apps), and generate Object API code.

Select **Start > Programs > Sybase > Unwired Platform > Sybase Unwired WorkSpace**.

The Sybase Unwired WorkSpace opens in the Mobile Development perspective. The Welcome page displays links to the product and information.

### Next

To read more about Sybase Unwired WorkSpace concepts and tasks, select **Help > Help Contents**.

## Connecting to Sybase Control Center

---

Open Sybase Control Center to manage Unwired Server and its components.

From Sybase Control Center, you can:

- View servers and their status



- Start and stop a server
- View server logs
- Deploy a mobile application package
- Register application connections
- Set role mappings
- Assign/Unassign a hybrid application to a device

For information on configuring, managing, and monitoring Unwired Server, click **Help > Online Documentation**.

1. Select **Start > Programs > Sybase > Sybase Control Center**.

---

**Note:** If Sybase Control Center does not launch, make sure that the Sybase Control Center service is started in the Windows Services dialog.

---

2. Log in by entering the credentials set during installation.

Sybase Control Center gives you access to the Unwired Platform administration features that you are authorized to use.

## Learning Sybase Unwired WorkSpace Basics

Sybase Unwired WorkSpace features are well integrated in the Eclipse IDE. If you are unfamiliar with Eclipse, you can quickly learn the basic layout of Sybase Unwired WorkSpace and the location of online help.

- To access the online help, select **Help > Help Contents**. Some documents are for Sybase Unwired Platform, while others are for the Eclipse development environment.
- The Welcome page provides links to useful information to get you started.
  - To close the Welcome page, click **X**.
  - Reopen the Welcome page by selecting **Help > Welcome**.
  - To learn about tasks you must perform, select the **Development Process** icon.
- In Sybase Unwired WorkSpace, look at the area (window or view) that you will use to access, create, define, and update mobile business objects (MBOs).

Window	Description
WorkSpace Navigator view	Use this view to create Mobile Application projects, and review and modify MBO-related properties.  This view displays mobile application project folders, each of which contains all project-related resources in subfolders, including MBOs, datasource references to which the MBOs are bound, personalization keys, and so on.

Window	Description
Enterprise Explorer view	A view that provides functionality to connect to various enterprise information systems (EIS), such as database servers, SAP® back ends, and Unwired Server.
Mobile Application Diagram	<p>The Mobile Application Diagram is a graphical editor where you create and define mobile business objects.</p> <p>Use the Mobile Application Diagram to create MBOs (including attributes and operations), then define relationships with other MBOs. You can:</p> <ul style="list-style-type: none"> <li>• Create MBOs in the Mobile Application Diagram using Palette icons and menu selections – either bind or defer binding to a datasource, when creating an MBO. For example, you may want to model your MBOs before creating the datasources to which they bind. This MBO development method is sometimes referred to as the top-down approach.</li> <li>• Drag and drop items from Enterprise Explorer to the Mobile Application Diagram to create the MBO – quickly creates the operations and attributes automatically based on the datasource artifact being dropped on the Mobile Application Diagram.</li> </ul> <p>Each new mobile application project generates an associated mobile application diagram.</p>
Palette	The Palette is accessed from the Mobile Application Diagram and provides controls, such as the ability to create MBOs, add attributes and operations, and define relationships, by dragging and dropping the corresponding icon onto the Mobile Application Diagram or existing MBO.
Properties view	Select an object in the Mobile Application Diagram to display and edit its properties in the Properties view. While you cannot create an MBO from the Properties view, most development and configuration is performed here.

<b>Window</b>	<b>Description</b>
Outline view	Displays an outline of the active file and lists structural elements. The contents are editor-specific.
Problems view	Displays validation errors or warnings that you may encounter in addition to errors in the Diagram editor and Properties view. Follow warning and error messages to adjust MBO properties and configurations to avoid problems, and use as a valuable source for collecting troubleshooting information when reporting issues to Customer Service and Support.
Error Log view	Displays error log information. This is a valuable source for collecting troubleshooting information.



# Developing a Windows Mobile Device Application

Generate code for the Windows Mobile platform based on the MBOs, add additional code to develop a Windows Mobile device application, and test its functionality.

## Prerequisites

---

**Note:** This tutorial was created using Sybase Unwired Platform 2.2 SP02, Microsoft .NET Compact Framework 3.5, Windows Mobile 6.5.3 DTK, and Visual Studio 2008, and executed on a Windows Mobile 6.5.3 Professional emulator. If you use different versions, some steps may vary.

---

- Complete the tasks in *Getting Started with Unwired Platform*.
- Install Visual Studio 2008.
- Install Microsoft .NET Compact Framework 3.5 from <http://www.microsoft.com/downloads/en/details.aspx?FamilyID=e3821449-3c6b-42f1-9fd9-0041345b3385&displaylang=en>, if it was not installed with Visual Studio.
- Either:
  - create the MBO project by completing *Tutorial: Mobile Business Object Development*, or
  - download and deploy the MBO SUP101 example project (complete project files) from the SAP® Community Network: <http://scn.sap.com/docs/DOC-8803>.

---

**Note:** If you upgrade Sybase Mobile SDK after completing the tutorial, you can convert the project to the current SDK by importing the earlier project into the Unwired Workspace and then accepting the confirmation prompt.

---

- (Optional) To use as a reference and copy source code when completing this tutorial, download the 2.2 SP02 version of the Windows Mobile SUP 101 example project (source code only) from the SAP® Community Network: <http://scn.sap.com/docs/DOC-8803>.

## Task

The device application communicates with the database mobile business objects that are deployed to Unwired Server.

### 1. *Installing Microsoft Synchronization Software*

Install and configure Microsoft synchronization software so you can deploy and run a mobile application on a Windows Mobile emulator.

### 2. *Generating C# Object API Code*

Generate Object API code for Windows Mobile devices.

### 3. *Creating the User Interface for the Windows Mobile Device Application*

Import the SUP101 project in to Visual Studio 2008, configure the project, then download the tutorial code snippets from SAP Community Network (SCN) so you can create the application user interface.

### 4. *Deploying and Running the Device Application*

Deploy the device application to a Windows Mobile 6.5.3 device emulator, and test its functionality.

---

## Installing Microsoft Synchronization Software

---

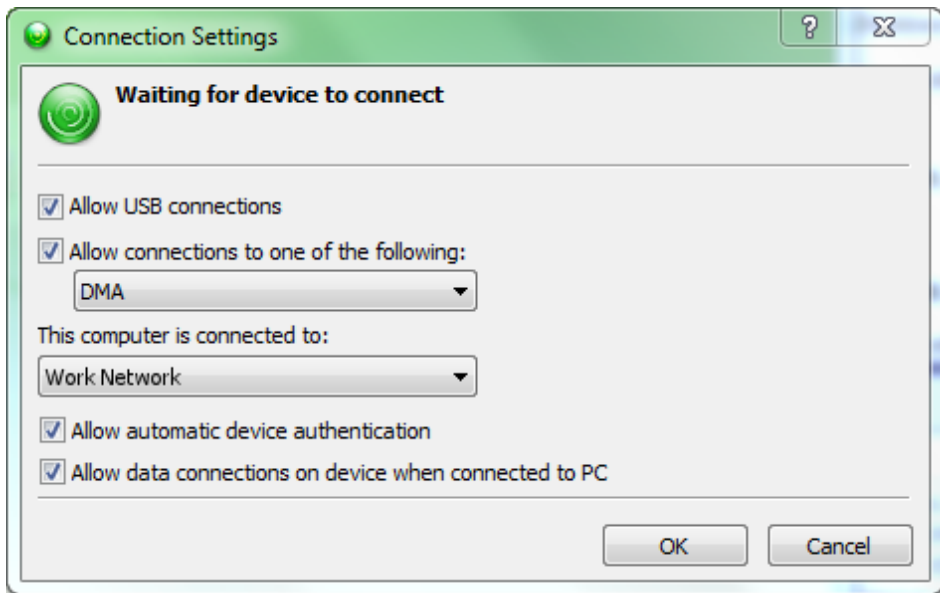
Install and configure Microsoft synchronization software so you can deploy and run a mobile application on a Windows Mobile emulator.

---

**Note:** These instructions describe how to install Windows Mobile Device Center for Windows 7, Vista or Windows Server 2008. If you are using Windows XP, install Microsoft ActiveSync from <http://www.microsoft.com/en-us/download/details.aspx?id=15> and follow Microsoft instructions for installing and using that software instead of this procedure.

---

1. Download Windows Mobile Device Center (WMDC) from <http://support.microsoft.com/kb/931937>.
2. Run the downloaded installation file.  
For example, double-click `drvupdate-amd64.exe` in Windows Explorer.
3. When the installation is complete, restart the system if prompted.
4. Start WMDC if it does not start automatically.  
For example, click **Start > Programs > Windows Mobile Device Center**.
5. In WMDC, click **Mobile Device Settings > Connection Settings**.
6. Select **Allow connections to one of the following**, make sure **DMA** is selected.
7. For the option **This computer is connected to**, select **Work Network**.



8. Click **OK**.

## Generating C# Object API Code

---

Generate Object API code for Windows Mobile devices.

### Prerequisites

1. Connect to both the sampledb database and Unwired Server. Code generation fails if the server-side (run-time) enterprise information system (EIS) data sources referenced by the MBOs in the project are not running and available to connect to when you generate object API code.
2. Switch to the Advanced developer profile to see advanced options in Sybase Unwired WorkSpace.

### Task

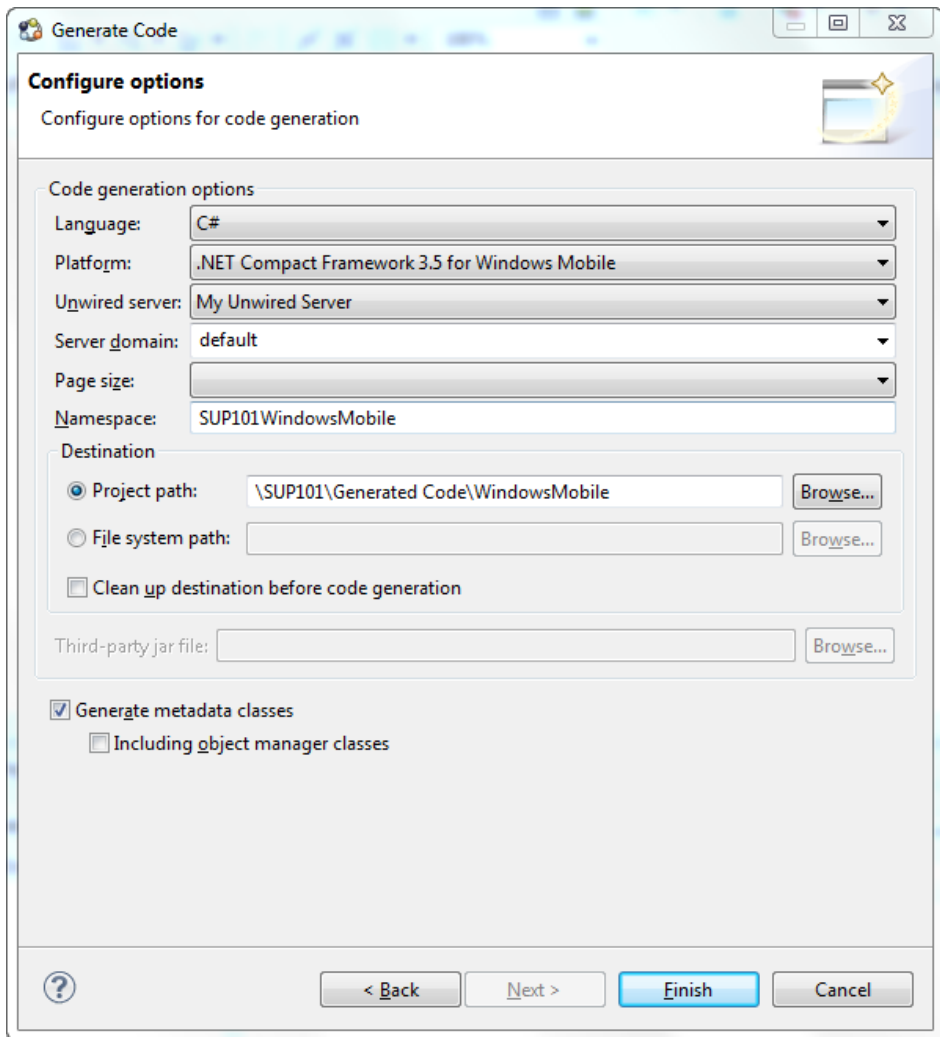
1. Start Sybase Unwired WorkSpace, using the same workspace location you used when you created the SUP101 project in the MBO tutorial.
2. In Sybase Unwired WorkSpace, open the **SUP101** mobile application project.  
In WorkSpace Navigator, right-click the **SUP101** folder and select **Open in Diagram Editor**.

## Developing a Windows Mobile Device Application

3. In WorkSpace Navigator, expand SUP101. Under Generated Code, add a folder named WindowsMobile.
4. Right-click anywhere in the SUP101 - Mobile Application Diagram and select **Generate Code**.
5. On the Code generation configuration screen, click **Next**.
6. Make sure the Customer and Sales\_order MBOs are selected, then click **Next**.
7. Enter the information for these configuration options:

Option	Description
Language	Select <b>C#</b> .
Platform	Select <b>.NET Compact Framework 3.5 for Windows Mobile</b> .
Unwired Server	Select <b>My Unwired Server</b> .
Server domain	Select <b>default</b> .
Page size	Select <blank> (replacing 1024).
Namespace	Enter SUP101WindowsMobile.
Destination	Enter \SUP101\Generated Code \WindowsMobile.
Generate metadata classes	Select for this tutorial.





**8. Click Finish.**

If you see a success notification dialog might appear, click **OK**.

In the Generated Code directory, you see `WindowsMobile\src`  
`\SUP101WindowsMobile`.

## Creating the User Interface for the Windows Mobile Device Application

---

Import the SUP101 project in to Visual Studio 2008, configure the project, then download the tutorial code snippets from SAP Community Network (SCN) so you can create the application user interface.

### Prerequisites

- Install Windows Mobile 6 Professional SDK Refresh from <http://www.microsoft.com/downloads/en/details.aspx?FamilyID=06111a3a-a651-4745-88ef-3d48091a390b&displaylang=en>.
- Install Windows Mobile 6.5.3 Professional DTK from <http://www.microsoft.com/en-us/download/details.aspx?id=5389>.
- Download and import the SUP101 Windows Mobile Project (2.2 SP02) example project from the SAP Community Network (SCN) at <http://scn.sap.com/docs/DOC-8803> to help create your project, and to later build the user interface.

### Task

The C# Object API code you generated from the MBO project is located in your Eclipse workspace under `..\SUP101\Generated Code\WindowsMobile`.

1. From WorkSpace Navigator, double-click `\SUP101\Generated Code\WindowsMobile\src\SUP101.csproj` to open the project in Visual Studio 2008.
2. Edit the project properties:
  - a) In Solution Explorer, under Solution 'SUP101' (1 project), right-click **SUP101**, then select **Change Target Platform**.
  - b) Select **Windows Mobile 6.5.3 Professional DTK** and click **OK**.
  - c) Click **Yes** to reopen the project after changing the platform.
  - d) Right-click **SUP101** again, then select **Properties**.
  - e) In the Application tab, set "Output type" to **Console Application**.
  - f) Select **File > Save All**, then save the solution as `SUP101.sln`.

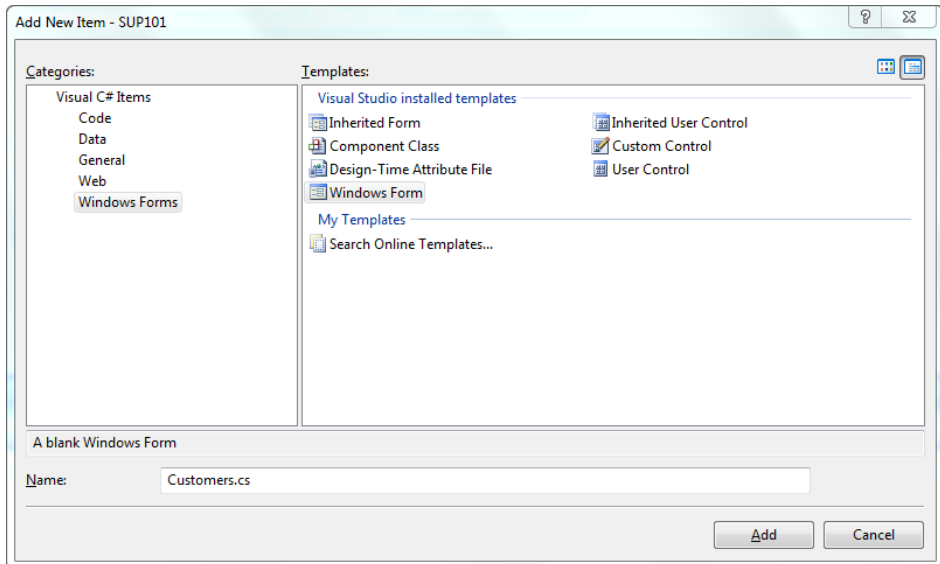
### See also

- *Deploying and Running the Device Application* on page 26

## Creating the Customers Form

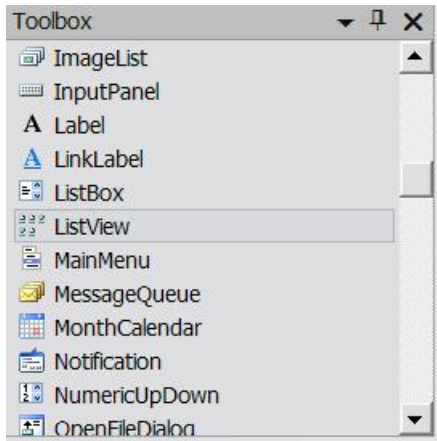
Create the user interface for the Customers form.

1. In Solution Explorer, under Solution 'SUP101' (1 project), right-click the **SUP101** project and select **Add > New Item**.
2. In the Add New Item Categories section, select **Windows Forms**. From the Templates section, select **Windows Form**. Enter `Customers.cs` as the form name and click **Add**.

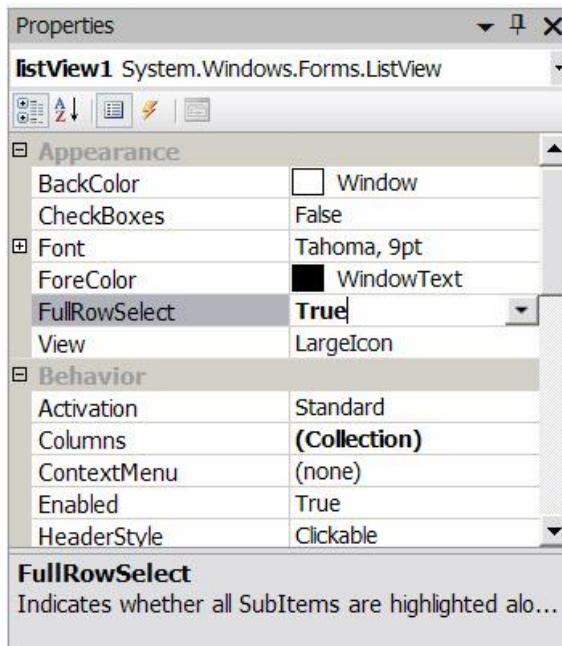


An empty form, **Customers**, appears on the Customers.cs [Design] tab.

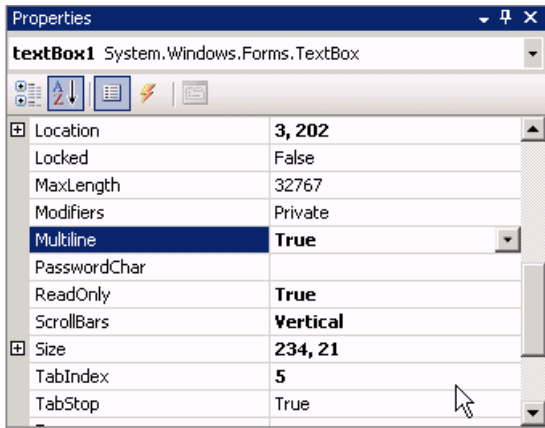
3. From the Toolbox, drag and drop three buttons onto the form.
4. Select each button and, in the Properties view, change the **Text** of the buttons to:
  - `button1` – `InitializeApplication`
  - `button2` – `LoadData`
  - `button3` – `Update Customer`
5. In the Toolbox, under Common Device Controls, drag **Listview** and drop it onto the Customers form.



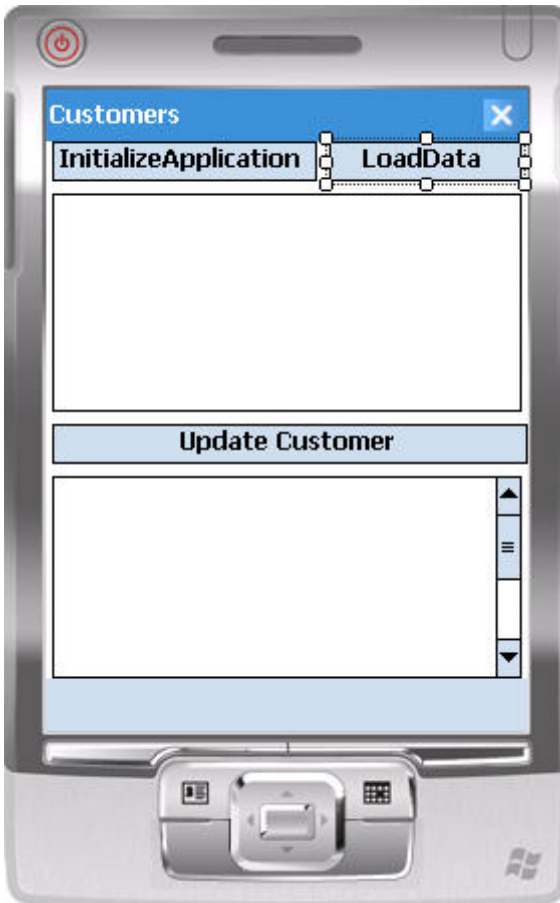
6. In the Toolbox, under Common Device Controls, drag **Textbox** and drop it onto the Customers form.
7. In the Customers form, click the **ListView** control, then in the Properties pane, set **FullRowSelect** to **True**.



8. In the Customers form, select the **Textbox**, then in the Properties pane, set these properties:
  - Multiline – True
  - ReadOnly – True
  - ScrollBars – Vertical



9. Arrange the controls on the Customers form so they look like this:



10. Save the Customers.cs form.
11. In Solution Explorer, in the SUP101 project, right-click **Customers.cs**, then select **View Code**.
12. Replace the code with the source code from the Customers.cs file you downloaded from the SAP Community Network (SCN) Web site, also provided below:  
 Edit the bolded code lines to match the Sybase Unwired Platform Admin login, password, and host you indicated during installation.

```

using System.Linq;
using System;

using System.Collections.Generic;
using System.ComponentModel;
using System.Data;
using System.Drawing;
using System.Text;
using System.Windows.Forms;
using SUP101WindowsMobile;
using Sybase.Mobile;
using Sybase.Persistence;
using Sybase.Collections;

namespace SUP101WindowsMobile
{
    public delegate void DelegateAddString(String s);
    public delegate void DelegateRefreshItem(long i);
    public partial class Customers : Form
    {
        private const String USERNAME = "supAdmin";
        private const String PASSWORD = "s3pAdmin";
        private const String HOST = "...";
        private const int PORT = 5001;
        private const int TIMEOUT = 600;
        private System.Collections.Generic.Dictionary<string,
long> IdToSK = new System.Collections.Generic.Dictionary<string,
long> ();
        internal static
System.Collections.Generic.Dictionary<long, int> SKToIndex = new
System.Collections.Generic.Dictionary<long, int> ();

        DelegateAddString m_DelegateAddString;

        DelegateRefreshItem m_refreshItem;

        public Customers ()
        {
            InitializeComponent ();
            m_DelegateAddString = new
DelegateAddString (this.AddString);
            m_refreshItem = new
DelegateRefreshItem (this.RefreshListItem);
        }

        internal void RefreshListItem (long sk)

```

```

    {
        int index = SKToIndex[sk];
        listView1.BeginUpdate();
        ListViewItem item = listView1.Items[index];
        String id = item.Text;

        Customer thisCustomer =
Customer.FindByPrimaryKey(Int32.Parse(id));
        item.SubItems[1].Text = thisCustomer.Fname;
        item.SubItems[2].Text = thisCustomer.Lname;
        listView1.EndUpdate();
    }

    private void AddString(String s)
    {
        textBox1.Text += s + "\r\n";
        textBox1.SelectionStart = textBox1.Text.Length;
        textBox1.ScrollToCaret();
        textBox1.Refresh();
    }

    private void InitializeApplication_Click(object sender,
EventArgs e)
    {
        Sybase.Mobile.Application app =
Sybase.Mobile.Application.GetInstance();
        app.ApplicationIdentifier = "SUP101";
        MyCallbackHandler.textBox1 = textBox1;
        SUP101DB.RegisterCallbackHandler(new
MyCallbackHandler());
        SUP101DB.SetApplication(app);
        SUP101DB.GetSynchronizationProfile().ServerName = HOST;

        ConnectionProperties connProps =
app.ConnectionProperties;
        LoginCredentials loginCredentials = new
LoginCredentials(USERNAME, PASSWORD);

        connProps.LoginCredentials = loginCredentials;
        connProps.ServerName = HOST;
        connProps.PortNumber = PORT;

        if (app.RegistrationStatus !=
RegistrationStatus.REGISTERED)
        {
            AddString("Application registering ... ");
            app.RegisterApplication(TIMEOUT);
            AddString("Application registered");
        }
        else
        {
            AddString("Connecting to server ...");
            app.StartConnection(TIMEOUT);
            AddString("Connected to server");
        }
    }

```

```
        if (!SUP101DB.IsSynchronized("default"))
        {
            SUP101DB.DisableChangeLog();
            AddString("Package synchronizing ...");
            SUP101DB.Synchronize(); // Initial Synchronize

            ISynchronizationGroup sg =
SUP101DB.GetSynchronizationGroup("default");
            sg.EnableSIS = true;
            sg.Save();
            SUP101DB.Synchronize();
            AddString("Package synchronized");
        }
        SUP101DB.EnableChangeLog();
        AddListView();
    }

    private void LoadData_Click(object sender, EventArgs e)
    {
        if
(Sybase.Mobile.Application.GetInstance().RegistrationStatus ==
RegistrationStatus.REGISTERED)
        {
            Cursor.Current = Cursors.WaitCursor;
            AddString("Loading data from database ...");
            AddDataToListView();
            Cursor.Current = Cursors.Default;
        }
        else
        {
            AddString("Application is not initialized!");
        }
    }

    private void AddListView()
    {
        this.listView1.Clear();
        listView1.Columns.Add("Id", listView1.Width / 4,
HorizontalAlignment.Left);
        listView1.Columns.Add("First Name", listView1.Width /
3, HorizontalAlignment.Center);
        listView1.Columns.Add("Last Name", listView1.Width / 3,
HorizontalAlignment.Right);
        listView1.View = View.Details;
        listView1.FullRowSelect = true;
    }

    private void AddDataToListView()
    {
        this.listView1.Clear();
        listView1.Columns.Add("Id", listView1.Width / 4,
HorizontalAlignment.Left);
        listView1.Columns.Add("First Name", listView1.Width /
3, HorizontalAlignment.Center);
        listView1.Columns.Add("Last Name", listView1.Width / 3,
HorizontalAlignment.Right);
    }
}
```



```

        listView1.View = View.Details;
        listView1.FullRowSelect = true;

        Query query = new Query();
        query.Select("x.fname, x.lname, x.surrogateKey, x.id");
        query.From("Customer", "x");
        query.OrderBy("id", SortOrder.ASCENDING);

        int index = 0;
        QueryResultSet rs = SUP101DB.ExecuteQuery(query);
        while (rs.Next())
        {
            String fname = rs.GetString(1);
            String lname = rs.GetString(2);
            long sk = rs.GetLong(3);
            String id = rs.GetString(4);

            ListViewItem item = new ListViewItem(id);
            item.SubItems.Add(fname);
            item.SubItems.Add(lname);
            listView1.Items.Add(item);

            IdToSK.Add(id, sk);
            SKToIndex.Add(sk, index++);
        }
    }
    private void update_Click(object sender, EventArgs e)
    {
        if (listView1.FocusedItem != null)
        {
            Program.setCustomer(listView1.FocusedItem.Text);
            Program.getForm2().Visible = true;
            Program.getForm1().Visible = false;
        }
        else
            MessageBox.Show("Please select a row");
    }
    private void Send_Click(object sender, EventArgs e)
    {
        Customer.SubmitPendingOperations();
    }
    public class MyCallbackHandler :
    Sybase.Persistence.DefaultCallbackHandler
    {
        public static TextBox textBox1 = new TextBox();

        private void invokeDelegate(long i)
        {
            Customers f = Program.getForm1();
            f.Invoke(f.m_refreshItem, new Object[] { i });
        }

        public override SynchronizationAction
        OnSynchronize(GenericList<ISynchronizationGroup> groups,

```

```
SynchronizationContext context)
{
    if (context.Status ==
SynchronizationStatus.FINISHING || context.Status ==
SynchronizationStatus.ASYNC_REPLAY_UPLOADED)
    {
        Query query = new Query();
        GenericList<IChangeLog> changeLogs =
SUP101DB.GetChangeLogs(query);
        foreach (IChangeLog changeLog in changeLogs)
        {
            if (changeLog.EntityType ==
EntityType.Customer)
            {
                invokeDelegate(changeLog.SurrogateKey);
            }
        }
        return SynchronizationAction.CONTINUE;
    }
}
}
```

13. Click the **Customers.cs[Design]** tab to return to the Customers form design view to add event handlers to the buttons.
  - a) Click the **InitializeApplication** button on the form.
  - b) In the Properties view for the button, click the **Event** icon (lightning bolt).
  - c) Next to Click, select **InitializeApplication\_Click**.
  - d) Repeat these steps for each button, selecting these events for each Click data binding:
    - LoadData – **LoadData\_Click**
    - Update Customer – **update\_Click**
14. Save your changes.

### Creating the Customer Details Form

Create the user interface for the Customer\_Details form.

1. Add another Windows Form, named `Customer_Details.cs`, to the project.
2. From the Toolbox, drag and drop three labels onto the Customer\_Details form.
3. Align the labels on the left side of the form.

In the Properties view, in the Text field, rename the labels `Cust ID`, `First Name`, and `Last Name`.

4. From the Toolbox, drag and drop three text boxes onto the Customer\_Details form and align them to the right of each of the three labels.

5. From the Toolbox, drag and drop one button from Common Device Controls onto the Customer\_Details form below the labels and text boxes.
6. In the Properties view, in the Text field, rename the button Submit.
7. Save the Customer\_Details.cs form.
8. In Solution Explorer, in the SUP101 project, right-click **Customer\_Details.cs**, then select **View Code**.
9. Replace the existing code with the code from the Customer\_Details.cs file you downloaded from the SAP Community Network (SCN) Web site, also provided below:

```
using System;

using System.Collections.Generic;
using System.ComponentModel;
using System.Data;
using System.Drawing;
using System.Text;
using System.Windows.Forms;

using SUP101WindowsMobile;
using Sybase.Collections;
using Sybase.Persistence;

namespace SUP101WindowsMobile
{
    public partial class Customer_Details : Form
    {
        Customer thisCustomer;
        public Customer_Details()
        {
            InitializeComponent();
        }

        private void submit_Click(object sender, EventArgs e)
        {
            thisCustomer.Fname = textBox2.Text;
            thisCustomer.Lname = textBox3.Text;
            thisCustomer.Save();
            thisCustomer.SubmitPending();

            ISynchronizationGroup sg =
SUP101DB.GetSynchronizationGroup("default");
            GenericList<ISynchronizationGroup> syncGroups = new
GenericList<ISynchronizationGroup>();
            syncGroups.Add(sg);
            SUP101DB.BeginSynchronize(syncGroups, "");

            Program.getForm1().Visible = true;

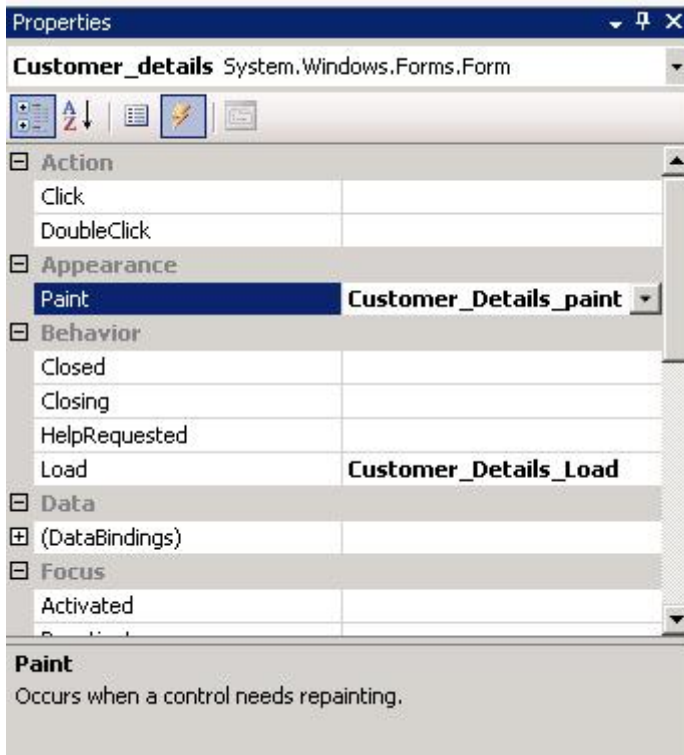
Program.getForm1().RefreshListItem(thisCustomer.SurrogateKey);
            Program.getForm2().Visible = false;
        }
        private void AddDataToForm()
        {
```

```
        textBox1.Text = Program.getCustomer();
        int id = Int32.Parse(Program.getCustomer());
        thisCustomer = Customer.FindByPrimaryKey(id);
        textBox2.Text = thisCustomer.Fname;
        textBox3.Text = thisCustomer.Lname;
    }
    private void Customer_Details_Load(object sender, EventArgs
e)
    {
        AddDataToForm();
    }
    private void Customer_Details_paint(object sender,
PaintEventArgs e)
    {
        AddDataToForm();
    }
}
```

**10.** In the `Customer_Details.cs` [Design] view, click the **Submit** button. In the Properties view, click the **Event** icon (lightning bolt), and set the Click property to `submit_Click`.

**11.** Add events to `Customer_Details.cs`:

- a) Click the **Customer\_Details.cs [Design]** tab.
- b) In Properties view, select **Customer\_Details System.Windows.Forms.Form**. from the drop-down list at the top of the view.
- c) Click the **Events** icon (lightning bolt).
- d) In Load, add the **Customer\_Details\_Load** event.
- e) In Paint, add the **Customer\_Details\_paint** event.



12. Save your changes.

## Creating the Main Program File

Create the `Program.cs` file, which is the main entry point for the application.

1. In the Solution Explorer, right-click **SUP101**, then select **Add > New Item**.
2. In Categories, select **Code** and in Templates, select **Code File**.
3. Name the code file `Program.cs`, then click **Add**.  
An empty code tab titled `Program.cs` opens.
4. Copy the code from the `Program.cs` file you downloaded from the SAP Community Network (SCN) Web site, also provided below, into the `Program.cs` tab.

```
using System;
using SUP101WindowsMobile;
using System.Windows.Forms;

namespace SUP101WindowsMobile
{
    static class Program
    {
        /// <summary>
        /// The main entry point for the application.
    }
}
```

## Developing a Windows Mobile Device Application

```
Form1();  
private static Customers _form1 = new Customers();  
private static Customer_Details _form2 = new  
Customer_Details();  
private static string _custid;  
public static string getCustomer()  
{  
    return _custid;  
}  
public static void setCustomer(string custid)  
{  
    _custid = custid;  
}  
public static Customers getForm1()  
{  
    return _form1;  
}  
public static Customer_Details getForm2()  
{  
    return _form2;  
}  
static void Main(string[] args)  
{  
    Application.Run(_form1);  
}  
}
```

5. Save your changes.
6. Build the project by pressing **Ctrl+Shift+B**.

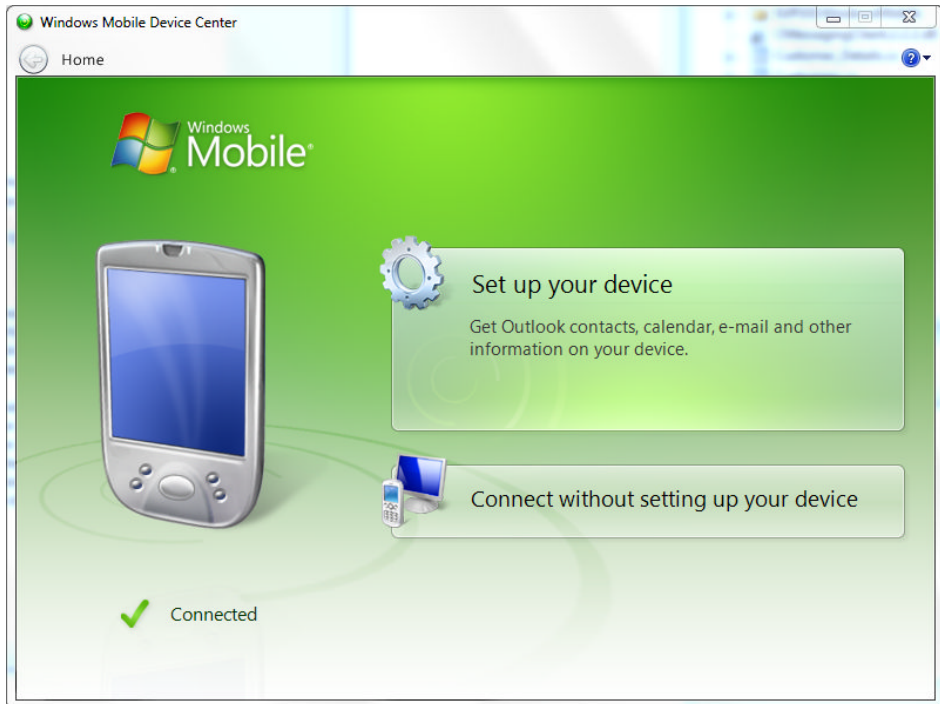
## Deploying and Running the Device Application

---

Deploy the device application to a Windows Mobile 6.5.3 device emulator, and test its functionality.

1. In Visual Studio, choose **Tools > Device Emulator Manager**.
2. Scroll down to **Windows Mobile 6.5.3 Professional Emulator**, right-click, and select **Connect**.  
The Windows Mobile emulator launches.
3. In Device Emulator Manager, right-click **Windows Mobile 6.5.3 Professional Emulator** again and select **Cradle**.

Windows Mobile Device Center launches and connects automatically.

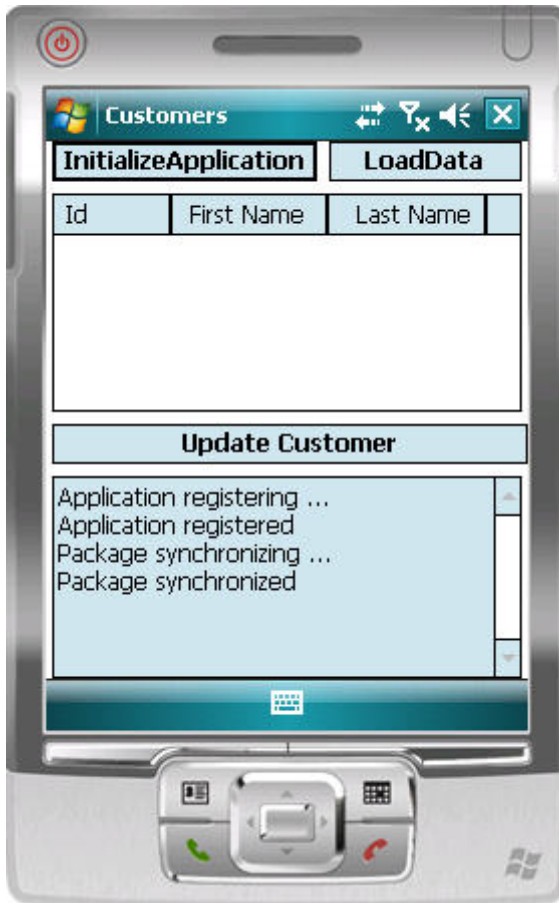


4. In the Solution Explorer of Visual Studio, right-click the **SUP101** project and select **Deploy**.
5. If you see the Deploy SUP101 dialog, select **Windows Mobile 6.5.3 Professional Emulator** and click **Deploy**.
6. In the Windows Mobile emulator, select **Start**.
7. Select **File Explorer > My Device > Program Files**.
8. Open the **sup101** folder.
9. Click **SUP101** to start the application.
10. Click **InitializeApplication**.

Inside InitializeApplication, the application is registering and synchronizing data from the backend server. The initialization process also enables Target Change Notification by:

```
ISynchronizationGroup sg =
SUP101DB.GetSynchronizationGroup("default");
sg.EnableSIS = true;
sg.Save();
```

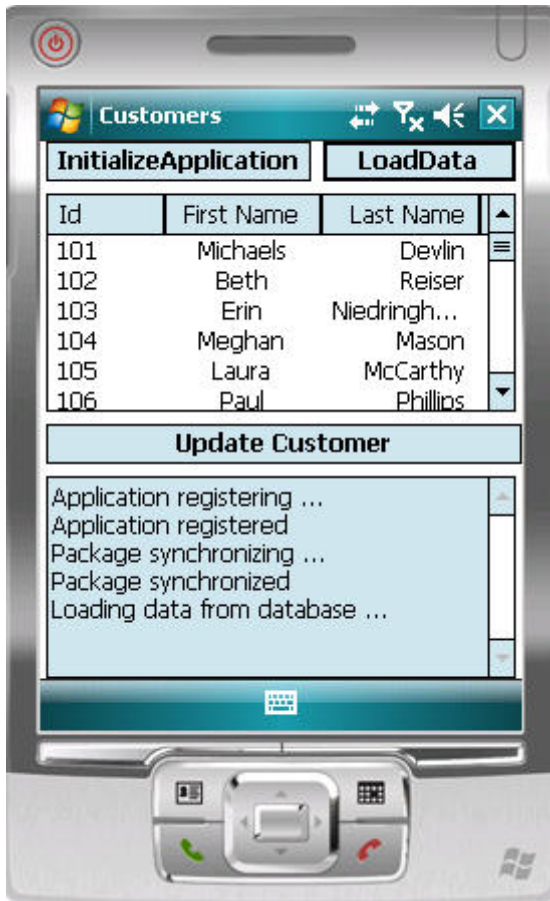
A message displays in the output box below when complete.



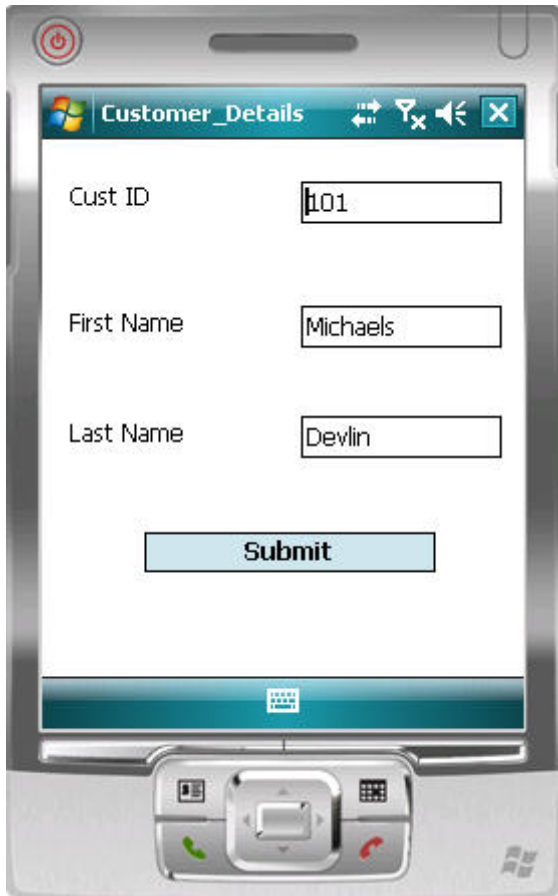
**11.** Click **LoadData** to populate Customer data in the list view.

To improve performance, `SUP101DB.ExecuteQuery` queries the customer list, selecting only required columns (fname, lname...) instead of the entire customer object.





12. Highlight a customer record and click **Update Customer**.



13. Make changes, then click **Submit** to return to the Customers List screen.

Inside Submit, customer information is updated and `SUP101DB.beginSynchronize` is called in the background to avoid blocking the user interface.

**See also**

- *Creating the User Interface for the Windows Mobile Device Application* on page 14

# Learn More About Sybase Unwired Platform

Once you have finished, try some of the other samples or tutorials, or refer to other development documents in the Sybase Unwired Platform documentation set.

Check the Sybase® Product Documentation Web site regularly for updates: <http://sybooks.sybase.com/sybooks/sybooks.xhtml?id=1289&c=firsttab&a=0&p=categories>, then navigate to the most current version.

## *Tutorials*

Try out some of the other getting started tutorials available on the Product Documentation Web site to get a broad view of the development tools available to you.

## *Example Projects*

An example project contains source code for its associated tutorial. It does not contain the completed tutorial project. Download example projects from the SAP® Community Network (SCN) at <http://scn.sap.com/docs/DOC-8803>.

## *Samples*

Sample applications are fully developed, working applications that demonstrate the features and capabilities of Sybase Unwired Platform.

Check the SAP® Development Network (SDN) Web site regularly for new and updated samples: <https://cw.sdn.sap.com/cw/groups/sup-apps>.

## *Online Help*

See the online help that is installed with the product, or available from the Product Documentation Web site.

## *Developer Guides*

Learn best practices for architecting and building device applications:

- *Mobile Data Models: Using Data Orchestration Engine* – provides information about using Sybase Unwired Platform features to create DOE-based applications.
- *Mobile Data Models: Using Mobile Business Objects* – provides information about developing mobile business objects (MBOs) to fully maximize their potential.

Use the appropriate API to create device applications:

- *Developer Guide: Android Object API Applications*
- *Developer Guide: BlackBerry Object API Applications*
- *Developer Guide: iOS Object API Applications*
- *Developer Guide: Windows and Windows Mobile Object API Applications*

## Learn More About Sybase Unwired Platform

- *Developer Guide: Hybrid Apps*

Customize and automate:

- *Developer Guide: Unwired Server Runtime > Management API* – customize and automate system administration features.

Javadoc and HeaderDoc are also available in the installation directory.

# Index

## A

ActiveSync, installing and configuring 10

## C

C# object API code generation 11

Customer\_details form 22

Customers form 15

## E

example projects 1

## H

Hybrid App package tutorial 1

## M

Microsoft .NET Compact Framework 3.5 9

Microsoft ActiveSync, installing and configuring  
10

mobile business object tutorial 1

## O

Object API tutorials 1

## P

program.cs 25

## S

samples

    downloading 31

Sybase Control Center

    connecting to 4

Sybase Mobile SDK

    installing 3

Sybase Unwired Platform

    documentation resources 31

    getting started 3

    installing 3

Sybase Unwired WorkSpace

    basics 5

    how to access online help 5

    starting 4

Sybase Unwired WorkSpace basics 5

synchronization software 10

## T

troubleshooting information 5

tutorials 1

    downloading 31

## U

Unwired Platform Runtime

    installing 3

Unwired Platform services 4

## V

Visual Studio 2008 9

## W

Windows Mobile 6.5.3 Professional Developer Tool  
Kit 9

