

New Features Guide

Appeon® 6.0 for PowerBuilder®

DOCUMENT ID: DC20033-01-0600-03

LAST REVISED: July 2008

Copyright © 2008 by Appeon Corporation. All rights reserved.

This publication pertains to Appeon software and to any subsequent release until otherwise indicated in new editions or technical notes. Information in this document is subject to change without notice. The software described herein is furnished under a license agreement, and it may be used or copied only in accordance with the terms of that agreement.

No part of this publication may be reproduced, transmitted, or translated in any form or by any means, electronic, mechanical, manual, optical, or otherwise, without the prior written permission of Appeon Corporation.

Appeon, the Appeon logo, Appeon Developer, Appeon Enterprise Manager, AEM, Appeon Server and Appeon Server Web Component are trademarks or registered trademarks of Appeon Corporation.

Sybase, Adaptive Server Anywhere, Adaptive Server Enterprise, iAnywhere and PowerBuilder, are trademarks or registered trademarks of Sybase, Inc.

Java, JDBC and JDK are trademarks or registered trademarks of Sun, Inc.

All other company and product names used herein may be trademarks or registered trademarks of their respective companies.

Use, duplication, or disclosure by the government is subject to the restrictions set forth in subparagraph (c)(1)(ii) of DFARS 52.227-7013 for the DOD and as set forth in FAR 52.227-19(a)-(d) for civilian agencies.

Appeon Corporation, 1/F, Shell Industrial Building, 12 Lee Chung Street, Chai Wan District, Hong Kong.

Contents

1 About This Book	1
1.1 Audience	1
1.2 How to use this book	1
1.3 Related documents	1
1.4 If you need help.....	2
2 New Supported PowerBuilder Features.....	3
2.1 Overview	3
2.2 PowerBuilder 11 support	3
2.3 New DataWindow features.....	3
2.4 New system objects and controls	3
2.5 New Database support.....	3
2.6 Other database features support.....	3
3 New Installation Features.....	4
3.1 Different Appeon Server installation	4
3.2 System requirements	4
3.2.1 System requirements for EAServer.....	4
3.2.2 System requirements for .NET*	4
3.2.3 System requirements for WebLogic	5
3.2.4 System requirements for Websphere.....	5
4 New Appeon Developer Features	6
4.1 Pure-JavaScript deployment removed	6
4.2 Trace Configure and Debug Configure removed.....	6
4.3 Supports deployment to EAServer or .NET IIS using one Appeon Developer	6
4.4 New Connection Cache profile (EAServer only).....	6
4.5 Appeon Developer Toolbar Register Tool	6
4.6 New Runtime settings	7
4.7 New setting for ASE database profile.....	8
4.8 New Setting for Appeon Server profile	9
4.9 Deployment Profile new feature	10
4.10 Enhanced deployment log.....	10
5 New Appeon Enterprise Manager Features	11
5.1 New Decimal Precision tool.....	11
5.2 Application Properties Display tool removed	11
5.3 Appeon Server Status Monitor not available for EAServer 6.x or .NET	11
5.4 Connection Cache tool not available for EAServer 6.x.....	11
5.5 Connection Cache tool supports Informix (for .NET)	12
5.6 Enhanced LDAP tool	12
6 Other New Features	13
6.1 New Features in Appeon Workarounds PBL.....	13

6.2 New Demo feature	13
Index.....	14

1 About This Book

1.1 Audience

This book introduces new features added in Appeon 6.0 for PowerBuilder.

1.2 How to use this book

There are six chapters in this book.

Chapter 1: About This Book

A general description of this book

Chapter 2: New Supported PowerBuilder Features

Describes PowerBuilder supported features that have been added in Appeon 6.0

Chapter 3: New Installation Features

Describes the new Appeon installation environment and features added in Appeon 6.0

Chapter 4: New Appeon Developer Features

Describes new features of Appeon Developer added in Appeon 6.0

Chapter 5: New Appeon Enterprise Manager Features

Describes new features of Appeon Enterprise Manger added in Appeon 6.0

Chapter 6: Other New Features

Describes other new features added in Appeon 6.0

1.3 Related documents

Appeon provides the following user documents to assist you in understanding Appeon for PowerBuilder and its capabilities:

- *Appeon Demo Applications Tutorial*:

Introduces Appeon's demo applications; including the Appeon Sales Application Demo, Appeon Code Examples, and the Appeon ACF Demo, which show Appeon's capabilities in converting PowerBuilder applications to the Web.

- *Appeon Developer User Guide* (or *Working with Appeon Developer Toolbar*)

Provides instructions on how to use the Appeon Developer toolbar in Appeon 6.0.

Working with Appeon Developer Toolbar is an HTML version of the *Appeon Developer User Guide*.

- *Appeon Server Configuration Guide*

Provides instructions on how to configure Appeon Server Status Monitor, establish connections between Appeon Server and Database Server, and configure AEM for maintaining Appeon Server and Appeon deployed Web applications.

- *Appeon Supported Features Guide* (or *Appeon Features Help*):

Provides a detailed list of supported PowerBuilder features, which can be converted to the Web with Apppeon 6.0 using the Apppeon Xcelerator deployment option, as well as a list of unsupported features.

Apppeon Features Help is an HTML version of the *Apppeon Supported Features Guide*

- *Apppeon Installation Guide*:

Provides instructions for installing *Apppeon for PowerBuilder*.

- *Apppeon Migration Guide*:

A process-oriented guide that illustrates the Apppeon Web migration procedure and various topics related to steps in the procedure, and includes a tutorial that walks the user through the entire process of deploying a small PowerBuilder application to the Web.

- *Apppeon Performance Tuning Guide*:

Provides instructions on modifying a PowerBuilder application to achieve better performance from the corresponding Web application.

- *Apppeon Troubleshooting Guide*:

Provides information on troubleshooting issues; covering topics such as product installation, Web deployment, AEM, and Web application runtime.

- *Introduction to Apppeon*:

Guides you through all the documents included in Apppeon 6.0 for PowerBuilder.

- *New Features Guide* (or *What's New in Apppeon*):

Introduces new features and changes in Apppeon 6.0 for PowerBuilder.

What's New in Apppeon is an HTML version of the *New Features Guide*.

1.4 If you need help

Each Sybase installation that includes the purchase of a support contract provides for one or more designated people within your organization to be authorized to contact Sybase Technical Support or an Authorized Sybase Support Partner. If you have any questions about this product or need assistance during the installation process, ask the designated person to contact Sybase Technical Support or an Authorized Sybase Support Partner according to your support contract. You may access the Technical Support Web site at:

<http://www.sybase.com/support>).

2 New Supported PowerBuilder Features

2.1 Overview

Appeon 6.0 has added support for many important features since Appeon 5.0. Web migration using Appeon for PowerBuilder has become much simpler with the newly added features.

2.2 PowerBuilder 11 support

Appeon 6.0 supports PowerBuilder 9, 10, 10.5, and 11 applications.

2.3 New DataWindow features

- TreeView DataWindow
- DataWindow properties: CollapsedTreeNodeIconName, DefaultExpandToLevel, ExpandedTreeNodeIconName, Indent, Level, SelectNodeByMouse, ShowNodeConnectLines, ShowLeafNodeConnectLines, ShowTreeNodeIcon, StateIconAlignMode, and TreeNodeIconName.
- DataWindow functions: Collapse, CollapseAll, CollapseAllChildren, CollapseLevel, Expand, ExpandAll, ExpandAllChildren, ExpandLevel, IsExpanded, and SelectTreeNode.

2.4 New system objects and controls

- DatePicker control
- MonthCalender control

2.5 New Database support

- Sybase ASA 10.0 with iAnywhere JDBC driver and jConnect JDBC driver
- Sybase IQ 12.7.x with jConnect JDBC driver
- Informix 10.x.

2.6 Other database features support

- RollBack to Save point in Oracle
- For Update No Wait statement in Oracle

3 New Installation Features

3.1 Different Appeon Server installation

You can select installing Appeon Server to any of the following application servers or platform using one Appeon Installation program:

- EAServer
- Weblogic
- WespHERE
- IIS using .NET framework*

3.2 System requirements

3.2.1 System requirements for EAServer

Refer to Chapter 3: *Installation Requirements* in the *Appeon Installation Guide for EAServer* for details on system requirements. The following highlights the key system requirements for Appeon 6.0:

- Install Appeon Developer to Sybase PowerBuilder® 9.0.3 Build 8614, PowerBuilder 10.5.2 Build 15347, or PowerBuilder 11.1 Build 8123 for Microsoft Windows 2000 SP4 (Professional and Server), Windows XP SP2 (Professional) and Windows 2003 Server SP1 (Server and Enterprise), Windows Vista, or Windows 2008.
- Install Appeon Server to Sybase EAServer 6.1.0.14 for Microsoft Windows 2000 SP4 (Professional and Server), Windows XP SP2 (Professional), Windows 2003 Server (Server and Enterprise), Windows Vista, Unix OS (such as IBM AIX and Sun Solaris), or Linux (such as RedHat Linux) that is supported by Sybase EAServer.
- Install Appeon Server Web Component to Apache 1.3 or 2.0, or Microsoft IIS 5.0 or 6.0

3.2.2 System requirements for .NET*

Refer to Chapter 3: *Installation Requirements* in the *Appeon Installation Guide for .NET* for details on system requirements. The following highlights the key system requirements for Appeon 6.0:

- Install Appeon Developer to Sybase PowerBuilder® 9.0.3 Build 8614, PowerBuilder 10.5.2 Build 15347, or PowerBuilder 11.1 Build 8123 for Microsoft Windows 2000 SP4 (Professional and Server), Windows XP SP2 (Professional) and Windows 2003 Server SP1 (Server and Enterprise), Windows Vista, or Windows 2008.
- Install Appeon Server to Microsoft IIS 6.0 or 7.0 with Microsoft .NET Framework 2.0 or 3.0 on Microsoft Windows 2003 Server SP2 (Enterprise and Standard Edition).

* Not available in Sybase Distribution. For differences of distributions, refer to the *Distributions* section in *Introduction to Appeon*.

3.2.3 System requirements for WebLogic

Refer to Chapter 3: Installation Requirements in the Apeon Installation Guide for Websphere for details on system requirements. The following highlights the key system requirements for Apeon 6.0:

- Install Apeon Developer to Sybase PowerBuilder® 9.0.3 Build 8614, PowerBuilder 10.2.1 Build 9537, PowerBuilder 10.5.2 Build 15347, or PowerBuilder 11.1 Build 8123 for
- Microsoft Windows 2000 SP4 (Professional and Server), Windows XP SP2 (Professional) and Windows 2003 Server SP1 (Server and Enterprise), Windows Vista, or Windows 2008.
- Install Apeon Server to BEA® WebLogic Server 8.1.6 or 9.2 for Microsoft Windows 2000 SP4 (Professional and Server), Windows XP SP2 (Professional), Windows 2003 Server (Server and Enterprise), Windows Vista, Unix OS (such as IBM AIX and Sun Solaris), or Linux (such as RedHat Linux) that is supported by WebLogic.
- Install Apeon Server Web Component to Apache 1.3 or 2.0, or Microsoft IIS 5.0 and 6.0.

3.2.4 System requirements for Websphere

Refer to Chapter 3: Installation Requirements in the Apeon Installation Guide for Websphere for details on system requirements. The following highlights the key system requirements for Apeon 6.0:

- Install Apeon Developer to Sybase PowerBuilder® 9.0.3 Build 8614, PowerBuilder 10.2.1 Build 9537, PowerBuilder 10.5.2 Build 15347, or PowerBuilder 11.1 Build 8123 for
- Microsoft Windows 2000 SP4 (Professional and Server), Windows XP SP2 (Professional) and Windows 2003 Server SP1 (Server and Enterprise), Windows Vista, or Windows 2008.
- Install Apeon Server to IBM® WebSphere Server 5.1 or 6.0 for Microsoft Windows 2000 SP4 (Professional and Server), Windows XP SP2 (Professional), Windows 2003 Server (Server and Enterprise), Windows Vista, Unix OS (such as IBM AIX and Sun Solaris), or Linux (such as RedHat Linux) that is supported by Websphere.
- Install Apeon Server Web Component to Apache 1.3 or 2.0, or Microsoft IIS 5.0 and 6.0.

4 New Appeon Developer Features

4.1 Pure-JavaScript deployment removed

Pure-JavaScript deployment is end of life by the time Appeon 6.0 is released, therefore, settings related with Pure-JavaScript deployment have been removed, such as:

- Add Component button is removed from Application Profiles configuration tab
- Deployment Option buttons are removed from Application Profiles | Basic Settings tab.
- Performance settings for Pure-JavaScript are removed from the Performance Booster dialog.

4.2 Trace Configure and Debug Configure removed

The Trace Configure and the Debug Configure buttons are removed from the Appeon Developer toolbar, which means, you will no longer be able to generate runtime reports (mainly, Web Debug Report and the Web Performance Runtime Tracing Report).

4.3 Supports deployment to EAServer or .NET IIS* using one Appeon Developer

Deployment process for EAServer and deployment process for .NET are integrated into each other, so that you can deploy an application to a J2EE server (EAServer) or .NET server (IIS) with one application profile in Appeon Developer.

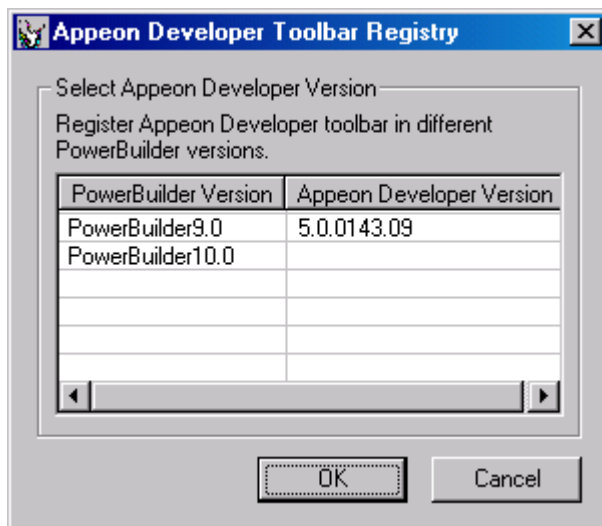
4.4 New Connection Cache profile (EAServer only)

Connection Cache Profile allows you to directly create, modify and delete EAServer connection caches using Appeon Developer, thus removing the necessity of going back and forth between AEM, EAServer Manager and Appeon Developer.

4.5 Appeon Developer Toolbar Register Tool

Appeon Developer can run with PowerBuilder 9, 10, 10.5 and 11 at the same time and multiple Appeon Developer versions can run on the same machine. The Appeon Developer Toolbar register tool enables you to register (or unregister) one Appeon Developer version to more than one PowerBuilder version or different Appeon Developer versions to different PowerBuilder versions, so that you can easily and flexibly select which Appeon Developer version and PowerBuilder version to use.

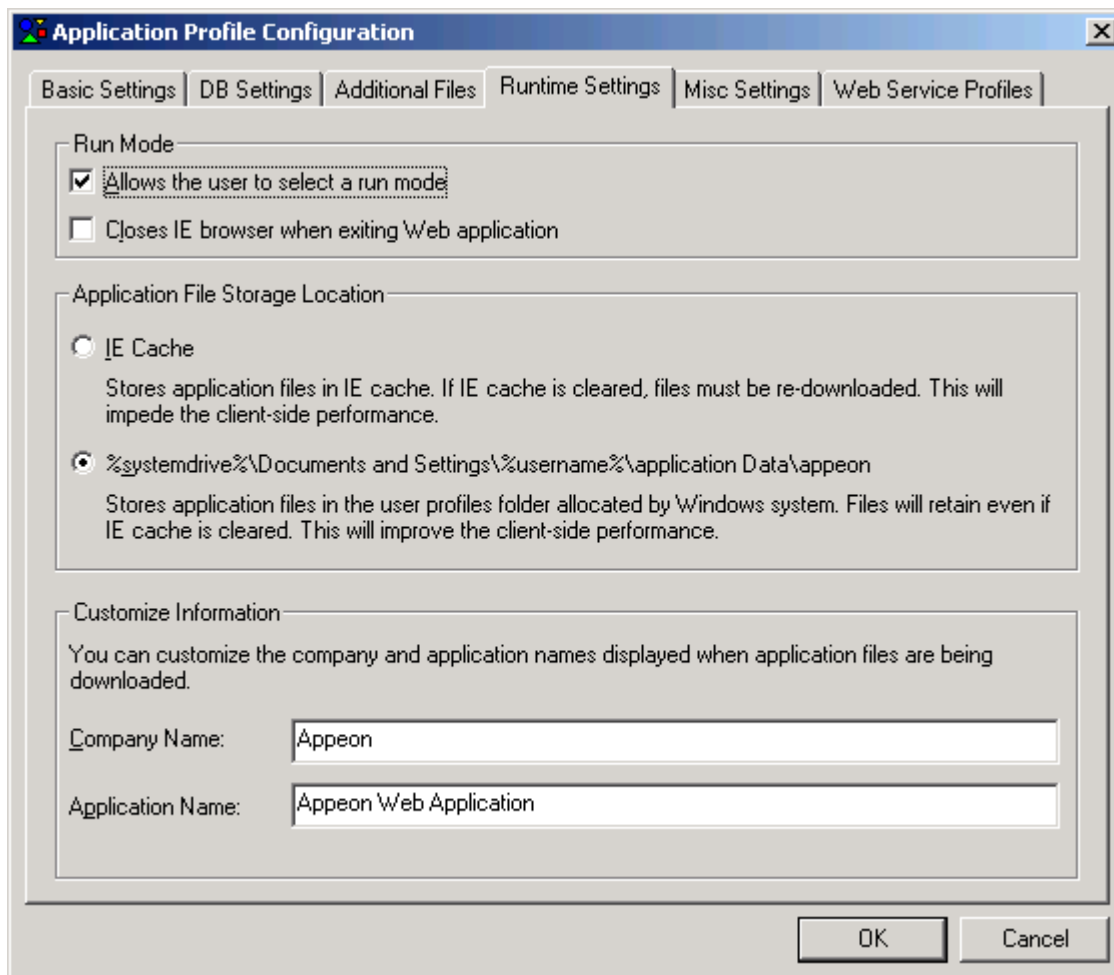
* Not available in Sybase Distribution. For differences of distributions, refer to the *Distributions* section in *Introduction to Appeon*.

Figure 4-1: Connection cache profiles

4.6 New Runtime settings

A new runtime setting is added:

Closes IE browser when existing Web application – When you close the Web application, the Internet Explorer window does not close, leaving a blank page in it. With this option enabled, the Internet Explorer window can be automatically closed when the application is closed.

Figure 4-2: Connection cache profiles

4.7 New setting for ASE database profile

A Release dropdown listbox is added to the Database Type Profile Configuration window for you to select the version of ASE database.

Figure 4-3: Connection cache profiles

Database Type Profile Configuration

For each database type used in your application(s), you must provide an ODBC or Native Interface connection to a database of that type in order for Appeon Developer to connect to the data source during deployment.

You need only provide one connection to each type of database used in your application.

Database Settings

Database Type: Sybase ASE 12.x/15.x

Database Interface: ODBC Interface Native Interface

Syntax: Enclose table and column names in Quotes

ODBC Interface

Data Source:

User ID:

Password:

Native Interface

Server:

User ID:

Password:

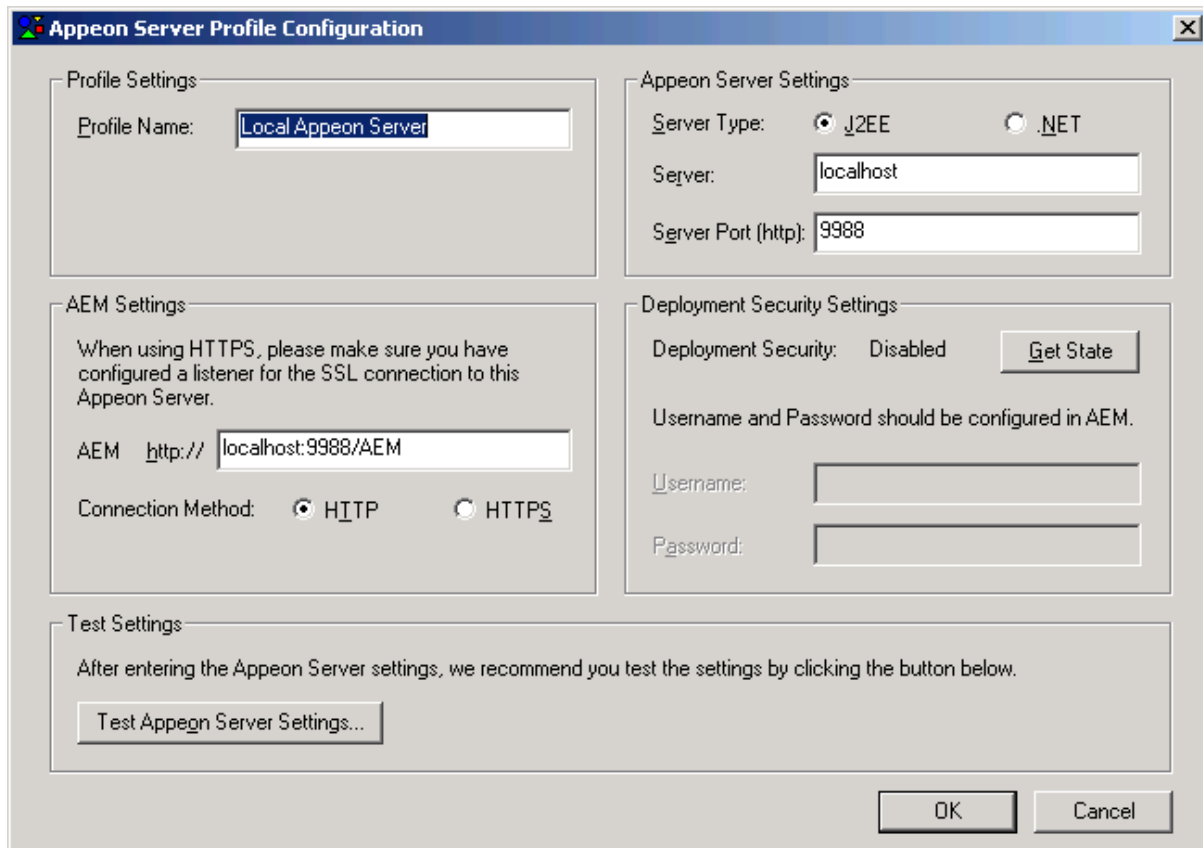
Database:

Release:

4.8 New Setting for Appeon Server profile

A Server Type setting is added to Appeon Server Profile Configuration window for you to select the type of Appeon Server. Select J2EE if Appeon Server is installed to Sybase EAServer; select .NET* if Appeon Server is installed to Microsoft .NET Framework.

* Not available in Sybase Distribution. For differences of distributions, refer to the *Distributions* section in *Introduction to Appeon*.

Figure 4-4: Connection cache profiles

4.9 Deployment Profile new feature

If the server type of Appeon Server profile is .NET*, then the server type of Web Server profile must be Microsoft IIS.

If the server type of Appeon Server profile is J2EE, then the server type of Web Server profile can be Apache 1.3/2.0, EAServer, Microsoft IIS, WebLogic, and WebSphere.

4.10 Enhanced deployment log

For Deploy Log, you can view errors only to quickly identify any problem. You can click View All to view all information such as errors, warnings, and process description, or click View Warning to view warnings only, or click View Errors to view errors only.

* Not available in Sybase Distribution. For differences of distributions, refer to the *Distributions* section in *Introduction to Appeon*.

5 New Appeon Enterprise Manager Features

5.1 New Decimal Precision tool

You can select a proper decimal precision for the Web application.

- 15-digit Decimal supports numbers with up to 15 digits and offers high performance. It is available for all PowerBuilder developed applications.
- 28-digit Decimal supports numbers with up to 28 digits but offers lower performance than 15-digit Decimal. 28-digit Decimal is only available for applications developed with PowerBuilder 10.5 or above. It is not recommended to apply 28-digit decimal unless high precision number is necessary.

Figure 5-1: Help button

[AEM Console](#) > [Application Properties](#) > [Decimal Precision](#)

Decimal Precision Settings	
Select a proper decimal precision for the Web application. 15-digit Decimal supports numbers with up to 15 digits and offers high performance. It is available for all PowerBuilder developed applications. 28-digit Decimal supports numbers with up to 28 digits but offers lower performance than 15-digit Decimal. 28-digit Decimal is only available for applications developed with PowerBuilder 10.5 or above. It is not recommended to apply 28-digit decimal unless high precision number is necessary.	
Application Name	Decimal Precision
appeon acf demo	15-digit Decimal
appeon code examples	15-digit Decimal
sales application demo	15-digit Decimal

5.2 Application Properties | Display tool removed

The Display tool under Application Properties is removed, as it's related with Pure-JavaScript deployment.

5.3 Appeon Server Status Monitor not available for EAServer 6.x or .NET*

Appeon Server Status Monitor works with EAServer 5.x, but does not work with EAServer 6.x or .NET.

5.4 Connection Cache tool not available for EAServer 6.x

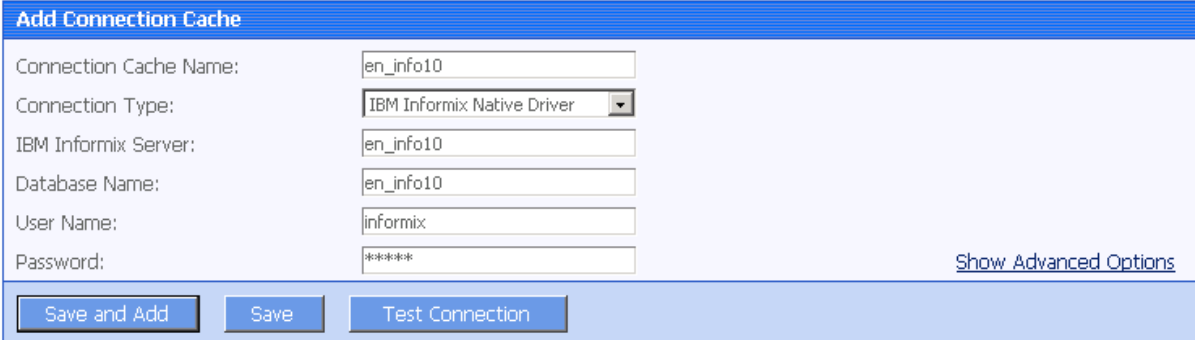
This Connection Cache tool becomes invisible if Appeon Server is installed to EAServer 6.x. And you would need to configure the connection cache (or data source) in EAServer Management Console. For details, please see "Configuring Data Source" section in EAServer System Administration Guide.

* Not available in Sybase Distribution. For differences of distributions, refer to the *Distributions* section in *Introduction to Appeon*.

5.5 Connection Cache tool supports Informix (for .NET*)

You can configure connection cache for Informix database in the AEM | Connection Cache tool.

Figure 5-2: Help button



The screenshot shows the 'Add Connection Cache' dialog box. It features a blue title bar and a light blue background. The fields are as follows:

Field Label	Value
Connection Cache Name:	en_info10
Connection Type:	IBM Informix Native Driver
IBM Informix Server:	en_info10
Database Name:	en_info10
User Name:	informix
Password:	*****

At the bottom right, there is a link labeled 'Show Advanced Options'. At the bottom, there are three buttons: 'Save and Add', 'Save', and 'Test Connection'.

5.6 Enhanced LDAP tool

You can configure LDAP tool in the following way to display a custom login window before loading the application.

Set the user authentication to Security Off in the Application Security group box; keep the System Security setting as On and set the Security Type setting to LDAP Security in the System Settings tool; write codes in the PowerBuilder program to call "appeonldaplogin" function to display a custom login window for LDAP security login. For details, please refer to "appeonldaplogin" function description in Appeon Workarounds Guide.

* Not available in Sybase Distribution. For differences of distributions, refer to the *Distributions* section in *Introduction to Appeon*.

6 Other New Features

6.1 New Features in Appeon Workarounds PBL

Appeon 6.0 provides more client functions in Appeon workarounds PBL

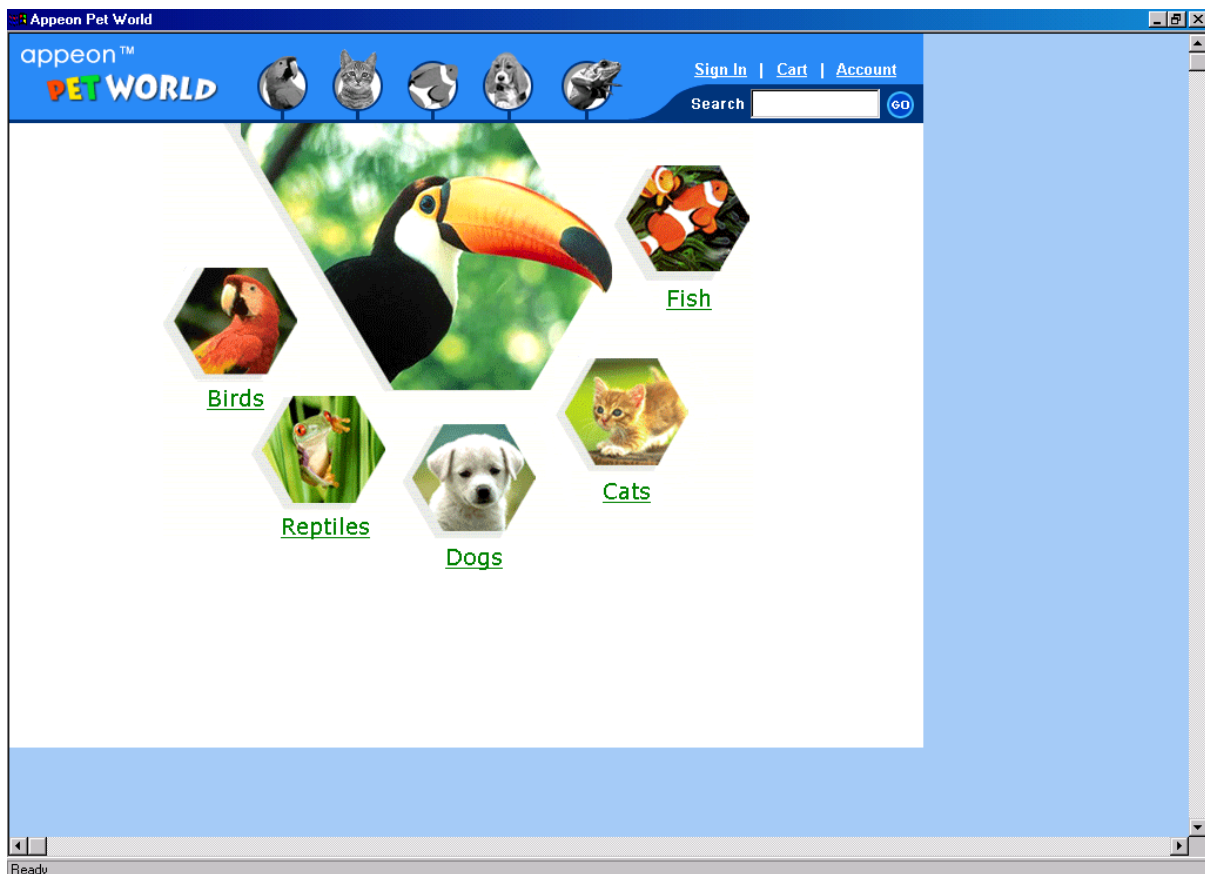
- AppeonGetCacheDir function
- AppeonGetIEHandle function
- AppeonGetIEUrl function
- AppeonGetServerType function
- AppeonLDAPLogon function

6.2 New Demo feature

For detailed description of these new features, refer to the Appeon Demo tutorial.

Pet world is added into Appeon Demo.

Figure 6-1: Help button



Index

A

About This Book, 1
Appeon Developer Toolbar Register Tool,
6
Appeon Server Status Monitor not
available for EAServer 6.x or .NET, 11
Application Properties | Display tool
removed, 11
audience, 1

C

Connection Cache profile, 6
Connection Cache tool not available for
EAServer 6.x, 11
Connection Cache tool supports Informix
(for .NET), 12

D

Database features support, 3
Database support, 3
DataWindow features, 3
Debug Configure removed, 6
Deployment Profile new feature, 10

E

Enhanced LDAP tool, 12

H

how to use this book, 1

I

if you need help, 2

M

multiple Appeon Server installation types,
4

N

new Appeon Developer feature
 Connection Cache profile, 6
New Decimal Precision tool, 11
New Runtime settings, 7
New Setting for Appeon Server profile, 9
New setting for ASE database profile, 8

P

PowerBuilder 11 support, 3
Pure-JavaScript deployment removed, 6

R

readers, 1
related documents, 1

S

system controls, 3
system requirements, 4
system requirements for . WebLogic, 5
system requirements for . Websphere, 5
system requirements for .NET, 4
system requirements for EAServer, 4

T

Trace Configure and Debug Configure
removed, 6
Trace Configure removed, 6